

**CITY OF BURNABY**

**BYLAW NO. 14519**

A BYLAW to close  
a certain portion of highway

WHEREAS pursuant to section 40 of the *Community Charter* the Council may by bylaw close part of a highway to traffic;

AND WHEREAS the Council, before adopting this Bylaw, has caused the required statutory public notice of its intention to be given by advertisement;

AND WHEREAS the Council deems it expedient and in the public interest to stop up and close to traffic that portion of highway more particularly hereinafter described;

NOW THEREFORE the Council of the City of Burnaby ENACTS as follows:

1. This Bylaw may be cited as **BURNABY HIGHWAY CLOSURE BYLAW NO. 5, 2022.**
  
2. ALL AND SINGULAR that certain parcel or tract of land, situate, lying and being in the City of Burnaby, in the Province of British Columbia, more particularly known and described as all those portions of road in District Lot 78, Group 1, New Westminster District, dedicated by Plan 3049, containing 0.202ha and District Lot 77, Group 1, New Westminster District, dedicated by Plan 3051, containing 0.231 ha (hereinafter called “the closed portions of road”) shown outlined on the Sketch Plan to accompany City of Burnaby Bylaw Number 14519, prepared by City of Burnaby, Engineering Department, a copy of which is hereunto annexed is hereby closed to all types of traffic.

Read a first time this 3<sup>rd</sup> day of October, 2022

Read a second time this 3<sup>rd</sup> day of October, 2022

Read a third time this 3<sup>rd</sup> day of October, 2022

Reconsidered and adopted this 24<sup>th</sup> day of October, 2022

A handwritten signature in blue ink that reads "M Honey".

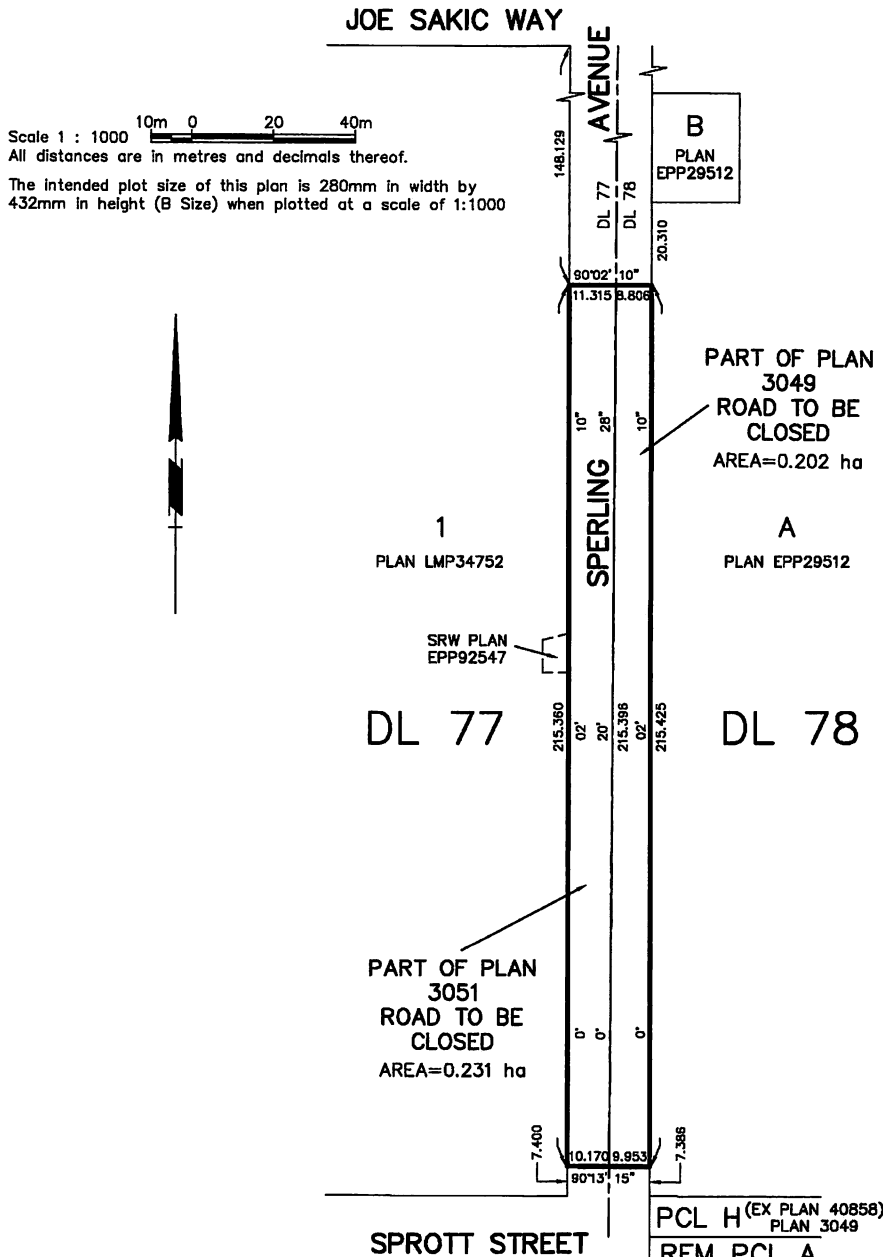
MAYOR

A handwritten signature in blue ink that reads "Beverly" followed by a stylized flourish.

CLERK

**SKETCH PLAN TO ACCOMPANY CITY OF BURNABY  
BYLAW NUMBER 14519 TO CLOSE PART OF A ROAD  
DEDICATED ON PLAN 3049 OF DISTRICT LOT 78 AND  
PART OF ROAD DEDICATED ON PLAN 3051 OF  
DISTRICT LOT 77; ALL OF GROUP 1,  
NEW WESTMINSTER DISTRICT**

PURSUANT TO SECTION 40 OF THE COMMUNITY CHARTER



The City of Burnaby  
Engineering Dept. Survey Section  
4949 Canada Way, Burnaby, B.C.  
V5G 1M2  
Phone : (604) 294-7463  
Fax : (604) 294-7425