

CITY OF BURNABY

BYLAW NO. 14484

A BYLAW to close and remove the dedication of
a certain portion of highway

WHEREAS pursuant to section 40 of the *Community Charter* and section 120 of the *Land Title Act*, Council may by bylaw close part of a highway to traffic and remove the dedication of that part of the highway;

AND WHEREAS Council, before adopting this Bylaw, has caused the required statutory public notice of its intention to be given by advertisement;

AND WHEREAS Council deems it expedient and in the public interest to stop up and close to traffic and remove the dedication of that portion of highway more particularly hereinafter described,

NOW THEREFORE the Council of the City of Burnaby ENACTS as follows:

1. This Bylaw may be cited as **BURNABY HIGHWAY CLOSURE BYLAW NO. 4, 2022.**
2. ALL AND SINGULAR those certain parcels or tracts of land, situate, lying and being in the City of Burnaby, in the Province of British Columbia, more particularly known and described as that portion of lane dedicated in District Lot 95, Group 1, New Westminster District by Plan 1981 containing 245.2m² as shown outlined in bold on Reference Plan EPP98104 (hereinafter called “the closed portion of lane”), prepared by Peter Mural, B.C.L.S., a copy of which is hereunto annexed, is hereby closed to all types of traffic.

3. The dedication of the closed portion of lane as highway is removed.

Read a first time this 29th day of August, 2022

Read a second time this 29th day of August, 2022

Read a third time this 29th day of August, 2022

Reconsidered and adopted this 3rd day of October, 2022

MAYOR

CLERK

REFERENCE PLAN TO ACCOMPANY THE CITY OF BURNABY ROAD CLOSURE
 BYLAW NO. 14484 OF PART OF THE LANE (KNOWN AS 19TH AVENUE) DEDICATED BY PLAN 1981,
 BLOCK 47, DISTRICT LOT 95, GROUP 1, NEW WESTMINSTER DISTRICT
 PURSUANT TO SECTION 120 OF THE LAND TITLE ACT AND SECTION 40 OF THE COMMUNITY CHARTER
 BCGS 92G.026

PLAN EPP98104

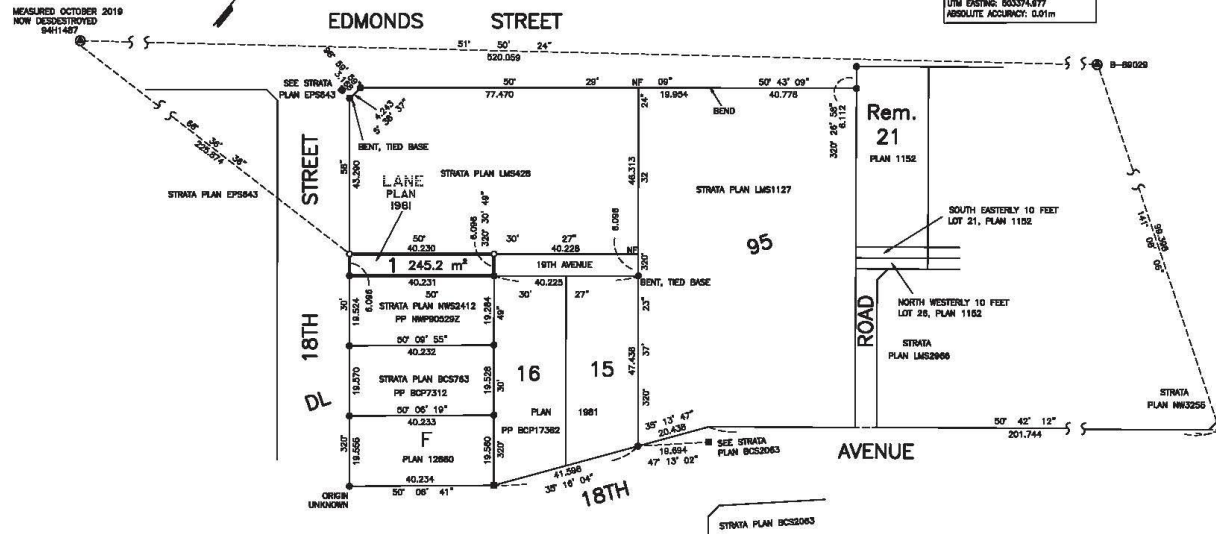
10m 0 1:750 40m

THE INTENDED PLOT SIZE OF THIS PLAN IS
 360mm IN WIDTH AND 432mm IN HEIGHT (C SIZE)
 WHEN PLOTTED AT A SCALE 1:750

9411467
 DATUM: MAD83 (CSRS)4.0.D.BC.1.MRD
 UTM ZONE: 10
 UTM NORTHING: 5451248.471
 UTM EASTING: 603374.677
 ABSOLUTE ACCURACY: 0.01m

B-88029
 DATUM: MAD83 (CSRS)4.0.D.BC.1.MRD
 UTM ZONE: 10
 UTM NORTHING: 5451588.850
 UTM EASTING: 603374.677
 ABSOLUTE ACCURACY: 0.01m

MEASURED OCTOBER 2019
 NOW DESTROYED
 9411467



LEGEND :
 THIS PLAN LIES WITHIN INTEGRATED SURVEY AREA NO. 25,
 DISTRICT OF BURNABY, MAD83 (CSRS) 4.0.D.BC.1.GVRD
 GRID BEARINGS ARE DERIVED FROM OBSERVATIONS BETWEEN GEODETIC CONTROL MONUMENTS
 9411467 AND B-88029, AND ARE REFERRED TO THE CENTRAL MERIDIAN OF UTM ZONE 10.
 THE UTM COORDINATES AND ESTIMATED ABSOLUTE ACCURACY ACHIEVED
 ARE DERIVED FROM THE LATEST PUBLISHED COORDINATES AND
 STANDARD DEVIATIONS FOR GEODETIC CONTROL MONUMENTS 9411467 AND B-88029.
 THIS PLAN SHOWS HORIZONTAL, GROUND LEVEL DISTANCES, UNLESS OTHERWISE SPECIFIED.
 TO COMPUTE GRID DISTANCES, MULTIPLY GROUND LEVEL DISTANCES BY THE AVERAGE
 CORRECTION FACTOR OF 0.9999733. THE AVERAGE CORRECTION FACTOR HAS BEEN DETERMINED
 BASED ON CONTROL MONUMENTS 9411467 AND B-88029.
 ALL DISTANCES ARE IN METRES AND DECIMALS THEREOF.
 FOUND PLACED DESCRIPTION

UNDERHILL & UNDERHILL
 PROFESSIONAL LAND SURVEYORS
 301, 8337 WESTLAKE DRIVE
 BURNABY, B.C. V5A 4R2
 TEL. (604) 732-3364

● CONTROL MONUMENT
 ■ LEAD PLUG
 ○ STANDARD IRON POST
 PP DENOTES POSTING PLAN

THIS PLAN LIES WITHIN THE METRO VANCOUVER REGIONAL DISTRICT
 THE FIELD SURVEY REPRESENTED BY THIS PLAN WAS
 COMPLETED ON THE 4TH DAY OF AUGUST, 2022
 PETER MURALT, BCLS 691

SCHEDULE "A"