

CITY OF BURNABY

BYLAW NO. 14476

A BYLAW to dedicate certain lands within the City for public parks at Cariboo and Brunette River Conservation Lands, Stoney Creek Park and Trail System, Deer Lake Park, and Burnaby Lake Park System

WHEREAS section 30 of the *Community Charter* empowers Council, by an affirmative vote of at least 2/3 of all the members of Council, to dedicate for a public purpose real property owned by the City;

NOW THEREFORE the Council of the City of Burnaby ENACTS as follows:

1. This Bylaw may be cited as **BURNABY PARK DEDICATION BYLAW 2022**.
2. There is hereby dedicated for park and recreation uses of the public that real property owned by the City and more particularly described in Schedules A to D inclusive.

Read a first time this 25th day of July, 2022

Read a second time this 25th day of July, 2022

Read a third time this 25th day of July, 2022

Reconsidered and adopted this 7th day of November, 2022

MAYOR

CLERK

SCHEDULE A
CARIBOO AND BRUNETTE RIVER
CONSERVATION LANDS

<u>PARCEL IDENTIFIER:</u>	<u>LEGAL DESCRIPTION:</u>
002-867-281	Lot 11 Block 1 District Lot 14 Group 1 New Westminster District Plan 3047 Except: Part Shown on Highway Plan 26009 and Plan EPP7192
016-175-778	Lot 1 District Lots 13 and 14 Group 1 New Westminster District Plan 85914
003-176-011	Lot 13 Block 1 District Lot 14 Group 1 New Westminster District Plan 3047 Except: Part on SRW Plan 26009; Plan EPP7191;
010-815-457	Lot "A" Except: Firstly: Parcel "F" (Reference Plan 3288), Secondly: Parcel "D" (Explanatory Plan 4880) and Thirdly: Parcel "E" (Explanatory Plan 5958); Block 12 District Lot 1 Group 1 New Westminster District Plan 3043
010-840-087	Parcel "F" (Reference Plan 3288) Lot "A" Block 12 District Lot 1 Group 1 New Westminster District Plan 3043
010-839-976	Parcel "B" (291266E) Lot 9 Block 11 District Lot 1 Group 1 New Westminster District Plan 3043
010-839-143	Lot 21 Block 12 District Lot 1 Group 1 New Westminster District Plan 3043
010-839-160	Lot 22 Block 12 District Lot 1 Group 1 New Westminster District Plan 3043
010-839-186	Lot 23 Block 12 District Lot 1 Group 1 New Westminster District Plan 3043
010-839-291	Parcel "E" (Reference Plan 5958) Lot "A" Block 12 District Lot 1 Group 1 New Westminster District Plan 3043
023-052-147	Lot 5 District Lot 1 New Westminster District Plan LMP22608

- 010-757-970 Parcel 1 Except: Firstly: Part Subdivided by Plan 81254 and Secondly: Part Subdivided by Plan 81284, District Lot 13 Group 2 New Westminster District Plan 77444
- 017-808-405 Lot 2 District Lot 14 Group 1 New Westminster District Plan LMP4236
- 000-647-900 Lot 1 District Lot 14 Group 1 New Westminster District Plan 68061
- 010-864-466 All that portion District Lot 13 Group 1 Shown marked “Vancouver, Fraser Valley and Southern Railway” Plan 3046 Lying South and West of Cariboo Road New Westminster District
- 023-364-858 Lot 2 District Lot 13 Group 1 New Westminster District Plan LMP26747
- 018-578-381 8.209 ha portion of Lot 2 Block 23 District Lot 13 Group 1 New Westminster District Plan LMP13808 shown outlined on sketch prepared by Gary Holme, B.C.L.S., dated June 1st, 2022, attached hereto marked Exhibit #1

All those portions of the following lands not already dedicated as park:

- 003-141-365 Block 19 Except Part in Plan LMP13808, District Lot 13 Group 1 New Westminster District Plan 3046
- 003-142-141 Lot 1 Except: Firstly; Part on Reference Plan 5667 Secondly; Part Subdivided by Plan LMP26288 Block 7 District Lot 1 Group 1 New Westminster District Plan 3043
- 010-839-755 Parcel A (Reference Plan 3070) Except: Part Subdivided by Plan LMP26288 Block 10 District Lot 1 Group 1 New Westminster District Plan 3043
- 010-887-491 Lot 2 Except: Part Highway on Statutory Right Of Way Plan 25870; District Lot 12 Group 1 New Westminster District Plan 3046
- 010-826-971 Parcel “A” (Reference Plan 4396) Block 21 District Lot 1 Group 1 New Westminster District Plan 3043

SCHEDULE B

STONEY CREEK PARK AND TRAIL SYSTEM

PARCEL IDENTIFIER:

LEGAL DESCRIPTION:

006-609-694

Lot 68 Except: Part Subdivided by Plan 40316; District Lots 6, 8 and 56 Group 1 New Westminster District Plan 31569

008-544-573

Lot 96 District Lots 4 and 6 Group 1 New Westminster District Plan 38739

002-125-943

Lot 22 District Lot 15 Group 1 New Westminster District Plan 70115

003-296-091

Lot 166 Except: Part Within Heavy Outline Taken by Highway Statutory Right of Way Plan 62130, District Lot 15 Group 1 New Westminster District Plan 57602

SCHEDULE C

DEER LAKE PARK

PARCEL IDENTIFIER:

LEGAL DESCRIPTION:

000-788-171	Lot 3 District Lot 85 Group 1 New Westminster District Plan 8861
012-193-526	Lot 1 Block 2 District Lot 93 Group 1 New Westminster District Plan 1462
012-193-607	Lot 30 Block 2 District Lot 93 Group 1 New Westminster District Plan 1462
012-193-577	Lot 29 Block 2 District Lot 93 Group 1 New Westminster District Plan 1492
012-193-968	Lot 28 Block 2 District Lot 93 Group 1 New Westminster District Plan 1462
012-193-551	Lot 27 Block 2 District Lot 93 Group 1 New Westminster District Plan 1462
012-193-909	Lot 26 Block 2 District Lot 93 Group 1 New Westminster District Plan 1462
012-193 895	Lot 25 Block 2 District Lot 93 Group 1 New Westminster District Plan 1462
012-193-861	Lot 24 Block 2 District Lot 93 Group 1 New Westminster District Plan 1462
012-193-950	Lot 23 Block 2 District Lot 93 Group 1 New Westminster District Plan 1462
012-193-801	Lot 22 Block 2 District Lot 93 Group 1 New Westminster District Plan 1462
012-193-844	Lot 21 Block 2 District Lot 93 Group 1 New Westminster District Plan 1462

- 012-193-739 Lot 20 Block 2 District Lot 93 Group 1 New Westminster District Plan 1462
- 023-994-240 Lot 23 District Lot 83 Group 1 New Westminster District Plan LMP36237
- 002-626-390 The South Half of Lot 37 District Lot 83 Group 1 New Westminster District Plan 1267

All those portions of the following lands not already dedicated as park:

- 012-066-265 0.156 ha portion of North Half Lot 37 District Lot 83 Group 1 New Westminster District Plan 1267 shown outlined on sketch prepared by Gary Holme, B.C.L.S., dated July 8th, 2022, attached hereto marked Exhibit #2
- 012-066-290 0.196 ha portion of North Half Lot 38 District Lot 83 Group 1 New Westminster District Plan 1267 shown outlined on sketch prepared by Gary Holme, B.C.L.S., dated July 8th, 2022, attached hereto marked Exhibit #2
- 012-066-516 0.696 ha portion of Lot 41 District Lot 83 Group 1 New Westminster District Plan 1267 shown outlined on sketch prepared by Gary Holme, B.C.L.S., dated July 8th, 2022, attached hereto marked Exhibit #2
- 012-066-591 0.716 ha portion of Lot 42 District Lot 83 Group 1 New Westminster District Plan 1267 shown outlined on sketch prepared by Gary Holme, B.C.L.S., dated July 8th, 2022, attached hereto marked Exhibit #2
- 012-066-656 0.737 ha portion of Lot 43 District Lot 83 Group 1 New Westminster District Plan 1267 shown outlined on sketch prepared by Gary Holme, B.C.L.S., dated July 8th, 2022, attached hereto marked Exhibit #2
- 012-066-681 0.731 ha portion of Lot 44 District Lot 83 Group 1 New Westminster District Plan 1267 shown outlined on sketch prepared by Gary Holme, B.C.L.S., dated July 8th, 2022, attached hereto marked Exhibit #2

- 012-066-699 0.723 ha portion of Lot 45 District Lot 83 Group 1 New Westminster District Plan 1267 shown outlined on sketch prepared by Gary Holme, B.C.L.S., dated July 8th, 2022, attached hereto marked Exhibit #2
- 011-122-307 1.45 ha portion of Lot "A" Except: Firstly: North 555.5 Feet Except West 169 Feet and Secondly: West 169 Feet of North 555.5 Feet; District Lot 83, Group 1, New Westminster District Plan 4678 shown outlined on sketch prepared by Gary Holme, B.C.L.S., dated July 8th, 2022, attached hereto marked Exhibit #2
- 012-066-729 0.736 ha portion of Lot 48 District Lot 83 Group 1 New Westminster District Plan 1267 shown outlined on sketch prepared by Gary Holme, B.C.L.S., dated July 8th, 2022, attached hereto marked Exhibit #2
- 026-942-950 0.746 ha portion of Lot 49 District Lot 83 Group 1 New Westminster District Plan 1267 shown outlined on sketch prepared by Gary Holme, B.C.L.S., dated July 8th, 2022, attached hereto marked Exhibit #2
- 012-066-737 0.749 ha portion of Lot 50 District Lot 83 Group 1 New Westminster District Plan 1267 shown outlined on sketch prepared by Gary Holme, B.C.L.S., dated July 8th, 2022, attached hereto marked Exhibit #2
- 012-066-621 0.724 ha portion of Lot 51 District Lot 83 Group 1 New Westminster District Plan 1267 shown outlined on sketch prepared by Gary Holme, B.C.L.S., dated July 8th, 2022, attached hereto marked Exhibit #2
- 012-066-648 0.714 ha portion of Lot 52 District Lot 83 Group 1 New Westminster District Plan 1267 shown outlined on sketch prepared by Gary Holme, B.C.L.S., dated July 8th, 2022, attached hereto marked Exhibit #2
- 012-066-745 0.792 ha portion of Lot 53 District Lot 83 Group 1 New Westminster District Plan 1267 shown outlined on sketch prepared by Gary Holme, B.C.L.S., dated July 8th, 2022, attached hereto marked Exhibit #2

023-994-258

0.113 ha portion of Lot 24 District Lot 83 Group 1 New
Westminster District Plan LMP36237 shown outlined on sketch
prepared by Gary Holme, B.C.L.S., dated July 8th, 2022, attached
hereto marked Exhibit #2

SCHEDULE D

BURNABY LAKE PARK SYSTEM

<u>PARCEL IDENTIFIER:</u>	<u>LEGAL DESCRIPTION:</u>
011-077-662	Lot 4 Block "F" District Lot 75 Group 1 New Westminster District Plan 4147
011-077-646	Lot 3 Block "F" District Lot 75 Group 1 New Westminster District Plan 4147
011-077-638	Lot 2 Block "F" District Lot 75 Group 1 New Westminster District Plan 4147
011-077-476	Lot 1 Except: Part Subdivided by Plan 55484; Block "F" District Lot 75 Group 1 New Westminster District Plan 4147
025-550-641	Lot 3 District Lot 77 Group 1 New Westminster District Plan BCP281
003-146-332	Lot 83 Block 3 District Lot 77 Group 1 New Westminster District Plan 3051
003-146-316	Lot 82 Block 3 District Lot 77 Group 1 New Westminster District Plan 3051
003-146-278	Lot 81 Block 3 District Lot 77 Group 1 New Westminster District Plan 3051
003-086-569	Lot 80 Block 3 District Lot 77 Group 1 New Westminster District Plan 3051
003-086-526	Lot 79 Block 3 District Lot 77 Group 1 New Westminster District Plan 3051
024-730-483	Lot 41 Block 3 District Lot 77 Group 1 New Westminster District Plan 3051
027-507-173	Lot 40 Block 3 District Lot 77 Group 1 New Westminster District Plan 3051
027-507-165	Lot 39 Block 3 District Lot 77 Group 1 New Westminster District Plan 3051

027-507-157	Lot 38 Block 3 District Lot 77 Group 1 New Westminster District Plan 3051
027-507-149	Lot 37 Block 3 District Lot 77 Group 1 New Westminster District Plan 3051
027-507-131	Lot 36 Block 3 District Lot 77 Group 1 New Westminster District Plan 3051
024-730-475	Lot 35 Block 3 District Lot 77 Group 1 New Westminster District Plan 3051
024-730-467	Lot 34 Block 3 District Lot 77 Group 1 New Westminster District Plan 3051
024-730-459	Lot 33 Block 3 District Lot 77 Group 1 New Westminster District Plan 3051
024-730-441	Lot 32 Block 3 District Lot 77 Group 1 New Westminster District Plan 3051
024-730-432	Lot 31 Block 3 District Lot 77 Group 1 New Westminster District Plan 3051
024-730-289	Lot 30 Block 3 District Lot 77 Group 1 New Westminster District Plan 3051
024-730-271	Lot 29 Block 3 District Lot 77 Group 1 New Westminster District Plan 3051
024-730-262	Lot 28 Block 3 District Lot 77 Group 1 New Westminster District Plan 3051
024-730-254	Lot 27 Block 3 District Lot 77 Group 1 New Westminster District Plan 3051
024-730-505	Lot 71 Block 3 District Lot 77 Group 1 New Westminster District Plan 3051
003-238-016	Lot 72 Block 3 District Lot 77 Group 1 New Westminster District Plan 3051
003-237-974	Lot 73 Block 3 District Lot 77 Group 1 New Westminster District Plan 3051

003-237-982	Lot 74 Block 3 District Lot 77 Group 1 New Westminster District Plan 3051
003-237-991	Lot 75 Block 3 District Lot 77 Group 1 New Westminster District Plan 3051
003-238-008	Lot 76 Block 3 District Lot 77 Group 1 New Westminster District Plan 3051
003-146-235	Lot 77 Block 3 District Lot 77 Group 1 New Westminster District Plan 3051
003-146-260	Lot 78 Block 3 District Lot 77 Group 1 New Westminster District Plan 3051
003-125-394	Lot 8 Block 3 District Lot 77 Group 1 New Westminster District Plan 3051
003-125-416	Lot 9 Block 3 District Lot 77 Group 1 New Westminster District Plan 3051
003-125-432	Lot 10 Block 3 District Lot 77 Group 1 New Westminster District Plan 3051
003-119-360	Lot 11 Block 3 District Lot 77 Group 1 New Westminster District Plan 3051
003-119-921	Lot 12 Block 3 District Lot 77 Group 1 New Westminster District Plan 3051
003-120-104	Lot 13 Block 3 District Lot 77 Group 1 New Westminster District Plan 3051
003-120-228	Lot 14 Block 3 District Lot 77 Group 1 New Westminster District Plan 3051
003-120-392	Lot 15 Block 3 District Lot 77 Group 1 New Westminster District Plan 3051
003-120-511	Lot 16 Block 3 District Lot 77 Group 1 New Westminster District Plan 3051
024-730-114	Lot 17 Block 3 District Lot 77 Group 1 New Westminster District Plan 3051

024-730-122	Lot 18 Block 3 District Lot 77 Group 1 New Westminster District Plan 3051
024-730-131	Lot 19 Block 3 District Lot 77 Group 1 New Westminster District Plan 3051
024-730-149	Lot 20 Block 3 District Lot 77 Group 1 New Westminster District Plan 3051
024-730-157	Lot 21 Block 3 District Lot 77 Group 1 New Westminster District Plan 3051
024-730-165	Lot 22 Block 3 District Lot 77 Group 1 New Westminster District Plan 3051
024-730-173	Lot 23 Block 3 District Lot 77 Group 1 New Westminster District Plan 3051
024-730-211	Lot 24 Block 3 District Lot 77 Group 1 New Westminster District Plan 3051
024-730-238	Lot 25 Block 3 District Lot 77 Group 1 New Westminster District Plan 3051
024-730-246	Lot 26 Block 3 District Lot 77 Group 1 New Westminster District Plan 3051
025-550-501	Lot 2 District Lot 77 Group 1 New Westminster District Plan BCP281
025-550-322	Lot 1 District Lots 75, 76 and 77 Group 1 New Westminster District Plan BCP281
004-494-016	Lot 6 Except: Part 1 Acre More or Less Shown Red on Plan 876 (Sperling Avenue), Block 15 District Lot 79 Group 1 New Westminster District Plan 536
004-494-075	Lot 6 Except: Firstly: Part 1 Acre More or Less Shown Red on Plan 876 (Sperling Avenue), Secondly: Part on SRW Plan 26541 Block 16 District Lot 79 Group 1 New Westminster District Plan 536
029-763-231	Lot A District Lot 78 Group 1 New Westminster District Plan EPP29512

- 003-183-718 Lot 6 Except Firstly: Part of Right of Way Plan 876 Secondly:
North 33 Feet Block 14 District Lot 79 Group 1 New Westminster
District Plan 536
- 024-722-898 Parcel A (Reference Plan 2299) Except: Part Subdivided by Plan
26329 of Lot 6 and 7 Block 14 District Lot 79 Group 1 New
Westminster District Plan 536
- 002-599-287 Parcel "H" (Explanatory Plan 40858) Blocks 17 to 20 District Lot
78 Group 1 New Westminster District Plan 3049
- 003-183-513 Lot 7 Except North 33 Feet Block 14 District Lot 79 Group 1 New
Westminster District Plan 536
- 004-494-024 Lot 7 Block 15 District Lot 79 Group 1 New Westminster District
Plan 536
- 004-494-369 Lot 7 Block 16 District Lot 79 Group 1 New Westminster District
Plan 536
- 003-174-841 All that Part Lot 5 of Lots 1 and 2 Block 4 District Lot 14 Group 1
New Westminster District Plan 3047 Shown on Plan 7845
- 011-945-800 Parcel "B" (Reference Plan 7292) Except: Part on Highway Plan
27805; Block 6 District Lot 87 Group 1 New Westminster District
Plan 966

Exhibit #1

PLAN OF PART OF LOT 2, BK 23, DL 13, GROUP 1, NWD, PLAN LMP13808;
 TO ACCOMPANY CITY OF BURNABY PARK DEDICATION BYLAW NO. 14476.

B.C.G.S. 926.026

Scale 1 : 1250

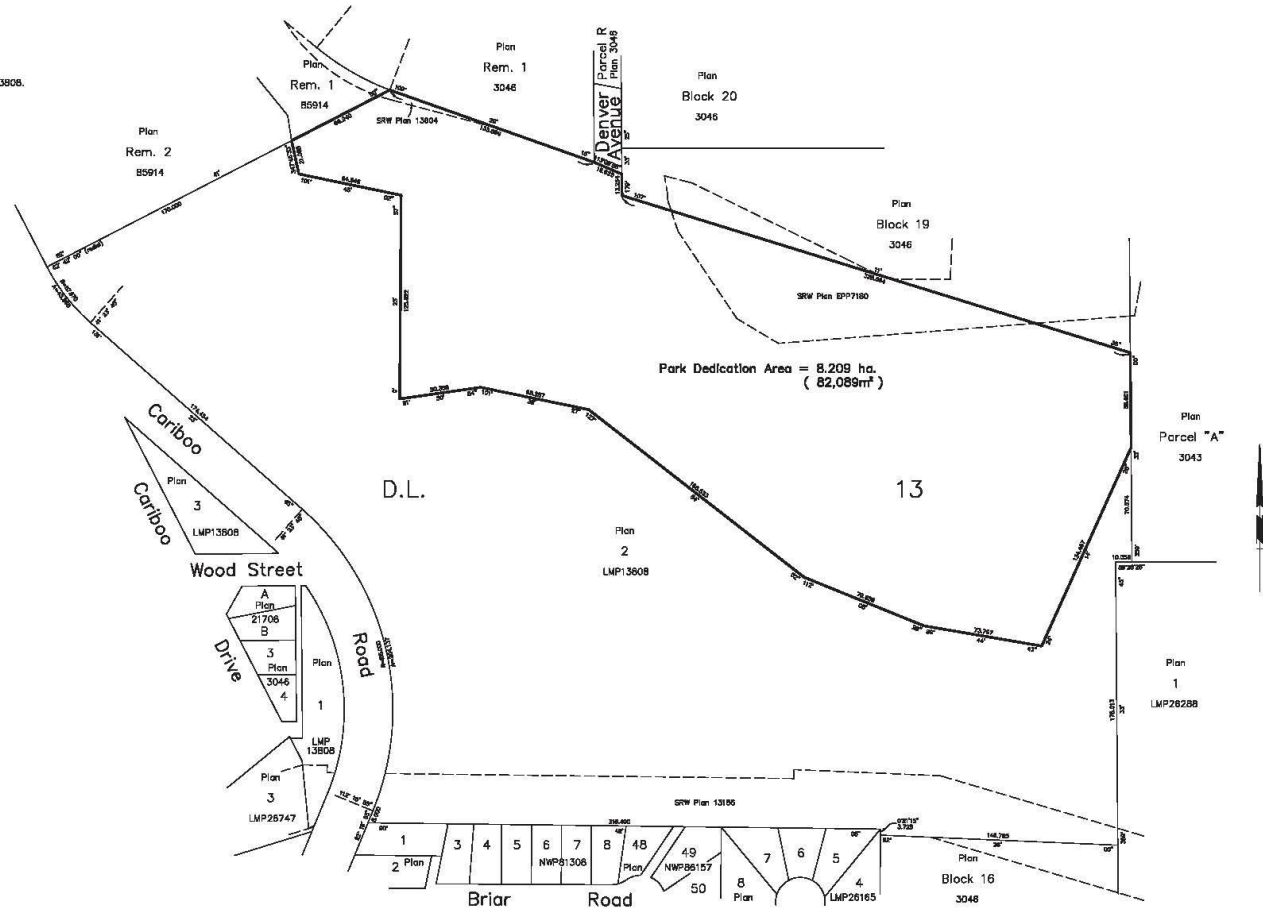
The intended plot size of this plan is 884mm in width by 560mm in height (D Size) when plotted at a scale of 1:1250

All distances are in metres and decimals thereof.

Bearings and distances were derived from Plan LMP13808.

Integrated Survey Area No. 25,
 Burnaby, NAD'83 (CSRS) 4.0.0.BC.1.MVRD

Legend.
 m² denotes square metres



The City of Burnaby
 Engineering Dept. Survey Section
 6450 Central Exp., Burnaby, B.C.
 V5H 2N6
 Phone: (604) 293-7883
 Fax: (604) 293-7423

This plan lies within the Metro Vancouver Regional District

Certified correct this
 1st day of June, 2022
 Gary Holme
 H54832
 G. N. Holme, BOLS #736

File: 220724 ACAD: 14_V:\31000\31000000\14_027\31000\14\municipal\220724_14\municipal\plan.mxd

Exhibit #2

PLAN OF: PART OF LOTS: N. 1/2 37, N 1/2 38, 41 TO 45 INCLUSIVE, AND 48 TO 53 INCLUSIVE, PLAN 1267;
PART OF REM LOT A, PLAN 4678;
PART OF LOT 24, PLAN LMP36237;
ALL OF DL 83, GROUP 1, NWD. TO ACCOMPANY CITY OF BURNABY PARK DEDICATION BYLAW NO.14476

BCDS 920.026

Scale 1 : 1500

The intended plot size of this plan is 854mm in width by 560mm in height (D Size) when plotted at a scale of 1:1500

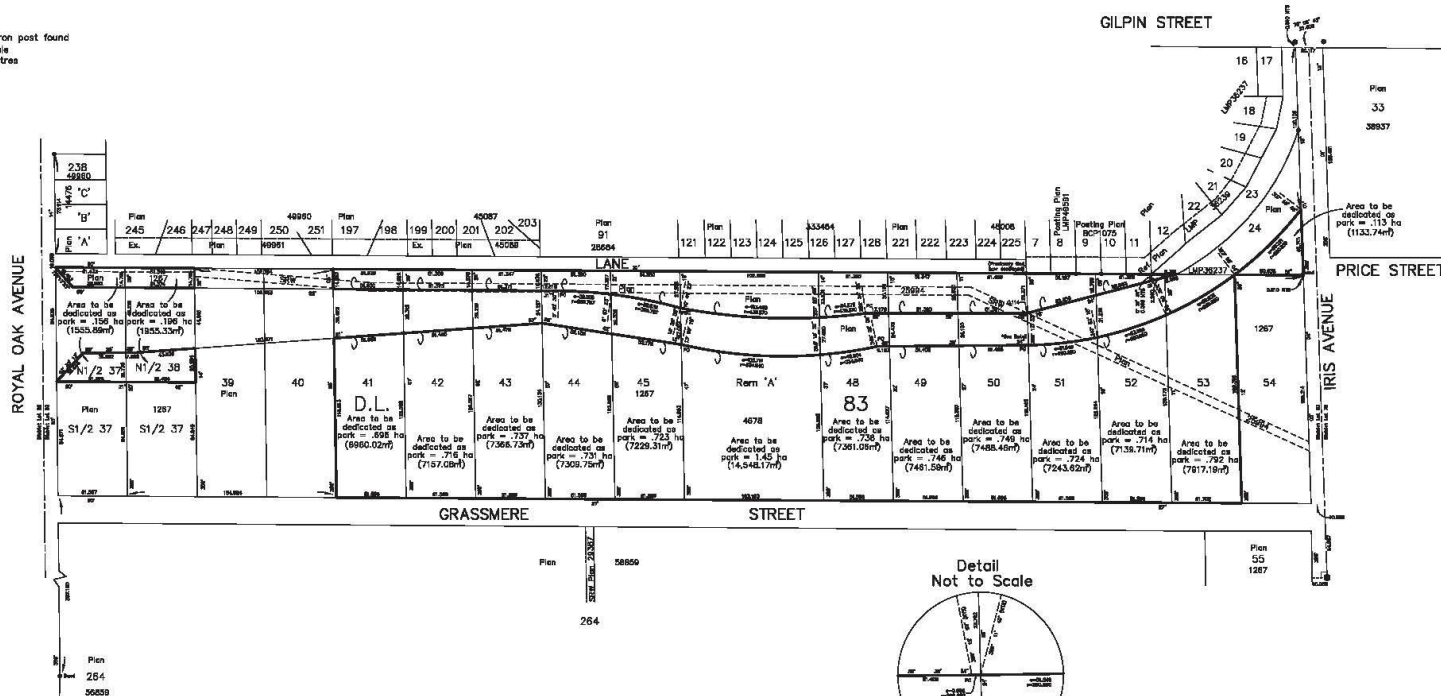
Bearings and distances were derived from field survey measurements and Land Title office records.

Integrated Survey Area No. 25, Burnaby, NAD83 (CSRS) 4.0.0.BC.1.MVRD

All distances are in metres.

Legend

- denotes standard iron post found
- M/S denotes not to scale
- m² denotes square metres
- ha denotes hectares



The City of Burnaby
Integrated Survey Area No. 25
Burnaby, NAD83 (CSRS) 4.0.0.BC.1.MVRD
Plan 1267, 24, 25-253
Plan 4678, 36237

This plan lies within the Metro Vancouver Regional District

Certified correct this
06th day of July, 2022
Holme, Gary
G. N. Heine, BCLS #736