

CITY OF BURNABY

BYLAW NO. 14438

A BYLAW to amend Bylaw No. 4742, being Burnaby Zoning Bylaw 1965, as amended by Bylaw Nos. 11077, 13568, 13650, 13651, 13754, 13785 and 13828 being Burnaby Zoning Bylaw 1965, Amendment Bylaw Nos. 12, 2000, 01, 2016, 43, 2016, 44, 2016, 20, 2017, 29, 2017 and 43, 2017

WHEREAS application for rezoning has been made to the Council;

AND WHEREAS the Council has held a public hearing thereon after duly giving notice of the time and place of such hearing as prescribed by Sections 466 and 467 of the *Local Government Act*, R.S.B.C. 2015, c.1;

NOW THEREFORE the Council of the City of Burnaby ENACTS as follows:

1. This Bylaw may be cited as **BURNABY ZONING BYLAW 1965, AMENDMENT BYLAW NO. 09, 2022.**

2. Bylaw No. 4742, as amended by Bylaw Nos. 11077, 13568, 13650, 13651, 13754, 13785 and 13828, is further amended as follows:

(a) The Map (hereinafter called "Map 'A'"), attached to and forming an integral part of Bylaw No. 4742, being "Burnaby Zoning Bylaw 1965", and designated as the Official Zoning Map of the City of Burnaby, is hereby amended according to the Map (hereinafter called "Map 'B'"), marginally numbered REZ. 4403, annexed to this Bylaw, and in accordance with the explanatory legend, notations, references and boundaries designated, described, delimited and specified in particularity shown upon said Map 'B'; and the various boundaries and districts shown upon said Map 'B' respectively are an amendment of and in addition to the respective districts, designated and marked on said Map 'A' insofar as the same are changed, modified or varied

thereby, and the said Map 'A' shall be deemed to be and is hereby declared to be amended accordingly and the said Map 'B' is hereby declared to be and shall form an integral part of said Map 'A', as if originally incorporated therein and shall be interpreted accordingly.

(b) The Comprehensive Development Plan(s), more particularly described in Bylaw Nos. 11077, 13568, 13650, 13651, 13754, 13785 and 13828, are amended as may be necessary by the development plan entitled "Burnaby Lougheed" prepared by Liquor Distribution Branch and on file in the office of the General Manager Planning and Development; and any development on the lands rezoned by this Bylaw shall be in conformity with the said Comprehensive Development Plans as amended.


Read a first time this 4th day of April, 2022

Read a second time this 9th day of May, 2022

Read a third time this 20th day of June, 2022

Reconsidered and adopted this 25th day of July, 2022

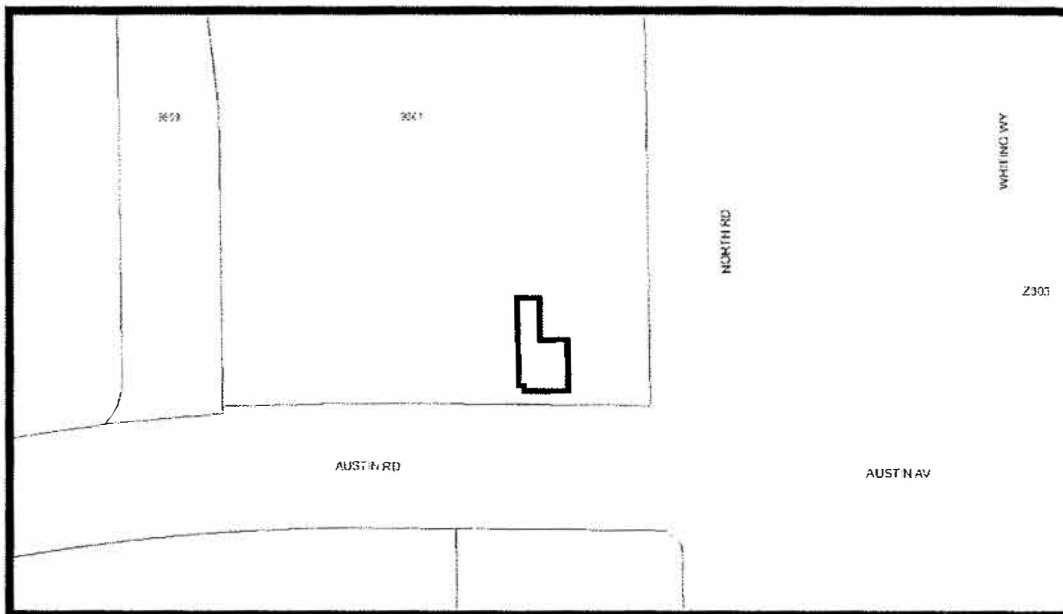

MAYOR


CLERK

BYLAW NUMBER 14438 BEING A BYLAW TO AMEND BYLAW
NUMBER 4742 BEING BURNABY ZONING BYLAW 1965

REZ.21-42



LEGAL: Lot 1 District Lot 4 Group 1 New Westminster District Plan EPP60170



THE AREA(S) SHOWN ABOVE OUTLINED IN BLACK (——) IS (ARE) REZONED

FROM: CD Comprehensive Development District (based on C3 General Commercial District, RM5s Multiple Family Residential District, Lougheed Core Area Master Plan, and Lougheed Town Centre Plan as guidelines)

TO: Amended CD Comprehensive Development District (based on C3 and C3i General Commercial Districts, Lougheed Core Area Master Plan and Lougheed Town Centre Plan as guidelines, and in accordance with the development plan entitled "Burnaby Lougheed" prepared by Liquor Distribution Branch)

		PLANNING AND DEVELOPMENT DEPARTMENT		
Date:	MAR 14 2022	OFFICIAL ZONING MAP		Map "B" No. REZ. 4403
Scale:	1:1,500			
Drawn By:	RW			