

**CITY OF BURNABY**

**BYLAW NO. 14425**

A BYLAW to close and remove the dedication of  
a certain portion of highway

WHEREAS pursuant to section 40 of the *Community Charter* and section 120 of the *Land Title Act*, Council may by bylaw close part of a highway to traffic and remove the dedication of that part of the highway;

AND WHEREAS Council, before adopting this Bylaw, has caused the required statutory public notice of its intention to be given by advertisement;

AND WHEREAS Council deems it expedient and in the public interest to stop up and close to traffic and remove the dedication of that portion of highway more particularly hereinafter described,

NOW THEREFORE the Council of the City of Burnaby ENACTS as follows:

1. This Bylaw may be cited as **BURNABY HIGHWAY CLOSURE BYLAW NO. 1, 2022.**
2. ALL AND SINGULAR those certain parcels or tracts of land, situate, lying and being in the City of Burnaby, in the Province of British Columbia, more particularly known and described as that portion of road dedicated on Plan with Bylaw filed A44067, containing 6.2 m<sup>2</sup>, and that portion of road dedicated on Plan 1930A containing 0.125 ha, all of Block 22, District Lot 95, Group 1, New Westminster District as shown outlined in bold on Reference Plan EPP108402 (hereinafter called “the closed portion of road”), prepared by Mike Bernemann, B.C.L.S., a copy of which is hereunto annexed, is hereby closed to all types of traffic.

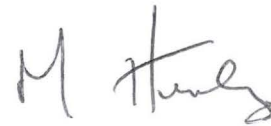
3. The dedication of the closed portion of road as highway is removed.

Read a first time this 7<sup>th</sup> day of March, 2022

Read a second time this 7<sup>th</sup> day of March, 2022

Read a third time this 7<sup>th</sup> day of March, 2022

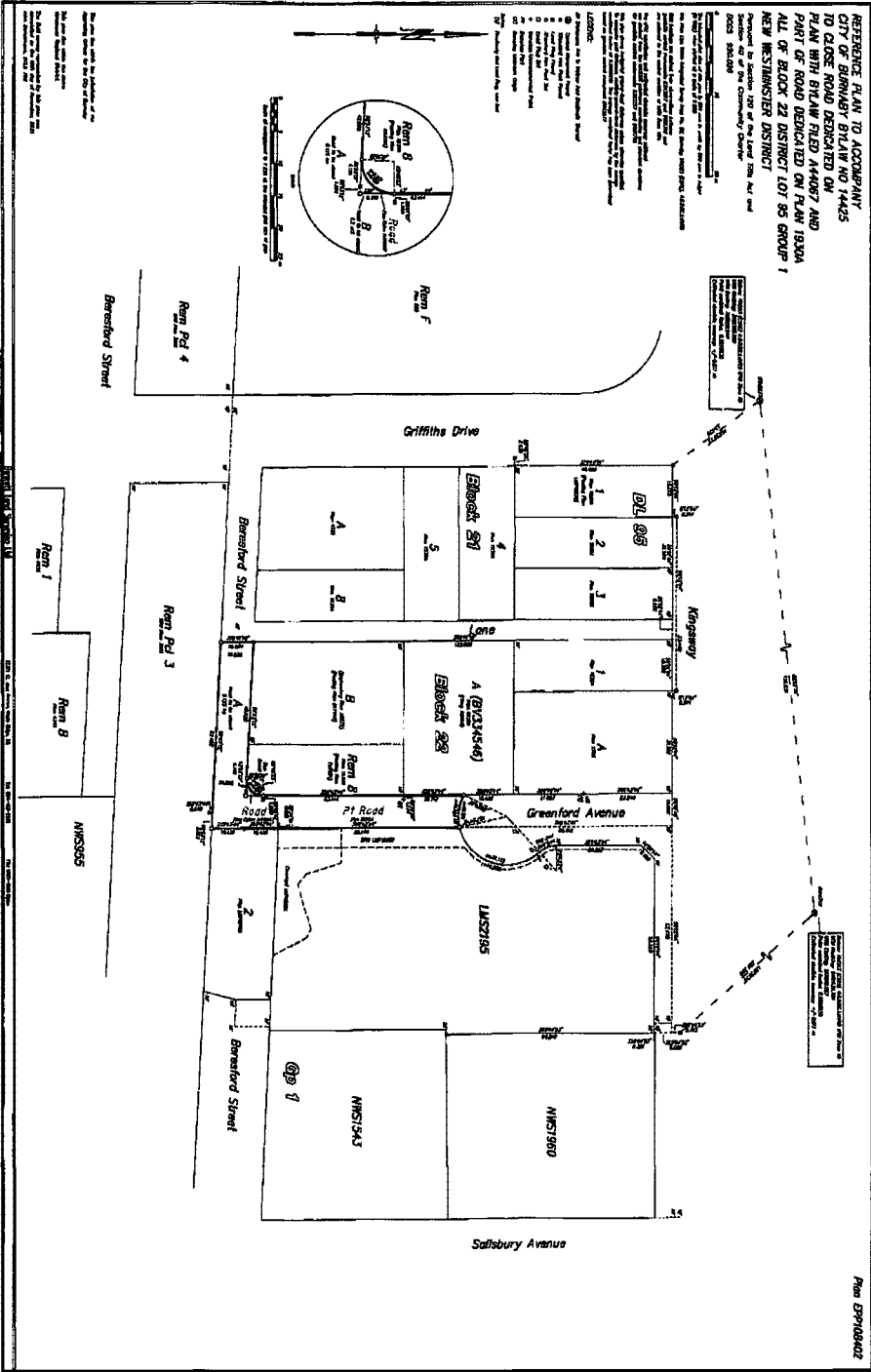
Reconsidered and adopted this 4<sup>th</sup> day of April, 2022



MAYOR



CLERK



Plan EPT108402