

**CITY OF BURNABY**

**BYLAW NO. 14418**

A BYLAW to close and remove the dedication of  
a certain portion of highway

WHEREAS pursuant to section 40 of the *Community Charter* and section 120 of the *Land Title Act*, Council may by bylaw close part of a highway to traffic and remove the dedication of that part of the highway;

AND WHEREAS Council, before adopting this Bylaw, has caused the required statutory public notice of its intention to be given by advertisement;

AND WHEREAS Council deems it expedient and in the public interest to stop up and close to traffic and remove the dedication of that portion of highway more particularly hereinafter described,

NOW THEREFORE the Council of the City of Burnaby ENACTS as follows:

1. This Bylaw may be cited as **BURNABY HIGHWAY CLOSURE BYLAW NO. 3, 2021.**
2. ALL AND SINGULAR those certain parcels or tracts of land, situate, lying and being in the City of Burnaby, in the Province of British Columbia, more particularly known and described as that portion of road (lane) dedicated by Plan 3035 in Block 28, District Lot 29, Group 1, New Westminster District containing 775.4m<sup>2</sup> as shown outlined in bold and hatched on Reference Plan EPP116272 (hereinafter called “the closed portion of road”), prepared by Gary N. Holme, B.C.L.S., a copy of which is hereunto annexed, is hereby closed to all types of traffic.

3. The dedication of the closed portion of road as highway is removed.

Read a first time this 14<sup>th</sup> day of February, 2022

Read a second time this 14<sup>th</sup> day of February, 2022

Read a third time this 14<sup>th</sup> day of February, 2022

Reconsidered and adopted this 21<sup>st</sup> day of March, 2022



MAYOR



CLERK

REFERENCE PLAN TO ACCOMPANY THE CITY OF BURNABY BYLAW NO. 14418 TO REMOVE THE ROAD DEDICATION OF PORTIONS OF ROAD DEDICATED ON PLAN 3035, BLOCK 28, DISTRICT LOT 29, GROUP 1, N.W.D.

PLAN EPP116272

Pursuant to Section 120 of the Land Title Act and Section 40 of the Community Charter

BCGS 92G.026

City of Burnaby

Scale 1 : 750 

The intended plot size of this plan is 432mm in width by 580mm in height (C Size) when plotted at a scale of 1:750

All distances are in metres and decimals thereof.

Integrated Survey Area No. 25,  
Burnaby, NAD'83 (CSRS) 4.0.0.BC.1.MVRD

**Legend**

- denotes standard iron post found
- denotes lead plug found
- ⊙ denotes control monument
- ⊗ denotes standard concrete post found
- ⊘ denotes not found
- ▨ indicates portion of road to be closed
- uo denotes unknown origin
- o/a denotes overall

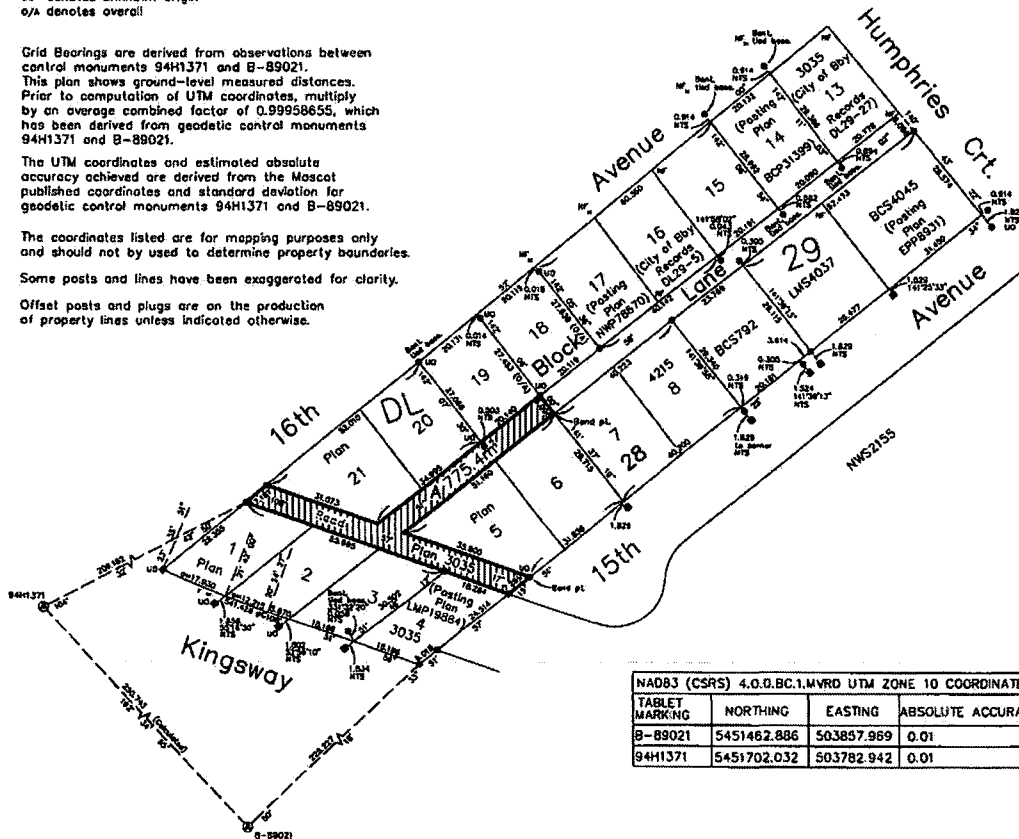
Grid Bearings are derived from observations between control monuments 94H1371 and B-89021.  
This plan shows ground-level measured distances.  
Prior to computation of UTM coordinates, multiply by an average combined factor of 0.99958655, which has been derived from geodetic control monuments 94H1371 and B-89021.

The UTM coordinates and estimated absolute accuracy achieved are derived from the Moscat published coordinates and standard deviation for geodetic control monuments 94H1371 and B-89021.

The coordinates listed are for mapping purposes only and should not be used to determine property boundaries.

Some posts and lines have been exaggerated for clarity.

Offset posts and plugs are on the production of property lines unless indicated otherwise.



NAD83 (CSRS) 4.0.0.BC.1.MVRD UTM ZONE 10 COORDINATES			
TABLE MARKING	NORTHING	EASTING	ABSOLUTE ACCURACY
B-89021	5451462.886	503857.969	0.01
94H1371	5451702.032	503782.942	0.01

The City of Burnaby  
Engineering Dept. Survey Section  
4640 Cassel Way, Burnaby, B.C.  
V5G 1M2  
Phone : (604) 294-7483  
Fax : (604) 294-7423

This plan lies within the Metro Vancouver Regional District

The field survey represented by this plan was completed on the 6th day of January, 2022.

G. N. Home, BCLS #736