

CITY OF BURNABY

BYLAW NO. 14303

A BYLAW to close and remove the dedication of
a certain portion of highway

WHEREAS pursuant to section 40 of the *Community Charter* and section 120 of the *Land Title Act*, Council may by bylaw close part of a highway to traffic and remove the dedication of that part of the highway;

AND WHEREAS Council, before adopting this Bylaw, has caused the required statutory public notice of its intention to be given by advertisement;

AND WHEREAS Council deems it expedient and in the public interest to stop up and close to traffic and remove the dedication of that portion of highway more particularly hereinafter described,

NOW THEREFORE the Council of the City of Burnaby ENACTS as follows:

1. This Bylaw may be cited as **BURNABY HIGHWAY CLOSURE BYLAW NO. 1, 2021.**
2. ALL AND SINGULAR those certain parcels or tracts of land, situate, lying and being in the City of Burnaby, in the Province of British Columbia, more particularly known and described as those portions of road dedicated in District Lot 151, Group 1, New Westminster District:
 - a) by Plan EPP26598 identified as “Parcel A” and containing 209.8m²;
 - b) by Plan 1895 identified as “Parcel B” and containing 417.8m²;
 - c) by Bylaw Plan 45446 identified as “Parcel C” and containing 184.8m²; and
 - d) by Plan 1895 identified as “Parcel D” and containing 564.9m²

all as shown outlined in bold on Reference Plan EPP10958 (hereinafter collectively called “the closed portion of road”), prepared by Jesse Morin, B.C.L.S., a copy of which is hereunto annexed, is hereby closed to all types of traffic.

3. The dedication of the closed portion of road as highway is removed.

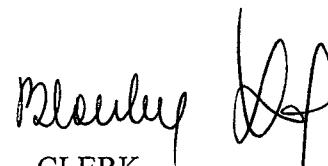
Read a first time this 29th day of March, 2021

Read a second time this 29th day of March, 2021

Read a third time this 29th day of March, 2021

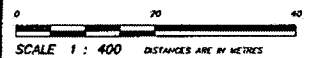
Reconsidered and adopted this 26th day of April, 2021


MAYOR


CLERK

REFERENCE PLAN TO ACCOMPANY
 BYLAW #14303-BURNABY HIGHWAY CLOSURE BYLAW No.1,
 2021 (ROAD CLOSURE #20-00025) TO REMOVE
 THE ROAD DEDICATION OF PARTS OF ROAD DEDICATED ON
 PLANS 1895 AND EPP26598 AND BYLAW PLAN 45446
 ALL OF DISTRICT LOT 151 GROUP 1 NEW WESTMINSTER DISTRICT
 PURSUANT TO SECTION 120 OF THE LAND TITLE ACT
 AND SECTION 40 OF THE COMMUNITY CHARTER

BCGS 92G.026



THE INTENDED PLOT SCALE OF THIS PLAN IS
 500 mm W WIDTH BY 432 mm H HEIGHT (C SIZE)
 WHEN PLOTTED AT A SCALE OF 1:400

INTEGRATED SURVEY AREA No. 25, BURNABY
 NA08B(CSRS) 4.0.0.BC.1.MVRO

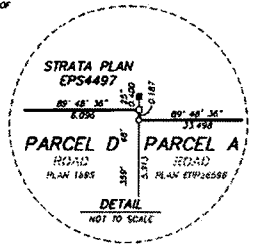
GRID BEARINGS ARE DERIVED FROM OBSERVATIONS BETWEEN
 GEODESIC CONTROL MONUMENTS 512 AND 83M6214 AND ARE
 REFERRED TO CENTRAL MERIDIAN OF UTM ZONE 10.

THE UTM COORDINATES AND ESTIMATED ABSOLUTE ACCURACY
 ACHIEVED ARE DERIVED FROM THE MASCOT PUBLISHED COORDINATES
 FOR GEODESIC CONTROL MONUMENTS 512 AND 83M6214.

THIS PLAN SHOWS HORIZONTAL GROUND-LEVEL DISTANCES, UNLESS
 OTHERWISE SPECIFIED TO COMPUTE GRID DISTANCES. MULTIPLE
 GROUND-LEVEL DISTANCES BY THE AVERAGE CORRECTION FACTOR OF
 0.9999031 WHICH HAS BEEN DERIVED FROM GEODESIC CONTROL
 MONUMENTS 512 AND 83M6214.

LEGEND

- FOUND PLACED
- ⊙ DENOTES CONTROL MONUMENT
 - ⊠ DENOTES LEAD PLUG
 - ⊙ DENOTES STANDARD IRON POST
 - m² DENOTES SQUARE METRES

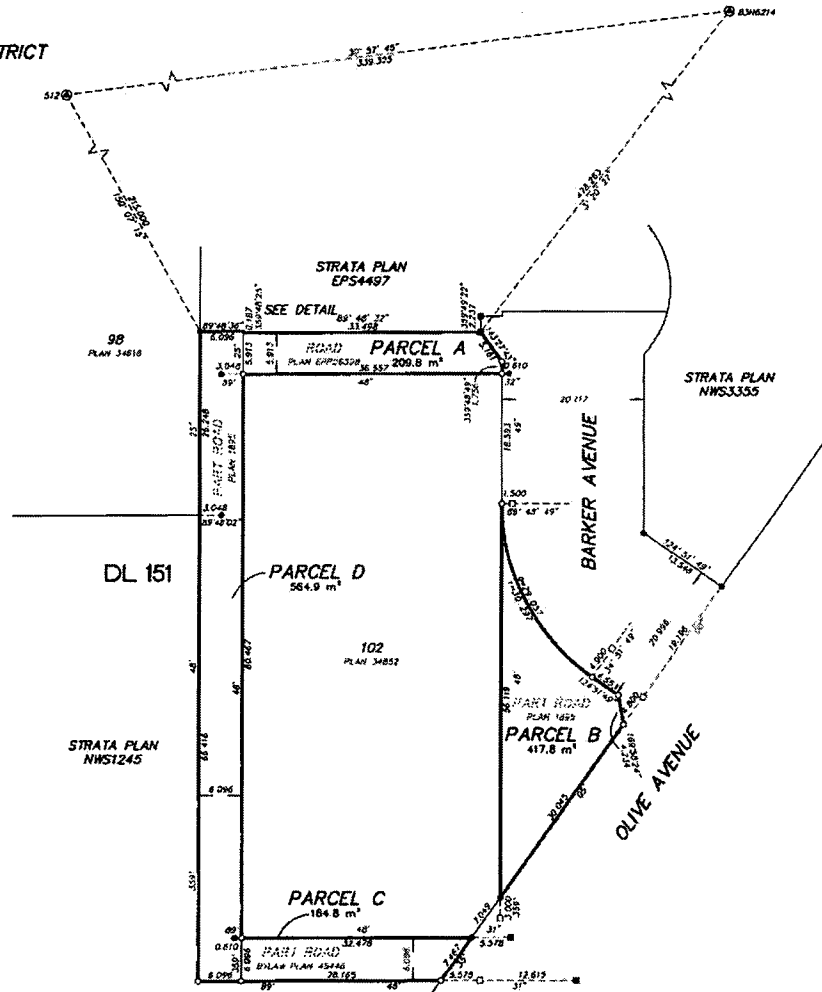


BOOK OF REFERENCE		
DESCRIPTION	DESIGNATION	AREA
PART ROAD DEDICATED BY PLAN EPP26598	PARCEL A	209.0 m ²
PART ROAD DEDICATED BY PLAN 1895	PARCEL B	417.8 m ²
PART ROAD DEDICATED BY BYLAW PLAN 45446	PARCEL C	184.8 m ²
PART ROAD DEDICATED BY PLAN 1895	PARCEL D	564.9 m ²
TOTAL		1376.5 m ²

NAD83 (CSRS) #3.0.BC.1.MVRO UTM ZONE 10 COORDINATES				
MARKET	NORTHING	EASTING	ABSOLUTE ACCURACY	
512	545334.086 m	499018.371 m	0.04 m	
83M6214	545354.714 m	499192.806 m	0.04 m	

THE FIELD SURVEY REPRESENTED BY THIS PLAN WAS
 COMPLETED ON THE 3rd DAY OF MARCH 2021
 JESSIE MORSE, DCLS (050)
 EDC#241739

THIS PLAN LIES WITHIN THE METRO VANCOUVER REGIONAL DISTRICT



BUTLER SUNDVICK
 4 - 18088 64th Ave
 Surrey, BC V4W 3E4
 www.butlersundvick.ca
 Tel. 604-513-9511
 F#4: 5036
 Dwg: 5036-RC1