

**CITY OF BURNABY**

**BYLAW NO. 14214**

A BYLAW to close and remove the dedication of  
a certain portion of highway

WHEREAS pursuant to section 40 of the *Community Charter* and section 120 of the *Land Title Act*, Council may by bylaw close part of a highway to traffic and remove the dedication of that part of the highway;

AND WHEREAS Council, before adopting this Bylaw, has caused the required statutory public notice of its intention to be given by advertisement;

AND WHEREAS Council deems it expedient and in the public interest to stop up and close to traffic and remove the dedication of that portion of highway more particularly hereinafter described,

NOW THEREFORE the Council of the City of Burnaby ENACTS as follows:

1. This Bylaw may be cited as **BURNABY HIGHWAY CLOSURE BYLAW NO. 2, 2020.**
2. ALL AND SINGULAR that certain parcel or tract of land, situate, lying and being in the City of Burnaby, in the Province of British Columbia, more particularly known and described as a portion of road dedicated on Plan 1191 adjacent to:
  - a) Parcel "A" (Explanatory Plan 24921) Lots 11 and 12 District Lot 153 Group 1 NWD Plan 1191,
  - b) Lot 13 District Lot 153 Group 1 NWD Plan 1191,
  - c) Lot 14 District Lot 153 Group 1 NWD Plan 1191 and

d) Lot "B" District Lots 151 and 153 Group 1 NWD Plan 6950,

and identified as "PARCEL "A" 307.7m<sup>2</sup>", as shown outlined in bold on Reference Plan EPP105332 (hereinafter called "the closed portion of road"), prepared by William P. Wong, B.C.L.S., a copy of which is hereunto annexed, is hereby closed to all types of traffic.


3. The dedication of the closed portion of road as highway is removed.


Read a first time this 28<sup>th</sup> day of September, 2020

Read a second time this 28<sup>th</sup> day of September, 2020

Read a third time this 28<sup>th</sup> day of September, 2020

Reconsidered and adopted by Council this 25<sup>th</sup> day of January, 2021

  
MAYOR

  
CLERK

PLAN EPP105332

REFERENCE PLAN TO ACCOMPANY CITY OF BURNABY ROAD CLOSING AND REMOVAL OF ROAD DEDICATION

BYLAW NO. 14214 OF A PORTION OF ROAD DEDICATED ON PLAN 1191 ADJACENT TO:

PARCEL "A" (EXPLANATORY PLAN 24921) LOTS 11 AND 12 DISTRICT LOT 153 GROUP 1 NWD PLAN 1191,

LOT 13 DISTRICT LOT 153 GROUP 1 NWD PLAN 1191,

LOT 14 DISTRICT LOT 153 GROUP 1 NWD PLAN 1191 AND

LOT "B" DISTRICT LOTS 151 AND 153 GROUP 1 NWD PLAN 6950

PURSUANT TO SECTION 120 OF THE LAND TITLE ACT AND SECTION 40 OF THE COMMUNITY CHARTER

BCGS 92G.025

CITY OF BURNABY



**LEGEND**

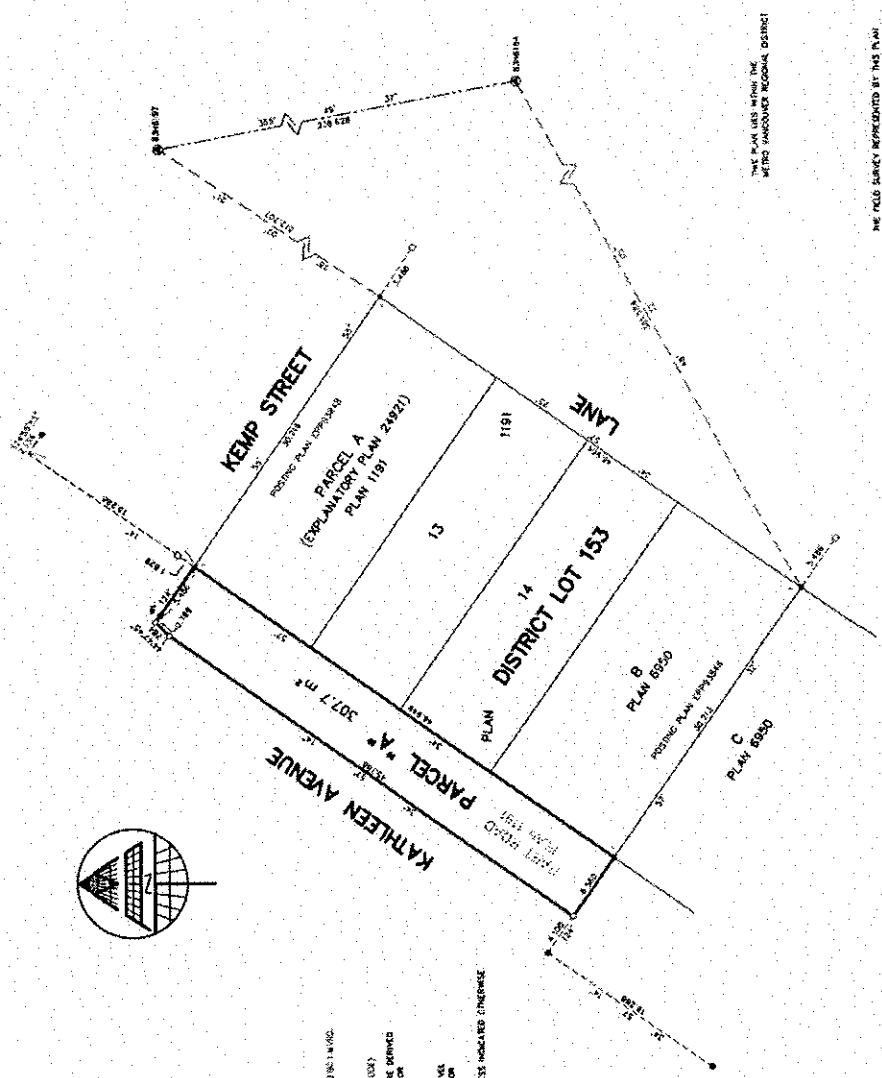
- ALL HORIZONTAL GRADING-LEVEL DISTANCES ARE IN METRES.
- THE WITHINAGE PLAN AREA OF THIS PLAN IS IDENTIFIED BY A SHADING PATTERN.
- INDICATES CONTROL MONUMENT TANGENT.
- INDICATES STANDARD MONUMENT FOUND.
- INDICATES MONUMENT PLACED.
- INDICATES LEAD PILE FOUND.
- INDICATES LEAD PILE PLACED.
- INDICATES WITNESS.
- THIS PLAN SHOWS ONE OR MORE WITNESS POINTS WHICH ARE NOT SET ON THE TRAIL CORNER(S).

**NOTES**

INTERFERED SURVEY AREA NO. 26, CITY OF BURNABY, BRAS (2005) (2005) 1:1000.  
 CURB MARKERS ARE DERIVED FROM OBSERVATIONS SETBACK FROM THE CURB TO THE MONUMENTS ARE REFERRED TO THE CENTRAL MIDDLE OF THE ZONE TO (125 WEST) (LONGITUDINAL).  
 THE LINE CORNER(S) AND ESTIMATED ACCURACY ANGLES ARE DERIVED FROM THE MOST PRECISE COORDINATES AND STANDARD DEVIATIONS FOR CURB CONTROL MONUMENTS (2005) AND (2005).  
 THIS PLAN SHOWS HORIZONTAL DISTANCE DISTANCES UNLESS OTHERWISE NOTED. THE DISTANCES BETWEEN THE MONUMENTS AND THE DISTANCES BETWEEN THE MONUMENTS AND THE CORNER(S) OF A PROPERTY ARE ESTIMATED BASED ON CURB CONTROL MONUMENT DATA.  
 OFFSET POINTS AND PLUS ARE ON PRODUCTIONS OF PROPERTY LINES UNLESS INDICATED OTHERWISE.

MARKER	DATE	TYPE	COORDINATES
1	2005	STANDARD	473,762.722
2	2005	STANDARD	473,762.722
3	2005	STANDARD	473,762.722
4	2005	STANDARD	473,762.722
5	2005	STANDARD	473,762.722
6	2005	STANDARD	473,762.722
7	2005	STANDARD	473,762.722
8	2005	STANDARD	473,762.722
9	2005	STANDARD	473,762.722
10	2005	STANDARD	473,762.722
11	2005	STANDARD	473,762.722
12	2005	STANDARD	473,762.722
13	2005	STANDARD	473,762.722
14	2005	STANDARD	473,762.722
15	2005	STANDARD	473,762.722
16	2005	STANDARD	473,762.722
17	2005	STANDARD	473,762.722
18	2005	STANDARD	473,762.722
19	2005	STANDARD	473,762.722
20	2005	STANDARD	473,762.722
21	2005	STANDARD	473,762.722
22	2005	STANDARD	473,762.722
23	2005	STANDARD	473,762.722
24	2005	STANDARD	473,762.722
25	2005	STANDARD	473,762.722
26	2005	STANDARD	473,762.722
27	2005	STANDARD	473,762.722
28	2005	STANDARD	473,762.722
29	2005	STANDARD	473,762.722
30	2005	STANDARD	473,762.722
31	2005	STANDARD	473,762.722
32	2005	STANDARD	473,762.722
33	2005	STANDARD	473,762.722
34	2005	STANDARD	473,762.722
35	2005	STANDARD	473,762.722
36	2005	STANDARD	473,762.722
37	2005	STANDARD	473,762.722
38	2005	STANDARD	473,762.722
39	2005	STANDARD	473,762.722
40	2005	STANDARD	473,762.722
41	2005	STANDARD	473,762.722
42	2005	STANDARD	473,762.722
43	2005	STANDARD	473,762.722
44	2005	STANDARD	473,762.722
45	2005	STANDARD	473,762.722
46	2005	STANDARD	473,762.722
47	2005	STANDARD	473,762.722
48	2005	STANDARD	473,762.722
49	2005	STANDARD	473,762.722
50	2005	STANDARD	473,762.722

**MATSON PECK & TOPUSS**  
 SURVEYORS & ENGINEERS  
 2150 - 1110 AVENUE WY  
 BURNABY, BC V5C 4S1  
 PH: 604-270-5321  
 FAX: 604-270-4127  
 CANTEL: (905) 463-46-001 (INC)  
 B-20-18967-3-REF-1



THE PLAN LIES WITHIN THE  
 WEST VANCOUVER REGIONAL DISTRICT

THE FIELD SURVEY REPRESENTED BY THIS PLAN  
 WAS COMPLETED BY WILLIAM P. PECK, P.E.  
 WILLIAM P. PECK, P.E. (P07)