

CITY OF BURNABY

BYLAW NO. 14037

A BYLAW to amend Bylaw No. 4742, being Burnaby Zoning

Bylaw 1965, as amended by Bylaw Nos. 9907, 13800, and 13951
being Burnaby Zoning Bylaw 1965, Amendment Bylaw Nos. 30,
1993, 33, 2017, and 45, 2018

WHEREAS application for rezoning has been made to the Council;

AND WHEREAS the Council has held a public hearing thereon after duly giving notice of the time and place of such hearing as prescribed by Sections 466 and 467 of the *Local Government Act*, R.S.B.C. 2015;

NOW THEREFORE the Council of the City of Burnaby ENACTS as follows:

1. This Bylaw may be cited as **BURNABY ZONING BYLAW 1965, AMENDMENT BYLAW NO. 19, 2019.**

2. Bylaw No. 4742, as amended by Bylaw Nos. 9907, 13800, and 13951 is further amended as follows:

(a) The Map (hereinafter called "Map 'A'"), attached to and forming an integral part of Bylaw No. 4742, being "Burnaby Zoning Bylaw 1965", and designated as the Official Zoning Map of the City of Burnaby, is hereby amended according to the Map (hereinafter called "Map 'B'"), marginally numbered R.Z. 4177, annexed to this Bylaw, and in accordance with the explanatory legend, notations, references and boundaries designated, described, delimited and specified in particularity shown upon said Map 'B'; and the various boundaries and districts shown upon said

Map 'B' respectively are an amendment of and in addition to the respective districts, designated and marked on said Map 'A' insofar as the same are changed, modified or varied thereby, and the said Map 'A' shall be deemed to be and is hereby declared to be amended accordingly and the said Map 'B' is hereby declared to be and shall form an integral part of said Map 'A', as if originally incorporated therein and shall be interpreted accordingly.

(b) The Comprehensive Development Plans more particularly described in Bylaw Nos. 9907, 13800, and 13951 are amended in accordance with the adopted Development Plan entitled "Coanda-Mezzanine Addition" prepared by Taylor Kurtz Architecture and Design Inc. and on file in the office of the Director Planning and Building; and any development on the lands rezoned by this Bylaw shall be in conformity with the said Comprehensive Development Plans as amended.

Read a first time this 10th day of June 2019

Read a second time this 8th day of July 2019

Read a third time this 29th day of July 2019

Reconsidered and adopted by Council this 29th day of July 2019



MAYOR

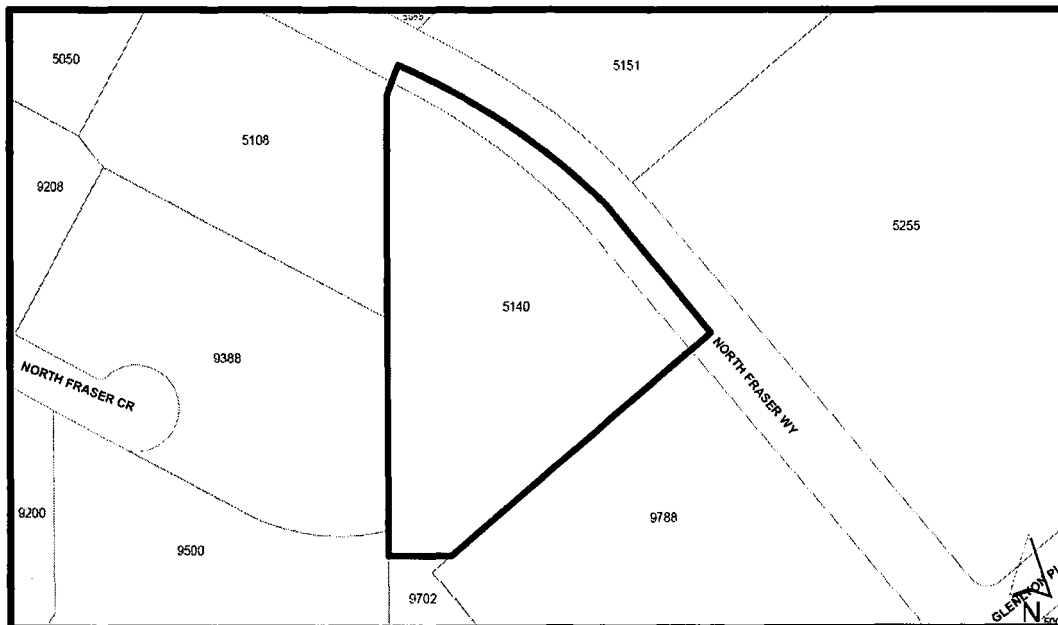


CLERK

BYLAW NUMBER 14037 BEING A BYLAW TO AMEND BYLAW
NUMBER 4742 BEING BURNABY ZONING BYLAW 1965

REZ.19-18


LEGAL: Lot 1, DL 165, Group 1, NWD Plan EPP79251



THE AREA(S) SHOWN ABOVE OUTLINED IN BLACK (————) IS (ARE) REZONED

FROM: CD Comprehensive Development District (based on M2 General Industrial District and M5 Light Industrial District)

TO: Amended CD Comprehensive Development District (based on M2 General Industrial District, M5 Light Industrial District and Big Bend Development Plan guidelines and in accordance with the development plan entitled "Coanda – Mezzanine Addition" prepared by Taylor Kurtz Architecture and Design Inc.)

	PLANNING AND BUILDING DEPARTMENT		
Date: JUN 04 2019	OFFICIAL ZONING MAP		
scale: 1:2,700			Map "B" No. REZ. 4177
Drawn By: AY			