

CITY OF BURNABY

BYLAW NO. 13887

A BYLAW to close and remove the dedication of
a certain portion of highway

WHEREAS pursuant to section 40 of the *Community Charter* and section 120 of the *Land Title Act* the Council may by bylaw close part of a highway to traffic and remove the dedication of that part of the highway;

AND WHEREAS the Council, before adopting this Bylaw, has caused the required statutory public notice of its intention to be given by advertisement;

AND WHEREAS the Council deems it expedient and in the public interest to stop up and close to traffic and remove the dedication of that portion of highway more particularly hereinafter described;

NOW THEREFORE the Council of the City of Burnaby ENACTS as follows:

1. This Bylaw may be cited as **BURNABY HIGHWAY CLOSURE BYLAW NO. 3, 2018.**

2. ALL AND SINGULAR that certain parcel or tract of land, situate, lying and being in the City of Burnaby, in the Province of British Columbia, more particularly known and described as all that portion of lane in District Lot 69, Group 1, New Westminster District, dedicated by Plan 4369, containing 96.4m² (hereinafter called "the closed portion of lane") and that portion of road in District Lot 69, Group 1, New Westminster District, dedicated by Plan 1321, containing 0.121ha (hereinafter called "the closed portion of road"), both shown outlined on Reference Plan prepared by Steve Wong, B.C.L.S., and certified in the Land Title Office under Number EPP78124, a copy of which is hereunto annexed are hereby closed to all types of traffic.

3. The dedications of the closed portion of lane and closed portion of road as highway are removed.

Read a first time this 11th day of June 2018

Read a second time this 11th day of June 2018

Read a third time this 11th day of June 2018

Reconsidered and adopted this 9th day of July 2018


MAYOR



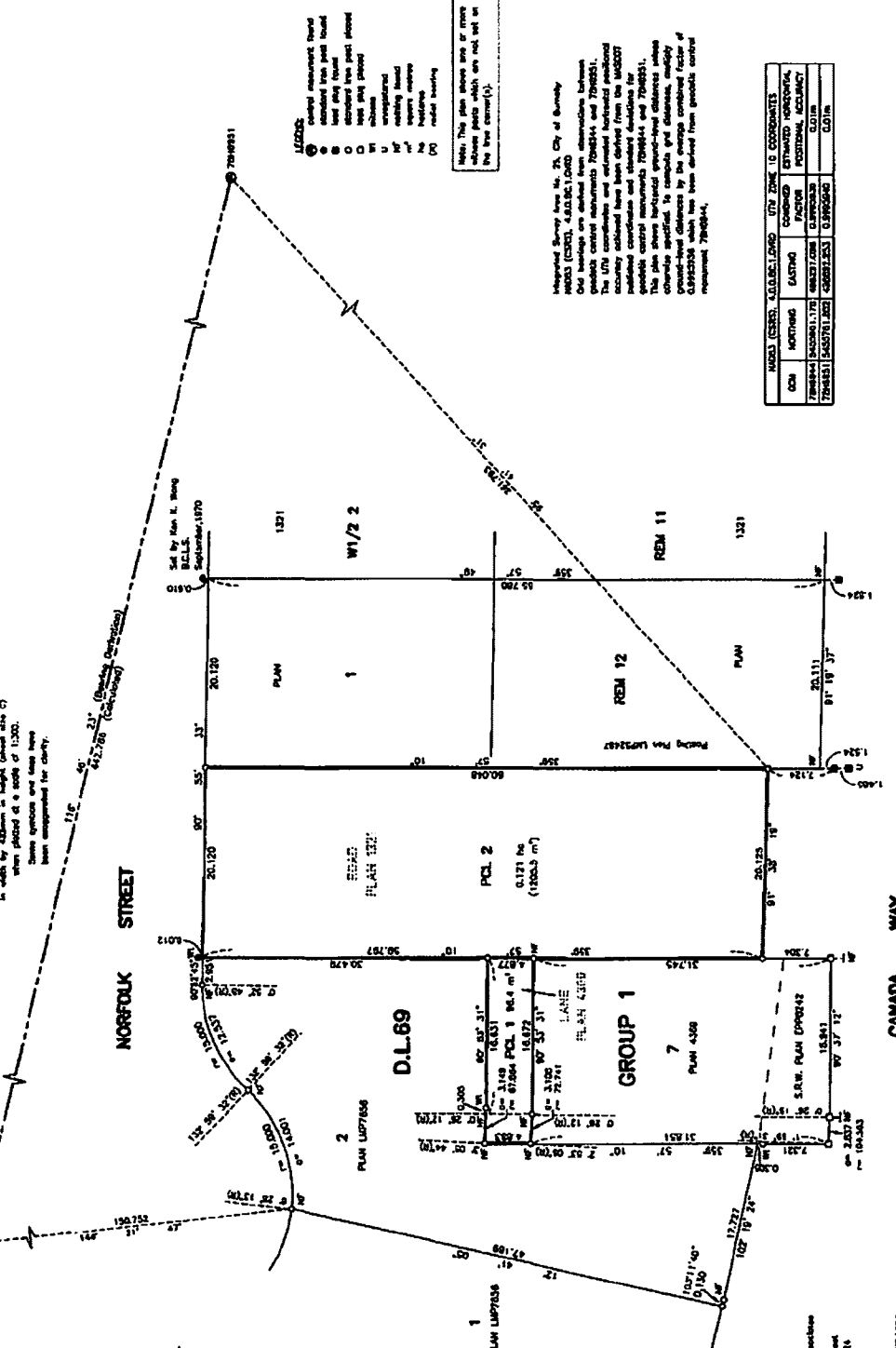
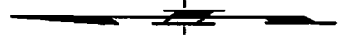
CLERK

PLAN EPP78124

REFERENCE PLAN TO ACCOMPANY THE CITY OF BURMAY BYLAW NUMBER 13887 TO REMOVE A PART OF THE LANE AND ROAD DEDICATION FOR THE LANE DEDICATED BY PLAN 4369 AND THE ROAD DEDICATED BY PLAN 1321, GROUP 1, DISTRICT LOT 69, NEW WESTMINSTER DISTRICT

PURSUANT TO SECTION 120, LAND TITLE ACT AND SECTION 40 OF THE COMMUNITY CHARTER
E0058926.025

All distances are in metres and feet/inches
Distances unless otherwise indicated
The intended lot size of this plan is 5600sqm
in which for 4300sqm is being (land area 17)
when placed at a scale of 1:200.
Some symbols and lines have
been manipulated for clarity.



- (S) control monument found
- (●) control monument not found
- (○) control monument not located
- (◇) control monument located
- (○) road plan centre
- (W) unoccupied
- (U) unoccupied
- (V) existing road
- (H) highway
- (R) railway
- (D) road bearing

Note: This plan shows lots of survey which are not set in the line corner(s).

Integrated Survey from 85, 25, City of Burnaby
Old bearings are adjusted from observations between
control monuments 7808514 and 7808551.
The UTM coordinates are estimated horizontal residuals
for the control monuments. The UTM coordinates and
estimated horizontal residuals are used to calculate
the adjusted bearings and distances for the control
monuments 7808514 and 7808551.
This plan shows horizontal ground-level distances unless
otherwise specified. To compute grid distances, multiply
the ground-level distances by the average combined factor of
0.999842548. The bearings have been derived from geoidal control
measurement 7808514.

NAD83 (CSRS)	U.T.M. COORDINATES	UTM ZONE	ID COORDINATES
ECM	NORTHING	EASTING	COMBINED HORIZONTAL POSITIONAL ACCURACY
7808514	5455051.176	482537.936	0.021m
7808551	5455071.225	482575.551	0.019m

The field survey represented by this plan was completed on the 20th day of March, 2015.
Steven L. Wong, B.C.L.S., R.S.

This plan fits within the before-mentioned Registered District.

FILE: SN-2902

Ken L. Wong and Associates
S.L. Lord Surveyor
2600 West Havelock Street
Burnaby, B.C. V5B 1R6
Telephone: 294-0851
Fax: 294-8525
2015-03-20
B.C.A. FILE: 100133386/020
B-7540, R-11026
Drawn by: BH