

CITY OF BURNABY

BYLAW NO. 13833

A BYLAW to close and remove the dedication of
a certain portion of highway

WHEREAS pursuant to section 40 of the *Community Charter* and section 120 of the *Land Title Act* the Council may by bylaw close part of a highway to traffic and remove the dedication of that part of the highway;

AND WHEREAS the Council, before adopting this Bylaw, has caused the required statutory public notice of its intention to be given by advertisement;

AND WHEREAS the Council deems it expedient and in the public interest to stop up and close to traffic and remove the dedication of that portion of highway more particularly hereinafter described;

NOW THEREFORE the Council of the City of Burnaby ENACTS as follows:

1. This Bylaw may be cited as **BURNABY HIGHWAY CLOSURE BYLAW NO. 1, 2018.**
2. ALL AND SINGULAR that certain parcel or tract of land, situate, lying and being in the City of Burnaby, in the Province of British Columbia, more particularly known and described as all that portion of lane in District Lot 30, Group 1, New Westminster District, dedicated by Plan 50955, containing 91.0m² (hereinafter called "the closed portion of lane") shown outlined on Reference Plan prepared by Eugene Wong, B.C.L.S., and certified in the Land Title Office under Number EPP78406, a copy of which is hereunto annexed is hereby closed to all types of traffic.

REFERENCE PLAN TO ACCOMPANY CITY OF BURNABY
 ROAD DEDICATION CANCELLATION BYLAW NO. 13833
 OF A PORTION OF ROAD DEDICATED ON PLAN 50955
 DISTRICT LOT 30 GROUP 1
 NEW WESTMINSTER DISTRICT

PLAN EPP78406

PURSUANT TO SECTION 120, LAND TITLE ACT
 AND SECTION 40 OF THE COMMUNITY CHARTER

BOOK 920.028

LEGEND

SCALE 1:500



ALL DISTANCES ARE IN METRES
 THE REFERRED PLAN SIZE OF THIS PLAN
 IS SHOWN IN HOOD'S OF BROWN IN HOOD'S (B) 1027
 WHICH PLATTED AT A SCALE OF 1:500
 HYPERMETER SURVEY AREA ACRES, CITY OF BURNABY, B.C.
 4063 (2005) 4.0 B, B.C. 1 (2005)

THIS SURVEY WAS CONDUCTED FROM OBSERVATIONS BETWEEN
 GEODETIC CONTROL, MONUMENTS 8441149 AND 8441208
 THE UTM COORDINATES AND ESTIMATED HORIZONTAL POSITIONAL
 ACCURACY ACHIEVED ARE DERIVED FROM BURNABY PLANNING
 COORDINATES AND STANDARD DEVIATIONS FOR GEODETIC CONTROL,
 MONUMENTS 8441149 AND 8441208

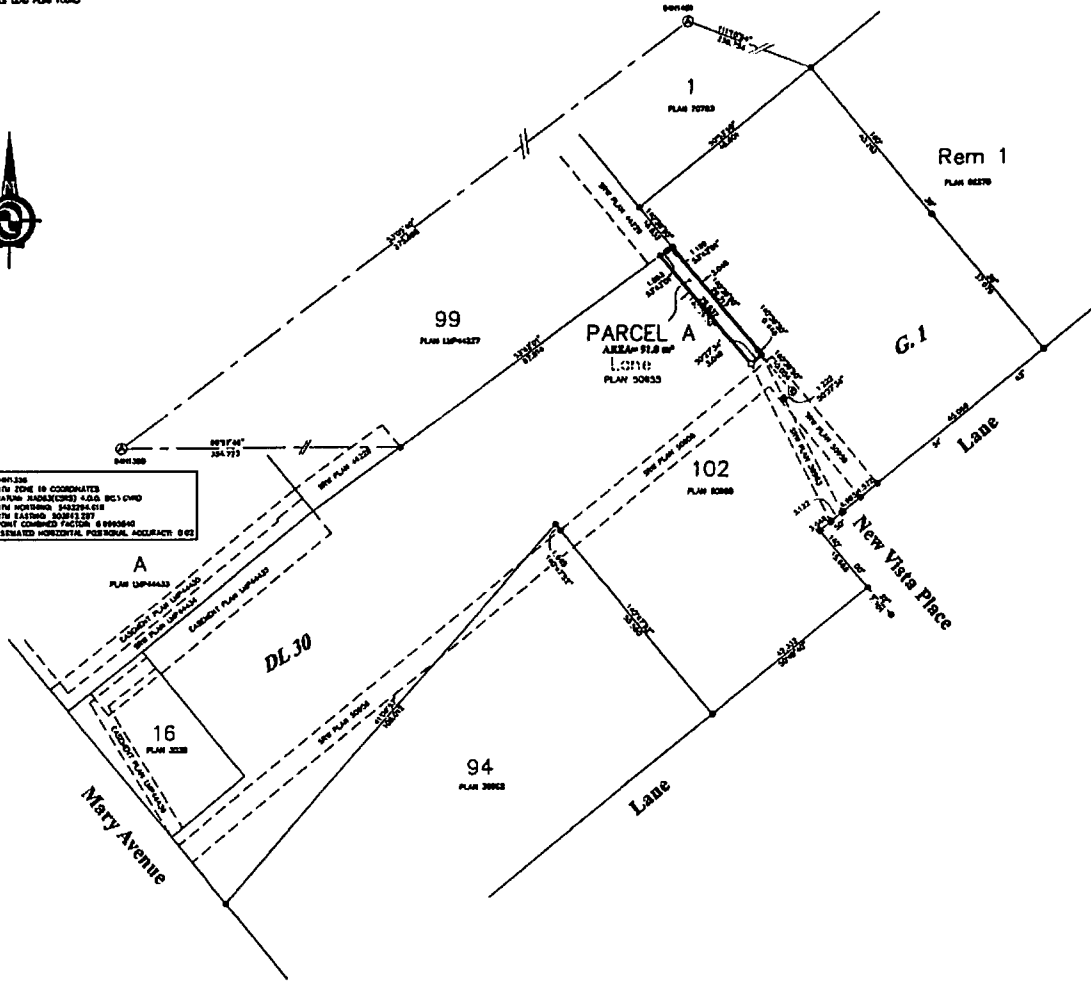
THIS PLAN SHOWS HORIZONTAL, GROUND-LEVEL,
 DISTANCES UNLESS OTHERWISE SPECIFIED TO COMPUTE
 AND DISTANCES, MULTIPLY GROUND-LEVEL DISTANCES
 BY THE AVERAGE CORRECTION FACTOR IS PROVIDED WHICH
 HAS BEEN DERIVED FROM GEODETIC CONTROL, MONUMENTS
 8441149 AND 8441208

- INDICATES CONTROL MONUMENT FOUND
- ⊙ INDICATES STANDING CONCRETE POST FOUND
- ⊙ INDICATES STANDING IRON POST FOUND
- ⊙ INDICATES STANDING IRON POST PLACED
- ⊙ INDICATES LEAD PILE FOUND

50955
 UTM ZONE 10 COORDINATES
 DATUM: NAD83(2011) 4.0 B, B.C. 1 (2005)
 UTM NORTHING: 542294.618
 UTM EASTING: 50955.000
 POINT CORRECTION FACTOR: 0.9999840
 ESTIMATED HORIZONTAL POSITIONAL ACCURACY: 0.02



50955
 UTM ZONE 10 COORDINATES
 DATUM: NAD83(2011) 4.0 B, B.C. 1 (2005)
 UTM NORTHING: 542294.618
 UTM EASTING: 50955.000
 POINT CORRECTION FACTOR: 0.9999840
 ESTIMATED HORIZONTAL POSITIONAL ACCURACY: 0.02



3. The dedication of the closed portion of lane as highway is removed.


Read a first time this 22nd day of January 2018

Read a second time this 22nd day of January 2018

Read a third time this 22nd day of January 2018

Reconsidered and adopted this 26th day of February 2018


MAYOR


CLERK