

**CITY OF BURNABY**

**BYLAW NO. 13770**

A BYLAW to close and remove the dedication of  
a certain portion of highway

WHEREAS pursuant to section 40 of the *Community Charter* and section 120 of the *Land Title Act* the Council may by bylaw close part of a highway to traffic and remove the dedication of that part of the highway;

AND WHEREAS the Council, before adopting this Bylaw, has caused the required statutory public notice of its intention to be given by advertisement;

AND WHEREAS the Council deems it expedient and in the public interest to stop up and close to traffic and remove the dedication of that portion of highway more particularly hereinafter described;

NOW THEREFORE the Council of the City of Burnaby ENACTS as follows:

1. This Bylaw may be cited as **BURNABY HIGHWAY CLOSURE BYLAW NO. 3, 2017.**
2. ALL AND SINGULAR that certain parcel or tract of land, situate, lying and being in the City of Burnaby, in the Province of British Columbia, more particularly known and described as all that portion of lane in District Lot 152, Group 1, New Westminster District, dedicated by Plan 7803, containing 228.0m<sup>2</sup> (hereinafter called "the closed portion of lane") shown outlined on Reference Plan prepared by William P. Wong, B.C.L.S., and certified in the Land Title Office under Number EPP71223, a copy of which is hereunto annexed is hereby closed to all types of traffic.

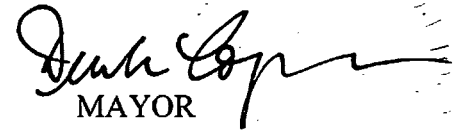
3. The dedication of the closed portion of lane as highway is removed.

Read a first time this 12<sup>th</sup> day of June 2017

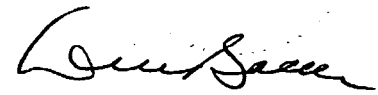
Read a second time this 12<sup>th</sup> day of June 2017

Read a third time this 12<sup>th</sup> day of June 2017

Reconsidered and adopted this 24<sup>th</sup> day of July 2017



MAYOR



CLERK

**REFERENCE PLAN TO ACCOMPANY  
CITY OF BURNABY LANE CLOSING AND  
REMOVAL OF LANE DEDICATION BYLAW No.13770  
OF A PORTION OF LANE DEDICATED ON PLAN 7803  
DISTRICT LOT 152 GROUP 1 NEW WESTMINSTER DISTRICT  
BCGS 92G.026**

**PLAN EPP71223**

PURSUANT TO SECTION 120 OF THE LAND TITLE ACT  
AND SECTION 40 OF THE COMMUNITY CHARTER

FOR LANE CLOSURE PURPOSES

SCALE 1:400



ALL DISTANCES ARE IN METRES.

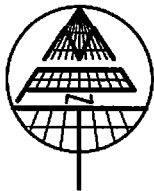
THE INTENDED PLOT SIZE OF THIS PLAN IS 432mm IN WIDTH BY 560mm IN HEIGHT (C SIZE) WHEN PLOTTED AT A SCALE 1:400.

INTEGRATED SURVEY AREA NO. 25, CITY OF BURNABY, NAD83 (CSRS) 4.0.0.BC.1.GVRD

GRID BEARINGS ARE DERIVED FROM OBSERVATIONS BETWEEN GEODETIC CONTROL MONUMENTS 87H3241 AND 87H3242.

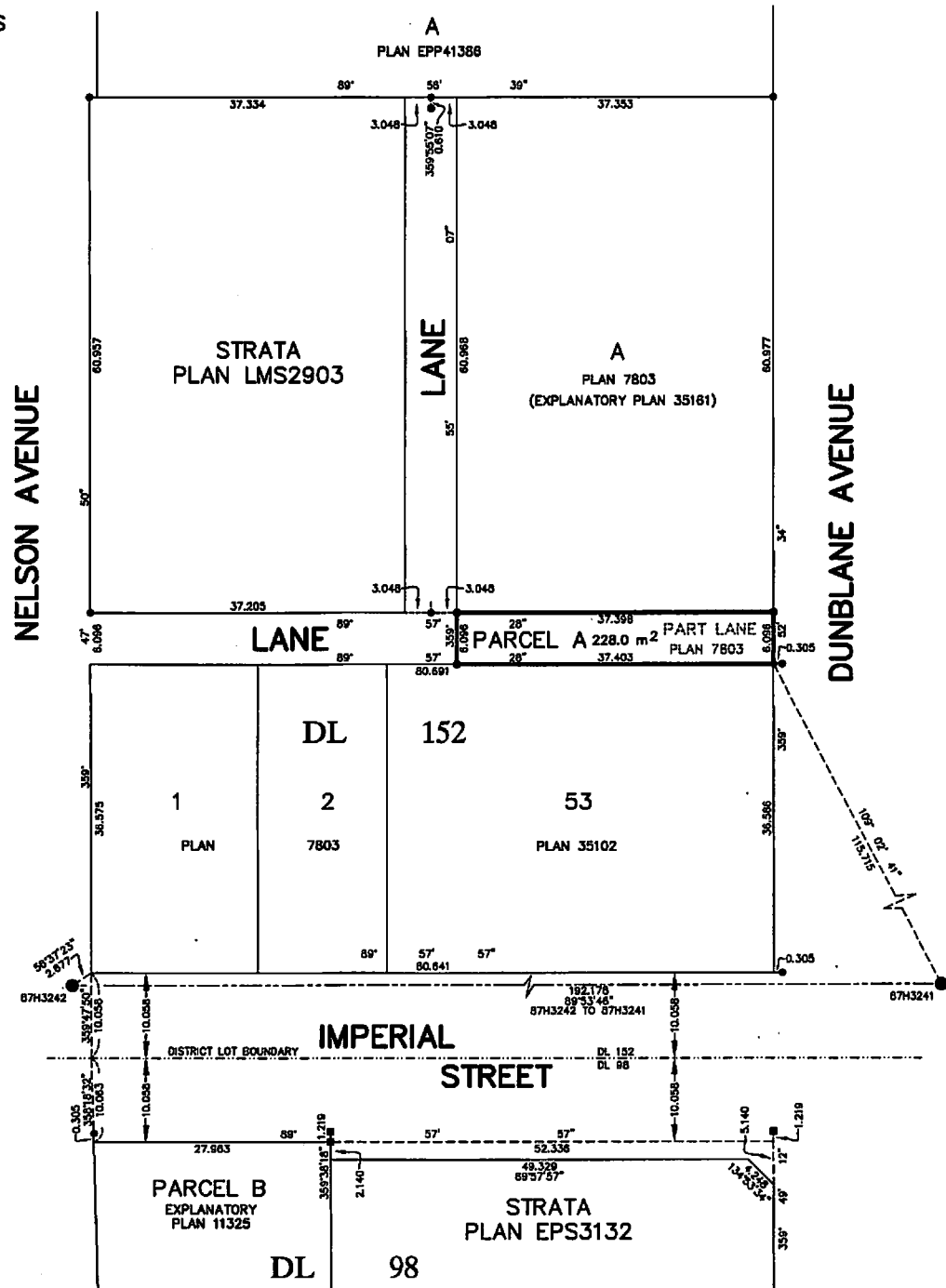
THE UTM COORDINATES AND ESTIMATED HORIZONTAL POSITIONAL ACCURACY ACHIEVED ARE DERIVED FROM THE MASQOT PUBLISHED COORDINATES AND STANDARD DEVIATIONS FOR GEODETIC CONTROL MONUMENTS 87H3241 AND 87H3242.

THIS PLAN SHOWS HORIZONTAL GROUND-LEVEL DISTANCES UNLESS OTHERWISE SPECIFIED. TO COMPUTE GRID DISTANCES, MULTIPLY GROUND-LEVEL DISTANCES BY THE AVERAGE COMBINED FACTOR OF 0.9995823 WHICH HAS BEEN DERIVED FROM GEODETIC CONTROL MONUMENTS 87H3241 AND 87H3242.



**LEGEND**

- ⊙ INDICATES CONTROL MONUMENT FOUND
  - INDICATES STANDARD IRON POST FOUND
  - INDICATES STANDARD IRON POST PLACED
  - INDICATES LEAD PLUG FOUND
- OFFSET POSTS AND PLUGS ARE ON THE PRODUCTION OF PROPERTY LINES UNLESS INDICATED OTHERWISE.



**MATSON PECK & TOPLISS**  
SURVEYORS & ENGINEERS  
#320 - 11120 HORSESHOE WAY  
RICHMOND, B.C. V7A 5H7  
PH: 604-270-9331  
FAX: 604-270-4137  
CADFILE: 17990-1-REF-2.DWG

NAD83 (CSRS) 4.0.0.BC.1.GVRD UTM ZONE 10 COORDINATES				
TABLET MARKING	NORTHING	EASTING	COMBINED FACTOR	ESTIMATED HORIZONTAL POSITIONAL ACCURACY
87H3241	5452137.444	500623.040	0.9995821	0.014
87H3242	5452137.098	500430.942	0.9995825	0.014

THIS PLAN LIES WITHIN  
THE GREATER VANCOUVER REGIONAL DISTRICT

THE FIELD SURVEY REPRESENTED BY THIS PLAN  
WAS COMPLETED ON THE 10th DAY OF APRIL, 2017  
WILLIAM P. WONG, BCLS (#897)

B-17-17990-1-REF-2