

**CITY OF BURNABY**

**BYLAW NO. 13743**

A BYLAW to close and remove the dedication of  
a certain portion of highway

WHEREAS pursuant to section 40 of the *Community Charter* and section 120 of the *Land Title Act* the Council may by bylaw close part of a highway to traffic and remove the dedication of that part of the highway;

AND WHEREAS the Council, before adopting this Bylaw, has caused the required statutory public notice of its intention to be given by advertisement;

AND WHEREAS the Council deems it expedient and in the public interest to stop up and close to traffic and remove the dedication of that portion of highway more particularly hereinafter described;

NOW THEREFORE the Council of the City of Burnaby ENACTS as follows:

1. This Bylaw may be cited as **BURNABY HIGHWAY CLOSURE BYLAW NO. 1, 2017.**
2. ALL AND SINGULAR that certain parcel or tract of land, situate, lying and being in the City of Burnaby, in the Province of British Columbia, more particularly known and described as all that portion of road in District Lot 119, Group 1, New Westminster District, dedicated by Plan 69931, containing 0.183ha (1,827.3m<sup>2</sup>) (hereinafter called "the closed portion of road") shown outlined on Reference Plan prepared by Mike E. Shaw, B.C.L.S., and certified in the Land Title Office under Number EPP63889, a copy of which is hereunto annexed (hereinafter called "the plan") is hereby closed to all types of traffic.

3. The dedication of the closed portion of road as highway is removed.

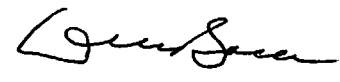
Read a first time this 24<sup>th</sup> day of April 2017

Read a second time this 24<sup>th</sup> day of April 2017

Read a third time this 24<sup>th</sup> day of April 2017

Reconsidered and adopted this 29<sup>th</sup> day of May 2017

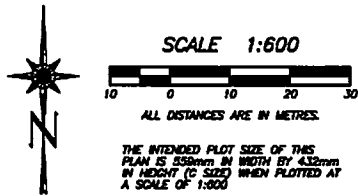
  
MAYOR

  
CLERK

**REFERENCE PLAN TO ACCOMPANY THE CITY OF BURNABY  
ROAD CLOSING AND REMOVAL OF ROAD DEDICATION BYLAW No. 13743  
OF A PORTION OF ROAD DEDICATED BY PLAN 69931,  
DISTRICT LOT 119, GROUP 1, NEW WESTMINSTER DISTRICT**

PLAN EPP63889

PURSUANT TO SECTION 120, L.T.A. AND SECTION 40, COMMUNITY CHARTER  
B.C.G.S. 92G.025

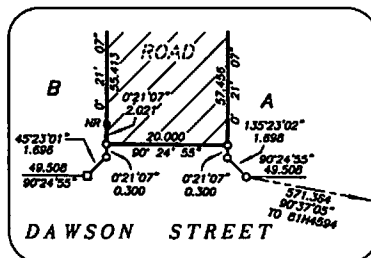


**INTEGRATED SURVEY AREA No. 25  
(BURNABY) NAD 83  
(CSRS) 4.0.0.BC.1.GVRD  
UTM ZONE 10**

THE UTM COORDINATES AND ESTIMATED HORIZONTAL POSITIONAL ACCURACY ACHIEVED HAVE BEEN DERIVED FROM THE BASCOPT PUBLISHED COORDINATES AND STANDARD DEVIATIONS FOR GEODETIC CONTROL MONUMENTS 77H6765 AND 81H4594

THE UTM COORDINATES SHOWN ARE FOR MAPPING PURPOSES ONLY

THIS PLAN SHOWS HORIZONTAL GROUND-LEVEL DISTANCES UNLESS OTHERWISE SPECIFIED, TO COMPUTE GRID DISTANCES, MULTIPLY GROUND-LEVEL DISTANCES BY THE AVERAGE CORRECTION FACTOR OF 0.999990 WHICH HAS BEEN DERIVED FROM GEODETIC CONTROL MONUMENTS 77H6765 AND 81H4594



**LEGEND**

GRID BEARINGS ARE DERIVED FROM OBSERVATIONS BETWEEN GEODETIC CONTROL MONUMENTS 77H6765 AND 81H4594

- - DENOTES CONTROL MONUMENT FOUND
- - DENOTES STANDARD IRON POST FOUND
- - DENOTES LEAD PLUG FOUND
- - DENOTES STANDARD IRON POST PLACED
- - DENOTES LEAD PLUG PLACED
- NR - DENOTES NO RECORD

▨ - DENOTES PORTION OF ROAD TO BE CLOSED

DATUM: NAD83 (CSRS) 4.0.0.BC.1.GVRD, UTM ZONE 10.				
CONTROL MONUMENT	NORTHING	EASTING	ESTIMATED HORIZONTAL POSITIONAL ACCURACY	COMBINED FACTOR
77H6765	5457291.829	498953.728	±0.01	0.9999902
81H4594	5456060.699	499603.350	±0.01	0.9999977

NOTE: FOR MAPPING PURPOSES ONLY.

THIS PLAN LIES WITHIN THE JURISDICTION OF THE APPROVING OFFICER FOR THE CITY OF BURNABY

THE FIELD SURVEY REPRESENTED BY THIS PLAN WAS COMPLETED ON THE 11th DAY OF APRIL 2017.  
MIKE E. SHAW, B.C.L.S. #381

BENNETT LAND SURVEYING LTD.  
B.C. & CANADA LAND SURVEYORS  
601-8547 122nd STREET,  
SURREY, B.C. V3R 5Y5  
PHONE: 604-582-0717

DRAWING # 30831-5 Revision #1  
FILE # 30831-5.R1  
DATE: APRIL 17, 2017

THIS PLAN LIES WITHIN THE  
GREATER VANCOUVER REGIONAL DISTRICT

