

**CITY OF BURNABY**

**BYLAW NO. 13699**

A BYLAW to close and remove the dedication of  
a certain portion of highway

WHEREAS pursuant to section 40 of the *Community Charter* and section 120 of the *Land Title Act* the Council may by bylaw close part of a highway to traffic and remove the dedication of that part of the highway;

AND WHEREAS the Council, before adopting this Bylaw, has caused the required statutory public notice of its intention to be given by advertisement;

AND WHEREAS the Council deems it expedient and in the public interest to stop up and close to traffic and remove the dedication of that portion of highway more particularly hereinafter described;

NOW THEREFORE the Council of the City of Burnaby ENACTS as follows:

1. This Bylaw may be cited as **BURNABY HIGHWAY CLOSURE BYLAW NO. 5, 2016.**
2. ALL AND SINGULAR that certain parcel or tract of land, situate, lying and being in the City of Burnaby, in the Province of British Columbia, more particularly known and described as all that portion of road in District Lot 91, Group 1, New Westminster District, dedicated by Plan 34482, containing 91.9m<sup>2</sup> (hereinafter called "the closed portion of road") shown as Parcel A on Reference Plan prepared by Brian W. Collins, B.C.L.S., and certified in the Land Title Office under Number EPP66293, a copy of which is hereunto annexed (hereinafter called "the plan") is hereby closed to all types of traffic.

3. The dedication of the closed portion of road as highway is removed.

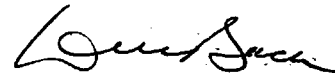
Read a first time this 12<sup>th</sup> day of December, 2016

Read a second time this 12<sup>th</sup> day of December, 2016

Read a third time this 12<sup>th</sup> day of December, 2016

Reconsidered and adopted this 23<sup>rd</sup> day of January, 2017

  
MAYOR

  
CLERK

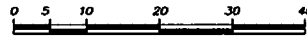
**REFERENCE PLAN TO ACCOMPANY THE CITY OF BURNABY BYLAW NO. 13699  
TO REMOVE THE ROAD DEDICATION OF A PORTION OF ROAD DEDICATED BY PLAN 34482  
DISTRICT LOT 91 GROUP 1 NEW WESTMINSTER DISTRICT**

PLAN EPP66293

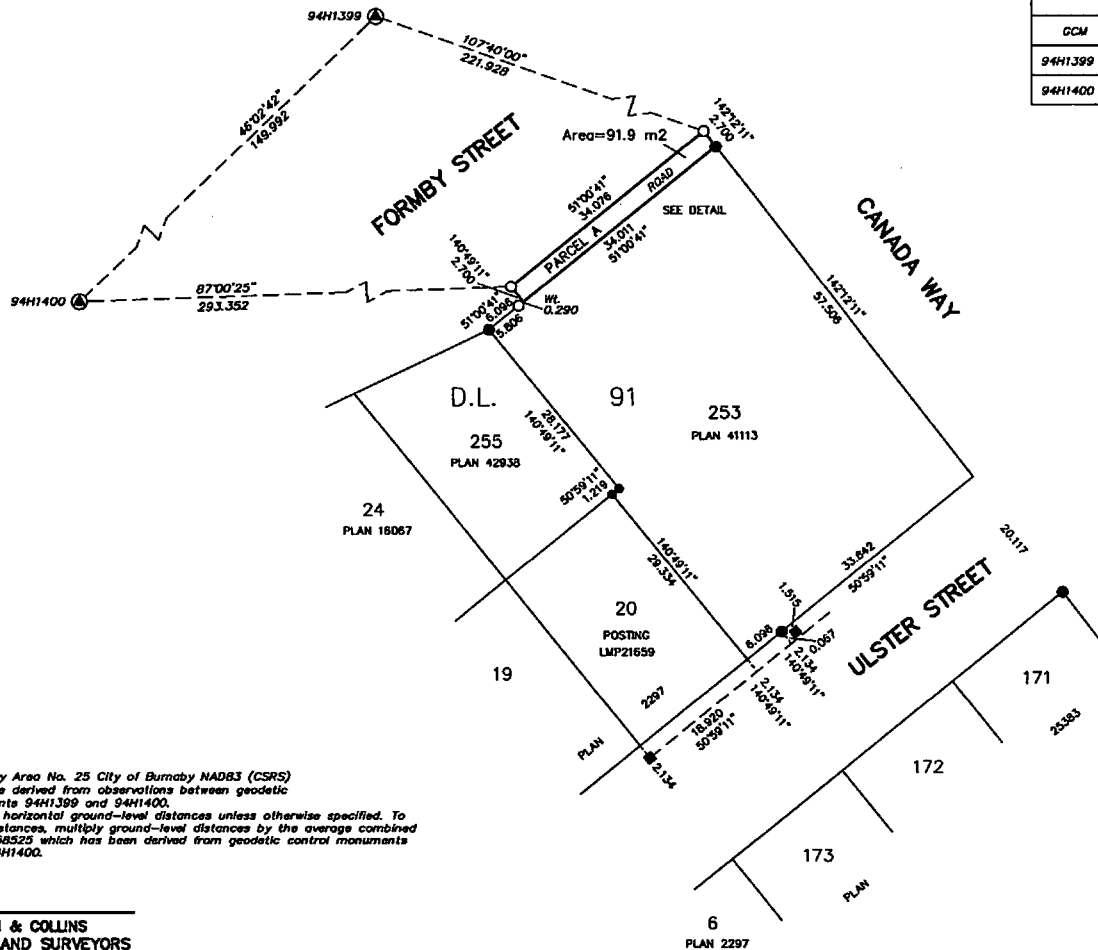
CITY OF BURNABY  
Pursuant to Section 120, Land Title Act and Section 40 of the Community Charter.

BCGS 92G.026

Scale 1 : 500



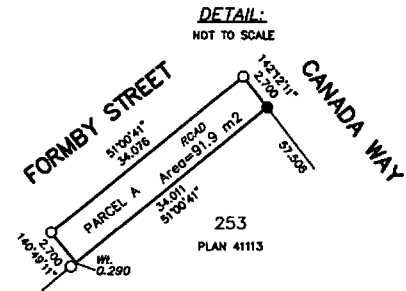
All distances are in metres and decimals unless otherwise indicated.  
The intended plot size of this plan is 560mm in width by 432mm in height  
(sheet size C) when plotted at a scale of 1:500



NAD83 (CSRS) 4.0.0.BC.1.GVRD UTM ZONE 10 COORDINATES				
GCM	NORTHING	EASTING	COMBINED FACTOR	HORIZONTAL POSITIONAL ACCURACY
94H1399	5452857.407	503732.228	0.9995853	0.01
94H1400	5452753.342	503.824.296	0.9995852	0.01

**LEGEND:**

- ⊙ DENOTES CONTROL MONUMENT FOUND.
- DENOTES OLD LEAD PLUG FOUND.
- DENOTES OLD IRON POST FOUND.
- DENOTES LEAD PLUG SET.
- DENOTES IRON POST SET.
- W. DENOTES WITNESS.



Integrated Survey Area No. 25 City of Burnaby NAD83 (CSRS)  
Grid bearings are derived from observations between geodetic control monuments 94H1399 and 94H1400.  
This plan shows horizontal ground-level distances unless otherwise specified. To compute grid distances, multiply ground-level distances by the average combined factor of 0.99958525 which has been derived from geodetic control monuments 94H1399 and 94H1400.

The UTM Coordinates and estimated horizontal positional accuracy achieved have been derived from conventional survey observations to Geodetic Control Monuments 94H1399 and 94H1400.

Note: This plan shows one or more witness posts which are not set on the true corner(s).

All distances are in metres and decimals thereof unless otherwise indicated.

This plan lies within the Greater Vancouver Regional District.

The field survey represented by this plan was completed on the 5th day of October 2016.  
Brian W. Collins B.C.L.S. 627

**LYON, FLYNN & COLLINS  
PROFESSIONAL LAND SURVEYORS**

#102 - 1537 WEST 8TH AVENUE,  
VANCOUVER, B.C. V6J 1T5  
PHONE: 604-737-8777 FAX: 604-737-8794  
FILE: 16261\BYLAW  
ACAD: S:\DWG\LFC\2016\16261