

CITY OF BURNABY

BYLAW NO. 13497

A BYLAW to close and remove the dedication of
a certain portion of highway

WHEREAS pursuant to section 40 of the *Community Charter* and section 120 of the *Land Title Act* the Council may by bylaw close part of a highway to traffic and remove the dedication of that part of the highway;

AND WHEREAS the Council, before adopting this Bylaw, has caused the required statutory public notice of its intention to be given by advertisement;

AND WHEREAS the Council deems it expedient and in the public interest to stop up and close to traffic and remove the dedication of that portion of highway more particularly hereinafter described;

NOW THEREFORE the Council of the City of Burnaby ENACTS as follows:

1. This Bylaw may be cited as **BURNABY HIGHWAY CLOSURE BYLAW NO. 4, 2015.**
2. ALL AND SINGULAR that certain parcel or tract of land, situate, lying and being in the City of Burnaby, in the Province of British Columbia, more particularly known and described as all that portion of road in District Lot 69, Group 1, New Westminster District, dedicated by Plan 1321 containing 155.6m² (hereinafter called "the closed portion of road") shown outlined on Reference Plan prepared by Jesse Morin, B.C.L.S., and certified in the Land Title Office under Number EPP53622, a copy of which is hereunto annexed (hereinafter called "the plan") is hereby closed to all types of traffic.

3. The dedication of the closed portion of road as highway is removed.

Read a first time this 20th day of July 2015

Read a second time this 20th day of July 2015

Read a third time this 20th day of July 2015

Reconsidered and adopted this 24th day of August 2015


MAYOR



CLERK



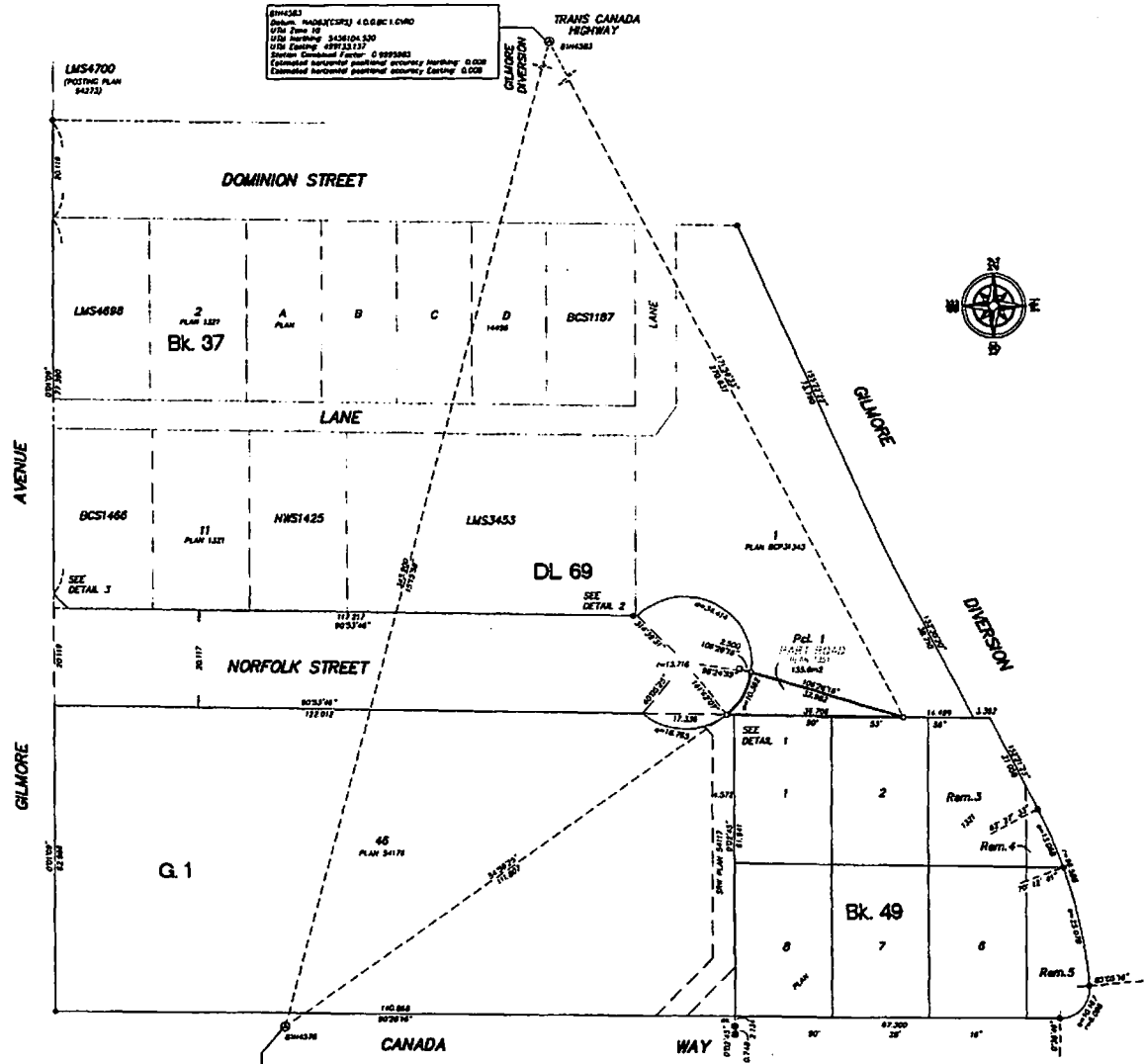
**REFERENCE PLAN TO ACCOMPANY CITY OF BURNABY
BYLAW NUMBER 13497 TO REMOVE THE ROAD DEDICATION
OF PART OF ROAD DEDICATED ON PLAN 1321
DISTRICT LOT 69 GROUP 1 NEW WESTMINSTER DISTRICT
PURSUANT TO SECTION 120 OF THE LAND TITLE ACT
PURSUANT TO SECTION 40 OF THE COMMUNITY CHARTER
DOCS 926.025**

0 25 50
SCALE 1 : 500 DISTANCES ARE IN METRES
THE REDUCED PLAN SCALE OF THIS PLAN IS 854 mm
at 80MM BY 300 mm. IN HEIGHT (D SIZE) WHEN
PLOTTED AT A SCALE OF 1:500

INTEGRATED SURVEY AREA No. 25, BURNABY, MADD3 (CPRS)
ORD BEARINGS ARE DERIVED FROM OBSERVATIONS BETWEEN CONTROL
MONUMENTS, PINNACLES AND BENCHES
THIS PLAN SHOWS HORIZONTAL GROUND-LEVEL DISTANCES UNLESS
OTHERWISE SPECIFIED TO COMPUTE ORD DISTANCES. ALL HORIZONTAL
GROUND-LEVEL DISTANCES BY THE AVERAGE CORRECTION FACTOR OF
0.999982 WHICH HAS BEEN DERIVED FROM CONTROL MONUMENTS
BENCHES AND BENCHES

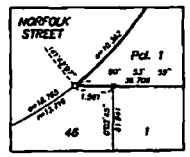
- LEGEND**
FOUND PLACES
- ⊙ DENOTES CONTROL MONUMENT
 - ⊙ DENOTES LEAD PLUG
 - ⊙ DENOTES IRON POST
 - ⊙ DENOTES WIRELESS
 - ⊙ DENOTES SQUARE METRES
 - ⊙ DENOTES HECTARES
 - ⊙ DENOTES PAVED

NOTE: THIS PLAN SHOWS ONE OR MORE WIRELESS POSTS
WHICH ARE NOT SET ON THE WALK CORNER(S)

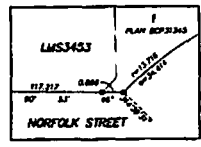


8194383
Datum: NAD83(CSRS) 4 0 0 0 0 0 1 0 0 0
UTM Zone: 18
UTM Northing: 545104.530
UTM Easting: 499233.137
Scale Correction Factor: 0.999982
Estimated horizontal positional accuracy Northing: 0.028
Estimated horizontal positional accuracy Easting: 0.028

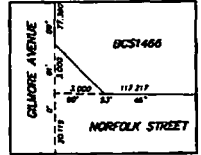
8194378
Datum: NAD83(CSRS) 4 0 0 0 0 0 1 0 0 0
UTM Zone: 18
UTM Northing: 545177.809
UTM Easting: 499243.624
Scale Correction Factor: 0.999982
Estimated horizontal positional accuracy Northing: 0.028
Estimated horizontal positional accuracy Easting: 0.028



DETAIL 1 NOT TO SCALE



DETAIL 2 NOT TO SCALE



DETAIL 3 NOT TO SCALE

THE FIELD SURVEY REPRESENTED BY THIS PLAN WAS
COMPLETED ON THE 25th DAY OF JULY, 2025
JESSE MOORE, B.S. (REG)
CPRP 176362
THIS PLAN LIES WITHIN THE GREATER VANCOUVER REGIONAL DISTRICT

4 - 11020 8400 Ave
Burnaby, BC V5H 2S4
Tel: 604-293-8811
Fax: 604-293-8811
4214
Dwg: 4214-071