

CITY OF BURNABY

BYLAW NO. 13462

**A BYLAW to close and remove the dedication of
certain portions of highway**

WHEREAS pursuant to section 40 of the *Community Charter* and section 120 of the *Land Title Act* the Council may by bylaw close part of a highway to traffic and remove the dedication of that part of the highway;

AND WHEREAS the Council, before adopting this Bylaw, has caused the required statutory public notice of its intention to be given by advertisement;

AND WHEREAS the Council deems it expedient and in the public interest to stop up and close to traffic and remove the dedication of those portions of highway more particularly hereinafter described;

NOW THEREFORE the Council of the City of Burnaby ENACTS as follows:

1. This Bylaw may be cited as **BURNABY HIGHWAY CLOSURE BYLAW NO. 2, 2015.**
2. ALL AND SINGULAR those certain parcels or tracts of land, situate, lying and being in the City of Burnaby, in the Province of British Columbia, more particularly known and described as all those portions of road in Block 10 District Lot 6, Group 1, New Westminster District:
 - (a) dedicated as road by Plan 17130 containing 869.9m²,
 - (b) dedicated as road by Plan 17450 containing 1.0m², and
 - (c) dedicated as road by Plan 18558 containing 136.9m²,

(hereinafter called "the closed portions of road") shown outlined on Reference Plan prepared by Grant Butler, B.C.L.S., and certified in the Land Title Office under Number EPP42022, a copy of which is hereunto annexed, are hereby closed to all types of traffic.

3. The dedication of the closed portions of road as highway is removed.

Read a first time this 30th day of March 2015

Read a second time this 30th day of March 2015

Read a third time this 30th day of March 2015

Reconsidered and adopted this 11th day of May 2015


MAYOR



CLERK

**REFERENCE PLAN TO ACCOMPANY CITY OF BURNABY
ROAD CLOSING AND ABANDONMENT BYLAW No.13462
COVERING PORTIONS OF ROAD SHOWN DEDICATED ON
PLANS 17130, 17450 AND 18358 ALL OF BLOCK 10
DISTRICT LOT 6 GROUP 1 NEW WESTMINSTER DISTRICT**

PLAN EPP42022

PURSUANT TO SECTION 123 OF THE LAND TITLE ACT
AND SECTION 40 OF THE COMMUNITY CHARTER

BCCS 820,023

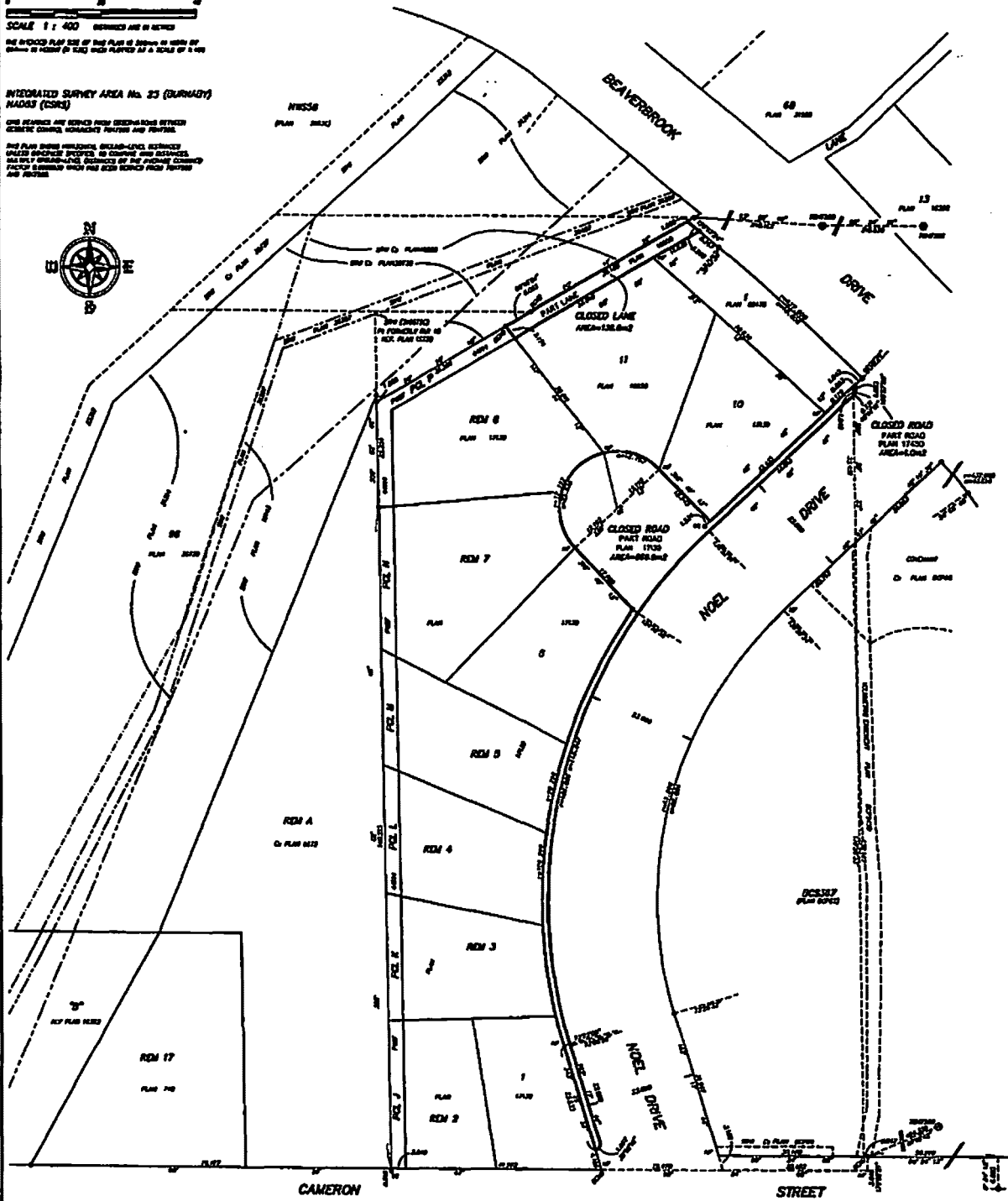
SCALE 1 : 400 DIMENSIONS ARE IN METRES

THE ENCLOSED PLAN SIZE OF THIS PLAN IS 290mm BY 430mm BY MEANS OF WHICH IT HAS BEEN PLACED AT A SCALE OF 1:400

INTEGRATED SURVEY AREA No. 23 (BURNABY)
MADRS (CSRS)

THIS PLAN SHOWS PORTIONS OF THE ROAD SHOWN DEDICATED ON PLANS 17130, 17450 AND 18358 ALL OF BLOCK 10 DISTRICT LOT 6 GROUP 1 NEW WESTMINSTER DISTRICT

THIS PLAN SHOWS PORTIONS OF THE ROAD SHOWN DEDICATED ON PLANS 17130, 17450 AND 18358 ALL OF BLOCK 10 DISTRICT LOT 6 GROUP 1 NEW WESTMINSTER DISTRICT



LEGEND

- BOUNDARY CORNER APPROXIMATE
- BOUNDARY CORNER EXACT
- BOUNDARY CORNER APPROXIMATE
- BOUNDARY CORNER EXACT
- BOUNDARY CORNER APPROXIMATE
- BOUNDARY CORNER EXACT
- BOUNDARY CORNER APPROXIMATE
- BOUNDARY CORNER EXACT
- BOUNDARY CORNER APPROXIMATE
- BOUNDARY CORNER EXACT
- BOUNDARY CORNER APPROXIMATE
- BOUNDARY CORNER EXACT
- BOUNDARY CORNER APPROXIMATE
- BOUNDARY CORNER EXACT
- BOUNDARY CORNER APPROXIMATE
- BOUNDARY CORNER EXACT

BOOK OF REFERENCE	
DESCRIPTION	AREA
PART PLAN 17130	865.9 m ²
PART PLAN 17450	1.0 m ²
PART PLAN 18358	135.9 m ²
TOTAL	1,002.8 m ²

THIS ROAD SURVEY IS PREPARED BY THIS PLAN AND
CORRECTED BY THE CITY OF BURNABY AND
OTHER PLANES OF THE CITY OF BURNABY

13 SOUTH 76
GISSENER
 SURVEYORS
 100 - 125th Street, Burnaby
 B.C. V5C 3G7
 Tel: 493-5551
 Fax: 493-5552
 Web: www.gissener.com