

CITY OF BURNABY

BYLAW NO. 13249

A BYLAW to close and remove the dedication of
a certain portion of highway

WHEREAS pursuant to section 40 of the *Community Charter* and section 120 of the *Land Title Act* the Council may by bylaw close part of a highway to traffic and remove the dedication of that part of the highway;

AND WHEREAS the Council, before adopting this Bylaw, has caused the required statutory public notice of its intention to be given by advertisement;

AND WHEREAS the Council deems it expedient and in the public interest to stop up and close to traffic and remove the dedication of that portion of highway more particularly hereinafter described;

NOW THEREFORE the Council of the City of Burnaby ENACTS as follows:

1. This Bylaw may be cited as **BURNABY HIGHWAY CLOSURE BYLAW NO. 5, 2013.**
2. ALL AND SINGULAR that certain parcel or tract of land, situate, lying and being in the City of Burnaby, in the Province of British Columbia, more particularly known and described as all that portion of road in District Lot 152, Group 1, New Westminster District, dedicated by Plan 32590 containing 41.9m² (hereinafter called the "closed portion of road") shown outlined on Reference Plan prepared by Jesse Morin, B.C.L.S., and deposited in the Land Title Office under Number EPP30559, a copy of which is hereunto annexed (hereinafter called the "plan") is hereby closed to all types of traffic.

3. The dedication of the closed portion of road as highway is removed.

Read a first time this 7th day of October 2013

Read a second time this 7th day of October 2013

Read a third time this 7th day of October 2013

Reconsidered and adopted this 18th day of November 2013


MAYOR


CLERK

REFERENCE PLAN TO ACCOMPANY THE CITY OF BURNABY BYLAW NUMBER 13249
 TO REMOVE THE ROAD DEDICATION OF PART ROAD DEDICATED BY PLAN 32590
 DISTRICT LOT 152 GROUP 1 NEW WESTMINSTER DISTRICT

BCGS 926.026
 PURSUANT TO SECTION 120 OF THE LAND TITLE ACT
 AND SECTION 40 OF THE COMMUNITY CHARTER



SCALE 1 : 400 DISTANCES ARE IN METRES
 THE INTENDED PLOT SCALE OF THIS PLAN IS 1:614 mm
 IN WIDTH BY 560 mm IN HEIGHT (D SIZE) WHEN
 PLOTTED AT A SCALE OF 1:400.

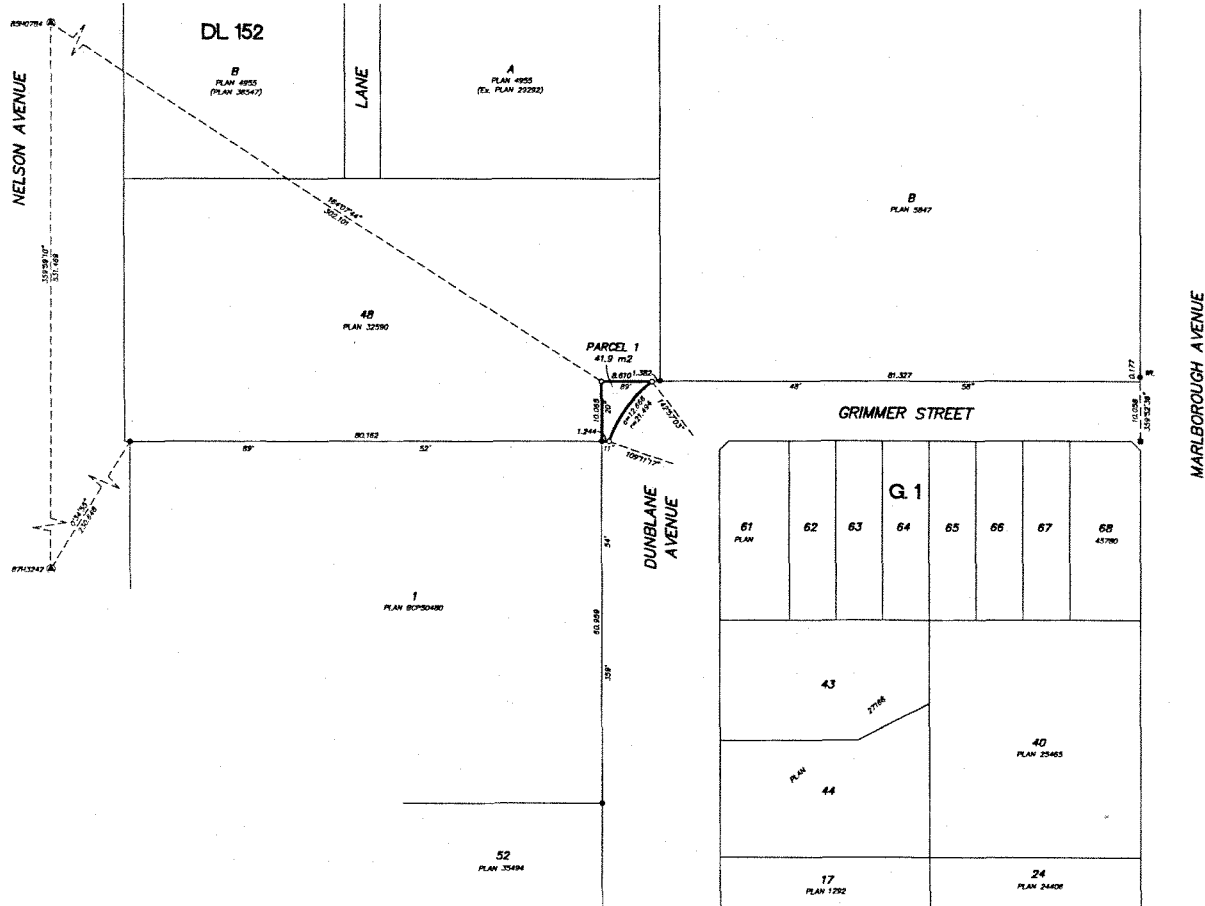
INTEGRATED SURVEY AREA No. 25, (BURNABY, MADDJ) (CSRS)
 CRD READINGS ARE DERIVED FROM OBSERVATIONS BETWEEN GEODETIC
 CONTROL MONUMENTS 8540784 AND 8743242.

THIS PLAN SHOWS HORIZONTAL GROUND-LEVEL DISTANCES UNLESS
 OTHERWISE SPECIFIED. TO COMPUTE CURVE DISTANCES, MULTIPLY
 GROUND-LEVEL DISTANCES BY THE AVERAGE CORRECTION FACTOR OF
 0.99998 WHICH HAS BEEN DERIVED FROM GEODETIC CONTROL
 MONUMENTS 8540784 AND 8743242.

LEGEND

- FOUND PLACED
- ⊕ DENOTES CONTROL MONUMENT
 - DENOTES LEAD PLUG
 - ⊙ DENOTES IRON PEG
 - m=2 DENOTES SQUARE METRES

NOTE: THIS PLAN SHOWS ONE OR MORE WITNESS POINTS
 WHICH ARE NOT SET ON THE TRUE CORNERS.



THE FIELD SURVEY REPRESENTED BY THIS PLAN WAS
 COMPLETED ON THE 25th DAY OF SEPTEMBER, 2015
 JESSE MORIN, P.E.S. (P.S.)
 LIC# 115227

THIS PLAN LIES WITHIN THE GREATER VANCOUVER REGIONAL DISTRICT