

**CITY OF BURNABY**

**BYLAW NO. 13240**

A BYLAW to close and remove the dedication of  
certain portions of highway

WHEREAS pursuant to section 40 of the *Community Charter*, SBC 2003 and section 120 of the *Land Title Act* the Council may by bylaw close part of a highway to traffic and remove the dedication of that part of the highway;

AND WHEREAS the Council, before adopting this Bylaw, has caused the required statutory public notice of its intention to be given by advertisement;

AND WHEREAS the Council deems it expedient and in the public interest to stop up and close to traffic and remove the dedication of those portions of highway more particularly hereinafter described;

NOW THEREFORE the Council of the City of Burnaby ENACTS as follows:

1. This Bylaw may be cited as **BURNABY HIGHWAY CLOSURE BYLAW NO. 4, 2013.**

2. ALL AND SINGULAR that certain parcel or tract of land, situate, lying and being in the City of Burnaby, in the Province of British Columbia, more particularly known and described as all that portion of road in District Lot 98, Group 1, New Westminster District dedicated as road by Plan 8184 containing 260.8m<sup>2</sup> (hereinafter called "the closed portion of road") shown outlined and described as Parcel A on Reference Plan prepared by William P. Wong, B.C.L.S., and deposited in the Land Title Office under Number EPP34488, a copy of which is hereunto annexed, is hereby closed to all types of traffic.

3. The dedication of the closed portion of road as highway is removed.

Read a first time this 30<sup>th</sup> day of September 2013

Read a second time this 30<sup>th</sup> day of September 2013

Read a third time this 30<sup>th</sup> day of September 2013

Reconsidered and adopted this 4<sup>th</sup> day of November 2013

  
MAYOR

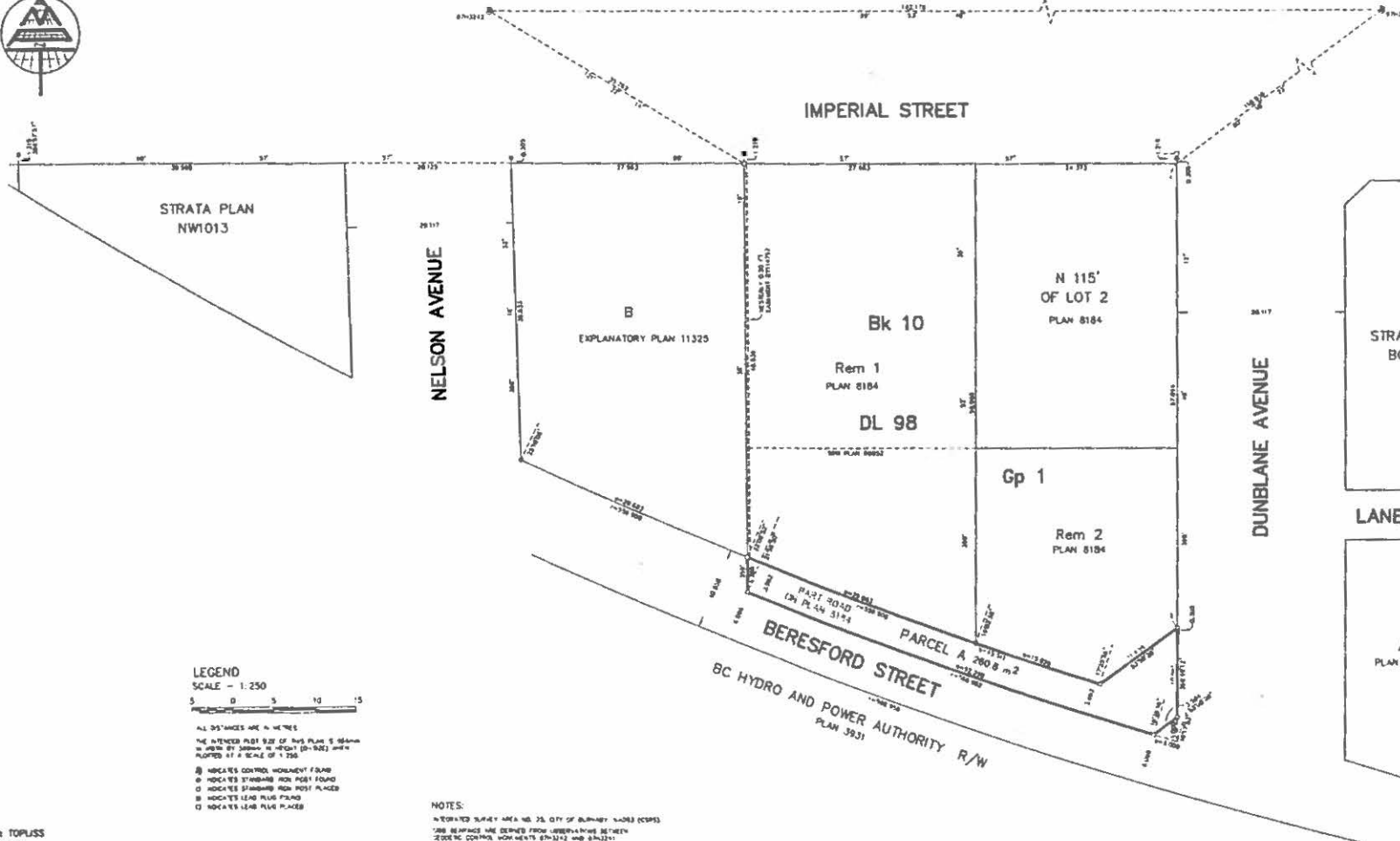
  
CLERK

REFERENCE PLAN TO ACCOMPANY CITY OF BURNABY ROAD CLOSING  
AND REMOVAL OF ROAD DEDICATION BYLAW No. 13240 OF A PORTION OF  
ROAD DEDICATED ON PLAN 8184 BLOCK 10 DISTRICT LOT 98 GROUP 1  
NEW WESTMINSTER DISTRICT

PLAN EPP34488

BCGS 92G.026

PURSUANT TO SECTION 120 OF THE LAND TITLE ACT AND SECTION 40 OF THE COMMUNITY CHARTER



LEGEND  
SCALE - 1:250

- ALL DISTANCES ARE IN METRES
- THE INTENDED POST SIZE OF THIS PLAN IS 66MM
- IN ACCORD WITH SECTION 120 OF THE LAND TITLE ACT AND SECTION 40 OF THE COMMUNITY CHARTER
- PLOTTED AT A SCALE OF 1:250
- INDICATES CONTROL MONUMENT FOUND
- INDICATES STANDARD MONUMENT FOUND
- ◇ INDICATES STANDARD MONUMENT PLACED
- INDICATES LEAD PILE FOUND
- ◻ INDICATES LEAD PILE PLACED

NOTES:  
1. THE PLANNED SURVEY AREA IS THE CITY OF BURNABY (CDPS)  
2. THE DISTANCES ARE DERIVED FROM OBSERVATIONS BETWEEN  
ZODIAC CONTROL MONUMENTS 879342 AND 879321  
3. THIS PLAN SHOWS HORIZONTAL GROUND-LEVEL DISTANCES UNLESS  
OTHERWISE SPECIFIED TO CHANGE AND DISTANCES MULTIPLY  
BY THE GRADE CORRECTION FACTOR OF 0.999971 WHICH HAS BEEN DERIVED FROM ZODIAC DATA  
MONUMENTS 879342 AND 879321

MATSON PECK & TOPLISS  
SURVEYORS & ENGINEERS  
1100 HENDERSON BLVD  
RICHMOND, B.C. V7A 3K7  
PH: 604-270-1137  
FAX: 604-270-1137  
LAPCPL: 14676-002-RC-009 B/C

THIS PLAN LIES WITH THE  
CITY OF BURNABY RECORDS DEPT.

THIS PLAN LIES WITH THE  
CITY OF BURNABY RECORDS DEPT.  
DATE: 14 SEP 2011