

**CITY OF BURNABY**

**BYLAW NO.13156**

A BYLAW to amend Bylaw No. 4742, being  
Burnaby Zoning Bylaw 1965

WHEREAS application for rezoning has been made to the Council;

AND WHEREAS the Council has held a public hearing thereon after duly giving notice of the time and place of such hearing as prescribed by Sections 892 and 893 of the *Local Government Act*, R.S.B.C. 1996;

NOW THEREFORE the Council of the City of Burnaby ENACTS as follows:

1. This Bylaw may be cited as **BURNABY ZONING BYLAW 1965, AMENDMENT BYLAW NO. 49, 2012.**
2. The Map (hereinafter called "Map 'A'"), attached to and forming an integral part of Bylaw No. 4742, being "Burnaby Zoning Bylaw 1965", and designated as the Official Zoning Map of the City of Burnaby, is hereby amended according to the Map (hereinafter called "Map 'B'"), marginally numbered R.Z. 3904 annexed to this Bylaw, and in accordance with the explanatory legend, notations, references and boundaries designated, described, delimited and specified in particularity shown upon said Map 'B'; and the various boundaries and districts shown upon said Map 'B' respectively are an amendment of and in substitution for the respective districts, designated and marked on said Map 'A' insofar as the same are changed, modified or varied thereby, and the said Map 'A' shall be deemed to be and is hereby declared to be amended accordingly and the said Map 'B' is hereby declared to be and shall form an integral part of said Map 'A', as if originally incorporated therein and shall be interpreted accordingly.

3. The Comprehensive Development Plan entitled "EASTLAKE CAMPUS" prepared by CHIP BARRETT ARCHITECT and on file in the office of the Director Planning and Building, is deemed to be attached to and form part of this Bylaw and any development on the lands rezoned by this Bylaw shall be in conformity with the said Comprehensive Development Plan.

Read a first time this 26<sup>th</sup> day of November 2012

Read a second time this 14<sup>th</sup> day of January 2013

Read a third time this 24<sup>th</sup> day of June 2013

Reconsidered and adopted this 13<sup>th</sup> day of January 2014

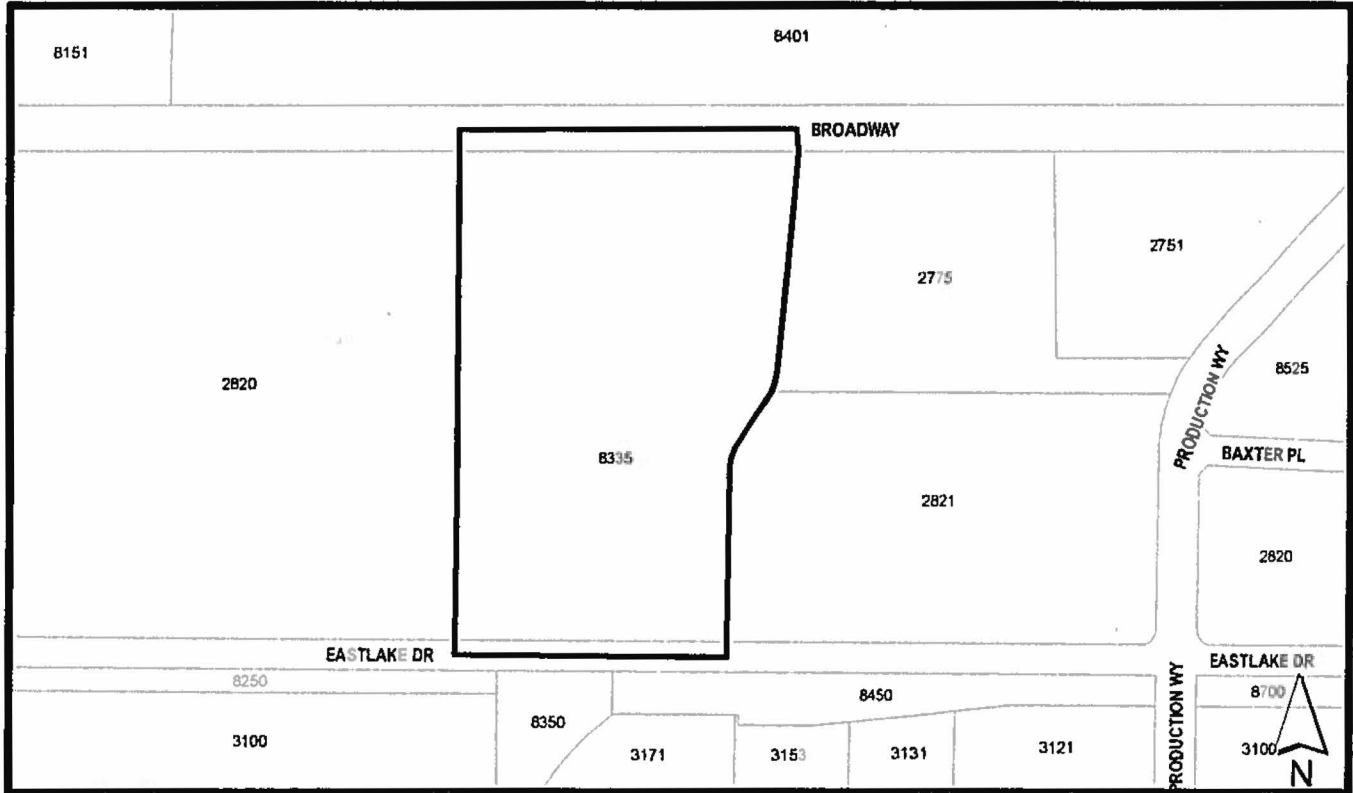
  
MAYOR

  
CLERK

BYLAW NUMBER 13156 BEING A BYLAW TO AMEND BYLAW NUMBER 4742 BEING BURNABY ZONING BYLAW 1965

**REZ. 08-21**


LEGAL: Lot 2, DL 57, Group 1, NWD Plan LMP 25484



THE AREA(S) SHOWN ABOVE OUTLINED IN BLACK (——) IS (ARE) REZONED

FROM: M3 Heavy Industrial District

TO: CD Comprehensive Development District (based on M5 and M5'r' Light Industrial District, B1 Suburban Office District, and Lake City Business Centre guidelines, and in accordance with the development plan entitled, "Eastlake Campus" prepared by Chip Barrett Architect)

	PLANNING AND BUILDING DEPARTMENT	
DATE: NOV 06 2012	<p style="text-align: center;"><b>OFFICIAL ZONING MAP</b></p> <p style="text-align: right;">Map "B" 3904 No. REZ.</p>	
SCALE: 1:5,000		
DRAWN BY: AY		