

**CITY OF BURNABY**

**BYLAW NO. 13131**

A BYLAW to close and remove the dedication of  
a certain portion of highway

WHEREAS pursuant to section 40 of the *Community Charter* and section 120 of the *Land Title Act* the Council may by bylaw close part of a highway to traffic and remove the dedication of that part of the highway;

AND WHEREAS the Council, before adopting this Bylaw, has caused the required statutory public notice of its intention to be given by advertisement;

AND WHEREAS the Council deems it expedient and in the public interest to stop up and close to traffic and remove the dedication of that portion of highway more particularly hereinafter described;

NOW THEREFORE the Council of the City of Burnaby ENACTS as follows:

1. This Bylaw may be cited as **BURNABY HIGHWAY CLOSURE BYLAW NO. 7, 2012.**
2. ALL AND SINGULAR that certain parcel or tract of land, situate, lying and being in the City of Burnaby, in the Province of British Columbia, more particularly known and described as all that portion of road in District Lot 166A, Group 1, New Westminster District, dedicated by Plan 5736 containing 0.516ha (hereinafter called "the closed portion of road") shown outlined on Reference Plan prepared by Gary Sundvick, B.C.L.S., and deposited in the Land Title Office under Number BCP \_\_\_\_\_, a copy of which is hereunto annexed (hereinafter called "the plan") is hereby closed to all types of traffic.

3. The dedication of the closed portion of road as highway is removed.

Read a first time this 27<sup>th</sup> day of August 2012

Read a second time this 27<sup>th</sup> day of August 2012

Read a third time this 27<sup>th</sup> day of August 2012

Reconsidered and adopted this 15<sup>th</sup> day of October 2012

  
MAYOR

  
ACTING CITY CLERK



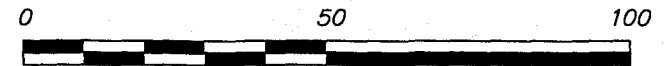
REFERENCE PLAN TO ACCOMPANY CITY OF BURNABY  
ROAD CLOSING BYLAW No. \_\_\_\_\_ OF PART  
ROAD DEDICATED ON PLAN 5736  
DISTRICT LOT 166A GROUP 1  
NEW WESTMINSTER DISTRICT

PURSUANT TO SECTION 120 OF THE LAND TITLE ACT  
PURSUANT TO SECTION 40 OF THE COMMUNITY CHARTER  
BCGS 92G.016

PLAN BCP

DEPOSITED IN THE LAND TITLE OFFICE  
AT NEW WESTMINSTER, B.C.,  
THIS \_\_\_\_\_ DAY OF \_\_\_\_\_, 2012.

REGISTRAR



SCALE 1 : 1250 DISTANCES ARE IN METRES  
THE INTENDED PLOT SCALE OF THIS PLAN IS 560 mm  
IN WIDTH BY 432 mm IN HEIGHT (C SIZE) WHEN  
PLOTTED AT A SCALE OF 1:1250.

LEGEND

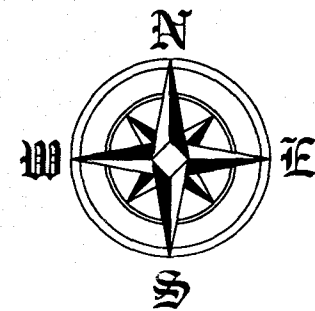
THIS PLAN DOES NOT LIE WITHIN INTEGRATED SURVEY AREA No. 25

THIS PLAN SHOWS GROUND LEVEL MEASURED DISTANCES.  
PRIOR TO COMPUTATION OF U.T.M. COORDINATES  
MULTIPLY BY COMBINED FACTOR 0.999602452.

GRID BEARINGS ARE DERIVED FROM REFERENCE PLAN BCP47256.

FOUND PLACED

- DENOTES LEAD PLUG
- ○ DENOTES IRON POST
- ha DENOTES HECTARES



CITY OF BURNABY

MAYOR \_\_\_\_\_

CLERK \_\_\_\_\_

WITNESS AS TO BOTH SIGNATURES

Name \_\_\_\_\_

ADDRESS \_\_\_\_\_

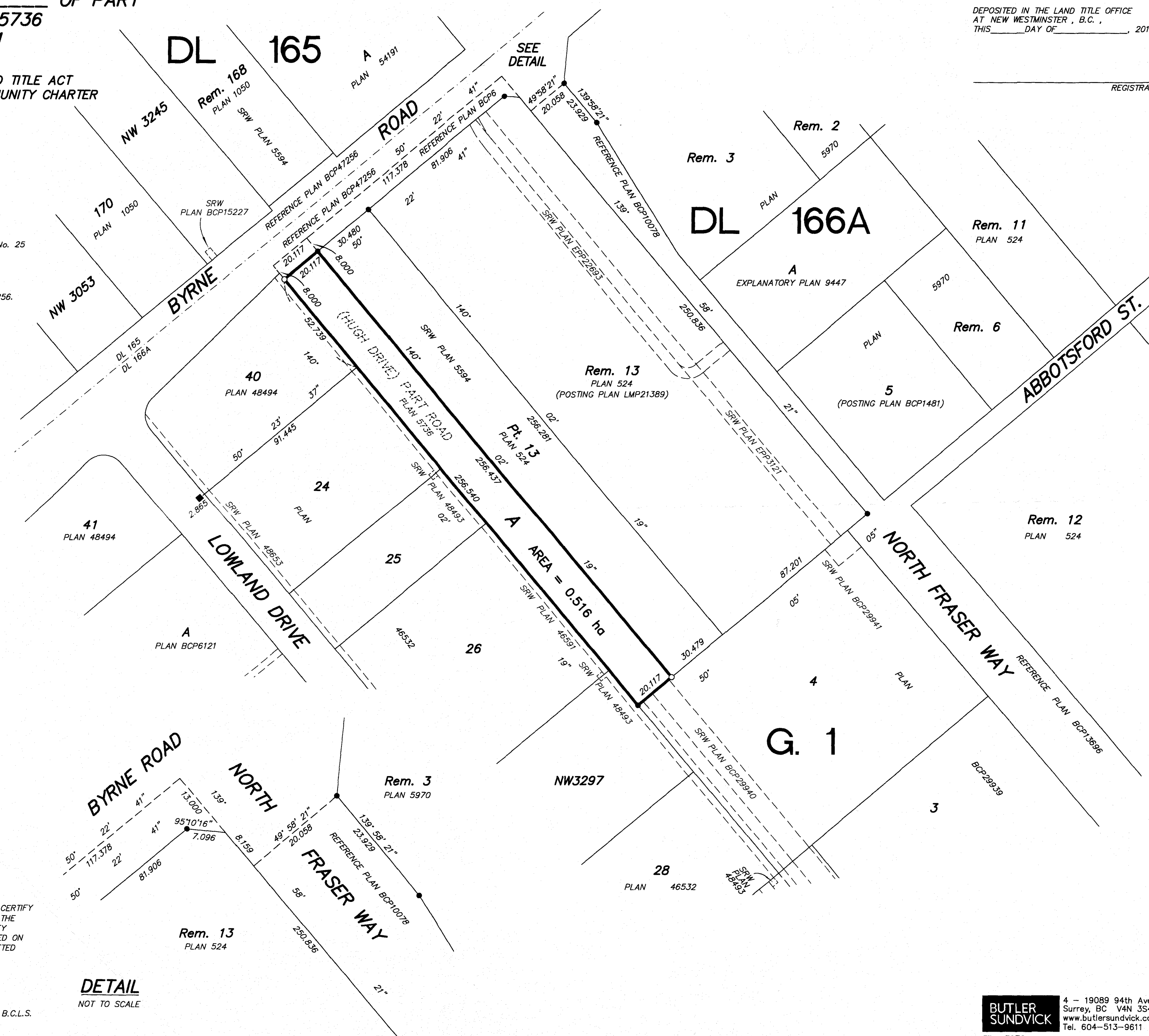
OCCUPATION \_\_\_\_\_

I, GARY SUNDVICK, A BRITISH COLUMBIA LAND SURVEYOR, CERTIFY  
THAT I WAS PRESENT AT AND PERSONALLY SUPERINTENDED THE  
SURVEY REPRESENTED BY THIS PLAN, AND THAT THE SURVEY  
AND PLAN ARE CORRECT. THE FIELD SURVEY WAS COMPLETED ON  
THE 8th DAY OF AUGUST, 2012. THE PLAN WAS COMPLETED  
AND CHECKED, AND THE CHECKLIST FILED UNDER #139381,  
ON THE 9th DAY OF AUGUST, 2012.

B.C.L.S.

DETAIL  
NOT TO SCALE

THIS PLAN LIES WITHIN THE GREATER VANCOUVER REGIONAL DISTRICT



BUTLER  
SUNDVICK  
4 - 19089 94th Ave  
Surrey, BC V4N 3S4  
www.butlersundvick.ca  
Tel. 604-513-9611  
File: 3972  
Dwg: 3972-RD1