

**CITY OF BURNABY**

**BYLAW NO. 13085**

A BYLAW to close and remove the dedication of  
certain portions of highway

WHEREAS pursuant to section 40 of the *Community Charter*, SBC 2003 and section 120 of the *Land Title Act* the Council may by bylaw close part of a highway to traffic and remove the dedication of that part of the highway;

AND WHEREAS the Council, before adopting this Bylaw, has caused the required statutory public notice of its intention to be given by advertisement;

AND WHEREAS the Council deems it expedient and in the public interest to stop up and close to traffic and remove the dedication of those portions of highway more particularly hereinafter described;

NOW THEREFORE the Council of the City of Burnaby ENACTS as follows:

1. This Bylaw may be cited as **BURNABY HIGHWAY CLOSURE BYLAW NO. 3, 2012.**
2. ALL AND SINGULAR those certain parcels or tracts of land, situate, lying and being in the City of Burnaby, in the Province of British Columbia, more particularly known and described as all those portions of road in District Lot 119, Group 1, New Westminster District:
  - (a) dedicated as lane by Plan 2855 containing 0.107 ha,
  - (b) dedicated as road by Plan 2855 containing 0.280 ha.

(hereinafter called "the closed portions of road") shown outlined and hatched on Reference Plan prepared by Mike E. Shaw, B.C.L.S., and deposited in the Land Title Office under Number BCP \_\_\_\_\_, a copy of which is hereunto annexed, are hereby closed to all types of traffic.

3. The dedication of the closed portions of road as highway is removed.

Read a first time this 7<sup>th</sup> day of May 2012

Read a second time this 7<sup>th</sup> day of May 2012

Read a third time this 7<sup>th</sup> day of May 2012

Reconsidered and adopted this 18<sup>th</sup> day of June 2012

  
MAYOR

  
A/CLERK



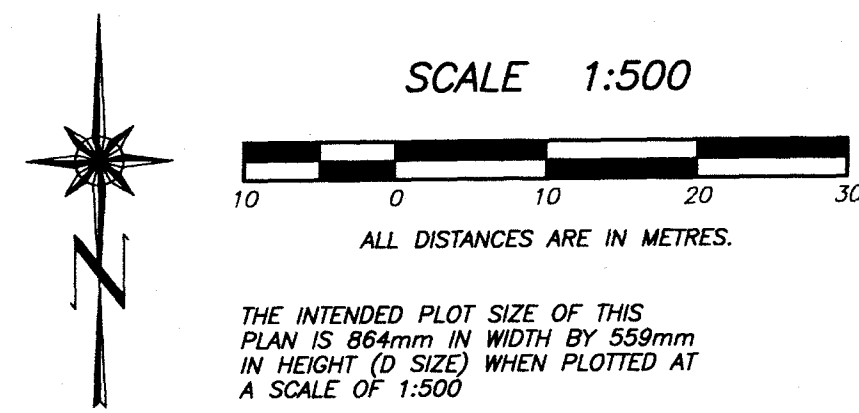
**REFERENCE PLAN TO ACCOMPANY THE CITY OF BURNABY ROAD CLOSING AND REMOVAL OF ROAD DEDICATION BYLAW No. OF A PORTION OF ROAD DEDICATED BY PLAN 2855, BLOCKS 6 AND 7, DISTRICT LOT 119, GROUP 1, N.W.D.**

PURSUANT TO SECTION 120, L.T.A. AND SECTION 40, COMMUNITY CHARTER B.C.G.S. 92G.025

PLAN BCP

DEPOSITED IN THE LAND TITLE OFFICE AT NEW WESTMINSTER, B.C. THIS DAY OF

DEPUTY REGISTRAR



**INTEGRATED SURVEY AREA No. 25 (BURNABY) NAD-83 (CSRS)**

THIS PLAN SHOWS HORIZONTAL GROUND-LEVEL DISTANCES UNLESS OTHERWISE SPECIFIED. TO COMPUTE GRID DISTANCES, MULTIPLY GROUND-LEVEL DISTANCES BY THE AVERAGE COMBINED FACTOR OF 0.9995981 WHICH HAS BEEN DERIVED FROM CONTROL MONUMENTS 81H4593 AND 81H4594.

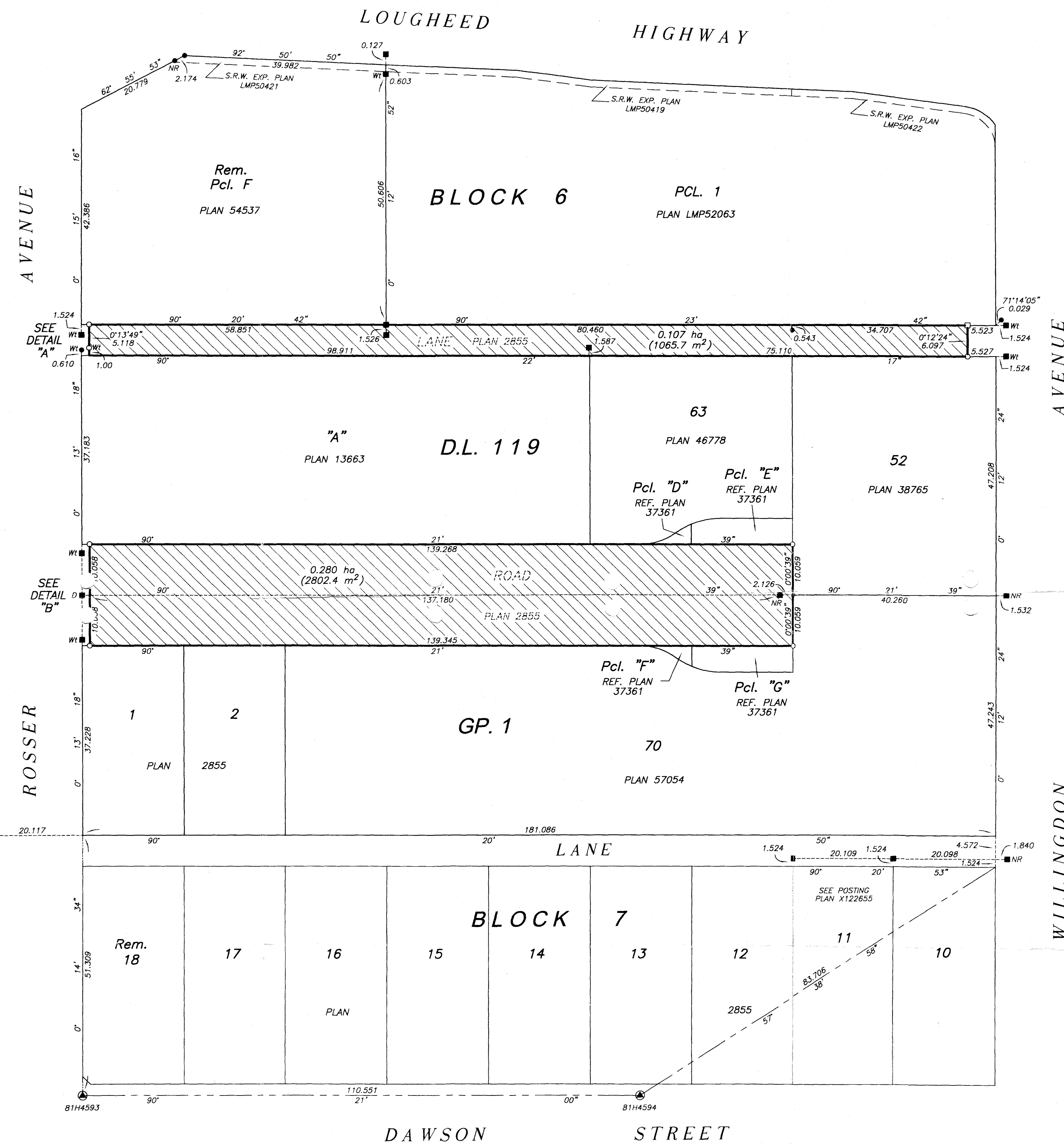
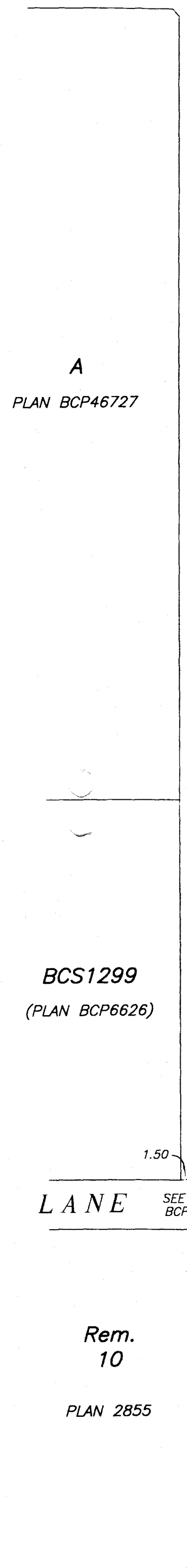
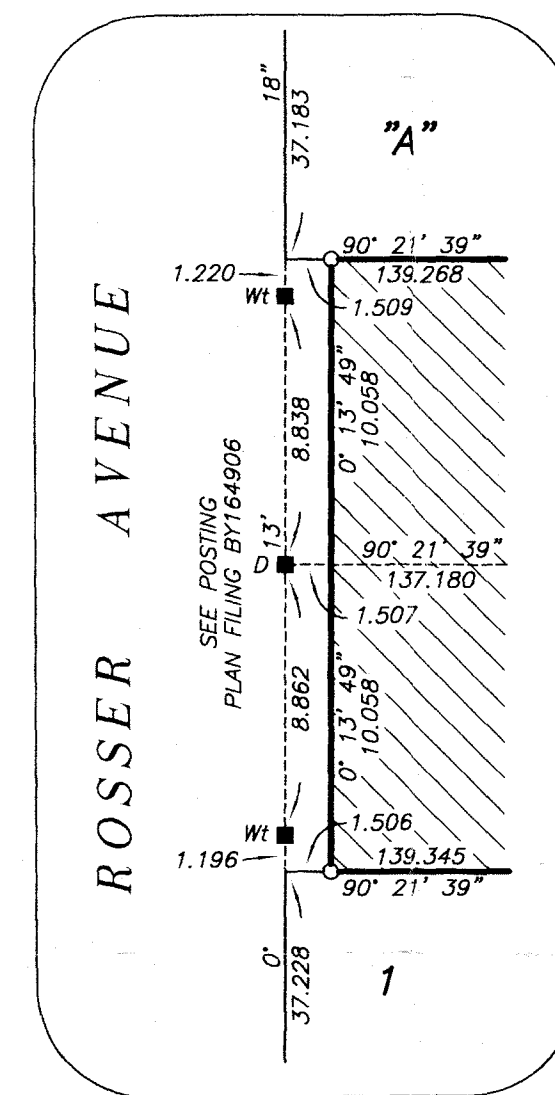
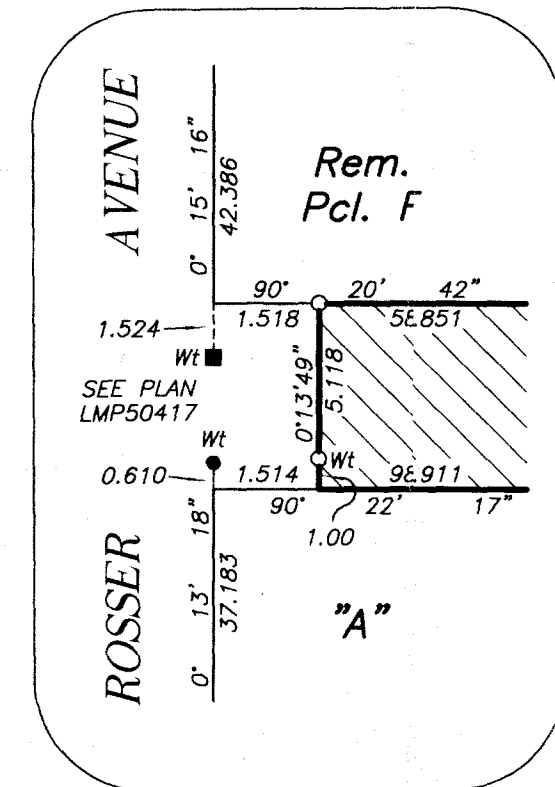
**LEGEND**

GRID BEARINGS ARE DERIVED FROM OBSERVATIONS BETWEEN CONTROL MONUMENTS 81H4593 AND 81H4594

- - DENOTES CONTROL MONUMENT FOUND
- - DENOTES STANDARD IRON POST FOUND
- - DENOTES LEAD PLUG FOUND
- - DENOTES STANDARD IRON POST PLACED
- ◻ - DENOTES LEAD PLUG PLACED
- NR - DENOTES NO RECORD
- D - DENOTES DESTROYED
- ▨ - DENOTES PORTION OF ROAD TO BE CLOSED

THIS PLAN SHOWS ONE OR MORE WITNESS POSTS WHICH ARE NOT SET ON THE TRUE "RNER(S)" AND ARE SET ALONG THE PRODUCTION OF THE PROPERTY BOUNDARY UNLESS OTHERWISE NOTED.

BOOK OF REFERENCE (ROAD TO BE CLOSED)	
DESCRIPTION	AREA
ROAD, PLAN 2855	0.280 ha
LANE, PLAN 2855	0.107 ha
TOTAL	0.387 ha



I, MIKE E. SHAW, A BRITISH COLUMBIA LAND SURVEYOR, CERTIFY THAT I WAS PRESENT AT AND PERSONALLY SUPERINTENDED THE SURVEY REPRESENTED BY THIS PLAN, AND THAT THE SURVEY AND PLAN ARE CORRECT. THE FIELD SURVEY WAS COMPLETED ON THE 5th DAY OF APRIL, 2012. THE PLAN WAS COMPLETED AND CHECKED, AND THE CHECKLIST FILED UNDER # 134941, ON THE 12th DAY OF APRIL, 2012.

*Mike E. Shaw* B.C.L.S.

BENNETT LAND SURVEYING LTD.  
B.C. & CANADA LAND SURVEYORS  
#201-9547 152nd STREET,  
SURREY, B.C. V3R 5Y5  
PHONE: 604-582-0717

DRAWING # 30607-9  
FILE # 30607-9  
DATE: APRIL 13, 2012.

THIS PLAN LIES WITHIN THE GREATER VANCOUVER REGIONAL DISTRICT

THE CITY OF BURNABY

MAYOR

CLERK

WITNESS AS TO BOTH SIGNATURES

OCCUPATION OF WITNESS

ADDRESS OF WITNESS