

**CITY OF BURNABY**

**BYLAW NO. 13082**

A BYLAW to close and remove the dedication of  
a certain portion of highway

WHEREAS pursuant to section 40 of the *Community Charter* and section 120 of the *Land Title Act* the Council may by bylaw close part of a highway to traffic and remove the dedication of that part of the highway;

AND WHEREAS the Council, before adopting this Bylaw, has caused the required statutory public notice of its intention to be given by advertisement;

AND WHEREAS the Council deems it expedient and in the public interest to stop up and close to traffic and remove the dedication of that portion of highway more particularly hereinafter described;

NOW THEREFORE the Council of the City of Burnaby ENACTS as follows:

1. This Bylaw may be cited as **BURNABY HIGHWAY CLOSURE BYLAW NO. 2, 2012.**
2. ALL AND SINGULAR that certain parcel or tract of land, situate, lying and being in the City of Burnaby, in the Province of British Columbia, more particularly known and described as all that portion of road in District Lot 92, Group 1, New Westminster District, dedicated by Plan 23444 containing 404.4m<sup>2</sup> (hereinafter called "the closed portion of road") shown outlined and described as Parcel 1 on Reference Plan prepared by Terence D. Connolly, B.C.L.S., and deposited in the Land Title Office under Number BCP \_\_\_\_\_, a copy of which is hereunto annexed (hereinafter called "the plan") is hereby closed to all types of traffic.

3. The dedication of the closed portion of road as highway is removed.

Read a first time this 2<sup>nd</sup> day of April 2012

Read a second time this 2<sup>nd</sup> day of April 2012

Read a third time 2<sup>nd</sup> day of April 2012

Reconsidered and adopted this 14<sup>th</sup> day of May 2012

  
MAYOR

  
A/CLERK

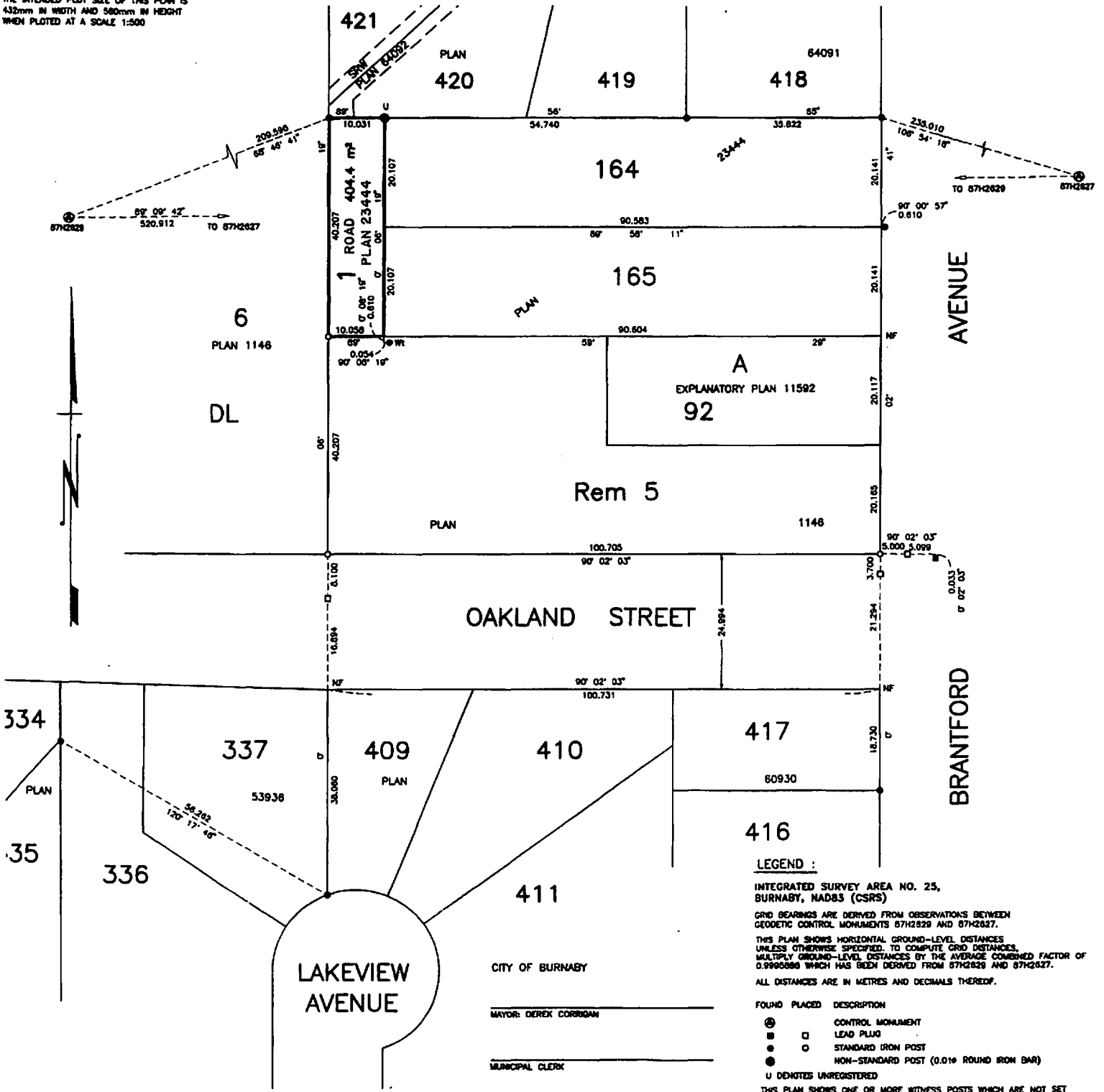
REFERENCE PLAN TO ACCOMPANY OF BURNABY  
 ROAD CLOSURE AND DEDICATION REMOVAL BYLAW NUMBER \_\_\_\_\_  
 OF ROAD SHOWN DEDICATED ON PLAN 23444,  
 DISTRICT LOT 92, GROUP 1, NEW WESTMINSTER DISTRICT  
 PURSUANT TO SECTION 120 OF THE LAND TITLE ACT AND  
 SECTION 40 OF THE COMMUNITY CHARTER  
 BCGS 92G.026

PLAN BCP

DEPOSITED IN THE LAND TITLE OFFICE  
 AT NEW WESTMINSTER, B.C. THIS  
 DAY OF \_\_\_\_\_, 2012

REGISTRAR

10m 5m 10m 30m  
 THE INTENDED PLOT SIZE OF THIS PLAN IS  
 432mm IN WIDTH AND 580mm IN HEIGHT  
 WHEN PLOTTED AT A SCALE 1:500



LEGEND :

INTEGRATED SURVEY AREA NO. 25,  
 BURNABY, NAD83 (CSRS)  
 GRID BEARINGS ARE DERIVED FROM OBSERVATIONS BETWEEN  
 GEODETIC CONTROL MONUMENTS 87H2829 AND 87H2827.  
 THIS PLAN SHOWS HORIZONTAL GROUND-LEVEL DISTANCES  
 UNLESS OTHERWISE SPECIFIED. TO COMPUTE GRID DISTANCES,  
 MULTIPLY GROUND-LEVEL DISTANCES BY THE AVERAGE CORRECTION FACTOR OF  
 0.9999886 WHICH HAS BEEN DERIVED FROM 87H2829 AND 87H2827.  
 ALL DISTANCES ARE IN METRES AND DECIMALS THEREOF.

- FOUND PLACED DESCRIPTION
- ⊙ CONTROL MONUMENT
  - □ LEAD PLUG
  - ○ STANDARD IRON POST
  - ○ NON-STANDARD POST (0.016" ROUND IRON BAR)
  - U DENOTES UNREGISTERED

THIS PLAN SHOWS ONE OR MORE WITNESS POSTS WHICH ARE NOT SET  
 ON THE TRUE CORNERS.  
 THIS PLAN LIES WITHIN THE GREATER VANCOUVER REGIONAL DISTRICT

I, TERENCE D. CONNOLLY, A BRITISH COLUMBIA LAND SURVEYOR, CERTIFY  
 THAT I WAS PRESENT AT AND PERSONALLY SUPERVISED THE SURVEY  
 REPRESENTED BY THIS PLAN, AND THAT THE SURVEY AND PLAN ARE CORRECT.  
 THE FIELD SURVEY WAS COMPLETED ON THE 9th DAY OF MARCH, 2012.  
 THE PLAN WAS COMPLETED AND CHECKED, AND THE CHECKLIST FILED  
 UNDER #134022, ON THE 15th DAY OF MARCH, 2012.

CITY OF BURNABY

MAYOR: DEREK CORRIGAN \_\_\_\_\_

MUNICIPAL CLERK \_\_\_\_\_

WITNESS AS TO (BOTH) ABOVE SIGNATURE(S)  
 SIGN AND PRINT NAME CLEARLY

NAME \_\_\_\_\_

ADDRESS \_\_\_\_\_

OCCUPATION \_\_\_\_\_

*Terence D. Connolly*  
 B.C.L.S.

UNDERHILL & UNDERHILL  
 PROFESSIONAL LAND SURVEYORS  
 10A-3430 BRIGHTON AVENUE  
 RICHMOND, B.C. V6X 3M4  
 T. (604) 732-3384