

**CITY OF BURNABY**

**BYLAW NO. 13041**

A BYLAW to close and remove the dedication of  
a certain portion of highway

WHEREAS pursuant to section 40 of the *Community Charter* and section 120 of the *Land Title Act* the Council may by bylaw close part of a highway to traffic and remove the dedication of that part of the highway;

AND WHEREAS the Council, before adopting this Bylaw, has caused the required statutory public notice of its intention to be given by advertisement;

AND WHEREAS the Council deems it expedient and in the public interest to stop up and close to traffic and remove the dedication of that portion of highway more particularly hereinafter described;

NOW THEREFORE the Council of the City of Burnaby ENACTS as follows:

1. This Bylaw may be cited as **BURNABY HIGHWAY CLOSURE BYLAW NO. 1, 2012.**
2. ALL AND SINGULAR that certain parcel or tract of land, situate, lying and being in the City of Burnaby, in the Province of British Columbia, more particularly known and described as all that portion of road in District Lot 59, Group 1, New Westminster District, dedicated by Plan 52579 containing 128.8m<sup>2</sup> (hereinafter called "the closed portion of road") shown outlined and described as Parcel A on Reference Plan prepared by G.N. Holme, B.C.L.S., and deposited in the Land Title Office under Number BCP\_\_\_\_\_, a copy of which is hereunto annexed (hereinafter called "the plan") is hereby closed to all types of traffic.

3. The dedication of the closed portion of road as highway is removed.

Read a first time this 16<sup>th</sup> day of January 2012

Read a second time this 16<sup>th</sup> day of January 2012

Read a third time this 16<sup>th</sup> day of January 2012

Reconsidered and adopted this 5th day of March 2012

  
MAYOR

  
A/CLERK

REFERENCE PLAN TO ACCOMPANY THE CITY OF BURNABY BYLAW NO. \_\_\_\_\_ TO REMOVE THE ROAD DEDICATION OF PART OF ROAD DEDICATED BY PLAN 52579, DL 59, Gp 1, NWD Pursuant to Section 120, Land Title Act, and Section 40 of The Community Charter.

PLAN BCP

Deposited in the Land Title Office at New Westminster, B.C., this day of \_\_\_\_\_, 2011.

Scale 1 : 500



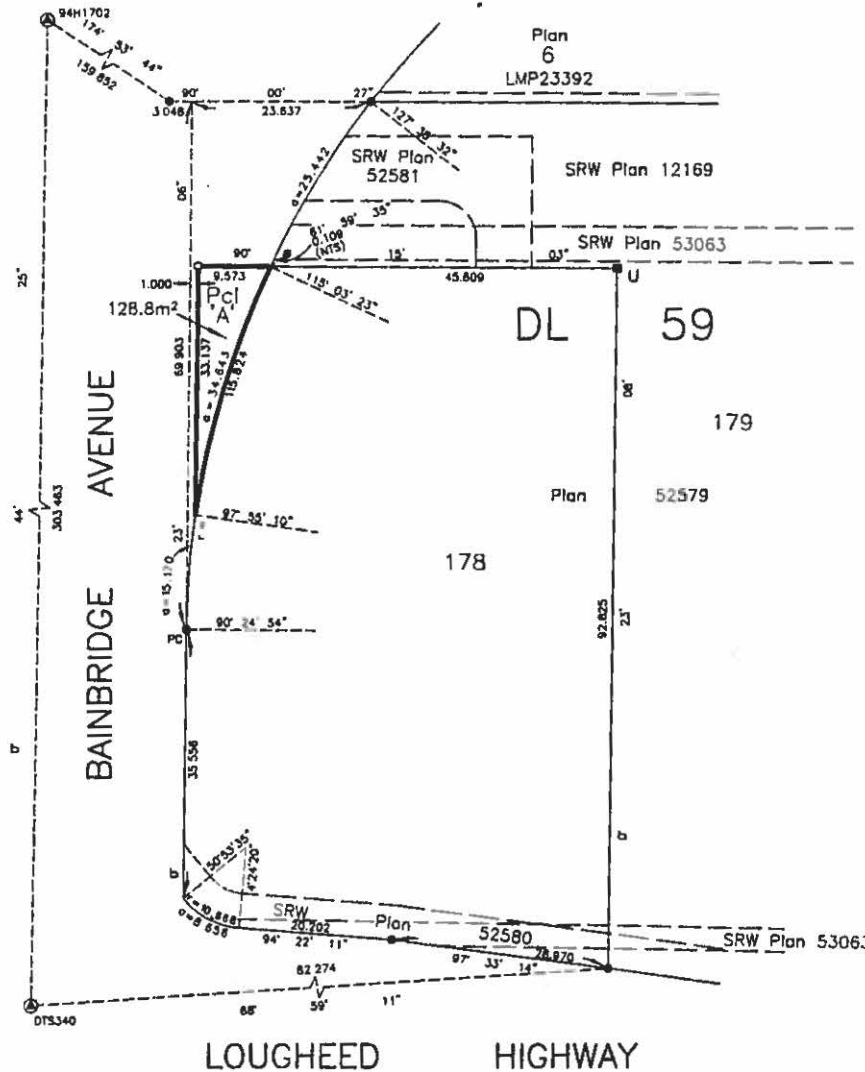
B.C.G.S. 92G.025

The intended plot size of this plan is 432mm in width by 580mm in height (C size) when plotted at a scale of 1:500.

Integrated Survey Area No. 25, Burnaby, NAD'83 (CSRS). All distances are in metres. Grid bearings are derived from observations between geodetic control monuments 94H1702 and DTS340. This plan shows horizontal ground-level distances except where otherwise noted. To compute grid distances, multiply ground-level distances by combined factor of 0.9995965.

Legend:

- ⊙ denotes control monument found.
- denotes standard iron post found.
- denotes lead plug found.
- denotes standard iron post placed.
- U denotes unregistered.
- NTS denotes not to scale.



The City of Burnaby

Authorized Signatory \_\_\_\_\_ (Printed Name)

Authorized Signatory \_\_\_\_\_ (Printed Name)

Witness as to above Signatures \_\_\_\_\_ (Printed Name)

Address \_\_\_\_\_

Occupation \_\_\_\_\_

I, Gary N. Holme, a British Columbia Land Surveyor of Burnaby, in British Columbia, certify that I was present at and personally superintended the survey represented by this plan and that the survey and plan are correct. The field survey was completed on the 11<sup>th</sup> day of Jan., 2011. The plan was completed and checked, and the checklist filed under ECP#118879 on the 12<sup>th</sup> day of Jan., 2011.

*G. N. Holme*  
B.C.L.S.