

CITY OF BURNABY

BYLAW NO. 13033

A BYLAW to close and remove the dedication of
a certain portion of highway

WHEREAS pursuant to section 40 of the *Community Charter* and section 120 of the *Land Title Act* the Council may by bylaw close part of a highway to traffic and remove the dedication of that part of the highway;

AND WHEREAS the Council, before adopting this Bylaw, has caused the required statutory public notice of its intention to be given by advertisement;

AND WHEREAS the Council deems it expedient and in the public interest to stop up and close to traffic and remove the dedication of that portion of highway more particularly hereinafter described;

NOW THEREFORE the Council of the City of Burnaby ENACTS as follows:

1. This Bylaw may be cited as **BURNABY HIGHWAY CLOSURE BYLAW NO. 7, 2011.**
2. ALL AND SINGULAR that certain parcel or tract of land, situate, lying and being in the City of Burnaby, in the Province of British Columbia, more particularly known and described as all that portion of road in Block 28, District Lot 152, Group 1, New Westminster District, dedicated by Plan 8063 containing 371.6m² (hereinafter called "the closed portion of road") shown outlined and described as Parcel 1 on Reference Plan prepared by Jesse Morin, B.C.L.S., and deposited in the Land Title Office under Number BCP _____, a copy of which is hereunto annexed (hereinafter called "the plan") is hereby closed to all types of traffic.

3. The dedication of the closed portion of road as highway is removed.

Read a first time this 12th day of December 2011

Read a second time this 12th day of December 2011

Read a third time this 12th day of December 2011

Reconsidered and adopted this 23rd day of January 2012


MAYOR


A/CLERK

REFERENCE PLAN TO ACCOMPANY CITY OF BURNABY HIGHWAY
DEDICATION CANCELLATION BYLAW NUMBER _____
OF PART OF ROAD DEDICATED ON PLAN 8063
BLOCK 28 DISTRICT LOT 152 GROUP 1
NEW WESTMINSTER DISTRICT

PLAN BCP _____

DEPOSITED IN THE LAND TITLE OFFICE
AT NEW WESTMINSTER, B.C.,
THIS _____ DAY OF _____ 2011



REGISTRAR

0 10 20

SCALE 1 : 750 DISTANCES ARE IN METRES

THE INTENDED PLOT SCALE OF THIS PLAN IS 432 mm
BY 610 mm BY 580 mm BY HEIGHT (C 322) WHEN
PLOTTED AT A SCALE OF 1:750.

INTEGRATED SURVEY AREA No. 25 (BURNABY)
NAD83 (CSRS)

THIS PLAN SHOWS HORIZONTAL GROUND LEVEL DISTANCES EXCEPT
WHERE OTHERWISE NOTED TO COMPUTE GRID DISTANCES, MULTIPLY
GROUND LEVEL DISTANCES BY COMBINED FACTOR, 0.999329

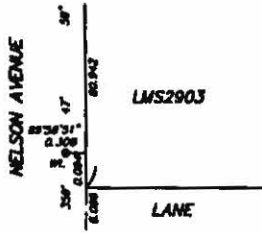
LEGEND

GRID BEARINGS ARE DERIVED FROM OBSERVATIONS BETWEEN
CONTROL MONUMENTS 8340784 AND 8743242

FOUND PLACED

- ⊙ DENOTES CONTROL MONUMENT
- ⊕ DENOTES LEAD PLUG
- ⊠ DENOTES IRON POST
- m2 DENOTES SQUARE METRES

NOTE: THIS PLAN SHOWS ONE OR MORE WITNESS POSTS
WHICH ARE NOT SET ON THE TRUE CORNERS.



CITY OF BURNABY

MAYOR _____

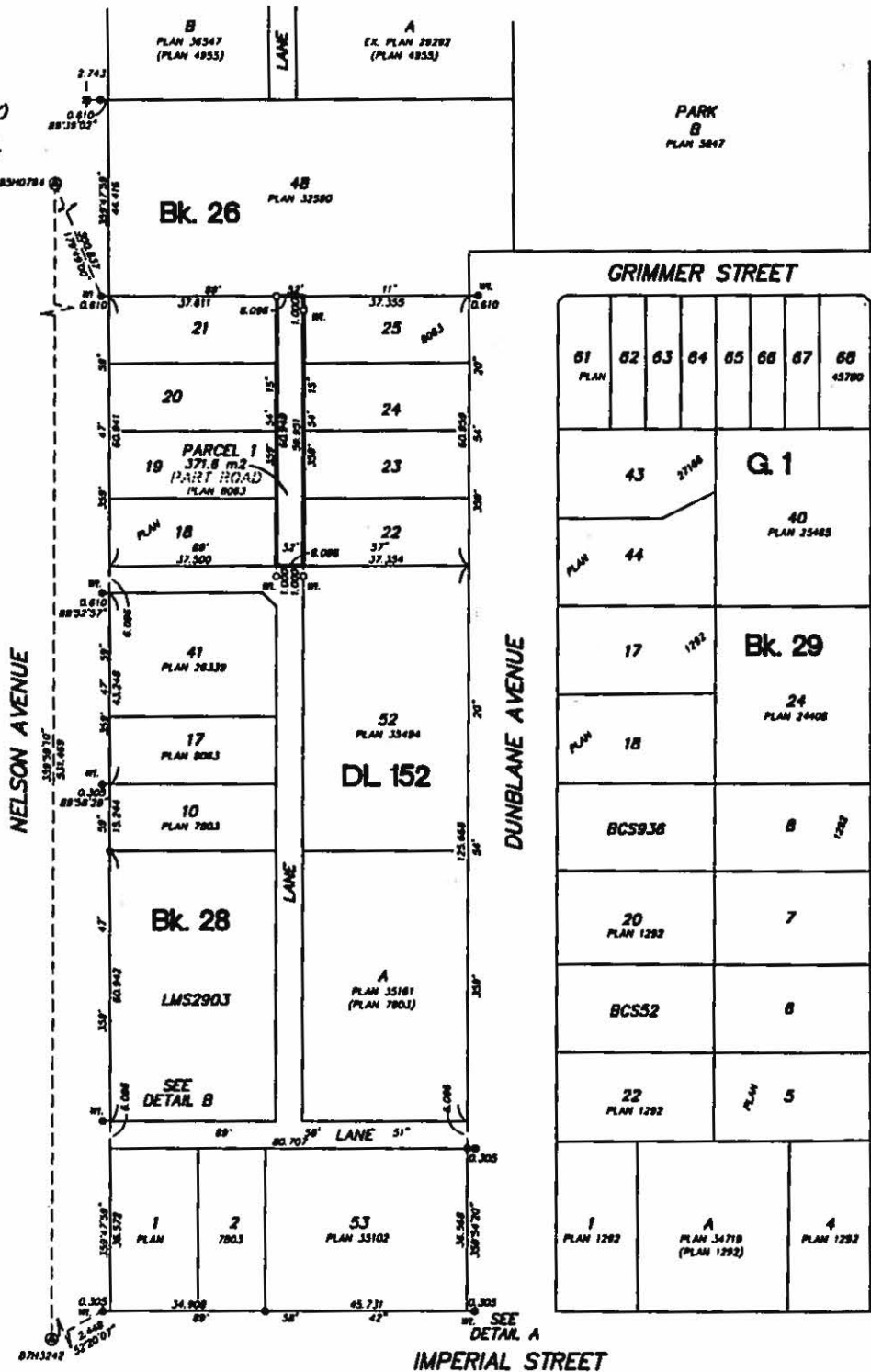
CLERK _____

WITNESS AS TO BOTH DONATORS

Name _____

Address _____

Occupation _____



I, JESSE MORIN, A BRITISH COLUMBIA LAND SURVEYOR, CERTIFY
THAT I WAS PRESENT AT AND PERSONALLY SUPERINTENDED THE
SURVEY REPRESENTED BY THIS PLAN, AND THAT THE SURVEY
AND PLAN ARE CORRECT. THE FIELD SURVEY WAS COMPLETED ON
THE 19th DAY OF NOVEMBER, 2010. THE PLAN WAS COMPLETED
AND CHECKED, AND THE CHECKLIST FILED UNDER P.30542,
ON THE 1st DAY OF DECEMBER, 2011.

[Signature]
B.C.L.S.

THIS PLAN LIES WITHIN THE GREATER VANCOUVER REGIONAL DISTRICT

BUTLER
SUNDWICK
1 - 19000 84th Ave
Surrey, BC V4N 2J4
www.butlersundwick.ca
Tel. 604-513-9811
File 3984
Disp. 3984-ROAD-CL