

CITY OF BURNABY

BYLAW NO. 13020

A BYLAW to close and remove the dedication of
certain portions of highway

WHEREAS pursuant to section 40 of the *Community Charter*, SBC 2003 and section 120 of the *Land Title Act* the Council may by bylaw close part of a highway to traffic and remove the dedication of that part of the highway;

AND WHEREAS the Council, before adopting this Bylaw, has caused the required statutory public notice of its intention to be given by advertisement;

AND WHEREAS the Council deems it expedient and in the public interest to stop up and close to traffic and remove the dedication of those portions of highway more particularly hereinafter described;

NOW THEREFORE the Council of the City of Burnaby ENACTS as follows:

1. This Bylaw may be cited as **BURNABY HIGHWAY CLOSURE BYLAW NO. 6, 2011.**
2. ALL AND SINGULAR those certain parcels or tracts of land, situate, lying and being in the City of Burnaby, in the Province of British Columbia, more particularly known and described as all those portions of lane in District Lot 98, Group 1, New Westminster District dedicated as lane by Plan 2066 and LMP1024, together containing 228.1m², (hereinafter called "the closed portions of lane") shown outlined on Reference Plan prepared by Grant Butler, B.C.L.S., and deposited in the Land Title Office under Number BCP _____, a copy of which is hereunto annexed, are hereby closed to all types of traffic.

3. The dedication of the closed portions of lane as highway is removed.

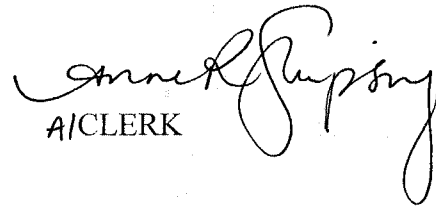
Read a first time this 28th day of November 2011

Read a second time this 28th day of November 2011

Read a third time this 28th day of November 2011

Reconsidered and adopted this 16th day of January 2012


MAYOR


A/CLERK

**REFERENCE PLAN TO ACCOMPANY THE CITY OF BURNABY BYLAW NO. -----
 TO CLOSE AND REMOVE LANE DEDICATION OF PARTS OF LANE
 DEDICATED BY PLAN 2066 AND PLAN LMP1024
 BOTH OF DISTRICT LOT 98 GROUP 1 NEW WESTMINSTER DISTRICT**

THE CITY OF BURNABY

PLAN BCP

PURSUANT TO SECTION 120 LAND TITLE ACT AND
 SECTION 40 OF THE COMMUNITY CHARTER
 BCGS 92G.026
 CITY OF BURNABY

DEPOSITED IN THE LAND TITLE OFFICE,
 AT NEW WESTMINSTER, B.C.
 THIS ____ DAY OF _____, 2011.

MAYOR

CLERK

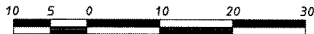
REGISTRAR

WITNESS SIGNATURE OF WITNESS

PRINT NAME OF WITNESS

ADDRESS OF WITNESS

OCCUPATION OF WITNESS



ALL DISTANCES ARE IN METRES AND
 DECIMALS THEREOF, UNLESS OTHERWISE NOTED.
 THE INTENDED PLOT SIZE OF THIS PLAN IS
 560mm IN WIDTH BY 432mm IN HEIGHT (C SIZE)
 WHEN PLOTTED AT A SCALE OF 1:500

INTEGRATED SURVEY AREA NUMBER 25,
 CITY OF BURNABY. NAD83 (CSRS)

THIS PLAN SHOWS HORIZONTAL GROUND-LEVEL
 DISTANCES EXCEPT WHERE OTHERWISE NOTED.
 TO COMPUTE GRID DISTANCES,
 MULTIPLY GROUND-LEVEL DISTANCES BY
 COMBINED FACTOR 0.99958265

LEGEND

GRID BEARINGS ARE DERIVED FROM
 OBSERVATIONS BETWEEN CONTROL MONUMENTS
 DTS421 AND 87H3317

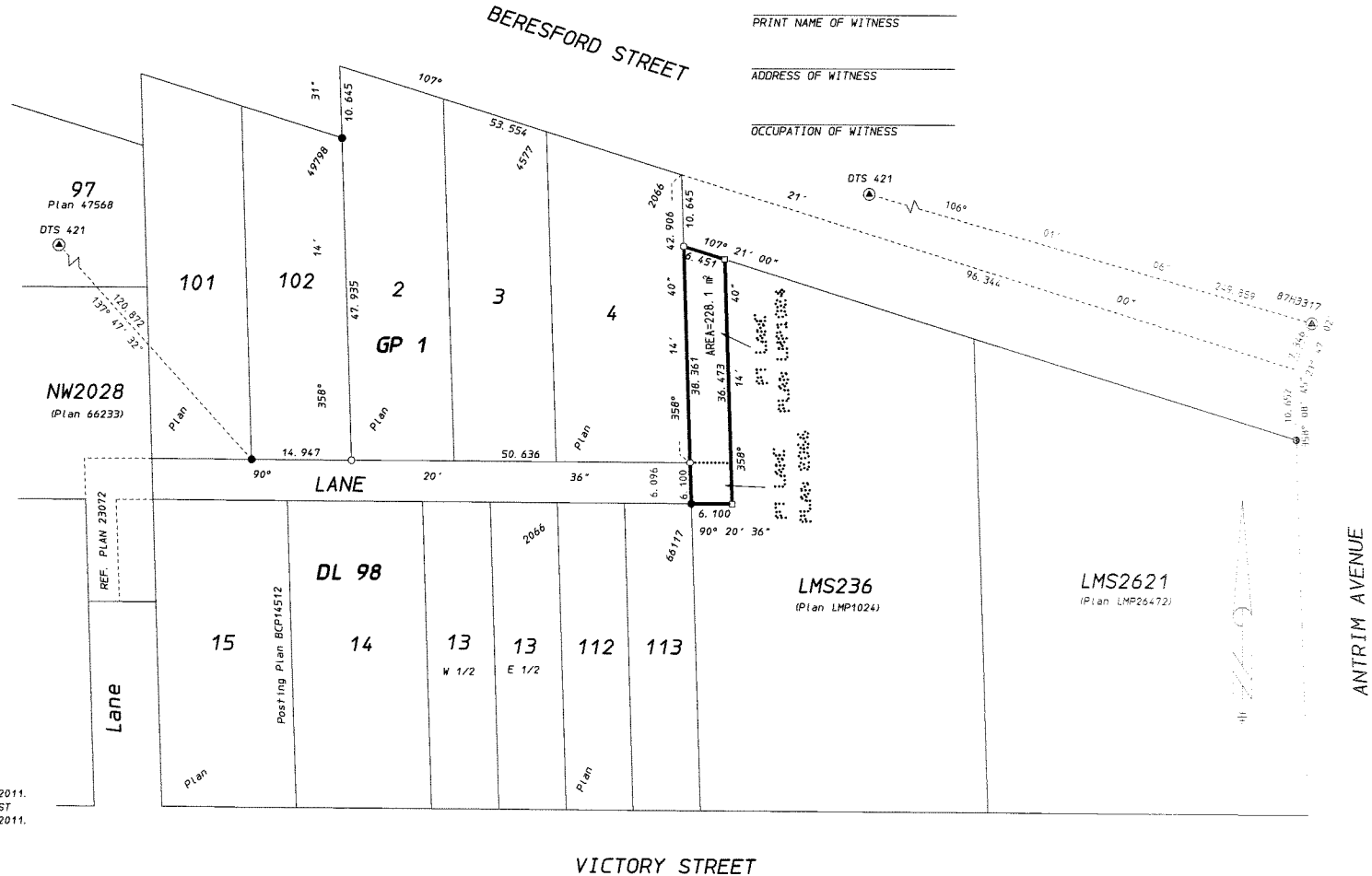
FOUND PLACED

- ⊙ CONTROL MONUMENT
- □ LEAD PLUG
- ○ STANDARD IRON POST
- W† WITNESS

THIS PLAN SHOWS ONE OR MORE WITNESS POSTS
 WHICH ARE NOT SET ON THE TRUE CORNER (S)

I GRANT BUTLER, A BRITISH COLUMBIA LAND SURVEYOR,
 CERTIFY THAT I WAS PRESENT AT AND PERSONALLY
 SUPERINTENDED THE SURVEY REPRESENTED BY THIS PLAN
 AND THAT THE SURVEY AND PLAN ARE CORRECT. THE FIELD
 SURVEY WAS COMPLETED ON THE 26TH DAY OF SEPTEMBER, 2011.
 THE PLAN WAS COMPLETED AND CHECKED, AND THE CHECKLIST
 FILED UNDER #127963, ON THE 28TH DAY OF SEPTEMBER, 2011.

B. C. L. S.



VICTORY STREET

G.R. WILLIAMS LAND SURVEYING
 PROFESSIONAL LAND SURVEYORS
 201-1375 MCLEAN DRIVE
 VANCOUVER, B.C. V5L 3N7
 FILE: 2011-210
 DRAWING: 2011-210R.PLN
 PHONE: (604) 325-6767