

CITY OF BURNABY

BYLAW NO. 12957

A BYLAW to close and remove the dedication of
certain portions of highway

WHEREAS pursuant to section 40 of the *Community Charter*, SBC 2003 and section 120 of the *Land Title Act* the Council may by bylaw close part of a highway to traffic and remove the dedication of that part of the highway;

AND WHEREAS the Council, before adopting this Bylaw, has caused the required statutory public notice of its intention to be given by advertisement;

AND WHEREAS the Council deems it expedient and in the public interest to stop up and close to traffic and remove the dedication of those portions of highway more particularly hereinafter described;

NOW THEREFORE the Council of the City of Burnaby ENACTS as follows:

1. This Bylaw may be cited as **BURNABY HIGHWAY CLOSURE BYLAW NO. 3, 2011.**

2. ALL AND SINGULAR those certain parcels or tracts of land, situate, lying and being in the City of Burnaby, in the Province of British Columbia, more particularly known and described as all that portion of road in District Lot 73, Group 1, New Westminster District dedicated as road by Plan 26541 containing 1.682ha (hereinafter called "the closed portion of road") shown outlined and described as Lot 1 on Reference Plan prepared by Grant Butler, B.C.L.S., and deposited in the Land Title Office under Number BCP_____, a copy of which is hereunto annexed, is hereby closed to all types of traffic.

3. The dedication of the closed portions of road as highway is removed.

Read a first time this 13th day of January 2014

Read a second time this 13th day of January 2014

Read a third time this 13th day of January 2014

Reconsidered and adopted this 24th day of February 2014


MAYOR

CLERK


REFERENCE PLAN TO ACCOMPANY THE CITY OF BURNABY BYLAW NO. 12957
 TO CLOSE AND REMOVE ROAD DEDICATION OF
 ROAD NOTED AS C AND D PLAN 26541 (SEE DF BB1321525)
 BOTH OF DISTRICT LOT 73 GROUP 1 N. W. D.

PLAN BCP _____

REF. No. _____

Deposited in the Land Title Office,
 at New Westminster, B. C.
 This _____ day of _____, 2011.

Registrar _____

PURSUANT TO SECTION 120 (LAND TITLE ACT) AND
 SECTION 40 OF THE COMMUNITY CHARTER
 BCSS 936 036
 CITY OF BURNABY



ALL DISTANCES ARE IN METRES AND
 DECIMALS THEREOF, UNLESS OTHERWISE NOTED.
 THE INTENDED PLOT SIZE OF THIS PLAN IS
 864m IN WIDTH BY 540m IN HEIGHT @ SIZE
 WHEN PLOTTED AT A SCALE OF 1:1000

INTEGRATED SURVEY AREA NUMBER 25,
 CITY OF BURNABY, NA003 (CSRS)

THIS PLAN SHOWS HORIZONTAL GROUND-LEVEL
 DISTANCES EXCEPT WHERE OTHERWISE NOTED.
 TO COMPUTE WIND DISTANCES,
 MULTIPLY GROUND-LEVEL DISTANCES BY
 COMBINED FACTOR 0.9999999

LEGEND

GRID BEARINGS ARE DERIVED FROM
 OBSERVATIONS BETWEEN CONTROL MONUMENTS
 82H5013 AND 82H5014

FOUND PLACES

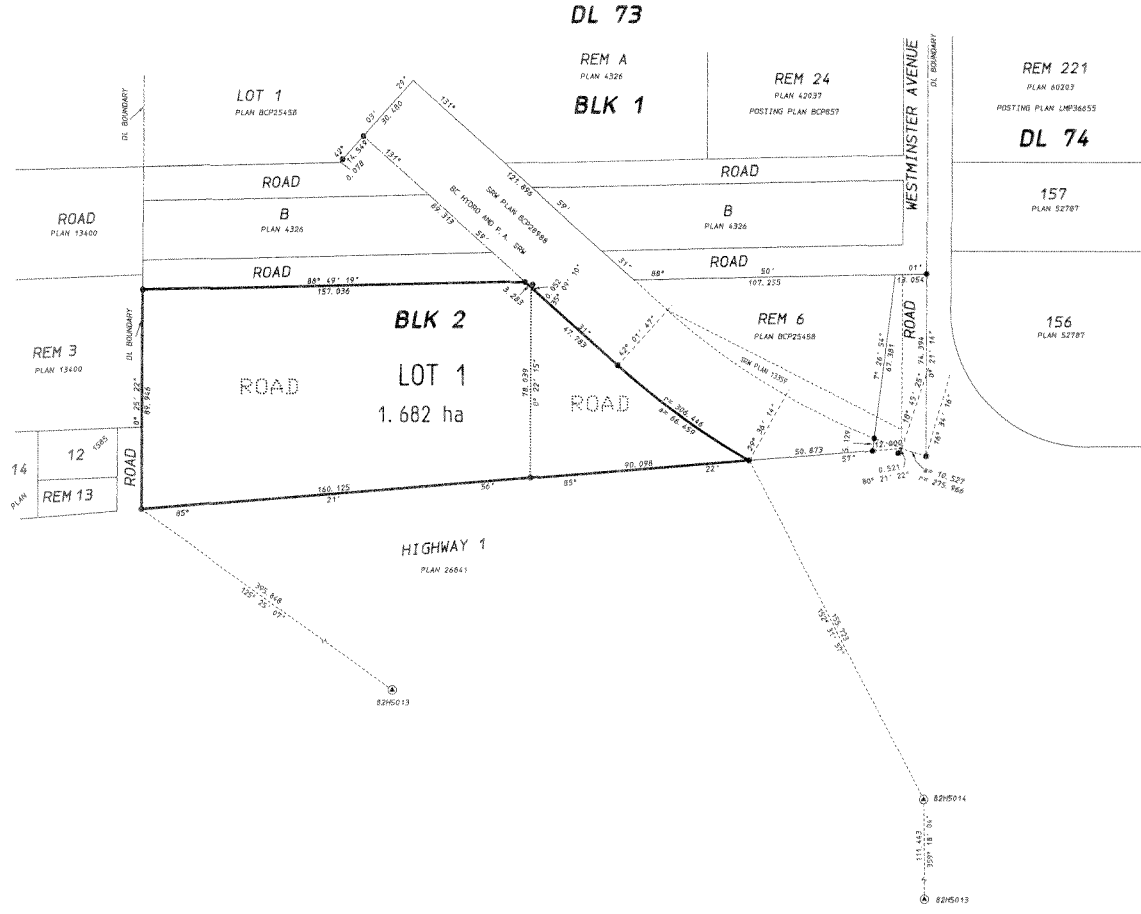
- ⊕ CONTROL MONUMENT
- ⊙ LEAD PLUG
- ⊙ STANDARD IRON POST
- ⊙ WITNESS

THIS PLAN SHOWS ONE OR MORE WITNESS POSTS
 WHICH ARE NOT SET ON THE TRUE CORNERS

I GRANT BUTLER, A BRITISH COLUMBIA LAND SURVEYOR,
 CERTIFY THAT I WAS PRESENT AT AND PERSONALLY
 SUPERINTENDED THE SURVEY REPRESENTED BY THIS PLAN
 AND THAT THE SURVEY AND PLAN ARE CORRECT. THE FIELD
 SURVEY WAS COMPLETED ON THE 21ST DAY OF JUNE, 2011.
 THE PLAN WAS COMPILED AND CHECKED, AND THE CHECKLIST
 FILED UNDER 82H5013, ON THE 27TH DAY OF OCTOBER, 2011.

B.C.L.S.

THIS PLAN LIES WITHIN THE GREATER VANCOUVER REGIONAL DISTRICT



THE CITY OF BURNABY

MAYOR _____

CLERK _____

WITNESS Signature of Witness _____

Print Name of Witness _____

Address of Witness _____

Occupation of Witness _____

HERMON + OKE

BC LAND SURVEYORS
 201-1375 MCLEAN DRIVE
 VANCOUVER, B. C. V5L 3N7
 PHONE: (604) 687-0841
 FILE: 2011-101
 DRAWING: 2011-101.PLN