

**CITY OF BURNABY**

**BYLAW NO. 12941**

A BYLAW to amend Bylaw No. 4742, being Burnaby Zoning Bylaw 1965, as amended by Bylaw Nos. 11523 and 12787, being Burnaby Zoning Bylaw 1965, Amendment Bylaw Nos. 21, 2003, No. 16, 2010;

WHEREAS application for rezoning has been made to the Council:

AND WHEREAS the Council has held a public hearing thereon after duly giving notice of the time and place of such hearing as prescribed by Sections 892 and 893 of the *Local Government Act*, R.S.B.C. 1996;

NOW THEREFORE the Council of the City of Burnaby ENACTS as follows:

1. This Bylaw may be cited as **BURNABY ZONING BYLAW 1965, AMENDMENT BYLAW NO. 17, 2011.**

2. Bylaw No. 4742, as amended by Bylaw Nos. 11523, and 12787, is further amended as follows:

(a) The Map (hereinafter called "Map 'A'"), attached to and forming an integral part of Bylaw No. 4742, being "Burnaby Zoning Bylaw 1965", and designated as the Official Zoning Map of the City of Burnaby, is hereby amended according to the Map (hereinafter called "Map 'B'"), marginally numbered R.Z. 3830, annexed to this Bylaw, and in accordance with the explanatory legend, notations, references and boundaries designated, described, delimited and specified in particularity shown upon said Map 'B'; and the various boundaries and districts shown upon said Map 'B' respectively are an amendment of and in addition to the respective districts, designated and marked on said Map 'A' insofar as the same are changed, modified or varied thereby, and the said Map 'A' shall be deemed to be and is hereby declared to be amended accordingly and the said Map

'B' is hereby declared to be and shall form an integral part of said Map 'A', as if originally incorporated therein and shall be interpreted accordingly.

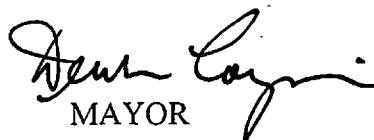
(b) The Comprehensive Development Plan more particularly described in Bylaw Nos. 11523 and 12787 is amended as may be necessary by the development plan entitled "SOUTH SITE: STILL CREEK WORKS YARD" prepared by WALTER FRANCL ARCHITECTURE and on file in the office of the Director Planning and Building; any development on the lands rezoned by this Bylaw shall be in conformity with the said Comprehensive Development Plan as amended.

Read a first time this 5<sup>th</sup> day of May 2011

Read a second time this 13<sup>th</sup> day of June 2011

Read a third time this 17<sup>th</sup> day of October 2011

Reconsidered and adopted this 5<sup>th</sup> day of March 2012

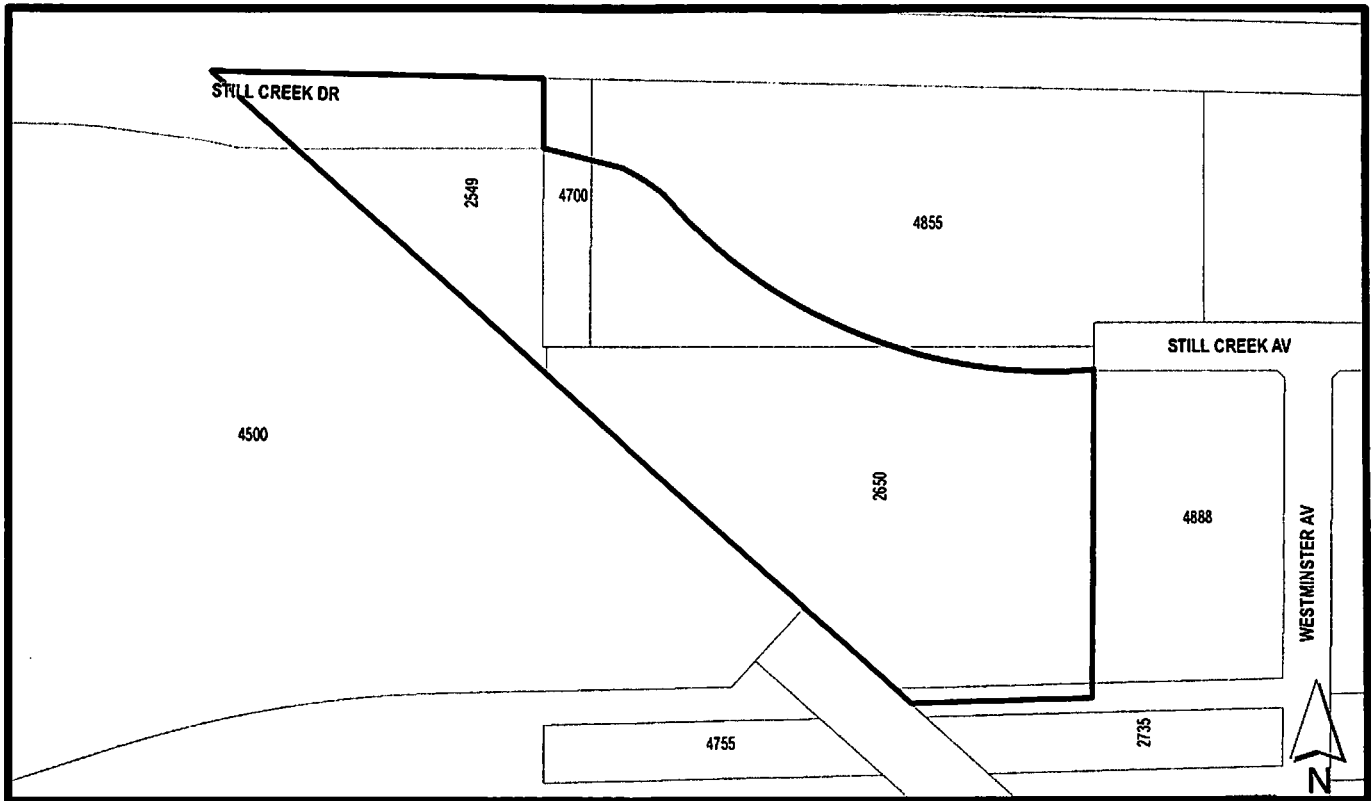
  
MAYOR

  
A/CLERK

BYLAW NUMBER 12941 BEING A BYLAW TO AMEND BYLAW NUMBER 4742 BEING BURNABY ZONING BYLAW 1965

**REZ. 10-41**


LEGAL: Parcel "C" (Bylaw Plan 60856), D.L. 124, Group 1, NWD Plan 1543, Portion of Parcel "B" (Ref. Plan 4406), D.L. 124, Group 1, Except: Part Subdivided by Plan 42351, NWD, Lot 5, D.L. 124, Group 1, NWD Plan BCP25458, Lot A, Blk 1, Except: Part Subdivided by Plan 42037, D.L. 73, Group 1, NWD Plan 4326



THE AREA(S) SHOWN ABOVE OUTLINED IN BLACK ( ——— ) IS (ARE) REZONED

FROM: CD Comprehensive Development District (based on M2 General Industrial District and M3a Heavy Industrial District)

TO: Amended CD Comprehensive Development District (based on M2 General Industrial District, and M3 Heavy Industrial District and in accordance with the development plan entitled "South Site: Still Creek Works Yard" prepared by Walter Francl Architecture)

	PLANNING & BUILDING DEPARTMENT	
DATE: MAR 23 2011	<p style="text-align: center;"><b>OFFICIAL ZONING MAP</b></p> <p style="text-align: right;">Map "B" 3830 No. REZ.</p>	
SCALE: 1:3,196		
DRAWN BY: DJ		