

**CITY OF BURNABY**

**BYLAW NO. 12899**

A BYLAW to close and remove the dedication of  
a certain portion of highway

WHEREAS pursuant to section 40 of the *Community Charter* and section 120 of the *Land Title Act* the Council may by bylaw close part of a highway to traffic and remove the dedication of that part of the highway;

AND WHEREAS the Council, before adopting this Bylaw, has caused the required statutory public notice of its intention to be given by advertisement;

AND WHEREAS the Council deems it expedient and in the public interest to stop up and close to traffic and remove the dedication of that portion of highway more particularly hereinafter described;

NOW THEREFORE the Council of the City of Burnaby ENACTS as follows:

1. This Bylaw may be cited as **BURNABY HIGHWAY CLOSURE BYLAW NO. 1, 2011.**
2. ALL AND SINGULAR that certain parcel or tract of land, situate, lying and being in the City of Burnaby, in the Province of British Columbia, more particularly known and described as all that portion of road in District Lot 206, Group 1, New Westminster District, dedicated by Plan 1071 containing 10.9m<sup>2</sup> (hereinafter called "the closed portion of road") shown outlined and described as Parcel A on Reference Plan prepared by R.E. Petersen, B.C.L.S., and deposited in the Land Title Office under Number BCP \_\_\_\_\_, a copy of which is hereunto annexed (hereinafter called "the plan") is hereby closed to all types of traffic.

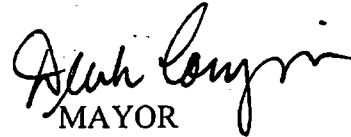
3. The dedication of the closed portion of road as highway is removed.

Read a first time this 17<sup>th</sup> day of January 2011


Read a second time this 17<sup>th</sup> day of January 2011

Read a third time this 17<sup>th</sup> day of January 2011

Reconsidered and adopted this 21<sup>st</sup> day of February 2011



Alan Conyrie  
MAYOR



CLERK

# REFERENCE PLAN TO ACCOMPANY CITY OF BURNABY HIGHWAY CLOSING BYLAW NO. \_\_\_\_\_, TO CLOSE AND REMOVE PART OF ROAD DEDICATED ON PLAN 1071, DL 206, GROUP 1, NWD.

# PLAN BCP

Registered in the Land Title Office at New Westminster, B.C., this day of \_\_\_\_\_, 2010

Pursuant to Section 120, Land Title Act, and Section 40, Community Charter. B.C.G.S. 926.026

Registrar

U.C. Ref. No. \_\_\_\_\_

Scale 1 : 250

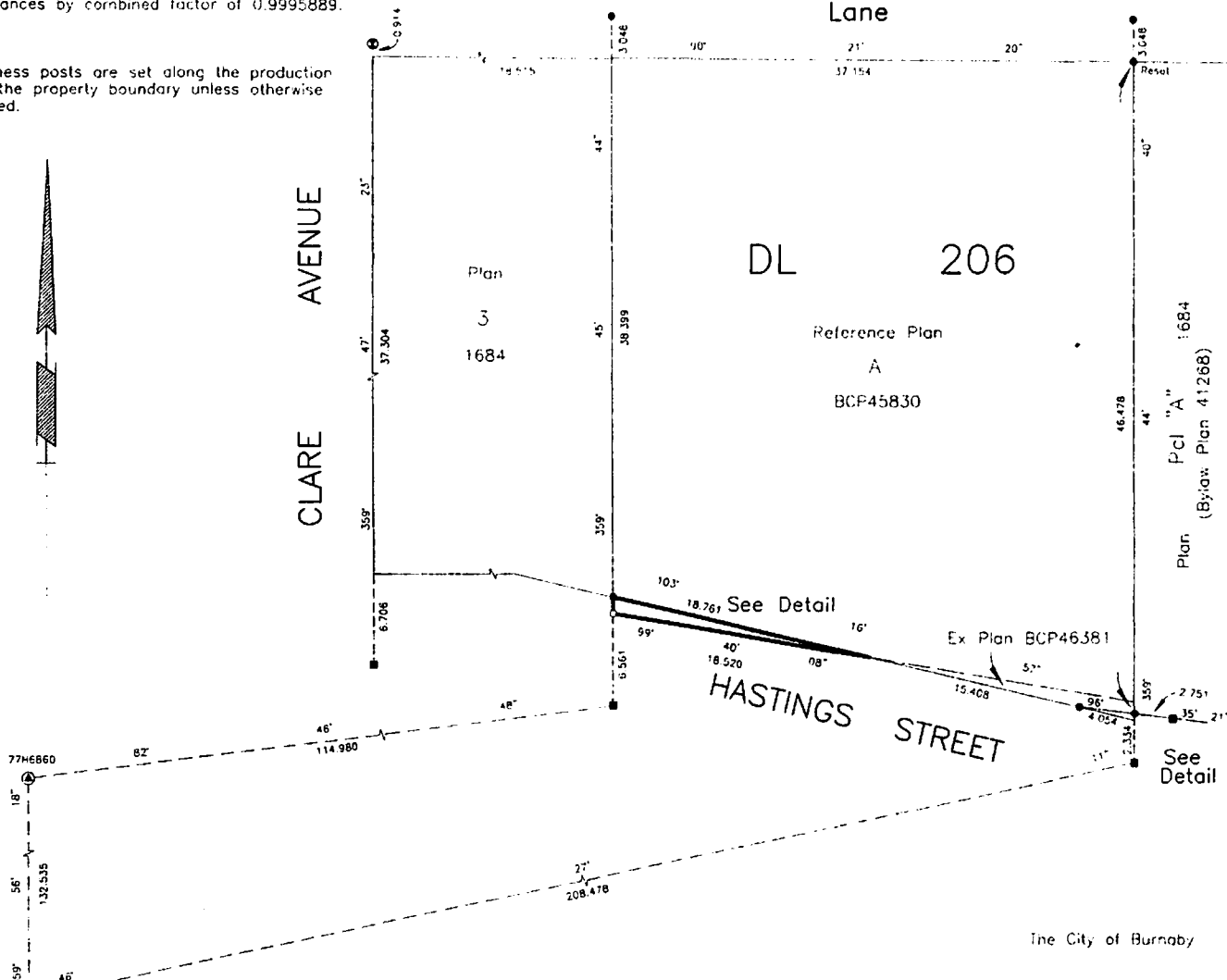


Integrated Survey Area No. 25, Burnaby, NAD'83 (CSRS)  
 All distances are in metres. Grid bearings are derived from observations between geodetic control monuments 77H6860 and 77H6861. This plan shows horizontal ground-level distances except where otherwise noted. To compute grid distances, multiply ground-level distances by combined factor of 0.9995889.

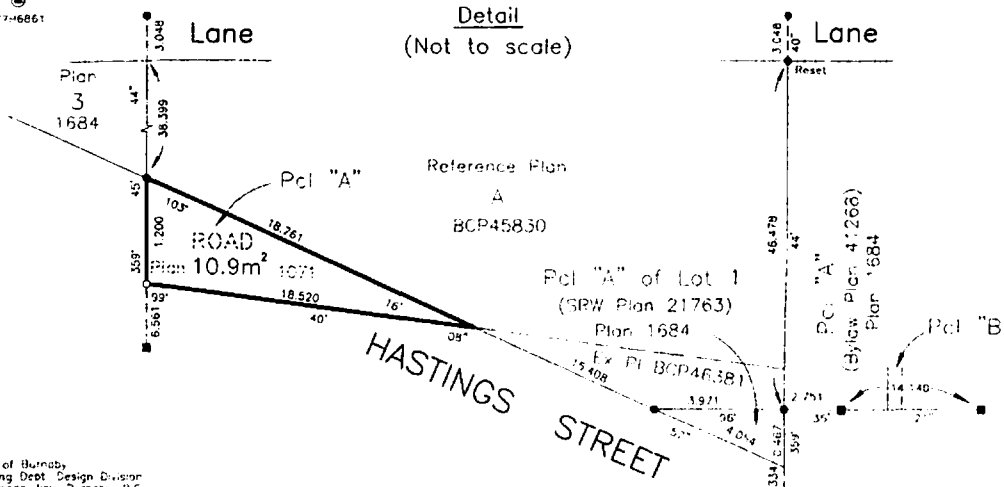
### Legend

- denotes control monument found.
- denotes standard iron post found.
- denotes lead plug found.
- denotes standard iron post placed.
- denotes standard capped post found.

Witness posts are set along the production of the property boundary unless otherwise noted.



### Detail (Not to scale)



The City of Burnaby

Mayer	_____	(Printed Name)
Clerk	_____	(Printed Name)
Witness as to above Signatures	_____	(Printed Name)
Address	_____	
Occupation	_____	

I, R. E. Petersen, a British Columbia Land Surveyor of Burnaby, in British Columbia, certify that I was present at and personally superintended the survey represented by this plan and that the survey and plan are correct. The field survey was completed on the 7<sup>th</sup> day of December, 2010. The plan was completed and checked, and the checklist filed under LCP#117307, on the 8<sup>th</sup> day of December, 2010.

*R. E. Petersen*  
 B.C.L.S.

" This plan lies within the Greater Vancouver Regional District. "