

CITY OF BURNABY

BYLAW NO. 12395

A BYLAW to close and remove the dedication of
certain portions of highway

WHEREAS pursuant to section 40 of the *Community Charter*, SBC 2003 and section 120 of the *Land Title Act* the Council may by bylaw close part of a highway to traffic and remove the dedication of that part of the highway;

AND WHEREAS the Council, before adopting this Bylaw, has caused the required statutory public notice of its intention to be given by advertisement;

AND WHEREAS the Council deems it expedient and in the public interest to stop up and close to traffic and remove the dedication of those portions of highway more particularly hereinafter described;

NOW THEREFORE the Council of the City of Burnaby ENACTS as follows:

1. This Bylaw may be cited as **BURNABY HIGHWAY CLOSURE BYLAW NO. 11, 2007.**
2. ALL AND SINGULAR those certain parcels or tracts of land, situate, lying and being in the City of Burnaby, in the Province of British Columbia, more particularly known and described as all those portions of road in Group 1, New Westminster District:
 - (a) District Lot 175, dedicated as road by Plan 3261 containing 0.237 ha,
 - (b) District Lot 164, dedicated as road by Plan 3068 containing 0.250 ha,
 - (c) District Lot 161, dedicated as road by Plan 1742 containing 0.131 ha, and
 - (d) District Lot 164, dedicated as road by Plan 2692 containing 0.132 ha

(hereinafter called "the closed portions of road") shown outlined and described as Pcl. "1", Pcl. "2", Pcl. "3" and Pcl. "4", respectively, on Reference Plan prepared by W. Papove, B.C.L.S., and deposited in the Land Title Office under Number BCP _____, a copy of which is hereunto annexed is hereby closed to all types of traffic.

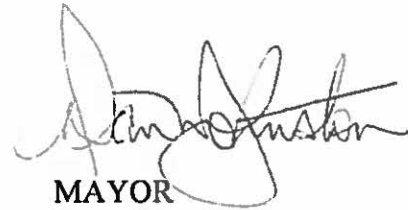
3. The dedication of the closed portions of road as highway is removed.

Read a first time this 10th day of December 2007


Read a second time this 10th day of December 2007

Read a third time this 10th day of December 2007

Reconsidered and adopted this 21st day of January 2008



MAYOR



CLERK

**REFERENCE PLAN TO ACCOMPANY
CITY OF BURNABY ROAD CLOSING
AND ABANDONMENT BYLAW#
COVERING PORTIONS OF ROAD
SHOWN DEDICATED ON PLAN 1742,
PLAN 2692, REFERENCE PLAN 3068**

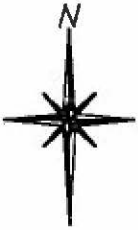
**AND PLAN 3261,
DISTRICT LOTS 161, 164 AND 175, GROUP 1,
NEW WESTMINSTER DISTRICT**

SCALE: 1:1250



All distances are in metres

**PURSUANT TO SECTION 120 LAND TITLE ACT
AND SECTION 40 OF THE COMMUNITY CHARTER
BCGS 926.025**



LEGEND :

- ⊕ Indicates control monument found
- ⊙ Indicates special survey monument found
- ⊗ Indicates standard capped iron post found
- ⊙ Indicates standard iron post found
- ⊙ Indicates standard iron post placed

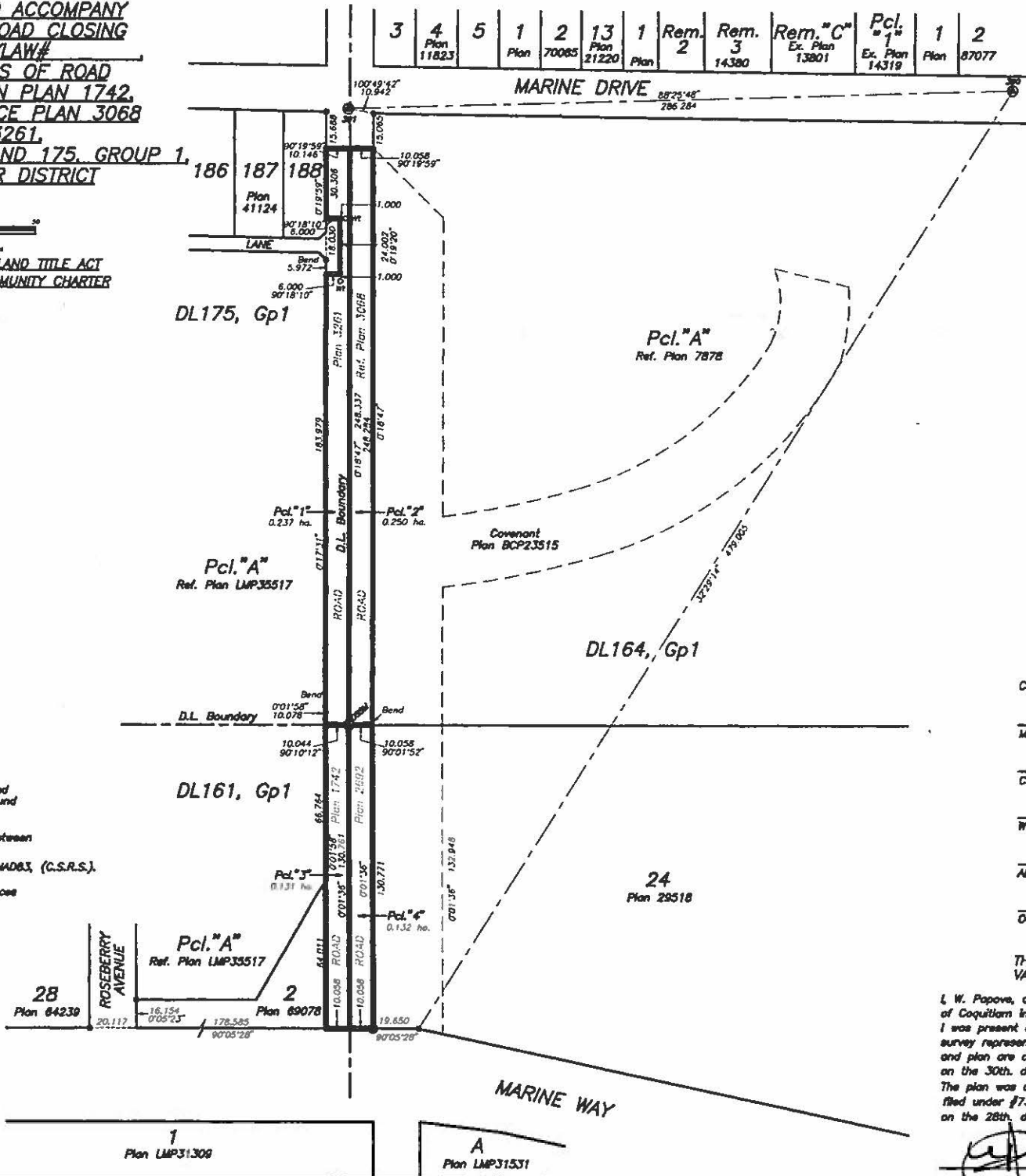
Grid bearings are derived from observations between control monuments 390 and 391.

Integrated Survey Area #25, City of Burnaby, NAD83, (C.S.R.S.).

This plan shows horizontal ground-level distances except where otherwise noted. To compute grid distances, multiply ground-level distances by combined factor 0.99960025.

All distances are in metres.

PAPOVE
PROFESSIONAL LAND SURVEYING INC.
303 - 1150 WESTWOOD STREET
COQUITLAM, B.C., V3B 7B8
TEL : (604) 484-5180
FAX : (604) 484-8008
FILE NUMBER : 5145P1B



3	4 Plan 11823	5	1 Plan 70085	2	13 Plan 21220	1 Plan	Rem. 2 14380	Rem. 3 13801	Rem. C 13801	Pcl. 1 14318	1 Plan	2 87077
---	-----------------	---	-----------------	---	------------------	-----------	--------------------	--------------------	--------------------	--------------------	-----------	------------

Plan BCP

Deposited in the Land Title Office
at New Westminster, B.C., this ___ day
of _____ 2007

DEPUTY-REGISTRAR
REF. NO. _____

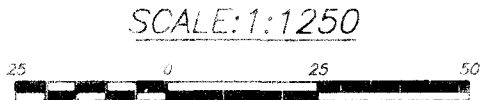
CITY OF BURNABY
MAYOR : AUTHORIZED SIGNATORY
CLERK : AUTHORIZED SIGNATORY
WITNESS
ADDRESS OF WITNESS
OCCUPATION OF WITNESS

THIS PLAN LIES WITHIN THE GREATER
VANCOUVER REGIONAL DISTRICT

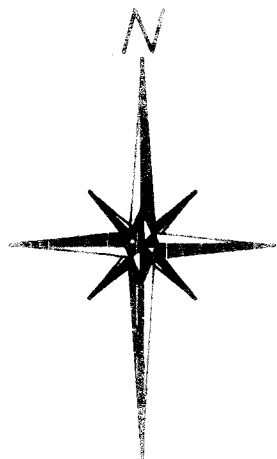
L. W. Papove, a British Columbia Land Surveyor,
of Coquitlam in British Columbia, certify that
I was present at and personally superintended the
survey represented by this plan, and that the survey
and plan are correct. The field survey was completed
on the 30th. day of October, 2007.
The plan was completed and checked, and the checklist
filed under #73871
on the 28th. day of November, 2007.

B.C.L.S.

REFERENCE PLAN TO ACCOMPANY
CITY OF BURNABY ROAD CLOSING
AND ABANDONMENT BYLAW#
COVERING PORTIONS OF ROAD
SHOWN DEDICATED ON PLAN 1742,
PLAN 2692, REFERENCE PLAN 3068
AND PLAN 3261,
DISTRICT LOTS 161, 164 AND 175, GROUP 1,
NEW WESTMINSTER DISTRICT



PURSUANT TO SECTION 120 LAND TITLE ACT
 AND SECTION 40 OF THE COMMUNITY CHARTER
 BCGS 926.025



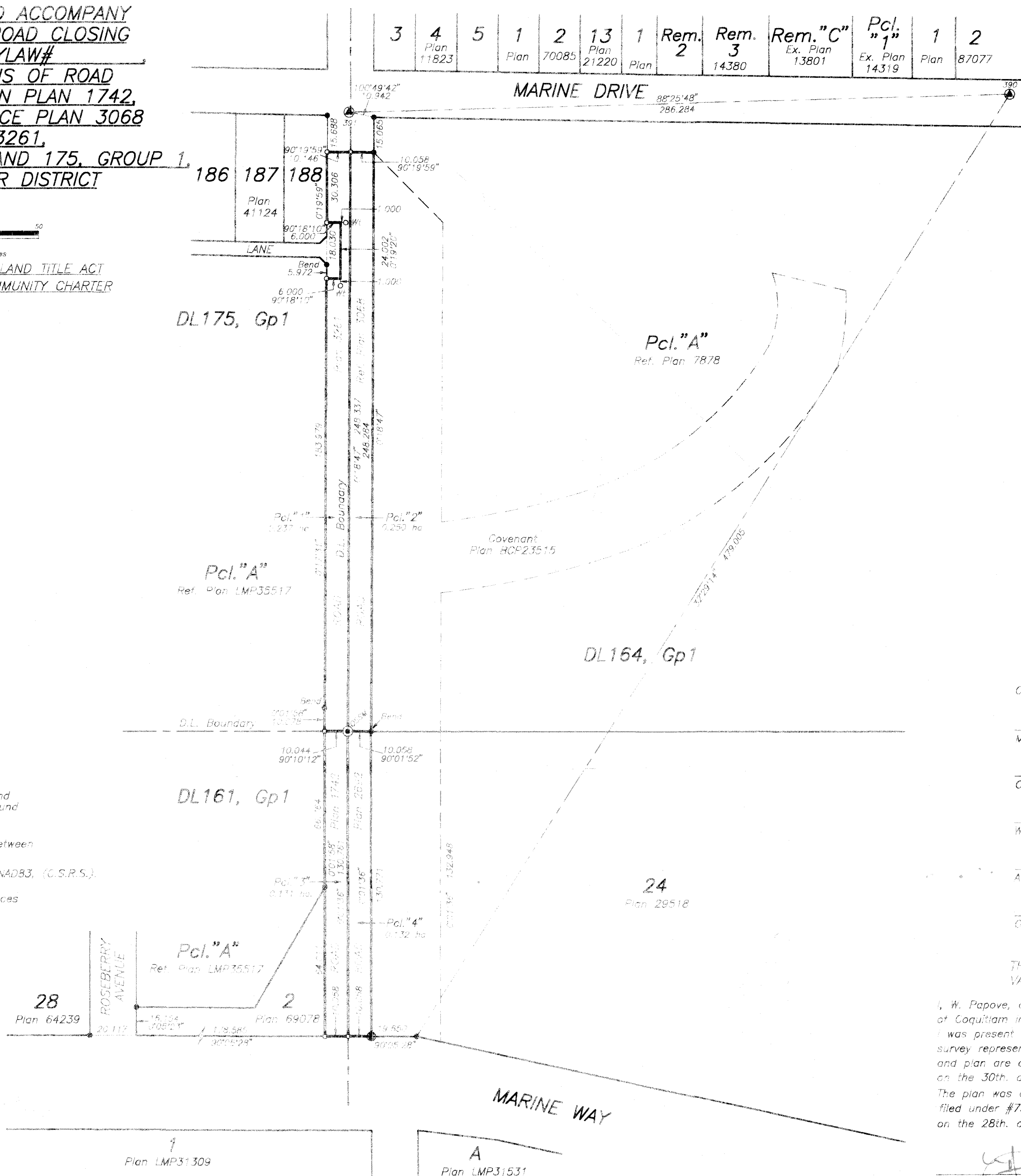
3	4	5	1	2	13	1	Rem. 2	Rem. 3	Rem. "C"	Pcl. "1"	1	2
	Plan 11823		Plan 70085	Plan 21220	Plan			14380	Ex. Plan 13801	Ex. Plan 14319	Plan	87077

Plan BCP

Deposited in the Land Title Office
 at New Westminster, B.C., this ... day
 of 2007

DEPUTY-REGISTRAR

REF. NO. _____



LEGEND :

- ⊙ indicates control monument found
- ⊙SSM indicates special survey monument found
- ⊙ indicates standard capped iron post found
- ⊙ indicates standard iron post found
- indicates standard iron post placed

Grid bearings are derived from observations between control monuments 390 and 391.
 Integrated Survey Area #25, City of Burnaby, NAD83, (G.S.R.S.).

This plan shows horizontal ground-level distances except where otherwise noted. To compute grid distances, multiply ground-level distances by combined factor 0.99960025.

All distances are in metres

CITY OF BURNABY

MAYOR : AUTHORIZED SIGNATORY

CLERK : AUTHORIZED SIGNATORY

WITNESS

ADDRESS OF WITNESS

OCCUPATION OF WITNESS

THIS PLAN LIES WITHIN THE GREATER VANCOUVER REGIONAL DISTRICT

I, W. Papove, a British Columbia Land Surveyor, of Coquitlam in British Columbia, certify that I was present at and personally superintended the survey represented by this plan, and that the survey and plan are correct. The field survey was completed on the 30th day of October, 2007.
 The plan was completed and checked, and the checklist filed under #73971 on the 28th day of November, 2007.

B.C.L.S.

PAPOVE
 PROFESSIONAL LAND SURVEYING INC.
 202 - 1120 WESTWOOD STREET
 COQUITLAM, B.C., V3B 7K8
 TEL : (604) 464-5199
 FAX : (604) 464-6509
 FILE NUMBER : 5145P1B

1
 Plan LMP31309

A
 Plan LMP31531