

CITY OF BURNABY

BYLAW NO.12383

A BYLAW to close and remove the dedication of
certain portions of highway

WHEREAS pursuant to section 40 of the *Community Charter*, SBC 2003 and section 120 of the *Land Title Act* the Council may by bylaw close part of a highway to traffic and remove the dedication of that part of the highway;

AND WHEREAS the Council, before adopting this Bylaw, has caused the required statutory public notice of its intention to be given by advertisement;

AND WHEREAS the Council deems it expedient and in the public interest to stop up and close to traffic and remove the dedication of those portions of highway more particularly hereinafter described;

NOW THEREFORE the Council of the City of Burnaby ENACTS as follows:

1. This Bylaw may be cited as **BURNABY HIGHWAY CLOSURE BYLAW NO. 8, 2007.**

2. ALL AND SINGULAR those certain parcels or tracts of land, situate, lying and being in the City of Burnaby, in the Province of British Columbia, more particularly known and described as all those portions of road in District Lot 211, Group 1, New Westminster District:

- (a) dedicated as road by Plan 80811 containing 164.5m², and
- (b) dedicated as road by Plan 5880 containing 42.6m²,

(hereinafter called "the closed portions of road") shown outlined and described as Pcl. A, B and C on Reference Plan prepared by Grant Butler, B.C.L.S., and deposited in the Land Title Office under

Number BCP _____, a copy of which is hereunto annexed is hereby closed to all types of traffic.

3. The dedication of the closed portions of road as highway is removed.

Read a first time this 19TH day of November 2007

Read a second time this 19TH day of November 2007

Read a third time this 19TH day of November 2007

Reconsidered and adopted this 7th day of January 2008


MAYOR

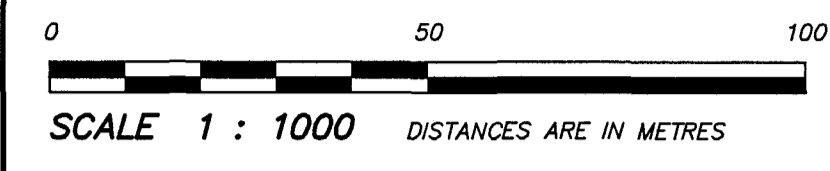


CLERK

DEPOSITED IN THE LAND TITLE OFFICE AT NEW WESTMINSTER, B.C. THIS DAY OF 2007.

REFERENCE PLAN TO ACCOMPANY CITY OF BURNABY ROAD CLOSING BYLAW No. OF PARTS ROAD DEDICATED ON PLAN 5880 AND PLAN 80811 DISTRICT LOT 211 GROUP 1 NEW WESTMINSTER DISTRICT B.C.G.S. 92G.026

PURSUANT TO SECTION 120 OF THE LAND TITLE ACT.



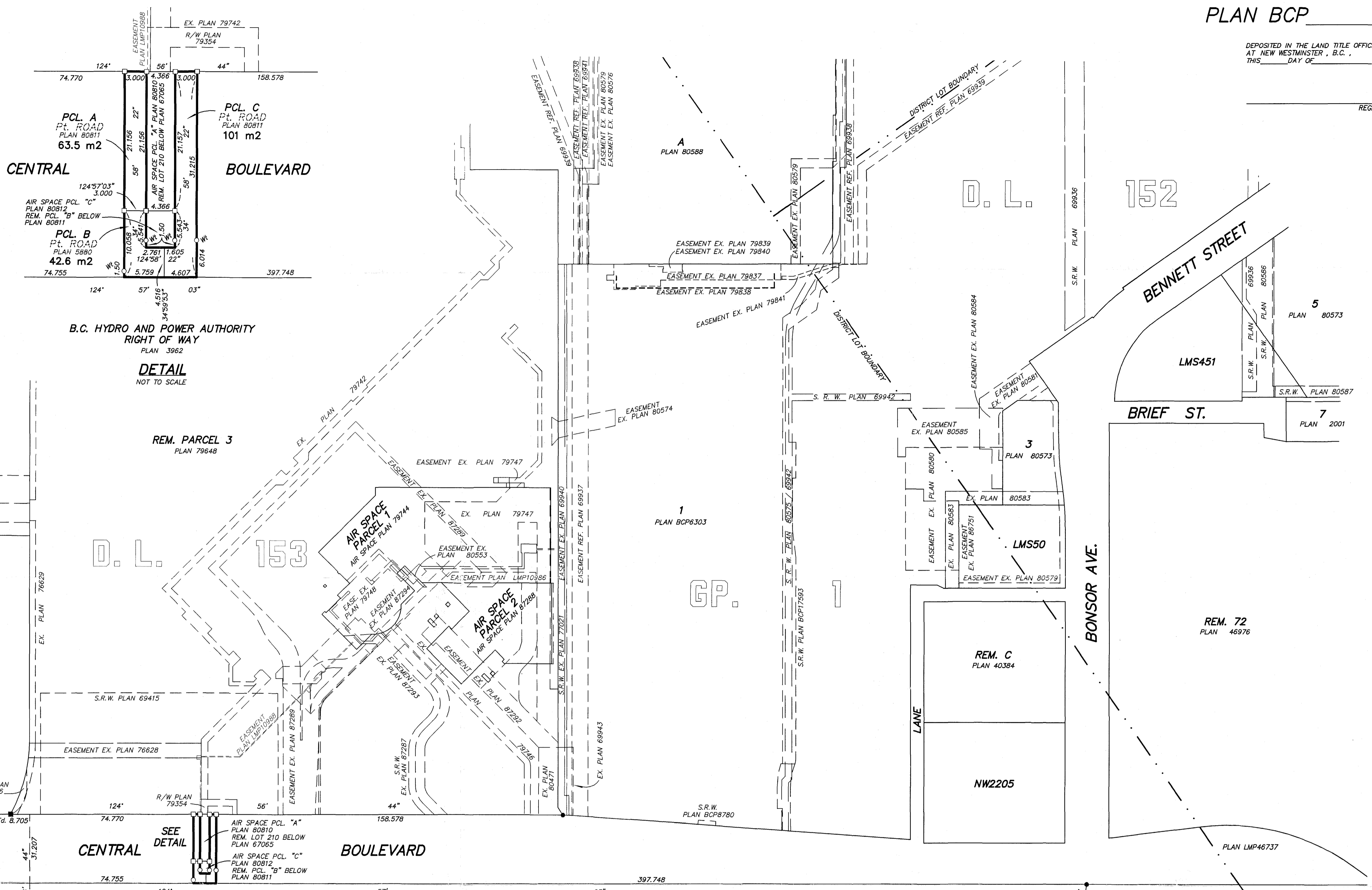
INTEGRATED SURVEY AREA NO. 25 (BURNABY) NAD83(CSRs) THIS PLAN SHOWS HORIZONTAL GROUND-LEVEL DISTANCES EXCEPT WHERE OTHERWISE NOTED. TO COMPUTE GRID DISTANCES, MULTIPLY GROUND-LEVEL DISTANCES BY COMBINED FACTOR, 0.9995824

LEGEND

GRID BEARINGS ARE DERIVED FROM OBSERVATIONS BETWEEN CONTROL MONUMENTS 87H3246 AND 87H3251

FOUND PLACED

- ⊙ DENOTES CONTROL MONUMENT
- DENOTES LEAD PLUG
- DENOTES IRON POST
- m2 DENOTES SQUARE METRES



B.C. HYDRO AND POWER AUTHORITY RIGHT OF WAY PLAN 3962
DETAIL NOT TO SCALE

SEE DETAIL
AIR SPACE PCL. "A" PLAN 80810 REM. LOT 210 BELOW PLAN 67065
AIR SPACE PCL. "C" PLAN 80812 REM. PCL. "B" BELOW PLAN 80811

MAYOR

CLERK

WITNESS AS TO BOTH SIGNATURES

Name _____

ADDRESS _____

OCCUPATION _____

I, GRANT BUTLER, A BRITISH COLUMBIA LAND SURVEYOR, OF DELTA, BRITISH COLUMBIA, CERTIFY THAT I WAS PRESENT AT AND PERSONALLY SUPERINTENDED THE SURVEY REPRESENTED BY THIS PLAN, AND THAT THE SURVEY AND PLAN ARE CORRECT. THE FIELD SURVEY WAS COMPLETED ON THE 8th DAY OF NOVEMBER, 2007. THE PLAN WAS COMPLETED AND CHECKED, AND THE CHECKLIST FILED UNDER #73176, ON THE 13th DAY OF NOVEMBER, 2007.

Grant Butler
B.C.L.S.

BOOK OF REFERENCE	
DESCRIPTION	AREA (m2)
PART ROAD DEDICATED ON PLAN 80811 (PARCELS A AND C)	164.5
PARTS ROAD DEDICATED ON PLAN 5880 (PARCEL B)	42.6
TOTAL	207.1

BUTLER SUNDVICK & ASSOCIATES
PROFESSIONAL LAND SURVEYORS
4, 19089 94th AVENUE
SURREY, B.C. V4N 3S4
T: 604-513-9611 F: 604-513-2202
FILE # B3524
DWG # 3524-R01