

CITY OF BURNABY

BYLAW NO. 12312

A BYLAW to close and remove the dedication of
a certain portion of highway

WHEREAS pursuant to section 40 of the *Community Charter*, SBC 2003 and section 120 of the *Land Title Act* the Council may by bylaw close part of a highway to traffic and remove the dedication of that part of the highway;

AND WHEREAS the Council, before adopting this Bylaw, has caused the required statutory public notice of its intention to be given by advertisement;

AND WHEREAS the Council deems it expedient and in the public interest to stop up and close to traffic and remove the dedication of that portion of highway more particularly hereinafter described;

NOW THEREFORE the Council of the City of Burnaby ENACTS as follows:

1. This Bylaw may be cited as **BURNABY HIGHWAY CLOSURE BYLAW NO. 6, 2007.**
2. ALL AND SINGULAR that certain parcel or tract of land, situate, lying and being in the City of Burnaby, in the Province of British Columbia, more particularly known and described as all that portion of road in District Lot 69, Group 1, New Westminster District, dedicated by Plan 1321 containing 218.5m² (hereinafter called "the closed portion of road") shown outlined and described as Parcel 1 on Reference Plan prepared by Edmund T. Wong, B.C.L.S., and deposited in the Land Title Office under Number BCP_____, a copy of which is hereunto annexed (hereinafter called "the plan") is hereby closed to all types of traffic.

3. The dedication of the closed portion of road as highway is removed.


Read a first time this 27th day of August 2007

Read a second time this 27th day of August 2007

Read a third time this 27th day of August 2007

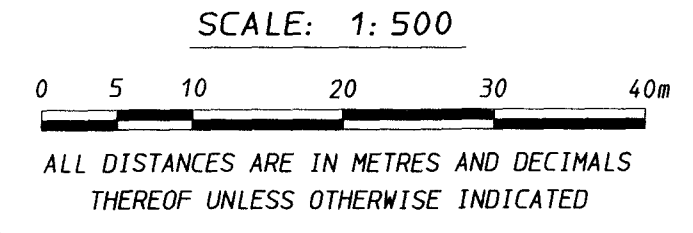
Reconsidered and adopted this 15th day of October 2007


MAYOR



CLERK

REFERENCE PLAN TO ACCOMPANY THE CITY OF BURNABY BYLAW NO. TO REMOVE
 THE ROAD DEDICATION FOR THE ROAD DEDICATED BY PLAN 1321, BLOCK 27,
 DISTRICT LOT 69, GROUP 1, NEW WESTMINSTER DISTRICT
 PURSUANT TO SECTION 40, COMMUNITY CHARTER
 AND SECTION 120, LAND TITLE ACT
 B. C. G. S. 92G. 025

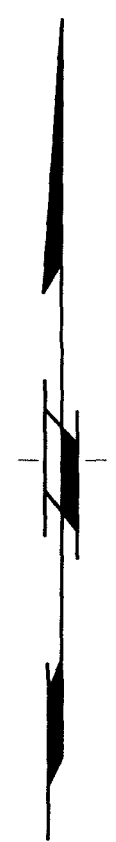


PLAN BCP

Deposited in the Land Title office
 at New Westminster, B.C. this ___ day
 of _____, 2007.

Deputy Registrar

Ref: _____



- LEGEND:
- ▲ control monument found
 - standard concrete post found
 - lead plug found
 - standard iron post found
 - standard iron post placed
 - lead plug placed

THE CITY OF BURNABY

Authorized Signatory
 (Sign and print name)

Authorized Signatory
 (Sign and print name)

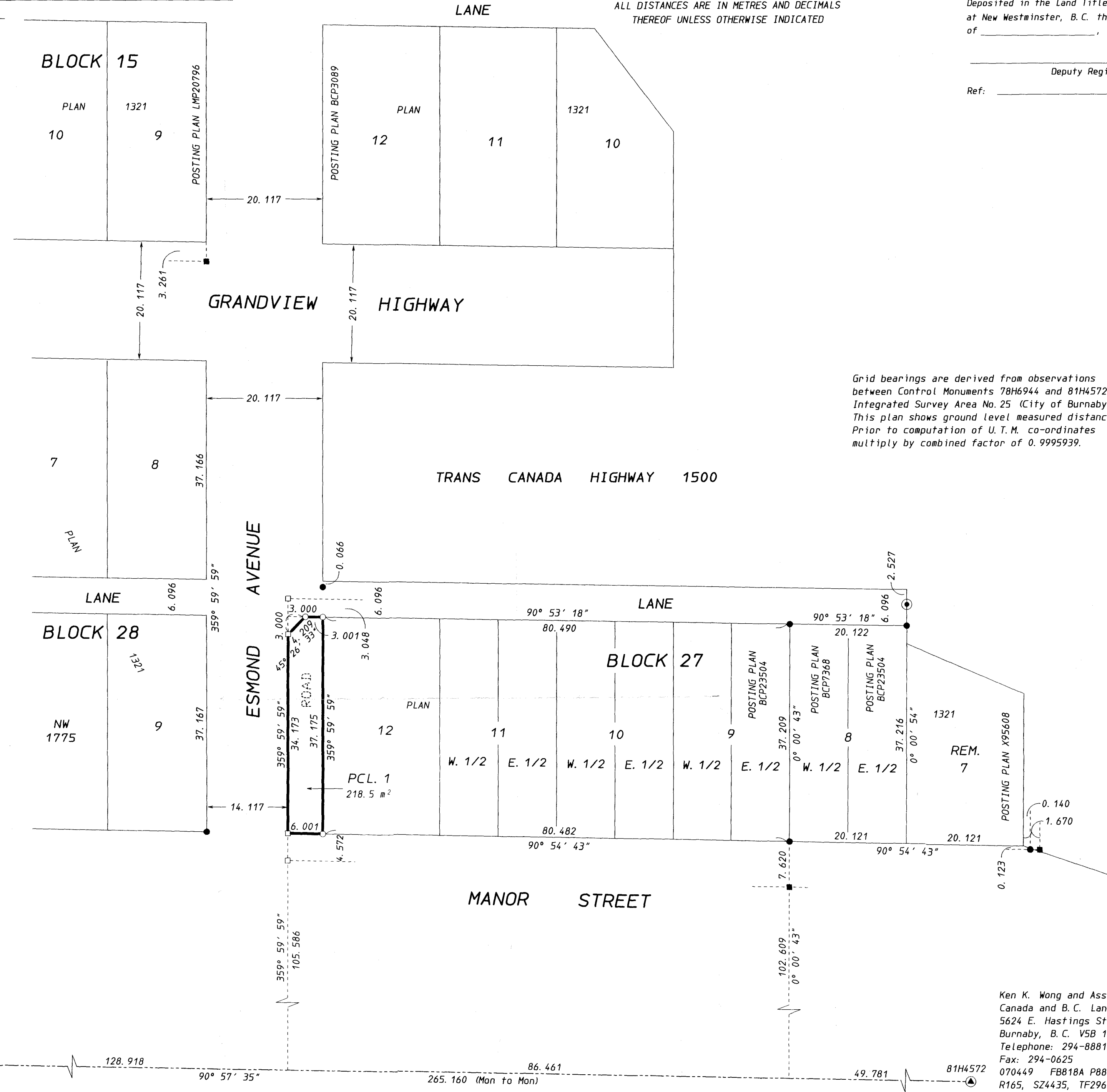
Witness as to signatures
 (Sign and print name)

Address of _____
 Witness: _____

Occupation: _____

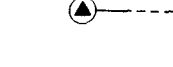
I, Edmund T. Wong, a British Columbia
 Land Surveyor, of the City of Burnaby,
 in British Columbia, certify that I was
 present at and personally superintended
 the survey represented by this plan, and
 that the survey and plan are correct.
 The field survey was completed on the
 18th day of July, 2007. The plan was
 completed and checked, and the checklist
 filed under #67753 on the 19th day
 of July, 2007.

Edmund T. Wong
 B. C. L. S.



Grid bearings are derived from observations
 between Control Monuments 78H6944 and 81H4572.
 Integrated Survey Area No. 25 (City of Burnaby)
 This plan shows ground level measured distances.
 Prior to computation of U. T. M. co-ordinates
 multiply by combined factor of 0.9995939.

78H6944



128.918

90° 57' 35"

86.461

265.160 (Mon to Mon)

49.781

81H4572



FILE: SU-1810

This plan lies within the Greater Vancouver Regional District.

Ken K. Wong and Associates
 Canada and B. C. Land Surveyors
 5624 E. Hastings Street
 Burnaby, B. C. V5B 1R4
 Telephone: 294-8881
 Fax: 294-0625
 070449 FB818A P88-89 SU1812
 R165, SZ4435, TF2961C, SMZ439
 Data File: 070449P.raw
 Drawn by: WP