

**CITY OF BURNABY**

**BYLAW NO. 12257**

A BYLAW to close and remove the dedication of  
a certain portion of highway

WHEREAS pursuant to section 40 of the *Community Charter*, SBC 2003 and section 120 of the *Land Title Act* the Council may by bylaw close part of a highway to traffic and remove the dedication of that part of the highway;

AND WHEREAS the Council, before adopting this Bylaw, has caused the required statutory public notice of its intention to be given by advertisement;

AND WHEREAS the Council deems it expedient and in the public interest to stop up and close to traffic and remove the dedication of that portion of highway more particularly hereinafter described;

NOW THEREFORE the Council of the City of Burnaby ENACTS as follows:

1. This Bylaw may be cited as **BURNABY HIGHWAY CLOSURE BYLAW NO. 4, 2007.**
2. ALL AND SINGULAR that certain parcel or tract of land, situate, lying and being in the City of Burnaby, in the Province of British Columbia, more particularly known and described as all that portion of road in District Lot 211, Group 1, New Westminster District, dedicated by Plan BCP3161 containing 107m<sup>2</sup> (hereinafter called "the closed portion of road") shown outlined and described as Pcl A on Reference Plan prepared by Gary Sundvick, B.C.L.S., and deposited in the Land Title Office under Number BCP\_\_\_\_\_, a copy of which is hereunto annexed (hereinafter called "the plan") is hereby closed to all types of traffic.

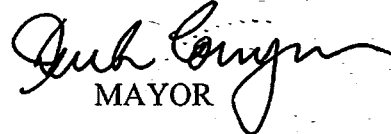
3. The dedication of the closed portion of road as highway is removed.

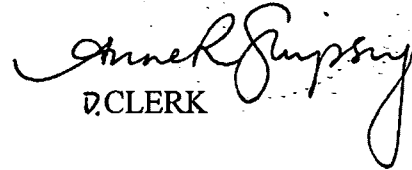
Read a first time this 26<sup>th</sup> day of March 2007

Read a second time this 26<sup>th</sup> day of March 2007

Read a third time this 26<sup>th</sup> day of March 2007

Reconsidered and adopted this 7<sup>th</sup> day of May 2007

  
MAYOR

  
CLERK

REFERENCE PLAN TO ACCOMPANY CITY OF BURNABY  
 ROAD CLOSING BYLAW No. \_\_\_\_\_  
 OF PART ROAD DEDICATED ON PLAN BCP3161  
 DISTRICT LOT 211 GROUP 1  
 NEW WESTMINSTER DISTRICT

B.C.G.S. 92G.026

PURSUANT TO SECTION 120 OF THE LAND TITLE ACT.

PLAN BCP \_\_\_\_\_

DEPOSITED IN THE LAND TITLE OFFICE  
 AT NEW WESTMINSTER, B.C.,  
 THIS \_\_\_\_\_ DAY OF \_\_\_\_\_ 2007.

REGISTRAR



SCALE 1 : 1000 DISTANCES ARE IN METRES



INTEGRATED SURVEY AREA No. 25 (BURNABY)  
 NAD83 (CSRS)

THIS PLAN SHOWS HORIZONTAL GROUND-LEVEL DISTANCES EXCEPT  
 WHERE OTHERWISE NOTED. TO COMPUTE GRID DISTANCES, MULTIPLY  
 GROUND-LEVEL DISTANCES BY CORRECTION FACTOR, 0.9995358

**LEGEND**

GRID BEARINGS ARE DERIVED FROM PLAN BCP0258.

**FOUND PLACED**

- ○ DEVOTES IRON POST
- m2 DEVOTES SQUARE METRES
- PNP DEVOTES POSTING NOT POSSIBLE

REM. 1  
 PLAN BCP0258

CITY OF BURNABY

MAYOR \_\_\_\_\_

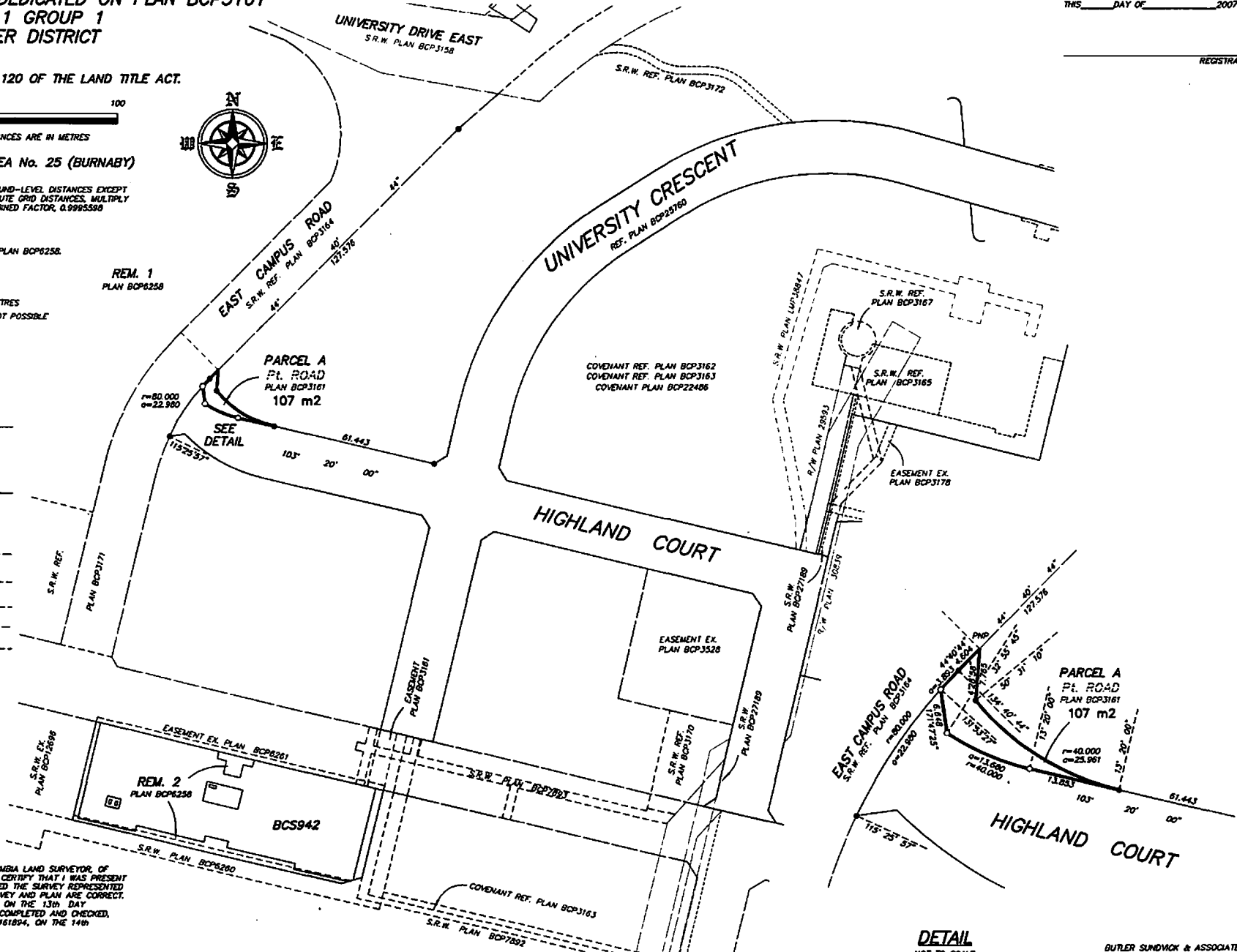
CLERK \_\_\_\_\_

WITNESS AS TO BOTH SIGNATURES

Name \_\_\_\_\_

Address \_\_\_\_\_

Occupation \_\_\_\_\_



I, GARY SUNDVICK, A BRITISH COLUMBIA LAND SURVEYOR OF  
 LANGLEY, IN BRITISH COLUMBIA, CERTIFY THAT I WAS PRESENT  
 AT AND PERSONALLY SUPERINTENDED THE SURVEY REPRESENTED  
 BY THIS PLAN, AND THAT THE SURVEY AND PLAN ARE CORRECT.  
 THE FIELD SURVEY WAS COMPLETED ON THE 13th DAY  
 OF MARCH, 2007. THE PLAN WAS COMPLETED AND CHECKED,  
 AND THE CHECKLIST FILED UNDER #61894, ON THE 14th  
 DAY OF MARCH, 2007.

*G. Sundvick*

B.C.L.S.

**DETAIL**  
 NOT TO SCALE

BUTLER SUNDVICK & ASSOCIATES  
 PROFESSIONAL LAND SURVEYORS  
 4, 19009 54th AVENUE  
 SURREY, B.C. V4N 3S4  
 T. 604.513.9811 F. 604.513.2202  
 FILE : 2653/PHASE 2  
 DWG : 2653-PH2 RD1

THIS PLAN LIES WITHIN THE GREATER VANCOUVER REGIONAL DISTRICT