

**CITY OF BURNABY**

**BYLAW NO. 12216**

A BYLAW to amend Bylaw No. 4742, being Burnaby Zoning Bylaw 1965, as amended by Bylaw Nos. 7036 and 10850, being Burnaby Zoning Bylaw 1965, Amendment Bylaw Nos. 25, 1977 and 57, 1998

WHEREAS application for rezoning has been made to the Council;


AND WHEREAS the Council has held a public hearing thereon after duly giving notice of the time and place of such hearing as prescribed by Sections 892 and 893 of the *Local Government Act*, R.S.B.C. 1996;


NOW THEREFORE the Council of the City of Burnaby ENACTS as follows:

1. This Bylaw may be cited as **BURNABY ZONING BYLAW 1965, AMENDMENT BYLAW NO. 6, 2007.**
2. Bylaw No. 4742, as amended by Bylaw Nos. 7036 and 10850, is further amended as follows:
  - (a) The Map (hereinafter called "Map 'A'"), attached to and forming an integral part of Bylaw No. 4742, being "Burnaby Zoning Bylaw 1965", and designated as the Official Zoning Map of the City of Burnaby, is hereby amended according to the Map (hereinafter called "Map 'B'"), marginally numbered R.Z. 3614, annexed to this Bylaw, and in accordance with the explanatory legend, notations, references and boundaries designated, described, delimited and specified in particularity shown upon said Map 'B'; and the various boundaries and districts shown upon said Map 'B' respectively are an amendment of and in addition to the respective districts, designated and marked on said Map 'A' insofar as the same are changed, modified or varied thereby, and the said Map 'A' shall be deemed to be and is hereby declared to be amended accordingly and the said Map 'B' is hereby declared to be and shall form an integral part of said Map 'A', as if originally incorporated therein and shall be interpreted accordingly.

(b) The Comprehensive Development Plan more particularly described in Bylaw Nos. 7036 and 10850 is amended as may be necessary by the development plan entitled "MOVIE STUDIO/OFFICE BUILDING" prepared by JONATHAN LOSES LTD. and on file in the office of the Director Planning and Building; and any development on the lands rezoned by this Bylaw shall be in conformity with the said Comprehensive Development Plan as amended.

Read a first time this 7<sup>th</sup> day of January 2007  
Read a second time this 5<sup>th</sup> day of February 2007  
Read a third time 3<sup>rd</sup> day of December 2007  
Reconsidered and adopted this 7<sup>th</sup> day of April 2008

  
MAYOR

  
CLERK

CERTIFIED A TRUE COPY  
THIS 8<sup>th</sup> DAY OF APRIL 2008

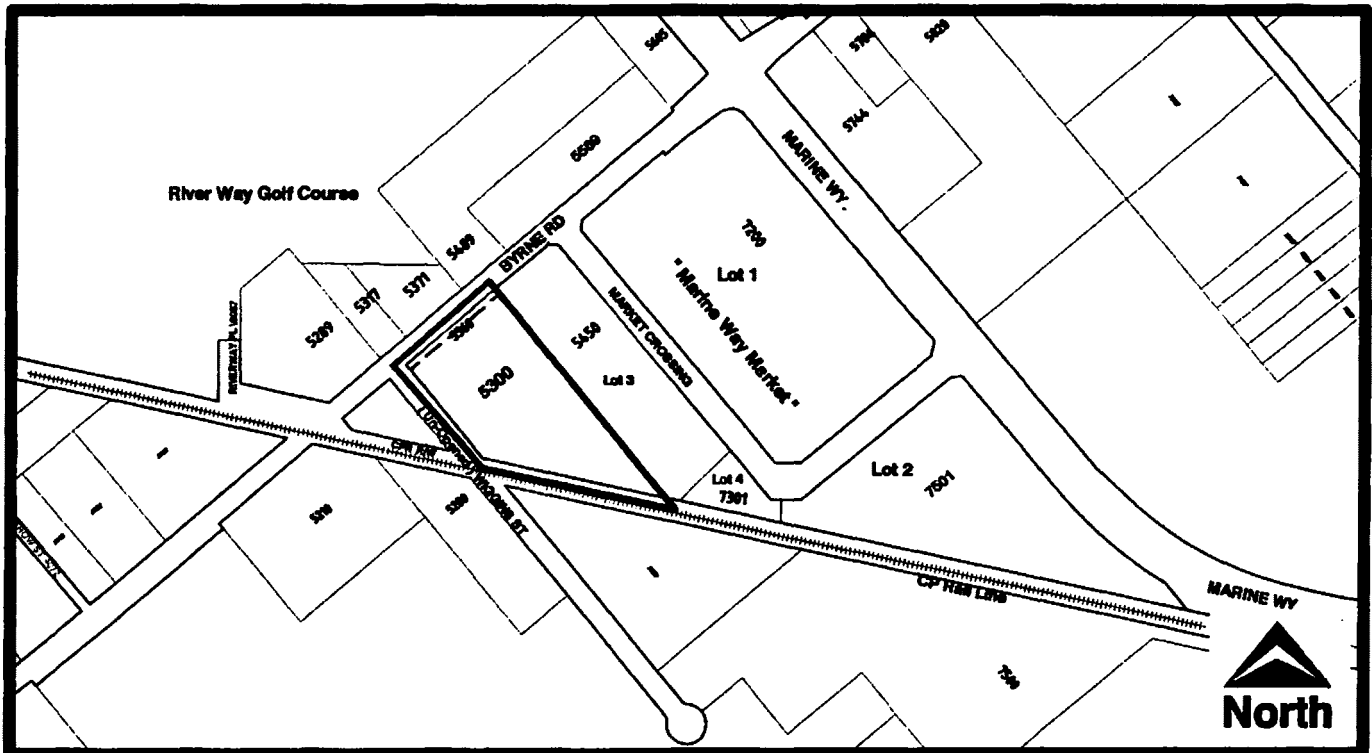
---

AUTHORIZED SIGNATORY CLERK

**REZ. # 06 -- 43**

**BYLAW NUMBER 12216 BEING A BYLAW TO AMEND BYLAW NUMBER 4742 BEING BURNABY ZONING BYLAW 1965**

**LEGAL:** Block 1 Except: Parcel "A" (Ref. Plan LMP25736), D.L. 155B, Group 1, NWD Plan 1248



**THE AREA SHOWN ABOVE OUTLINED IN BLACK ( — ) IS / ARE REZONED**

**FROM:** CD Comprehensive Development District (based on M2 General Industrial District)

**TO:** CD Comprehensive Development District (based on M5 Light Industrial District and Byrne Road and Marine Way Precinct Development Plan guidelines and in accordance with the development plan entitled "Movie Studio/Office Building" prepared by Jonathan Loses Ltd.)



**Planning and Building Department**

**Scale:** N.T.S.

**Drawn By:** J.P.C.

**Date:** January 2007

**OFFICIAL ZONING MAP**

**Map "B"**

**NO.REZ. 3614**

**CITY OF BURNABY**

**BYLAW NO. 10850**

**A BYLAW to amend Bylaw No. 4742, being  
Burnaby Zoning Bylaw 1965**

**WHEREAS application for rezoning has been made to the Council;**

**AND WHEREAS the Council has held a public hearing thereon after duly giving notice of the time and place of such hearing as prescribed by Sections 892 and 893 of the *Municipal Act*, R.S.B.C. 1996;**

**NOW THEREFORE the Council of the City of Burnaby ENACTS as follows:**

- 1. This Bylaw may be cited as BURNABY ZONING BYLAW 1965, AMENDMENT BYLAW NO. 57, 1998.**
  
- 2. The Map (hereinafter called "Map 'A'"), attached to and forming an integral part of Bylaw No. 4742, being "Burnaby Zoning Bylaw 1965", and designated as the Official Zoning Map of the City of Burnaby, is hereby amended according to the Map (hereinafter called "Map 'B'"), marginally numbered R.Z. 3175, annexed to this Bylaw, and in accordance with the explanatory legend, notations, references and boundaries designated, described, delimited and specified in particularity shown upon said Map 'B'; and the various boundaries and districts shown upon said Map 'B' respectively are an amendment of and in substitution for the respective districts, designated and marked on said Map 'A' insofar as the same are changed, modified or varied thereby, and the said Map 'A' shall be deemed to be and is hereby declared to be**

amended accordingly and the said Map 'B' is hereby declared to be and shall form an integral part of said Map 'A', as if originally incorporated therein and shall be interpreted accordingly.

3. The Comprehensive Development Plan entitled "ZOO STUDIO" prepared by RODNEY C. LYONS ARCHITECT, and on file in the office of the Director Planning and Building, is deemed to be attached to and form part of this Bylaw and any development on the lands rezoned by this Bylaw shall be in conformity with the said Comprehensive Development Plan.

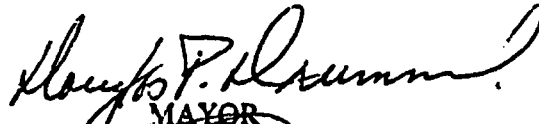

Read a first time this 23rd day of NOVEMBER 1998

Read a second time this 11th day of JANUARY 1999

Read a third time 11th day of JANUARY 1999

Received the approval of the Minister of Transportation and Highways  
this 12th day of JANUARY 1999

Reconsidered and adopted this 25th day of JANUARY 1999

  
MAYOR  
  
CLERK

CERTIFIED A TRUE COPY  
THIS 26TH DAY OF JANUARY 1999

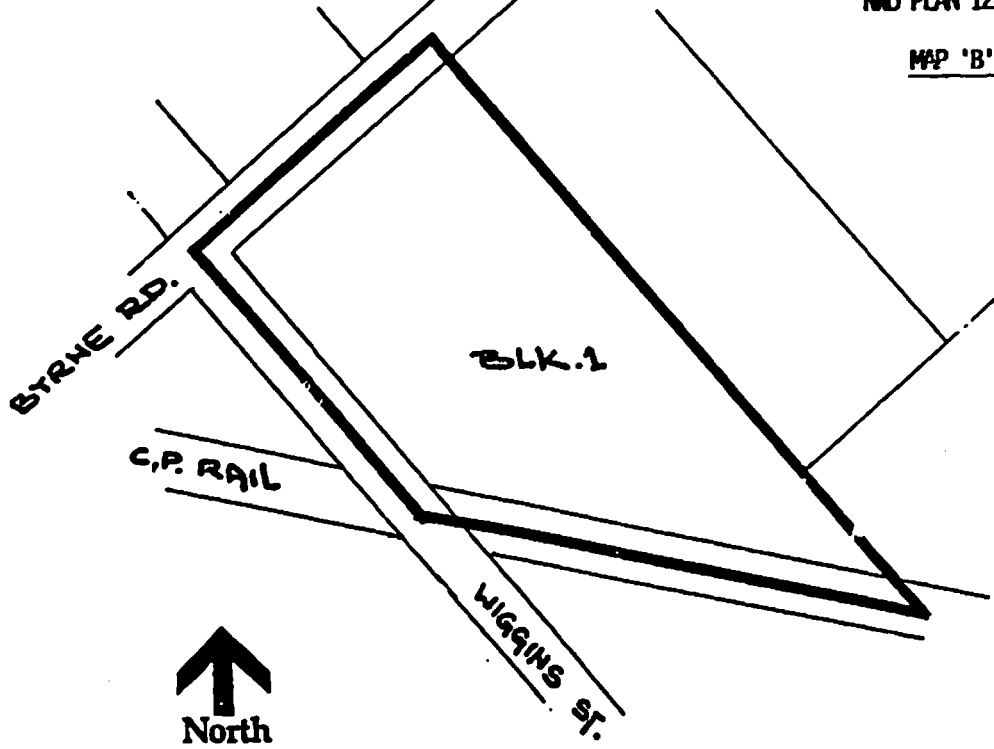
  
\_\_\_\_\_  
AUTHORIZED SIGNATORY  
CLERK

**BYLAW NUMBER 10850 BEING A BYLAW TO AMEND REZ98-47  
 BYLAW NUMBER 4742 BEING THE BURNABY ZONING BYLAW 1965**

**PROPERTY REZONED TO:** AMENDED CD COMPREHENSIVE DEVELOPMENT DISTRICT  
 (BASED ON M2 GENERAL INDUSTRIAL DISTRICT GUIDELINES AND IN ACCORDANCE  
 WITH THE DEVELOPMENT PLAN ENTITLED "ZOO STUDIO" PREPARED BY RODNEY  
 C. LYONS ARCHITECT).

**LEGAL:** BLOCK 1 EXCEPT: PARCEL "A" (RPLMP25736), D.L. 1558, GROUP 1,  
 N&O PLAN 1248

MAP 'B'



**THE AREA(S) SHOWN  
 ABOVE OUTLINED  
 IN BLACK (——)  
 IS (ARE) REZONED:**

**FROM:** CD COMPREHENSIVE DEVELOPMENT DISTRICT (BASED ON M2 GENERAL INDUSTRIAL  
 DISTRICT AND M3A HEAVY INDUSTRIAL DISTRICT GUIDELINES)

**TO:** CD COMPREHENSIVE DEVELOPMENT DISTRICT (BASED ON M2 GENERAL INDUSTRIAL  
 DISTRICT GUIDELINES AND IN ACCORDANCE WITH THE DEVELOPMENT PLAN  
 ENTITLED "ZOO STUDIO" PREPARED BY RODNEY C. LYONS ARCHITECT)

<b>PLANNING DEPARTMENT</b>	
SCALE	1: 2500
DRAWN	JPC
DATE	NOV. 1998



**OFFICIAL ZONING MAP**

No. RZ 3175

30/95

951023

**CITY OF BURNABY**

**BYLAW NO. 10270**

**A BYLAW to amend Bylaw No. 4742, being  
Burnaby Zoning Bylaw 1965**

**WHEREAS** application for rezoning has been made to the Council;

**AND WHEREAS** the Council has held a public hearing thereon after duly giving notice of the time and place of such hearing as prescribed by Sections 956 and 957 of the Municipal Act, R.S.B.C. 1979;

**NOW THEREFORE** the Council of the City of Burnaby **ENACTS** as follows:

1. This Bylaw may be cited as **BURNABY ZONING BYLAW 1965, AMENDMENT BYLAW NO. 41, 1995.**
  
2. The Map (hereinafter called "Map 'A'"), attached to and forming an integral part of Bylaw No. 4742, being "Burnaby Zoning Bylaw 1965", and designated as the Official Zoning Map of the City of Burnaby, is hereby amended according to the Map (hereinafter called "Map 'B'"), marginally numbered R.Z. 3001, annexed to this Bylaw, and in accordance with the explanatory legend, notations, references and boundaries designated, described, delimited and specified in particularity shown upon said Map 'B'; and the various boundaries and districts shown upon said Map 'B' respectively are an amendment of and in substitution for the respective districts, designated and marked on said Map 'A' insofar as the same are changed, modified or varied thereby, and the said Map 'A' shall be deemed to be and is hereby declared to be

amended accordingly and the said Map 'B' is hereby declared to be and shall form an integral part of said Map 'A', as if originally incorporated therein and shall be interpreted accordingly.

3. The Comprehensive Development Plan entitled "COMPREHENSIVE DEVELOPMENT FOR 5300 BYRNE ROAD RECYCLING FACILITY" and on file in the office of the Director Planning and Building, is deemed to be attached to and form part of this Bylaw and any development on the lands rezoned by this Bylaw shall be in conformity with the said Comprehensive Development Plan.



Read a first time this 11th day of SEPTEMBER 1995

Read a second time this 2nd day of OCTOBER 1995

Read a third time 16th day of OCTOBER 1995

Received the approval of the Minister of Transportation and Highways  
this 17th day of OCTOBER 1995

Reconsidered and adopted this 23rd day of OCTOBER 1995

  
MAYOR  
  
CLERK



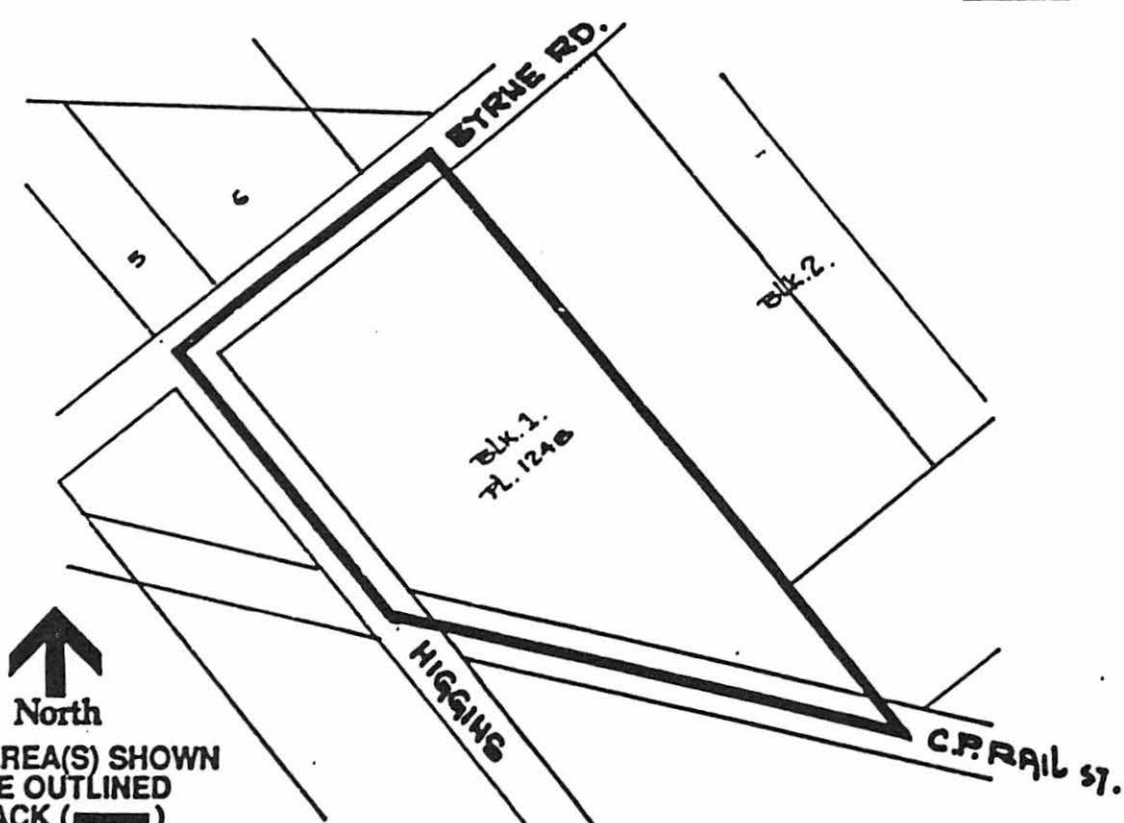
**BYLAW NUMBER 10270 BEING A BYLAW TO AMEND  
BYLAW NUMBER 4742 BEING THE BURNABY ZONING BYLAW 1965**

**PROPERTY REZONED TO:**

CD COMPREHENSIVE DEVELOPMENT DISTRICT (BASED ON M2 GENERAL INDUSTRIAL DISTRICT AND M3a HEAVY INDUSTRIAL DISTRICT GUIDELINES AND THE DEVELOPMENT PLAN ENTITLED "COMPREHENSIVE DEVELOPMENT FOR 5300 BYRNE ROAD RECYCLING FACILITY" DATED 1995 AUGUST 23

LEGAL: BLOCK 1, D.L. 155B, GROUP 1, MWD PLAN 1248

MAP "B"



THE AREA(S) SHOWN  
ABOVE OUTLINED  
IN BLACK (———)  
IS (ARE) REZONED:

FROM: M2 GENERAL INDUSTRIAL DISTRICT

TO: CD COMPREHENSIVE DEVELOPMENT DISTRICT (BASED ON M2 GENERAL INDUSTRIAL DISTRICT AND M3a HEAVY INDUSTRIAL DISTRICT GUIDELINES AND THE DEVELOPMENT PLAN ENTITLED "COMPREHENSIVE DEVELOPMENT PLAN FOR 5300 BYRNE ROAD RECYCLING FACILITY" DATED 1995 AUGUST 23

PLANNING DEPARTMENT	
SCALE	1:3000
DRAWN	J.P.C.
DATE	SEPTEMBER 1995



**OFFICIAL ZONING MAP**

No. RZ 3001