

CITY OF BURNABY

BYLAW NO. 12201

A BYLAW to close and remove the dedication of
certain portions of highway

WHEREAS pursuant to section 40 of the *Community Charter*, SBC 2003 and section 120 of the *Land Title Act* the Council may by bylaw close part of a highway to traffic and remove the dedication of that part of the highway;

AND WHEREAS the Council, before adopting this Bylaw, has caused the required statutory public notice of its intention to be given by advertisement;

AND WHEREAS the Council deems it expedient and in the public interest to stop up and close to traffic and remove the dedication of those portions of highway more particularly hereinafter described;

NOW THEREFORE the Council of the City of Burnaby ENACTS as follows:

1. This Bylaw may be cited as **BURNABY HIGHWAY CLOSURE BYLAW NO. 9, 2006.**
2. ALL AND SINGULAR those certain parcels or tracts of land, situate, lying and being in the City of Burnaby, in the Province of British Columbia, more particularly known and described as all those portions of road in District Lots 166 and 166A, Group 1, New Westminster District:
 - (a) dedicated as road by Plan 524 containing 0.126 ha,
 - (b) dedicated as road by Plan 5734 containing 0.101ha, and
 - (c) dedicated as road by Plan 5736 containing 815 m²,

(hereinafter called "the closed portions of road") shown outlined and described as Pcl. 1, Pcl. 2, and Pcl. 3 on Reference Plan prepared by Grant Butler, B.C.L.S., and deposited in the Land Title Office under Number BCP _____, a copy of which is hereunto annexed is hereby closed to all types of traffic.

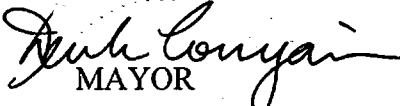
3. The dedication of the closed portions of road as highway is removed.

Read a first time this 4th day of December 2006

Read a second time this 4th day of December 2006

Read a third time this 4th day of December 2006

Reconsidered and adopted this 15th day of January 2007


MAYOR


CLERK

REFERENCE PLAN TO ACCOMPANY CITY OF BURNABY JURNABY ROAD
 DEDICATION CANCELLATION BYLAW NUMBER
 OF PARTS OF ROAD DEDICATED ON PLANS 524, 5734 AND 5736
 DISTRICT LOTS 166 AND 166A GROUP 1
 NEW WESTMINSTER DISTRICT
 PURSUANT TO SECTION 120 OF THE LAND TITLE ACT
 B.C.G.S. 92G.016
 CITY OF BURNABY

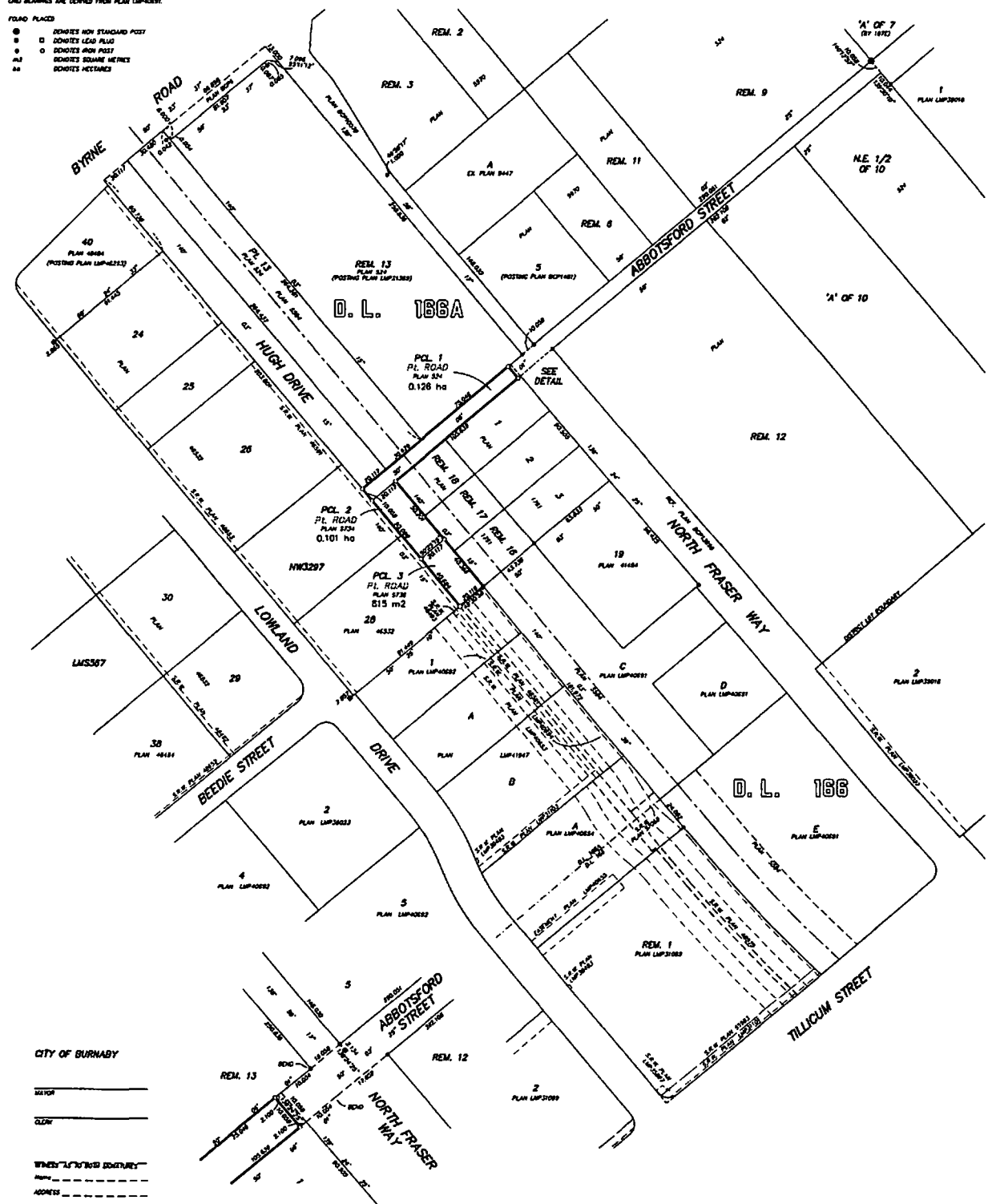
PLAN BCP

DEPOSITED IN THE LAND TITLE OFFICE
 AT NEW WESTMINSTER, B.C.
 _____ DAY OF _____ 19____



SCALE 1 : 1250 DISTANCES ARE IN METRES

LEGEND
 ROAD PLACES
 (S) INDICATES HIGH STANDARD POST
 (D) INDICATES LEGAL FLAG
 (O) INDICATES IRON POST
 (A) INDICATES SQUARE METRES
 (M) INDICATES METRES



CITY OF BURNABY
 SECTION _____
 BLOCK _____
 DISTRICT _____
 NAME _____
 ADDRESS _____
 OCCUPATION _____

DETAIL
 NOT TO SCALE

BOOK OF REFERENCE		
DESCRIPTION	PANEL	AREA
PART ROAD DEDICATED BY PLAN 524	1	0.128 ha
PART ROAD DEDICATED BY PLAN 5734	2	0.101 ha
PART ROAD DEDICATED BY PLAN 5736	3	0.128 ha
TOTAL		0.357 ha

I, GRANT BULLER, A BRITISH COLUMBIA LAND SURVEYOR,
 OF 601A BRITISH COLUMBIA STREET, VANCOUVER, B.C.,
 HEREBY CERTIFY THAT I AM PERSONALLY SUPERVISING THE SURVEY
 HEREIN AND THAT I AM FULLY AWARE OF THE CONTENTS OF THE
 PLAN AND THAT THE FIELD SURVEY WAS COMPLETED ON
 THE 10th DAY OF NOVEMBER, 2004. THE PLAN WAS COMPLETED
 AND CHECKED, AND THE CHECKLIST FILED UNDER COPY 5734
 OF THE 10th DAY OF NOVEMBER, 2004.

Grant Buller
 B.C.L.S.

BULLER BURNHAM & ASSOCIATES
 PROFESSIONAL LAND SURVEYORS
 4, 1700 BURN AVENUE
 BURNABY, B.C. V5A 2S4
 T: 604-253-8611 F: 604-213-2303
 FAX: 604-253-8611
 DWG: 3233-001

THIS PLAN LIES WITHIN THE GREATER VANCOUVER REGIONAL DISTRICT

City of Burnaby
Planning Department

NOV 09 2006

Reg. No.
Attachments