

CITY OF BURNABY

BYLAW NO. 12142

A BYLAW to close and remove the dedication of
certain portions of highway

WHEREAS pursuant to section 40 of the *Community Charter*, SBC 2003 and section 120 of the *Land Title Act* the Council may by bylaw close part of a highway to traffic and remove the dedication of that part of the highway;

AND WHEREAS the Council, before adopting this Bylaw, has caused the required statutory public notice of its intention to be given by advertisement;

AND WHEREAS the Council deems it expedient and in the public interest to stop up and close to traffic and remove the dedication of those portions of highway more particularly hereinafter described;

NOW THEREFORE the Council of the City of Burnaby ENACTS as follows:

1. This Bylaw may be cited as **BURNABY HIGHWAY CLOSURE BYLAW NO. 6, 2006.**
2. ALL AND SINGULAR those certain parcels or tracts of land, situate, lying and being in the City of Burnaby, in the Province of British Columbia, more particularly known and described as all those portions of road in District Lot 32, Group 1, New Westminster District:
 - (a) part of lane dedicated by Plan 34019 containing 220.5 m²;
 - (b) part of lane dedicated by Plan 1848 containing 110.6m²;
 - (c) part of lane dedicated by Plan 2362 containing 110.6m²;
 - (d) part of road dedicated by Plan 2362 containing 846.3m²;
 - (e) part of road dedicated by Plan 11799 containing 846.1m²;

(hereinafter called "the closed portions of road") shown outlined and described as Pcl. A, B, C, D, and E on Reference Plan prepared by R.E. Petersen, B.C.L.S., and deposited in the Land Title Office under Number BCP _____, a copy of which is hereunto annexed is hereby closed to all types of traffic.


3. The dedication of the closed portions of road as highway is removed.

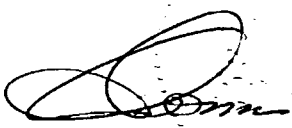
Read a first time this 11th day of September 2006

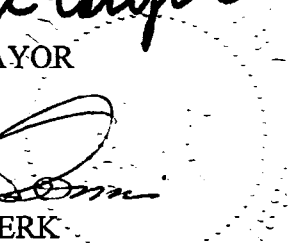
Read a second time this 11th day of September 2006

Read a third time this 11th day of September 2006

Reconsidered and adopted this 30th day of October 2006


MAYOR


CLERK



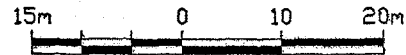
REFERENCE PLAN TO ACCOMPANY CITY OF BURNABY BYLAW NO. TO CLOSE AND REMOVE ROAD DEDICATION OF PARTS OF D.L. 32, GROUP 1, N.W.D.

PLAN BCP

Pursuant to Section 40, Community Charter and Section 120, Land Title Act.
B.C.G.S. 92G.026

Deposited in the Land Title Office at New Westminster, B.C., this day of _____, 2006.

Scale 1 : 750



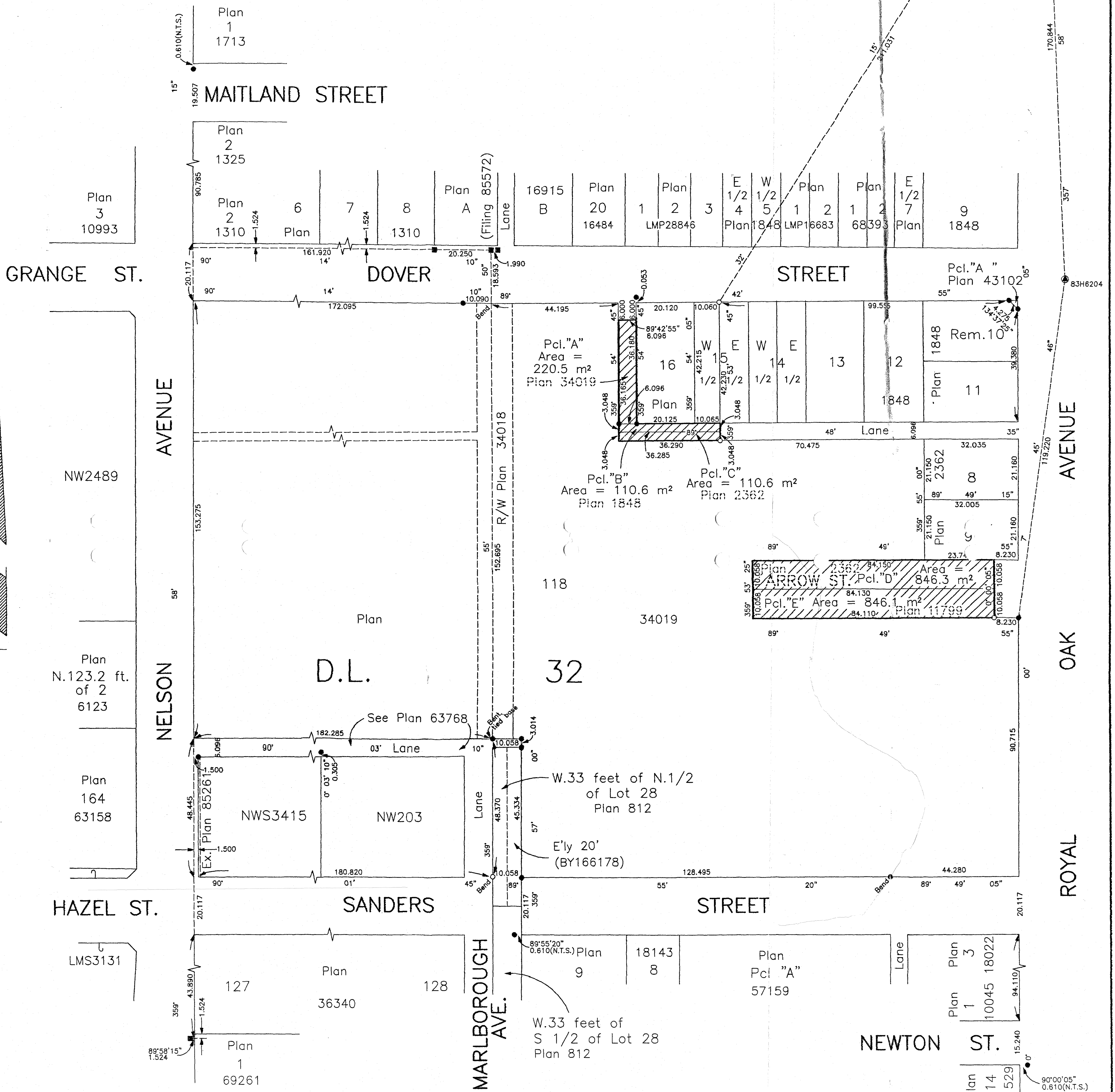
Integrated Survey Area No. 25, Burnaby, NAD'83 (CSRS). All distances are in metres. Grid bearings are derived from observations between geodetic control monuments 83H6204 and 86H1889. This plan shows horizontal ground-level distances except where otherwise noted. To compute grid distances, multiply ground-level distances by combined factor of 0.9995868.

Legend:

- denotes control monument found.
- denotes standard iron post found.
- denotes lead plug found.
- denotes standard iron post placed.
- m² denotes square metres.
- N.T.S. denotes Not To Scale

Book of Reference	
Road to be closed and road dedication removed	
Legal description	Area
Part of lane dedicated by Plan 34019.	220.5 m ²
Part of lane dedicated by Plan 1848.	110.6 m ²
Part of lane dedicated by Plan 2362.	110.6 m ²
Part of road dedicated by Plan 2362.	846.3 m ²
Part of road dedicated by Plan 11799.	846.1 m ²
All of D.L. 32, Group 1, N.W.D.	

Registrar
L.T.O. Ref. No. _____



The City of Burnaby
City Clerk _____ (Printed Name)
Witness as to above signatures _____ (Printed Name)
Address _____
Occupation _____

I, R.E. Petersen, a British Columbia Land Surveyor of Burnaby, in British Columbia, certify that I was present at and personally superintended the survey represented by this plan and that the survey and plan are correct. The field survey was completed on the 28th day of June, 2006. The plan was completed and checked, and the checklist filed under ECP#50646 on the 28th day of June, 2006.

R.E. Petersen
B.C.L.S.