

CITY OF BURNABY

BYLAW NO. 12134

A BYLAW to close and remove the dedication of
a certain portion of highway

WHEREAS pursuant to section 40 of the *Community Charter*, SBC 2003 and section 120 of the *Land Title Act* the Council may by bylaw close part of a highway to traffic and remove the dedication of that part of the highway;

AND WHEREAS the Council, before adopting this Bylaw, has caused the required statutory public notice of its intention to be given by advertisement;

AND WHEREAS the Council deems it expedient and in the public interest to stop up and close to traffic and remove the dedication of that portion of highway more particularly hereinafter described;

NOW THEREFORE the Council of the City of Burnaby ENACTS as follows:

1. This Bylaw may be cited as **BURNABY HIGHWAY CLOSURE BYLAW NO. 4, 2006.**
2. ALL AND SINGULAR that certain parcel or tract of land, situate, lying and being in the City of Burnaby, in the Province of British Columbia, more particularly known and described as all that portion of road in District Lots 2 and 4, Group 1, New Westminster District, dedicated by Plan 42377 containing 221m² (hereinafter called "the closed portion of road") shown outlined and described as Pcl "1" on Reference Plan prepared by Grant Butler, B.C.L.S., and deposited in the Land Title Office under Number BCP_____, a copy of which is hereunto annexed (hereinafter called "the plan") is hereby closed to all types of traffic.

3. The dedication of the closed portion of road as highway is removed.

Read a first time this 21st day of August 2006

Read a second time this 21st day of August 2006

Read a third time this 21st day of August 2006

Reconsidered and adopted this 2nd day of October 2006


MAYOR



CLERK

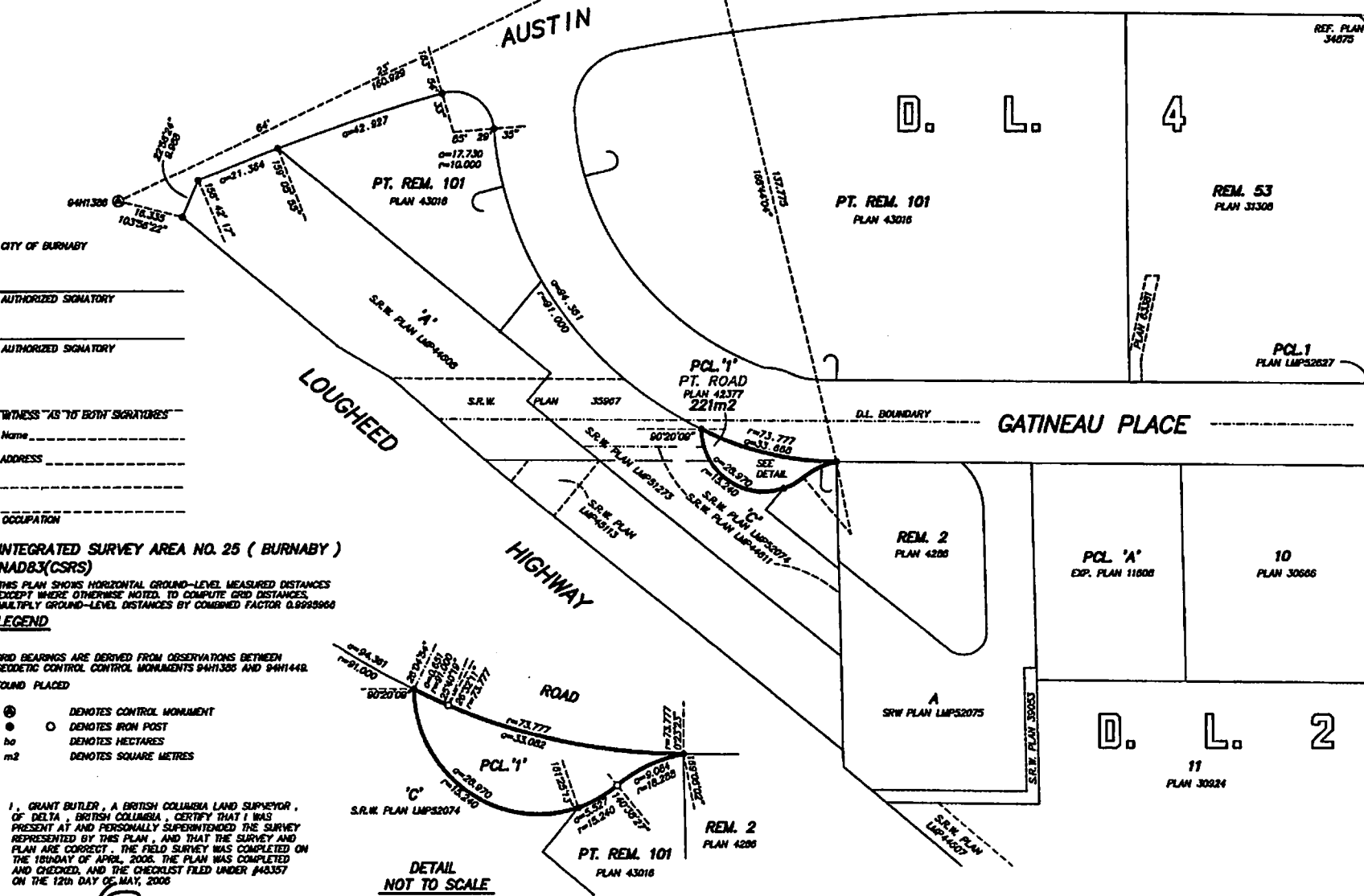
REFERENCE PLAN TO ACCOMPANY THE CITY OF BURNABY BYLAW NO. _____ TO REMOVE THE ROAD DEDICATION FOR THE ROAD DEDICATED BY PLAN 42377 DISTRICT LOTS 2 AND 4 GROUP 1 NEW WESTMINSTER DISTRICT

B.C.G.S. 92G.029 PURSUANT TO SECTION 120 OF THE LAND TITLE ACT AND SECTION 40 OF THE COMMUNITY CHARTER

DEPOSITED IN THE LAND TITLE OFFICE AT NEW WESTMINSTER, B.C., THIS _____ DAY OF _____, 2008

REGISTRAR

0 10 50 SCALE 1 : 750 DISTANCES ARE METRIC



CITY OF BURNABY
AUTHORIZED SIGNATORY
AUTHORIZED SIGNATORY
WITNESS AS TO BOTH SIGNATURES
Name
ADDRESS
OCCUPATION

INTEGRATED SURVEY AREA NO. 25 (BURNABY) NAD83(CSRS)

THIS PLAN SHOWS HORIZONTAL GROUND-LEVEL MEASURED DISTANCES EXCEPT WHERE OTHERWISE NOTED, TO COMPUTE GRID DISTANCES. MULTIPLY GROUND-LEVEL DISTANCES BY CORRECTION FACTOR 0.9999960

LEGEND

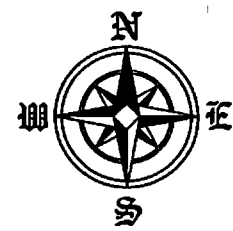
GRID BEARINGS ARE DERIVED FROM OBSERVATIONS BETWEEN GEODETIC CONTROL MONUMENTS 94H1305 AND 94H1448 FOUND PLACED

- DENOTES CONTROL MONUMENT
○ DENOTES IRON POST
ha DENOTES HECTARES
m2 DENOTES SQUARE METRES

I, GRANT BUTLER, A BRITISH COLUMBIA LAND SURVEYOR, OF DELTA, BRITISH COLUMBIA, CERTIFY THAT I WAS PRESENT AT AND PERSONALLY SUPERINTENDED THE SURVEY REPRESENTED BY THIS PLAN, AND THAT THE SURVEY AND PLAN ARE CORRECT. THE FIELD SURVEY WAS COMPLETED ON THE BOUNDARY OF APRIL, 2008. THE PLAN WAS COMPLETED AND CHECKED, AND THE CHECKLIST FILED UNDER #43357 ON THE 12th DAY OF MAY, 2008

Signature of Grant Butler

B.C.L.S.



THIS PLAN LIES WITHIN THE GREATER VANCOUVER REGIONAL DISTRICT

BUTLER, SUNDYACK & ASSOCIATES PROFESSIONAL LAND SURVEYORS 4 - 19089 - 94TH AVENUE SURREY, B.C. V4N 3S4 TEL: 604-513-9811 FAX: 604-513-2202 FILE: LRT208 DND: LRT208-43