

CITY OF BURNABY

BYLAW NO. 12111

**A BYLAW to close and remove the dedication of
certain portions of highway**

WHEREAS pursuant to section 40 of the *Community Charter*, SBC 2003 and section 120 of the *Land Title Act* the Council may by bylaw close part of a highway to traffic and remove the dedication of that part of the highway;

AND WHEREAS the Council, before adopting this Bylaw, has caused the required statutory public notice of its intention to be given by advertisement;

AND WHEREAS the Council deems it expedient and in the public interest to stop up and close to traffic and remove the dedication of those portions of highway more particularly hereinafter described;

NOW THEREFORE the Council of the City of Burnaby ENACTS as follows:

1. This Bylaw may be cited as **BURNABY HIGHWAY CLOSURE BYLAW NO. 3, 2006.**
2. ALL AND SINGULAR those certain parcels or tracts of land, situate, lying and being in the City of Burnaby, in the Province of British Columbia, more particularly known and described as all those portions of road in District Lot 95, Group 1, New Westminster District:
 - (a) dedicated as road by Plan 4277 containing 476.6 m²;
 - (b) dedicated as road by Plan 4277 containing 183.8 m²; and

that portion of road in District Lot 30, Group 1, New Westminster District:

- (a) dedicated as road by Plan 3036 containing 409.5 m²

(hereinafter called "the closed portions of road") shown outlined and described as Pcl. A, Pcl. B and Pcl. C on Reference Plan prepared by Mike E. Shaw, B.C.L.S., and deposited in the Land Title Office under Number BCP _____, a copy of which is hereunto annexed is hereby closed to all types of traffic.

3. The dedication of the closed portions of road as highway is removed.


Read a first time this 12TH day of JUNE 2006

Read a second time this 12TH day of JUNE 2006

Read a third time this 12TH day of JUNE 2006

Reconsidered and adopted this 24TH day of JULY 2006


MAYOR


CLERK

PLAN BCP

REPORTED IN THE LAND FILE OFFICE
AT NEW BEDFORD, N.C.
THE _____ DAY OF _____

2024 RELEASE




SCALE 1:500

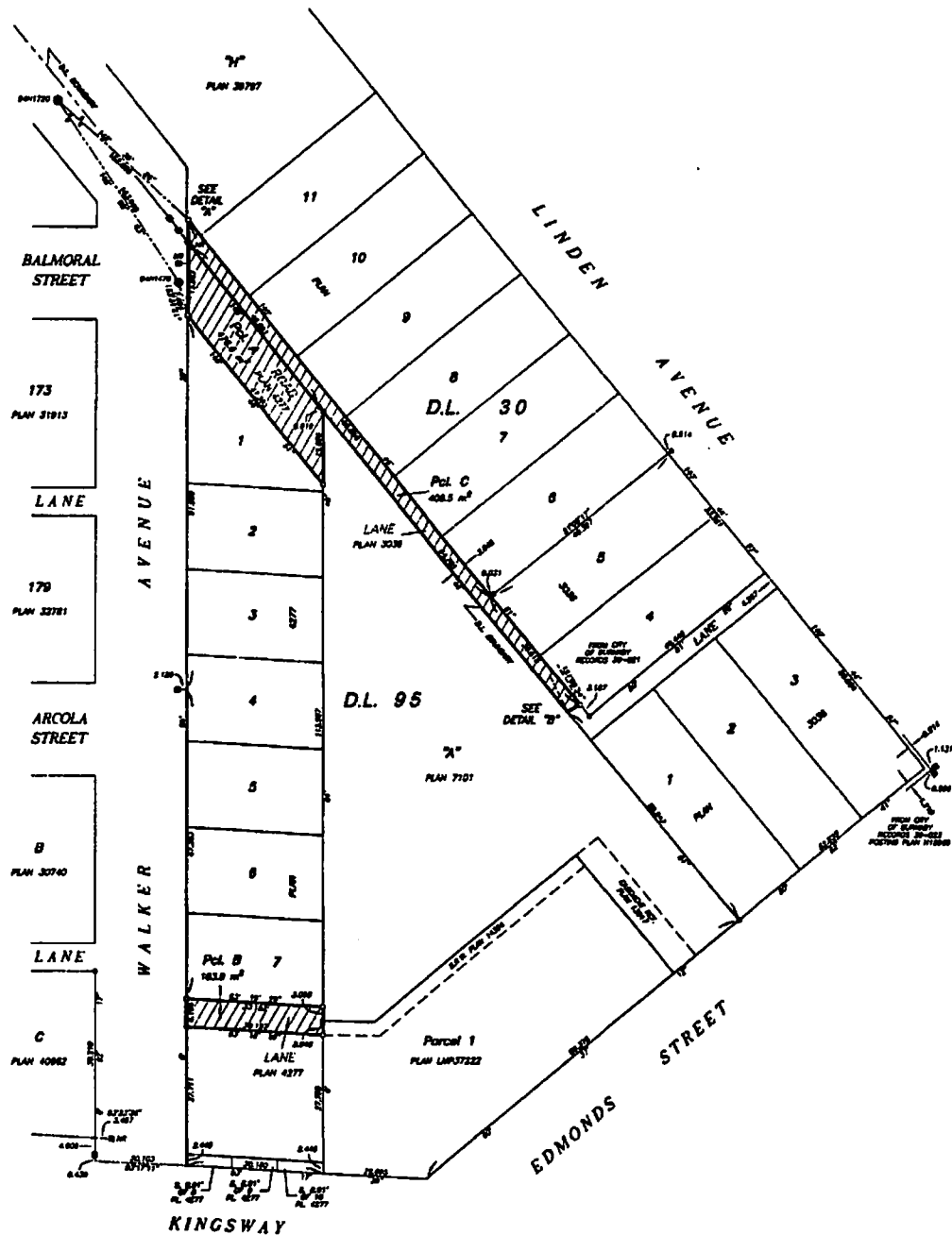
ALL DISTANCES ARE IN METRES

THIS PLAN SHOWS PROPOSED-LEVEL MEASURED DISTANCES
PRIOR TO CONSTRUCTION OF WEAL (CO-ORDINATES
MEASURED BY COMMON SCALE FACTOR 0.000004)

END BEHAVIOR ARE DERIVED FROM OBSERVATIONS
BETWEEN CONTROL, MORGANITE-POLYMER AND BART-CPD

- - SPOKE CONTROL MOUNTED FORWARD
- - SPOKE STANDARD NON POST FRAME
- - SPOKE LEAD PLUG FORWARD
- - SPOKE STANDARD NON POST PLACED
- - SPOKE LEAD PLUG PLACED
- - SPOKE DESTROYED
- NR - SPOKE NO RECORD
- ZZ - SPOKE PORTION OF ROAD TO BE CLOSED

BOOK OF REFERENCE (ROAD TO BE CLOSED)		
AVACT	DESCRIPTION	AREA
Pol A	ROAD PLAN 4277	476.6 m ²
Pol B	LANE PLAN 4277	163.6 m ²
Pol C	LANE PLAN 3036	606.9 m ²
	TOTAL	1247.1 m ²



I, WILLIAM E. SHAW, A BRITISH COLONIAL LAND SURVEYOR,
OF LANDLET, IN BRITISH COLONIA, CERTIFY THAT I
WAS PRESENT AT AND PERSONALLY SUPERINTENDED THE
SURVEY REPRESENTED BY THIS PLAN, AND THAT THE SURVEY
AND PLAN ARE CORRECT. THE SURVEY WAS COMPLETED
ON THE 28 DAY OF NOV, 1908. THE PLAN WAS
COMPLETED AND CHECKED, AND THE CHECKLIST FILLED UNDER
A. NOVEMBER, 1908. THE DAY OF NOV, 1908.

File E-Blue BCLB

BONNETT & ASSOCIATES
S.C. LAND SURVEYORS
201-2647 1304 STREET
SUMMIT, S.C.
PHONE : 853-881-8717

DRAWING # 2000-7
FILE # 2000-7
DATE : MAY 18, 2000

DETAIL "A"
NOT TO SCALE

DETAIL "B"
NOT TO SCALE

THE CITY OF BATHURST

NAME _____
 TITLE _____
 ADDRESS _____
 CITY _____
 STATE _____

THIS PLAN LIES WITHIN THE GREATER VANCOUVER REGIONAL DISTRICT