

CITY OF BURNABY

BYLAW NO. 12050

A BYLAW to close and remove the dedication of
certain portions of highway

WHEREAS pursuant to section 40 of the *Community Charter*, SBC 2003 and section 120 of the *Land Title Act* the Council may by bylaw close part of a highway to traffic and remove the dedication of that part of the highway;

AND WHEREAS the Council, before adopting this Bylaw, has caused the required statutory public notice of its intention to be given by advertisement;

AND WHEREAS the Council deems it expedient and in the public interest to stop up and close to traffic and remove the dedication of those portions of highway more particularly hereinafter described;

NOW THEREFORE the Council of the City of Burnaby ENACTS as follows:

1. This Bylaw may be cited as **BURNABY HIGHWAY CLOSURE BYLAW NO. 1, 2006.**

2. ALL AND SINGULAR those certain parcels or tracts of land, situate, lying and being in the City of Burnaby, in the Province of British Columbia, more particularly known and described as all those portions of road in District Lot 124, Group 1, New Westminster District:
 - (a) dedicated as lane by Plan 1543 containing 361.5 m²,
 - (b) dedicated as road by Plan 1543 containing 0.144 ha,
 - (c) dedicated as lane by Plan 1543 containing 527.2 m², and
 - (d) dedicated as road and lane by Plan 1543 containing 0.764 ha

(hereinafter called "the closed portions of road") shown outlined and described as Parcel A, Parcel B, Parcel C and Parcel D on Reference Plan prepared by H. David Liddle, B.C.L.S., and deposited in the Land Title Office under Number BCP _____, a copy of which is hereunto annexed, are hereby closed to all types of traffic.

3. The dedication of the closed portions of road as highway is removed.


Read a first time this 6TH day of FEBRUARY 2006

Read a second time this 6TH day of FEBRUARY 2006

Read a third time this 6TH day of FEBRUARY 2006

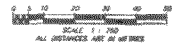
Reconsidered and adopted this 20TH day of MARCH 2006


MAYOR


CLERK

REFERENCE PLAN TO ACCOMPANY
CITY OF BURNABY HIGHWAY CLOSURE BYLAW
OF PORTIONS OF DISTRICT LOT 124, GROUP 1,
SHOWN ROAD ON PLAN 1543
NEW WESTMINSTER DISTRICT

B.C.G.S. 826.026



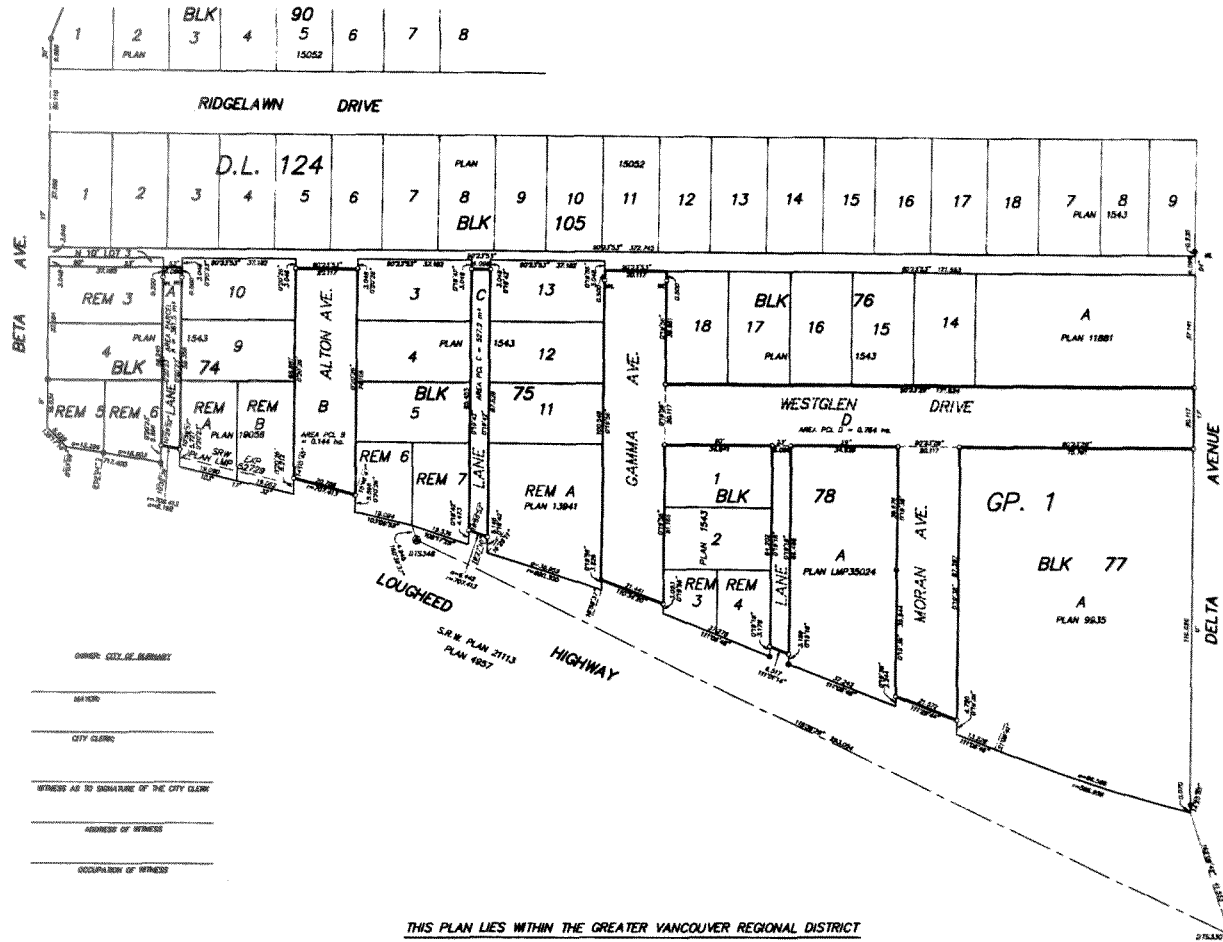
PURSUANT TO SECTION 120, LAND TITLE ACT
AND SECTION 40 OF THE COMMUNITY CHARTER

PLAN BCP

DEPOSITED BY THE LAND TITLE OFFICE
AT NEW WESTMINSTER, B.C.
THIS DAY OF _____, 2008.

REGISTRAR

REF:



LEGEND :

- ⊙ INDICATES CONTROL MEASUREMENT POINTS
- ⊙ INDICATES STAKEHOLD FROM POST PLACED
- ⊙ INDICATES STAKEHOLD FROM POST PLACED
- ⊙ INDICATES WITNESS

ONE BURNABY ARE DIVIDED FROM COORDINATIONS BETWEEN
CONTROL MEASUREMENTS 015200 AND 015204
INTEGRATED SURVEY AREA 1000, CITY OF BURNABY.
DISTANCE SURVEY ARE GROUND LEVEL MEASURED DISTANCES
PRIOR TO COMPLETION OF D.L. 124. CO-ORDINATES ARE ONLY
BY THE MEAN CORRECTION FACTOR (0.000004) (NAD 83 C.S.B.S.).

MURRAY & ASSOCIATES
201-12668 BURNABY AVENUE
BURNABY, B.C.
V5C 3K3
(604) 582-3198

OWNER: CITY OF BURNABY
WITNESS
CITY CLERK
WITNESS AS TO SIGNATURE OF THE CITY CLERK
ADDRESS OF WITNESS
OCCUPANCY OF WITNESS

THIS PLAN LIES WITHIN THE GREATER VANCOUVER REGIONAL DISTRICT
(CITY OF BURNABY)

I, H. DAVID LEWIS, A BURNABY COLUMBIA (LAND SURVEYOR)
OF BURNABY, B.C., DO HEREBY CERTIFY THAT
I WAS PRESENT AT AND PERSONALLY SUPERVISED THE
SURVEY REPRESENTED BY THIS PLAN AND THAT THE SURVEY
AND PLAN ARE CORRECT.
THE FIELD SURVEY WAS COMPLETED ON THE
21st DAY OF DECEMBER, 2008.
THE PLAN WAS COMPLETED AND CHECKED, AND THE
CHECKLIST FILED UNDER # 00000004
ON THE 21st DAY OF JANUARY, 2009.

H. David Lewis
H. DAVID LEWIS
FILE: 8020-04(b)