

CITY OF BURNABY

BYLAW NO. 12018

A BYLAW to close and remove the dedication of
certain portions of highway

WHEREAS pursuant to section 40 of the *Community Charter*, SBC 2003 and section 120 of the *Land Title Act* the Council may by bylaw close part of a highway to traffic and remove the dedication of that part of the highway;

AND WHEREAS the Council, before adopting this Bylaw, has caused the required statutory public notice of its intention to be given by advertisement;

AND WHEREAS the Council deems it expedient and in the public interest to stop up and close to traffic and remove the dedication of those portions of highway more particularly hereinafter described;

NOW THEREFORE the Council of the City of Burnaby ENACTS as follows:

1. This Bylaw may be cited as **BURNABY HIGHWAY CLOSURE BYLAW NO. 6, 2005.**

2. ALL AND SINGULAR those certain parcels or tracts of land, situate, lying and being in the City of Burnaby, in the Province of British Columbia, more particularly known and described as all those portions of road in District Lot 69, Group 1, New Westminster District:

- (a) dedicated as road by Plan 1321 containing 658.3 m², and
- (b) dedicated as road by Plan 1321 containing 378.7 m²

(hereinafter called "the closed portions of road") shown outlined and described as Parcels "D" and "E", respectively on Reference Plan prepared by M.I. Potzold, B.C.L.S., and deposited in the Land Title Office under Number BCP_____, a copy of which is hereunto annexed, are hereby closed to all types of traffic.

3. The dedication of the closed portions of road as highway is removed.

Read a first time this 28TH day of NOVEMBER 2005

Read a second time this 28TH day of NOVEMBER 2005

Read a third time this 28TH day of NOVEMBER 2005

Reconsidered and adopted this 9TH day of JANUARY 2006


MAYOR



CLERK

REFERENCE PLAN TO ACCOMPANY THE CITY OF BURNABY HIGHWAY CLOSURE
 BYLAW NO. " " TO REMOVE THE ROAD & LANE DEDICATED BY
 PLAN 1321, D.L. 69, GP.1, N.W.D. (PURSUANT TO SECTION 120, L.T.A.)

PLAN BCP"

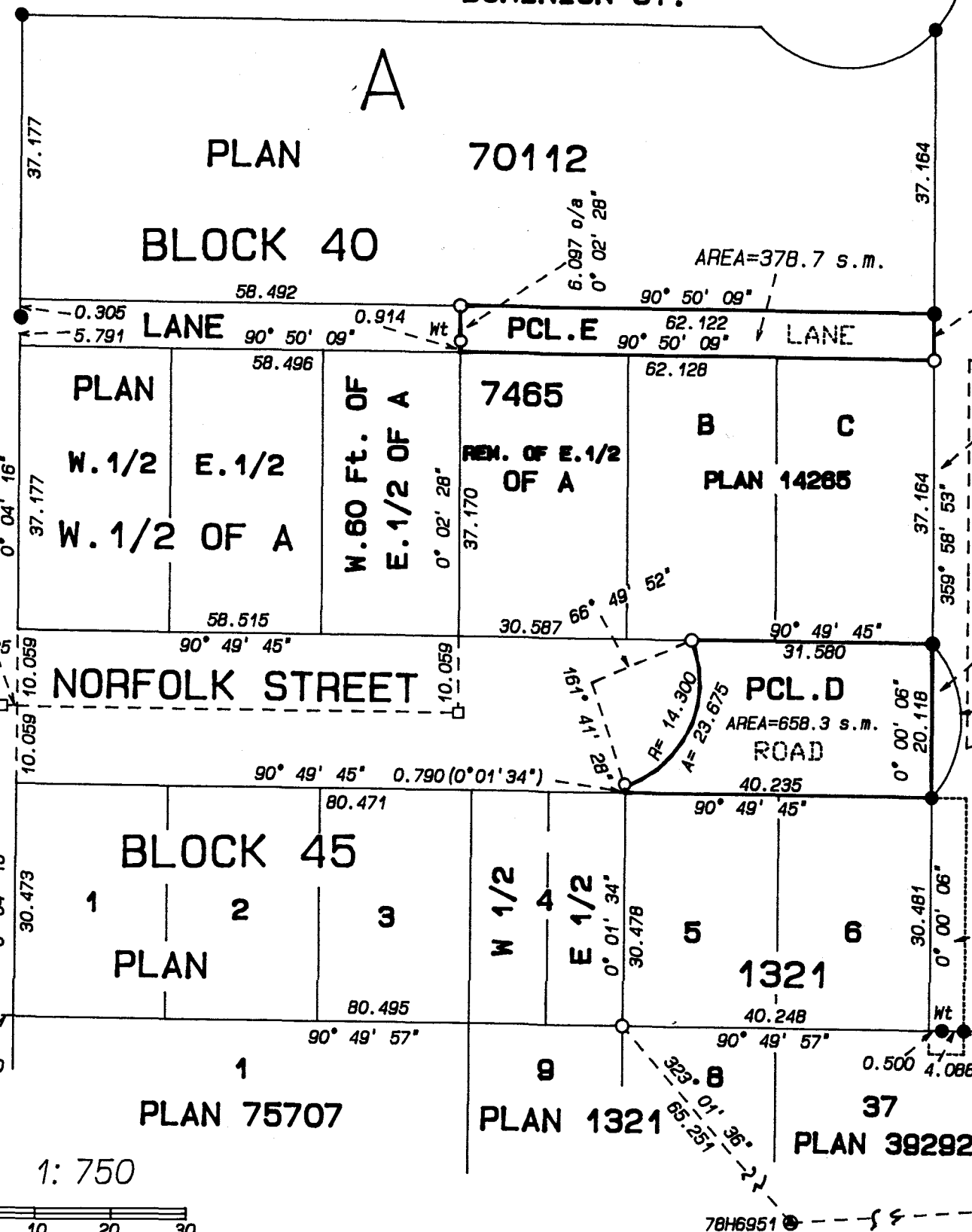
DEPOSITED IN THE LAND TITLE OFFICE IN NEW WESTMINSTER,
 B.C., THIS DAY OF 2005.

B.C.G.S. 926.025

DOMINION ST.



SMITH AVENUE



SRW PLAN 84316
 SRW PLAN 38293
 SRW PLAN 84316

LEGEND

- Standard Iron Post Set
- Standard Iron Post Found
- Lead Plug Placed
- ⊙ Control Monument Found
- Wt denotes witness

INTEGRATED SURVEY AREA NO. 25 CITY OF BURNABY
 GRID BEARINGS ARE DERIVED FROM MONUMENTS 78H6951 AND 81H4574
 THIS PLAN SHOWS GROUND LEVEL MEASURED DISTANCES. PRIOR
 TO COMPUTATION OF U.T.M. CO-ORDINATES MULTIPLY BY COMBINED
 FACTOR OF 0.99959415
 CITY OF BURNABY

 AUTHORIZED SIGNATORY PRINTED NAME

 AUTHORIZED SIGNATORY PRINTED NAME

 WITNESS TO ABOVE SIGNATURES PRINTED NAME

 ADDRESS

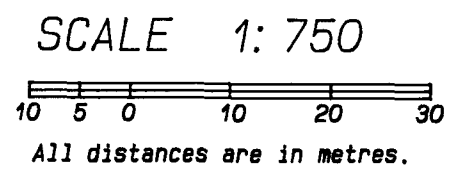
 OCCUPATION

I, M.I. POTZOLD, A BRITISH COLUMBIA LAND SURVEYOR
 OF VANCOUVER, B.C. CERTIFY THAT I WAS PRESENT AT AND
 PERSONALLY SUPERINTENDED THE SURVEY REPRESENTED
 BY THIS PLAN AND THAT THE SURVEY AND THE PLAN ARE
 CORRECT. THE FIELD SURVEY WAS COMPLETED ON THE 3rd
 DAY OF OCTOBER, 2005. THE PLAN WAS COMPLETED AND CHECKED,
 AND THE CHECKLIST FILED UNDER # ECP40047 ON THE 9th
 DAY OF NOVEMBER, 2005

[Signature]
 B.C.L.S.

M.I. POTZOLD, B.C.L.S., C.L.S., B.Sc.
 5605 INVERNESS ST., VAN., B.C., V5W3P4
 PH. 604-327-2453

FILE NO. 05-800



THIS PLAN LIES WITHIN THE GREATER VANCOUVER REGIONAL DISTRICT