

CITY OF BURNABY

BYLAW NO. 12017

A BYLAW to close and remove the dedication of
certain portions of highway

WHEREAS pursuant to section 40 of the *Community Charter*, SBC 2003 and section 120 of the *Land Title Act* the Council may by bylaw close part of a highway to traffic and remove the dedication of that part of the highway;

AND WHEREAS the Council, before adopting this Bylaw, has caused the required statutory public notice of its intention to be given by advertisement;

AND WHEREAS the Council deems it expedient and in the public interest to stop up and close to traffic and remove the dedication of those portions of highway more particularly hereinafter described;

NOW THEREFORE the Council of the City of Burnaby ENACTS as follows:

1. This Bylaw may be cited as **BURNABY HIGHWAY CLOSURE BYLAW NO. 5, 2005.**

2. ALL AND SINGULAR those certain parcels or tracts of land, situate, lying and being in the City of Burnaby, in the Province of British Columbia, more particularly known and described as all those portions of road in District Lot 119, Group 1, New Westminster District:

- (a) dedicated as road by Plan 206 containing 0.425 ha, and
- (b) dedicated as road by Plan 206 containing 762.5m².

and all those portions of road in District Lot 70, Group 1, New Westminster District:

- (c) dedicated as road by Plan 1413 containing 0.230 ha,
- (d) dedicated as road by Plan 1413 containing 460.5m²,
- (e) dedicated as road by Plan LMP27396 containing 225.8m²,
- (f) dedicated as road by Plan LMP29239 containing 23.7m²,
- (g) dedicated as road by Plan 71013 containing 210.9m²,
- (h) dedicated as road by Plan 1397 containing 323.7m²,
- (i) dedicated as road by Plan 13400 containing 134.5 m²,
- (j) dedicated as road by Plan 51872 containing 0.598 ha, and
- (k) dedicated as road by Plan 1407 containing 909.2m².

(hereinafter called "the closed portions of road") shown outlined and described as Parcels "A" to "K", respectively on Reference Plan prepared by Mike E. Shaw, B.C.L.S., and deposited in the Land Title Office under Number BCP _____, a copy of which is hereunto annexed, are hereby closed to all types of traffic.

3. The dedication of the closed portions of road as highway is removed.

Read a first time this 28TH day of NOVEMBER 2005

Read a second time this 28TH day of NOVEMBER 2005

Read a third time this 28TH day of NOVEMBER 2005

Reconsidered and adopted this 9TH day of JANUARY 2006

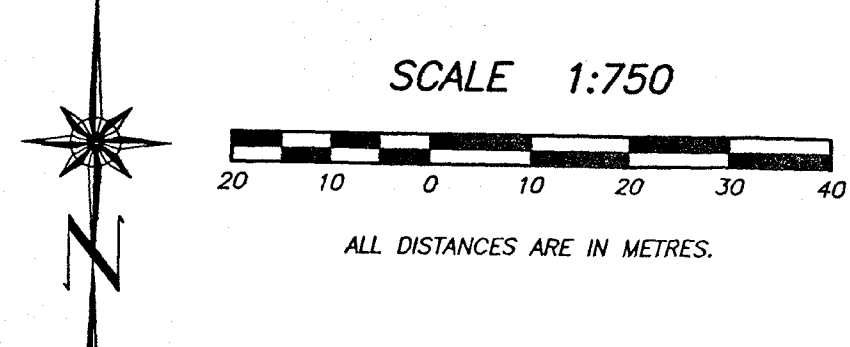

MAYOR


CLERK

REFERENCE PLAN TO ACCOMPANY THE CITY OF BURNABY ROAD CLOSING AND REMOVAL OF ROAD DEDICATION BY-LAW NO. OF
 - PORTIONS OF ROAD DEDICATED BY PLAN 206, DISTRICT LOT 119;
 - PORTIONS OF ROAD DEDICATED BY PLAN 1413, DISTRICT LOT 70;
 - PORTION OF ROAD DEDICATED BY PLAN LMP27396, DISTRICT LOT 70;
 - PORTION OF ROAD DEDICATED BY PLAN LMP29239, DISTRICT LOT 70;
 - PORTION OF ROAD DEDICATED BY PLAN 71013, DISTRICT LOT 70;
 - PORTION OF ROAD DEDICATED BY PLAN 1397, DISTRICT LOT 70;
 - PORTION OF ROAD DEDICATED BY PLAN 13400, DISTRICT LOT 70;
 - PORTION OF ROAD DEDICATED BY PLAN 1407, DISTRICT LOT 70;
 - PORTION OF ROAD DEDICATED BY PLAN 51872, DISTRICT LOT 70;
 ALL OF GROUP 1, NEW WESTMINSTER DISTRICT

PURSUANT TO SECTION 120, LAND TITLE ACT AND SECTION 40, COMMUNITY CHARTER
 B.C.G.S. 92G.025

PLAN BCP
 DEPOSITED IN THE LAND TITLE OFFICE
 OF NEW WESTMINSTER, B.C.
 THIS DAY OF _____
 DEPUTY REGISTRAR



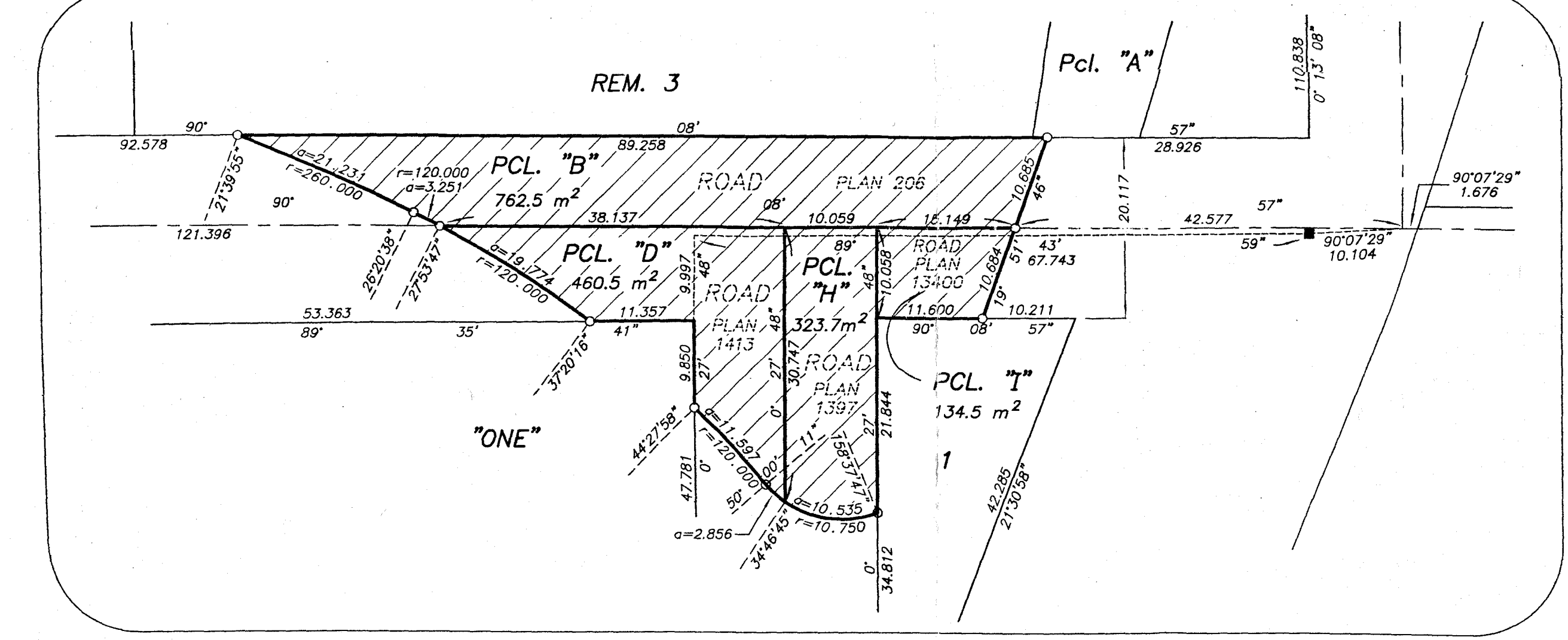
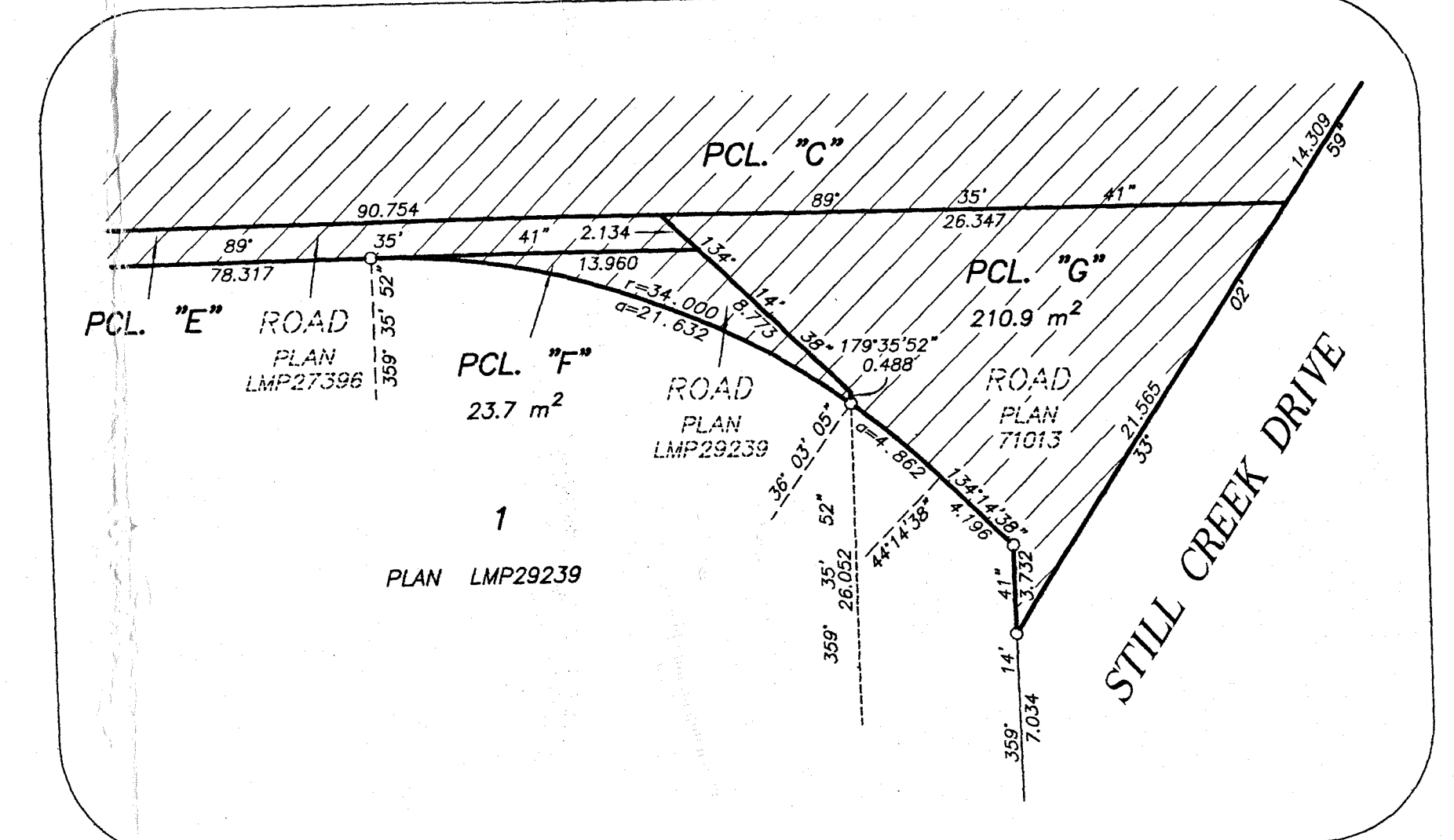
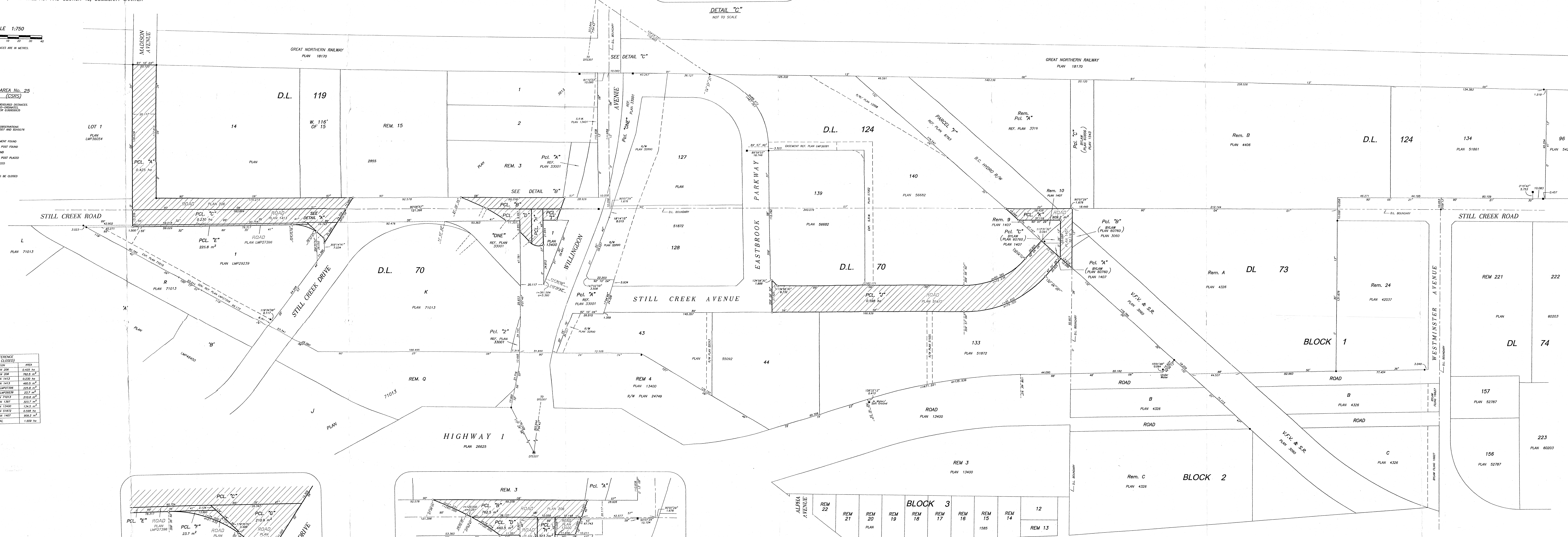
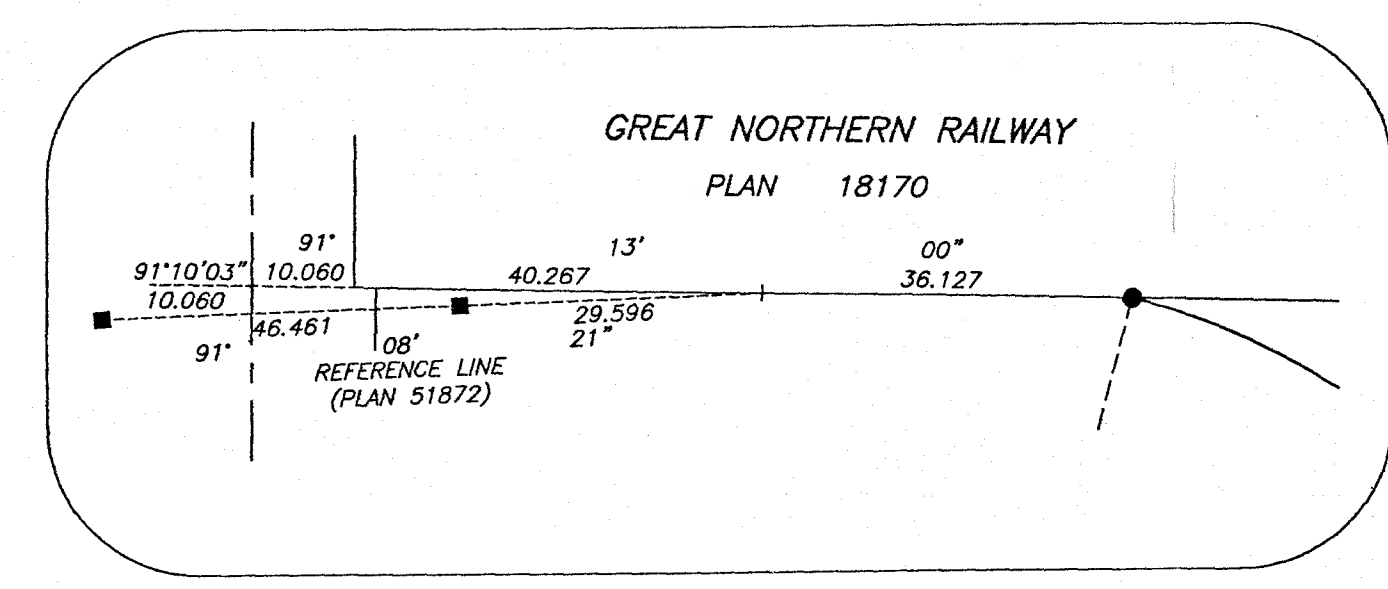
INTEGRATED SURVEY AREA No. 25
 (BURNABY) NAD-83 (CSRS)

THIS PLAN SHOWS GROUND-LEVEL MEASURED DISTANCES PRIOR TO CONSTRUCTION OF 1/4" 20-DIVISIONS. MULTIPLY BY DENOMINATOR SCALE FACTOR 0.99998333.

LEGEND
 GROUND BEARINGS ARE DERIVED FROM OBSERVATIONS BETWEEN CONTROL MONUMENT STIPES AND 8000014

- - DENOTES CONTROL MONUMENT FOUND
- - DENOTES STAKE/IRON POST FOUND
- - DENOTES LEAD PEG FOUND
- - DENOTES STAKE/IRON POST PLACED
- - DENOTES LEAD PEG PLACED
- - DENOTES NO RECORD
- - DENOTES PORTION OF ROAD TO BE CLOSED

PARCEL	DESCRIPTION	AREA
PCL A	ROAD PLAN 206	0.425 m ²
PCL B	ROAD PLAN 206	782.5 m ²
PCL C	ROAD PLAN 1413	2,250 m ²
PCL D	ROAD PLAN 1413	480.5 m ²
PCL E	ROAD PLAN LMP27396	225.8 m ²
PCL F	ROAD PLAN LMP29239	23.7 m ²
PCL G	ROAD PLAN 71013	210.6 m ²
PCL H	ROAD PLAN 1397	225.1 m ²
PCL I	ROAD PLAN 13400	134.5 m ²
PCL J	ROAD PLAN 51872	0.508 m ²
PCL K	ROAD PLAN 1407	89.2 m ²
TOTAL		1,559 m ²



I, WAVE E. SHAW, A BRITISH COLUMBIA LAND SURVEYOR, HAVE PREPARED AND PERSONALLY SUPERINTENDED THE SURVEY REPRESENTED BY THIS PLAN, AND THE BOUNDARY AND PLAN ARE CORRECT TO THE BEST OF MY KNOWLEDGE AND BELIEF. I HEREBY CERTIFY THAT THIS PLAN WAS COMPLETED AND FORWARDED TO THE REGISTRAR OF LANDS ON THE 15th DAY OF NOVEMBER, 2006.
 WAVE E. SHAW S.C.L.S.

SHAW & ASSOCIATES
 P.O. BOX 240000
 4500 16th Avenue
 Burnaby, BC V5A 4K4
 PHONE: 522-0717
 FAX: 522-0714
 WWW: WWW.SHAWSURVEYORS.COM

THIS PLAN LIES WITHIN THE
 GREATER VANCOUVER REGIONAL DISTRICT

THE CITY OF BURNABY
 WARD
 CLERK
 WITNESS AS TO BIRTH SIGNATURES
 OCCUPATION OF WITNESS
 ADDRESS OF WITNESS