

CITY OF BURNABY

BYLAW NO. 11988

A BYLAW to dedicate certain lands within the City for public parks
at Burnaby Fraser Foreshore Park, Capitol Hill Conservation
Area, Burnaby Mountain Conservation Area, Squint Lake
Park and Byrne Creek Ravine Park

WHEREAS section 30 of the *Community Charter* empowers Council, by an affirmative vote of at least 2/3 of all the members of Council, to dedicate for a public purpose real property owned by the City;

NOW THEREFORE the Council of the City of Burnaby ENACTS as follows:

1. This Bylaw may be cited as **BURNABY PARK DEDICATION BYLAW 2005**.
2. There is hereby dedicated for park and recreation uses of the public that real property owned by the City and more particularly described in Schedules A to E inclusive.

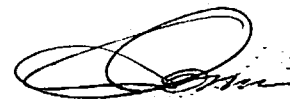
Read a first time this 3RD day of OCTOBER 2005

Read a second time this 3RD day of OCTOBER 2005

Read a third time this 3RD day of OCTOBER 2005

Reconsidered and adopted by an affirmative vote of at least two-thirds of all the members of Council 12TH day of DECEMBER 2005


MAYOR


CLERK

SCHEDULE A

BURNABY FRASER FORESHORE PARK

PARCEL IDENTIFIER:

026-408-805

LEGAL DESCRIPTION:

40.3 ha portion of Lot 1, District Lot 167, Group 1, New Westminster District, Plan BCP19147 shown outlined on sketch prepared by Gary N. Holme, B.C.L.S., dated August 4th, 2005, attached hereto marked Exhibit #1

SCHEDULE B

CAPITOL HILL CONSERVATION AREA

PARCEL IDENTIFIER:

LEGAL DESCRIPTION:

012-143-308

Westerly 50 Feet Lot 18, Block 34, District Lot 189, Group 1, New Westminster District, Plan 4953 having a frontage of 50 Feet on the Road lying North of Lot and A frontage of 50 Feet on the Lane lying South of Lot and adjoining Lot 17

002-634-775

Lot 1, District Lot 189, Group 1, New Westminster District, Plan 5932

011-184-019

Lot 3, District Lot 189, Group 1, New Westminster District, Plan 5932

009-570-454

Lot "A", District Lots 188, 189 and 218, Group 1, New Westminster District, Plan 11727

SCHEDULE C

BURNABY MOUNTAIN CONSERVATION AREA

PARCEL IDENTIFIER:

LEGAL DESCRIPTION:

002-568-683	The West Half of Lot 15, Block 16, District Lot 208, Group 1, New Westminster District, Plan 2501
002-568-659	The East Half of Lot 15, Block 16, District Lot 208, Group 1, New Westminster District, Plan 2501
002-622-050	Lot 45, District Lot 138, Group 1, New Westminster District, Plan 1256
002-622-068	Lot 47, District Lot 138, Group 1, New Westminster District, Plan 1256
002-622-076	Lot 51, District Lot 138, Group 1, New Westminster District, Plan 1256
012-817-287	North Half Lot 19, Block 17, District Lot 208, Group 1, New Westminster District, Plan 2501

SCHEDULE D

SQUINT LAKE PARK

PARCEL IDENTIFIER:

003-121-381

LEGAL DESCRIPTION:

Lot 4, District Lots 137 and 138, Group 1, New
Westminster District, Plan 50726

SCHEDULE E

BYRNE CREEK RAVINE PARK

PARCEL IDENTIFIER:

026-246-813

LEGAL DESCRIPTION:

Lot 1, District Lot 155A, Group 1, New Westminster
District, Plan BCP15342

EXHIBIT #1

Exhibit #1

PLAN OF PART OF LOT 1, D.L. 167, GROUP 1, N.W.D., PLAN BCP 19147;
TO ACCOMPANY CITY OF BURNABY PARK DEDICATION BYLAW NO. _____

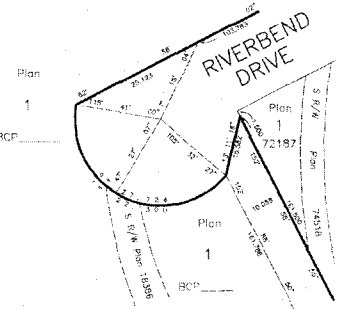
B.C.G.S. 926.026

Scale 1 : 2500

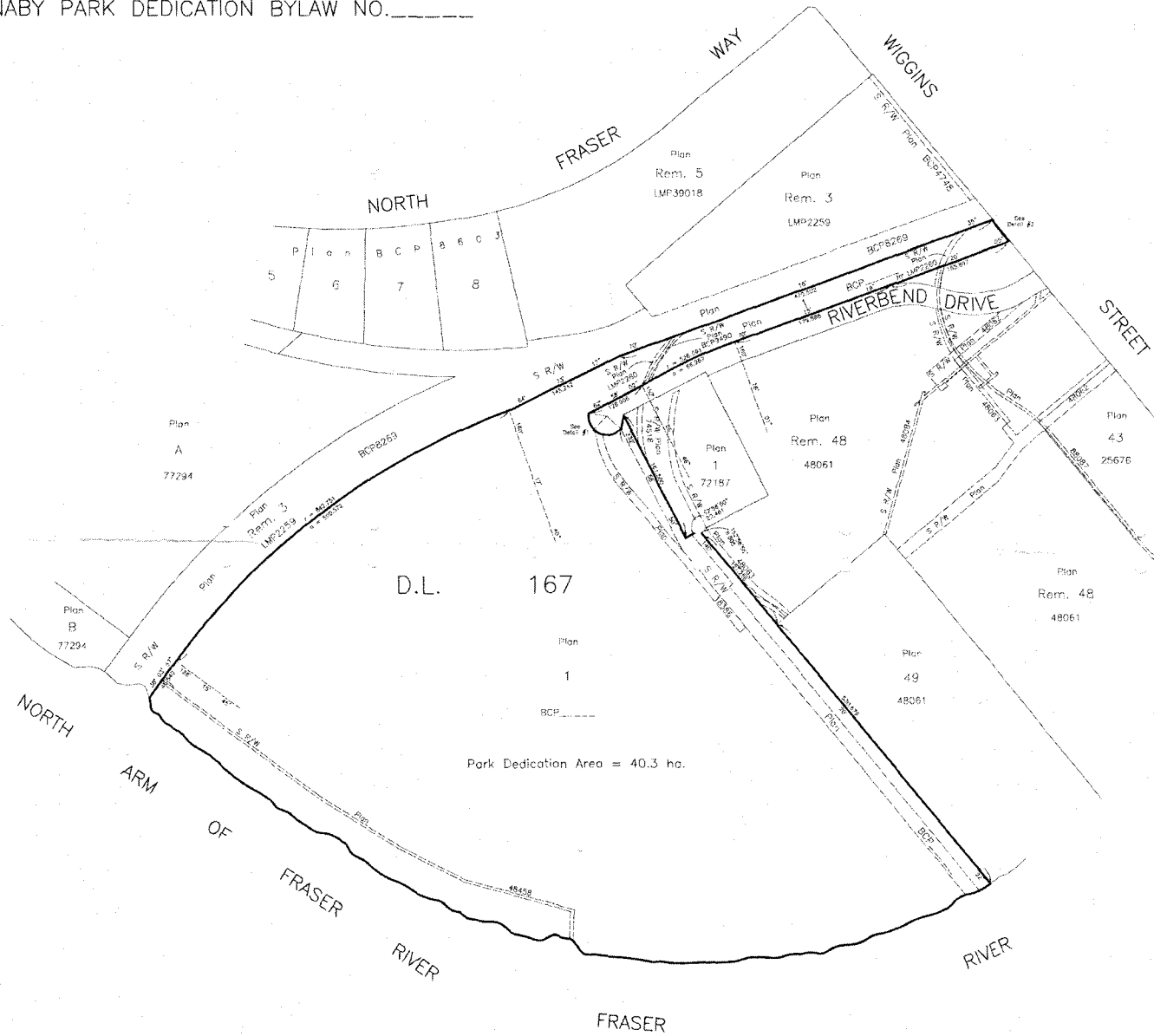
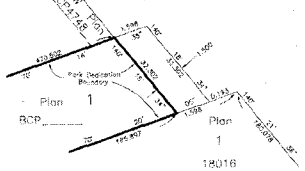


All distances are in metres.
Bearings are astronomic and are derived from Plan BCP _____

Detail #1
(Not To Scale)



Detail #2
(Not To Scale)



Park Dedication Area = 40.3 ha.

