

**CITY OF BURNABY**

**BYLAW NO. 11361**

A BYLAW to amend Bylaw No. 4742, being  
Burnaby Zoning Bylaw 1965

WHEREAS application for rezoning has been made to the Council;

AND WHEREAS the Council has held a public hearing thereon after duly giving notice of the hearing as prescribed by sections 892 and 893 of the *Local Government Act*, R.S.B.C. 1996;

NOW THEREFORE the Council of the City of Burnaby ENACTS as follows:

1. This Bylaw may be cited as **BURNABY ZONING BYLAW 1965, AMENDMENT BYLAW NO. 11, 2002.**
2. The map (hereinafter called "Map 'A'") attached to and forming an integral part of Bylaw No. 4742, being Burnaby Zoning Bylaw 1965, and designated as the Official Zoning Map of the City of Burnaby, is hereby amended according to the Map (hereinafter called "Map 'B'"), marginally numbered R.Z. 3312 annexed to this Bylaw, and in accordance with the explanatory legend, notations, references and boundaries designated, described, delimited and specified in particularity shown upon said Map 'B', and the various boundaries and districts shown upon said Map 'B', respectively are an amendment of and in substitution for the respective districts, designated and marked on said Map 'A' insofar as the same are changed, modified or varied thereby, and the said Map 'A' shall be deemed to be and is hereby declared to be amended accordingly and the said Map 'B' is hereby declared to be and shall form an integral part of said Map 'A' as if originally incorporated therein and shall be interpreted accordingly.


Read a first time this 8<sup>TH</sup> day of APRIL 2002

Read a second time this 6<sup>TH</sup> day of MAY 2002

Read a third time 29<sup>TH</sup> day of MAY 2006

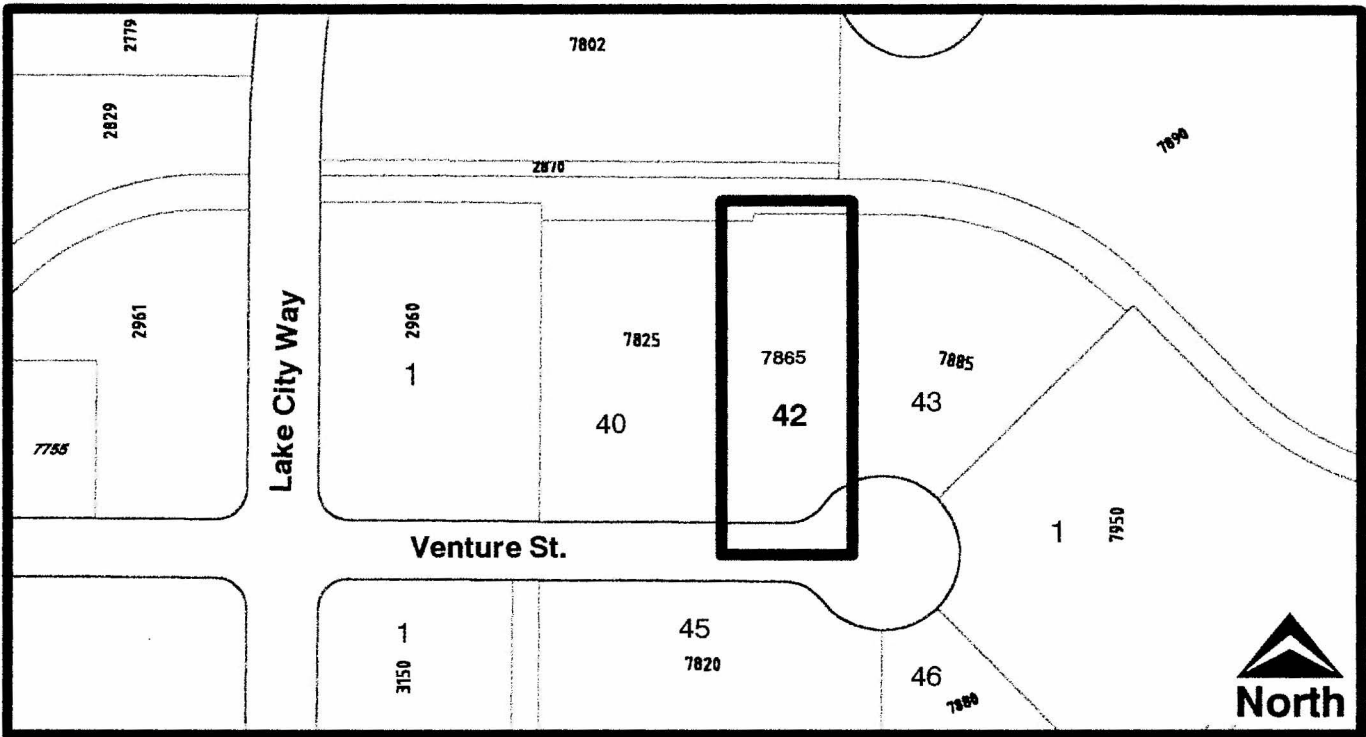
Reconsidered and adopted this 29<sup>TH</sup> day of MAY 2006

  
MAYOR

  
CLERK

**BYLAW NUMBER 11361 BEING A BYLAW TO AMEND BYLAW NUMBER 4742 BEING BURNABY ZONING BYLAW 1965**

**LEGAL:** Portion of Lot 42, D.L. 59, Group 1, NWD Plan 30505



**THE AREA(S) SHOWN ABOVE OUTLINED IN BLACK ( — ) IS (ARE) REZONED**

**FROM:** M3 Heavy Industrial District

**TO:** M3r Heavy Industrial District



**Planning And Building Department**

**Scale:** N.T.S.

**Drawn By:** J.P.C.

**Date:** April 2002

**OFFICIAL ZONING MAP**  
**Map "B"**

**NO.REZ. 3312**