

CITY OF BURNABY

BYLAW NO. 11360

A BYLAW to amend Bylaw No. 4742, being
Burnaby Zoning Bylaw 1965

WHEREAS application for rezoning has been made to the Council;

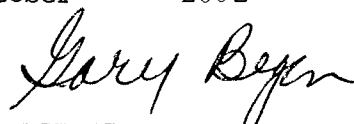
AND WHEREAS the Council has held a public hearing thereon after duly giving notice of the hearing as prescribed by sections 892 and 893 of the *Local Government Act*, R.S.B.C. 1996;

NOW THEREFORE the Council of the City of Burnaby ENACTS as follows:

1. This Bylaw may be cited as **BURNABY ZONING BYLAW 1965, AMENDMENT BYLAW NO. 10, 2002.**

2. The map (hereinafter called "Map 'A'") attached to and forming an integral part of Bylaw No. 4742, being Burnaby Zoning Bylaw 1965, and designated as the Official Zoning Map of the City of Burnaby, is hereby amended according to the Map (hereinafter called "Map 'B'"), marginally numbered R.Z. 3311 annexed to this Bylaw, and in accordance with the explanatory legend, notations, references and boundaries designated, described, delimited and specified in particularity shown upon said Map 'B', and the various boundaries and districts shown upon said Map 'B', respectively are an amendment of and in substitution for the respective districts, designated and marked on said Map 'A' insofar as the same are changed, modified or varied thereby, and the said Map 'A' shall be deemed to be and is hereby declared to be amended accordingly and the said Map 'B' is hereby declared to be and shall form an integral part of said Map 'A' as if originally incorporated therein and shall be interpreted accordingly.

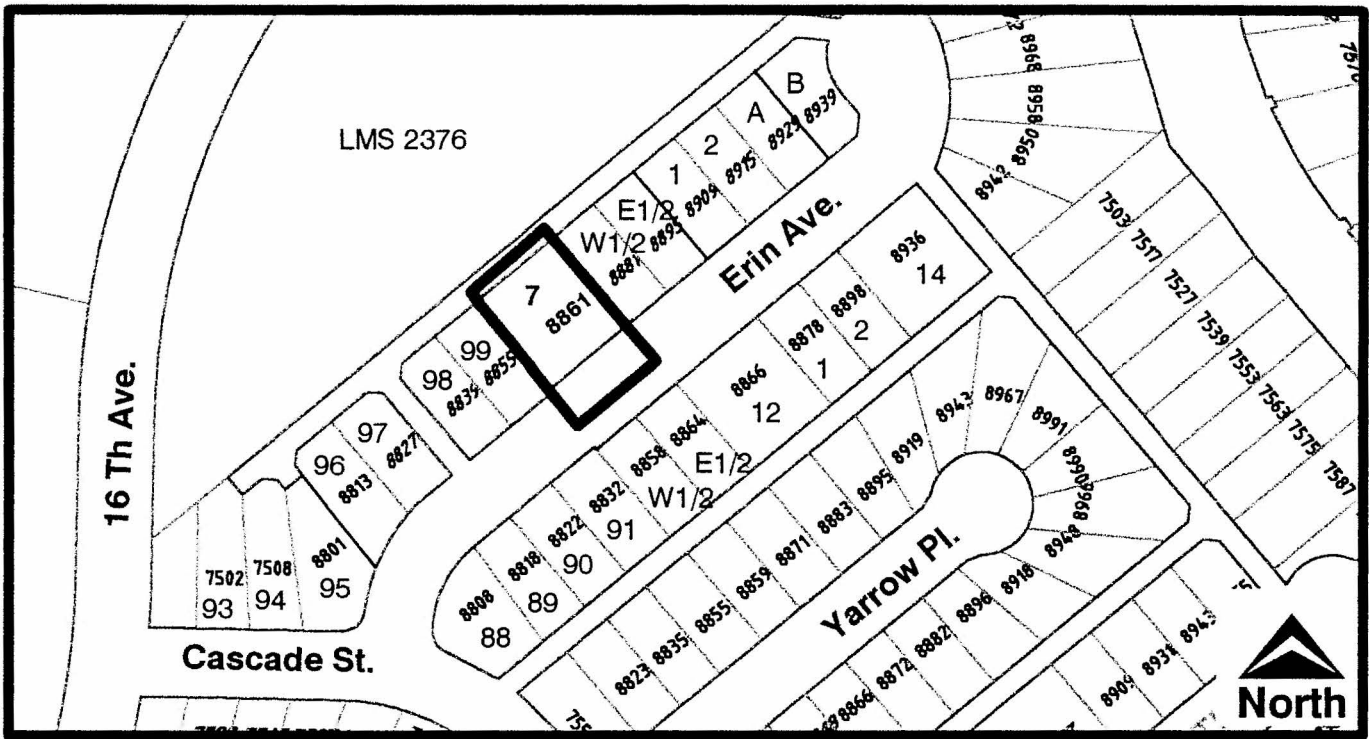
Read a first time this	8th	day of	April	2002
Read a second time this	6th	day of	May	2002
Read a third time	21st	day of	October	2002
Reconsidered and adopted this	21st	day of	October	2002


ACTING MAYOR


CLERK

BYLAW NUMBER 11360 BEING A BYLAW TO AMEND BYLAW NUMBER 4742 BEING BURNABY ZONING BYLAW 1965

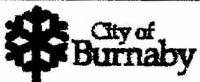
LEGAL: Lot 7, Block 33, D.L. 13, Group 1, NWD Plan 3046



THE AREA(S) SHOWN ABOVE OUTLINED IN BLACK (—) IS (ARE) REZONED

FROM: R9 Residential District

TO: R9a Residential District



Planning And Building Department

Scale: N.T.S.

Drawn By: J.P.C.

Date: April 2002

OFFICIAL ZONING MAP
Map "B"

NO.REZ. 3311