

CITY OF BURNABY

BYLAW NO. 11321

A BYLAW to amend Bylaw No. 4742, being
Burnaby Zoning Bylaw 1965

WHEREAS application for rezoning has been made to the Council;

AND WHEREAS the Council has held a public hearing thereon after duly giving notice of the hearing as prescribed by sections 892 and 893 of the *Local Government Act*, R.S.B.C. 1996;

NOW THEREFORE the Council of the City of Burnaby ENACTS as follows:

1. This Bylaw may be cited as **BURNABY ZONING BYLAW 1965, AMENDMENT BYLAW NO. 39, 2001.**
2. The map (hereinafter called "Map 'A'") attached to and forming an integral part of Bylaw No. 4742, being Burnaby Zoning Bylaw 1965, and designated as the Official Zoning Map of the City of Burnaby, is hereby amended according to the Map (hereinafter called "Map 'B'"), marginally numbered R.Z. 3302 annexed to this Bylaw, and in accordance with the explanatory legend, notations, references and boundaries designated, described, delimited and specified in particularity shown upon said Map 'B', and the various boundaries and districts shown upon said Map 'B', respectively are an amendment of and in substitution for the respective districts, designated and marked on said Map 'A' insofar as the same are changed, modified or varied thereby, and the said Map 'A' shall be deemed to be and is hereby declared to be amended accordingly and the said Map 'B' is hereby declared to be and shall form an integral part of said Map 'A' as if originally incorporated therein and shall be interpreted accordingly.

Read a first time this 3RD day of DECEMBER 2001

Read a second time this 7TH day of JANUARY 2002

Read a third time 7TH day of APRIL 2003

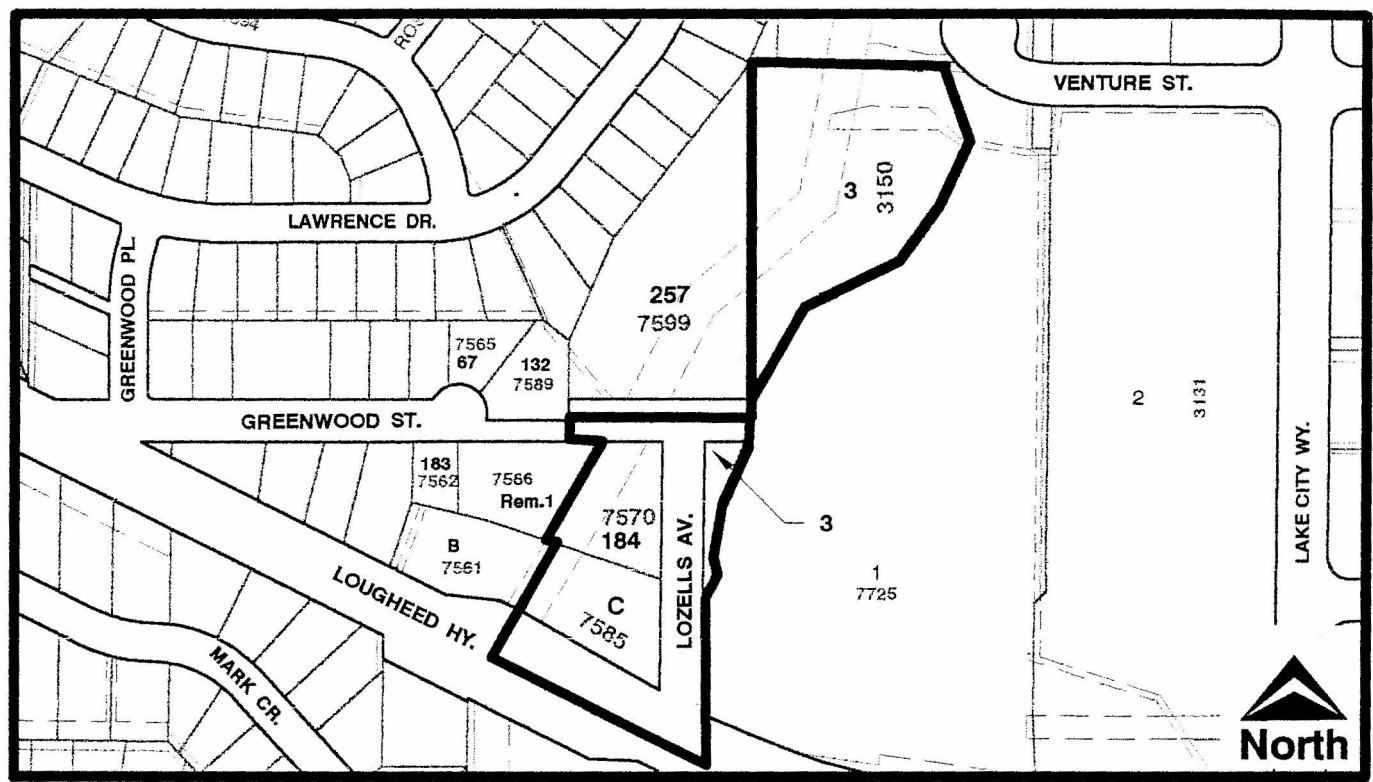
Reconsidered and adopted this 7TH day of APRIL 2003


MAYOR

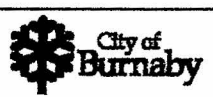

CLERK

BYLAW NUMBER 11321 BEING A BYLAW TO AMEND BYLAW NUMBER 4742 BEING BURNABY ZONING BYLAW 1965

LEGAL: SEE ATTACHED SCHEDULE "A"



THE AREA(S) SHOWN ABOVE OUTLINED IN BLACK (—) IS (ARE) REZONED
FROM: R2 Residential District and M3 Heavy Industrial District
TO: P3 Park and Public Use District



Planning And Building Department

Scale: N.T.S.
Drawn By: J.P.C.
Date: December 2001

OFFICIAL ZONING MAP

NO.REZ. 3302

**REZONING REFERENCE #01-32
SCHEDULE "A"**

Eagle Creek Ravine

3150 Lozells Ave	Lot 3, DL 59, Group 1, NWD Plan LMP33887
7585 Loughheed Highway	Lot "C" Except: Part on SRW Plan 21109, D.L. 43, Group 1, NWD Plan 11434
7570 Greenwood Street	Lot 184, D.L. 43, Group 1, NWD Plan 47540