

**CITY OF BURNABY**

**BYLAW NO. 11109**

A BYLAW to amend Bylaw No. 4742, being Burnaby Zoning Bylaw 1965, as amended by Bylaw No. 7558, being Burnaby Zoning Bylaw 1965, Amendment Bylaw No. 34, 1980

WHEREAS application for rezoning has been made to the Council;

AND WHEREAS the Council has held a public hearing thereon after duly giving notice of the time and place of such hearing as prescribed by Sections 892 and 893 of the *Municipal Act*, R.S.B.C. 1996;

NOW THEREFORE the Council of the City of Burnaby ENACTS as follows:

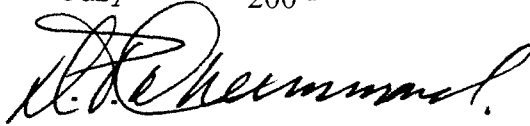
1. This Bylaw may be cited as **BURNABY ZONING BYLAW 1965, AMENDMENT BYLAW NO. 18, 2000.**

2. Bylaw No 4742, as amended by Bylaw No. 7558, is further amended as follows:

(a) The Map (hereinafter called "Map 'A'"), attached to and forming an integral part of Bylaw No. 4742, being "Burnaby Zoning Bylaw 1965", and designated as the Official Zoning Map of the City of Burnaby, is hereby amended according to the Map (hereinafter called "Map 'B'"), marginally numbered R.Z. 3245, annexed to this Bylaw, and in accordance with the explanatory legend, notations, references and boundaries designated, described, delimited and specified in particularity shown upon said Map 'B'; and the various boundaries and districts shown upon said Map 'B' respectively are an amendment of and in addition to the respective districts, designated and marked on said Map 'A' insofar as the same are changed, modified or varied thereby, and the said Map 'A' shall be deemed to be and is hereby declared to be amended accordingly and the said Map 'B' is hereby declared to be and shall form an integral part of said Map 'A', as if originally incorporated therein and shall be interpreted accordingly.

(b) The Comprehensive Development Plan more particularly described in Bylaw No. 7558 is amended as may be necessary by the development plan entitled "DISCOVERY PARK AT SFU - MULTI-TENANT FACILITY 2" prepared by BUNTING COADY ARCHITECTS and on file in the office of the Director Planning and Building; and any development on the lands rezoned by this Bylaw shall be in conformity with the said Comprehensive Development Plan as amended.

Read a first time this	12th	day of	June	2000
Read a second time this	10th	day of	July	2000
Read a third time	11th	day of	June	200 <sup>1</sup>
Reconsidered and adopted this	9th	day of	July	200 <sup>1</sup>



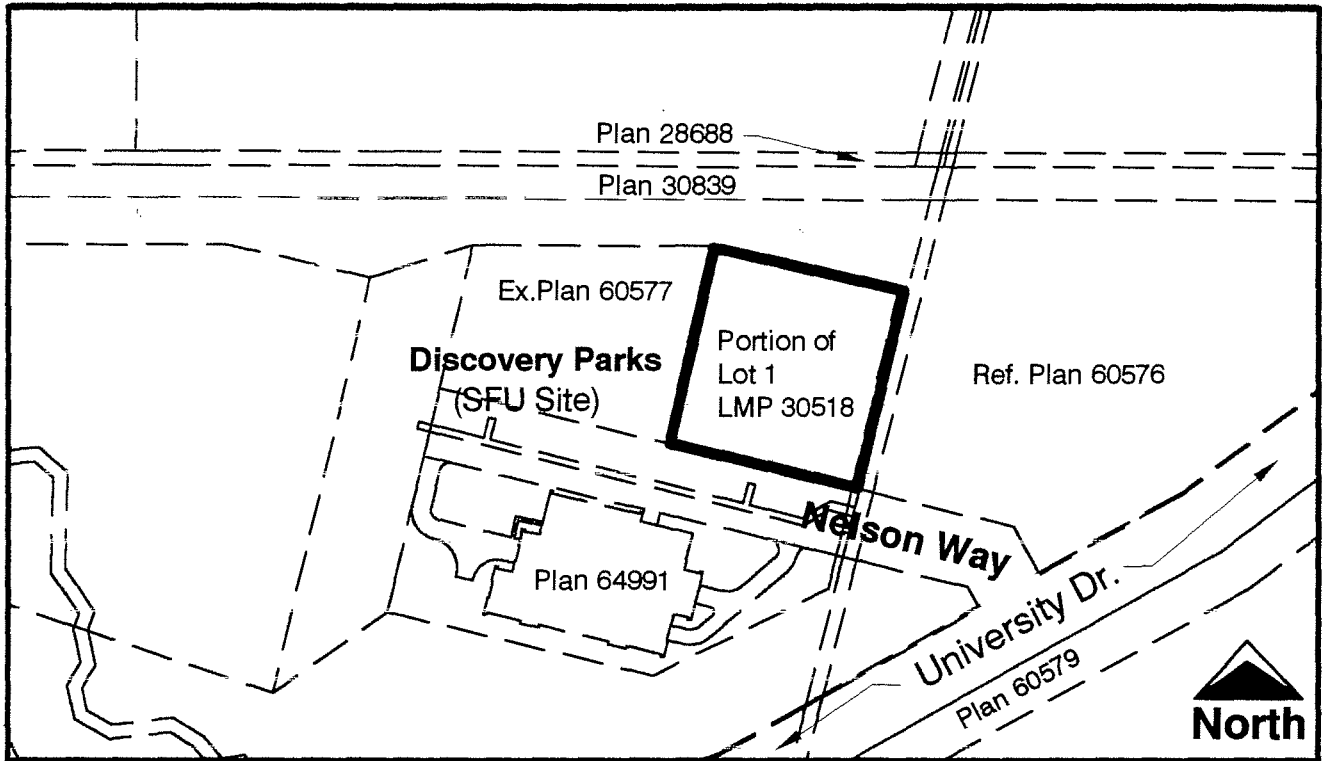
MAYOR



CLERK

**BYLAW NUMBER 11109 BEING A BYLAW TO AMEND BYLAW NUMBER 4742 BEING BURNABY ZONING BYLAW 1965**

**LEGAL:** Portion of Lot 1, D.L.'s 31, 101, 102, 144, 147, 209, 210 and 211, Group 1, NWD Plan LMP30518



**THE AREA(S) SHOWN ABOVE OUTLINED IN BLACK ( — ) IS (ARE) REZONED**

**FROM:** CD Comprehensive Development District

**TO:** Amended CD Comprehensive Development District (based on M5 Light Industrial District and Discovery Park Community Plan - SFU Site, and in accordance with the development plan entitled Discovery Park at SFU - Multi-Tenant Facility 2" and prepared by Bunting Coady Architects)



Planning And Building Department

**Scale:** 1:3000

**Drawn By:** J.P.C.

**Date:** May 2000

**OFFICIAL ZONING MAP**

**MAP "B"**

**NO. REZ. 3245**