

CITY OF BURNABY

BYLAW NO. 11077

A BYLAW to amend Bylaw No. 4742, being
Burnaby Zoning Bylaw 1965

WHEREAS application for rezoning has been made to the Council;

AND WHEREAS the Council has held a public hearing thereon after duly giving notice of the time and place of such hearing as prescribed by Sections 892 and 893 of the *Municipal Act*, R.S.B.C. 1996;

NOW THEREFORE the Council of the City of Burnaby ENACTS as follows:

1. This Bylaw may be cited as **BURNABY ZONING BYLAW 1965, AMENDMENT BYLAW NO. 12, 2000.**
2. The Map (hereinafter called "Map 'A'"), attached to and forming an integral part of Bylaw No. 4742, being "Burnaby Zoning Bylaw 1965", and designated as the Official Zoning Map of the City of Burnaby, is hereby amended according to the Map (hereinafter called "Map 'B'"), marginally numbered R.Z. 3239, annexed to this Bylaw, and in accordance with the explanatory legend, notations, references and boundaries designated, described, delimited and specified in particularity shown upon said Map 'B'; and the various boundaries and districts shown upon said Map 'B' respectively are an amendment of and in substitution for the respective districts, designated and marked on said Map 'A' insofar as the same are changed, modified or varied thereby, and the said Map 'A' shall be deemed to be and is hereby declared to be amended accordingly and the said Map 'B' is hereby declared to be and shall form an integral part of said Map 'A', as if originally incorporated therein and shall be interpreted accordingly.
3. The Comprehensive Development Plan entitled "LOUGHEED TOWN CENTRE STATION" prepared by PAUL MERRICK ARCHITECTS and on file in the office of the Director

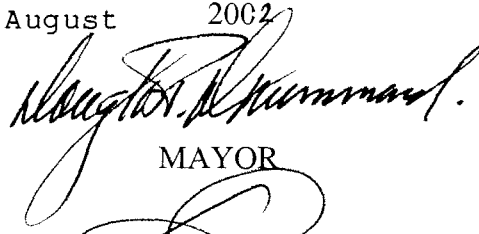
Planning and Building, is deemed to be attached to and form part of this Bylaw and any development on the lands rezoned by this Bylaw shall be in conformity with the said Comprehensive Development Plan.

Read a first time this 6th day of March 2000

Read a second time this 3rd day of April 2000

Read a third time 4th day of February 2002

Reconsidered and adopted this 26th day of August 2002



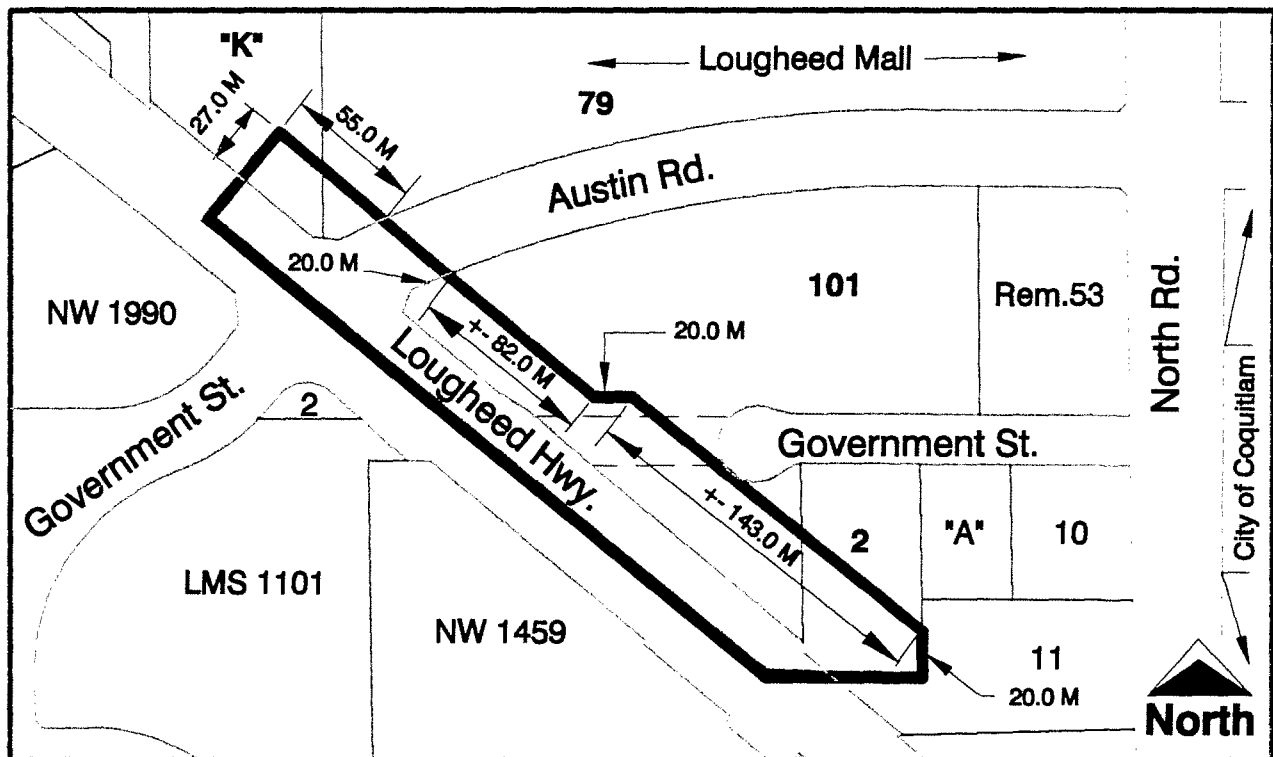
MAYOR



CLERK

BYLAW NUMBER 11077 BEING A BYLAW TO AMEND BYLAW NUMBER 4742 BEING BURNABY ZONING BYLAW 1965

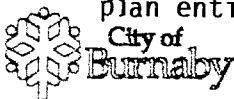
LEGAL: Ptn. of Parcel "One" (536961) Exc: Part on SRW Plan 21111, Parcel "K" (Plan with Fee Deposited No.16405F), Lots 1 & 8, D.L.4, Group 1, NWD Plan 845; Ptn. of Lot 101, D.L.'s 2 & 4, Group 1, NWD Plan 43016; Ptn. of Lot 79, D.L.4, Group 1, NWD Plan 36145; Ptn. of Lot 2 Exc: First: Part on SRW Plan 21111, Secondly: Part on SRW Plan 4829, D.L. 2, Group 1, NWD Plan 4286



THE AREA(S) SHOWN ABOVE OUTLINED IN BLACK () IS (ARE) REZONED

FROM: C3 General Commercial District and C4 Service Commercial District

TO: CD Comprehensive Development District (based on P2 Administration and Assembly District and the prevailing zoning of portions of the site related to the C3 and C4 Districts, and in accordance with the development plan entitled "Loughheed town Centre Station" prepared by Paul Merrick Architects)



Planning And Building Department

Scale: 1 = 3000

Drawn By: J.P.C.

Date: February 2000

OFFICIAL ZONING MAP

MAP "B"

NO. REZ. 3239