

CITY OF BURNABY

BYLAW NO. 11051

A BYLAW to amend Bylaw No. 4742, being
Burnaby Zoning Bylaw 1965

WHEREAS application for rezoning has been made to the Council;

AND WHEREAS the Council has held a public hearing thereon after duly giving notice of the time and place of such hearing as prescribed by Sections 892 and 893 of the *Municipal Act*, R.S.B.C. 1996;

NOW THEREFORE the Council of the City of Burnaby ENACTS as follows:

1. This Bylaw may be cited as **BURNABY ZONING BYLAW 1965, AMENDMENT BYLAW NO. 2, 2000.**
2. The Map (hereinafter called "Map 'A'"), attached to and forming an integral part of Bylaw No. 4742, being "Burnaby Zoning Bylaw 1965", and designated as the Official Zoning Map of the City of Burnaby, is hereby amended according to the Map (hereinafter called "Map 'B'"), marginally numbered R.Z. 3230, annexed to this Bylaw, and in accordance with the explanatory legend, notations, references and boundaries designated, described, delimited and specified in particularity shown upon said Map 'B'; and the various boundaries and districts shown upon said Map 'B' respectively are an amendment of and in substitution for the respective districts, designated and marked on said Map 'A' insofar as the same are changed, modified or varied thereby, and the said Map 'A' shall be deemed to be and is hereby declared to be amended accordingly and the said Map 'B' is hereby declared to be and shall form an integral part of said Map 'A', as if originally incorporated therein and shall be interpreted accordingly.
3. The Comprehensive Development Plan entitled "BRENTWOOD STATION" prepared by BUSBY & ASSOCIATES ARCHITECTS, and on file in the office of the Director

Planning and Building, is deemed to be attached to and form part of this Bylaw and any development on the lands rezoned by this Bylaw shall be in conformity with the said Comprehensive Development Plan:

Read a first time this 10th day of January 2000

Read a second time this 7th day of February 2000

Read a third time this 15th day of May 2000

Received the approval of the Minister of Transportation and Highways

this 31st day of May 2000

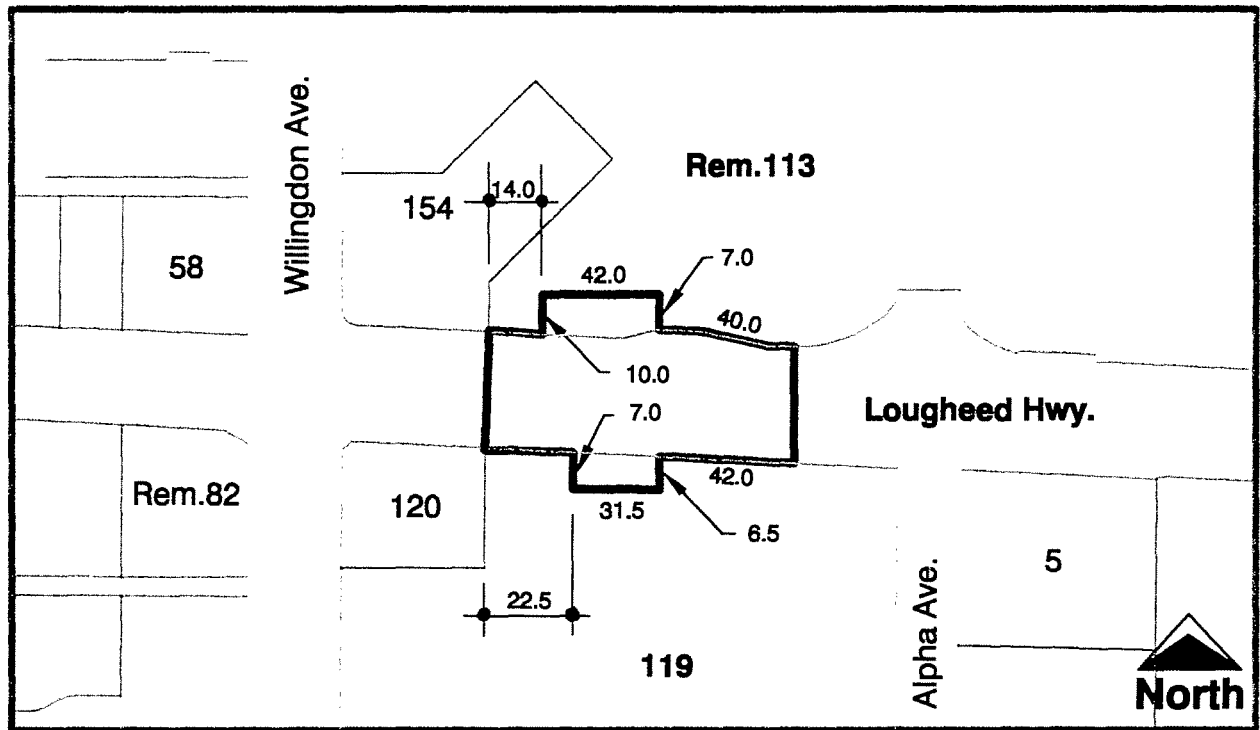
Reconsidered and adopted this 7th day of June 2004


MAYOR


P. CLERK

BYLAW NUMBER 11051 BEING A BYLAW TO AMEND BYLAW NUMBER 4742 BEING BURNABY ZONING BYLAW 1965

LEGAL: Ptn. of Lot 119, D.L. 124, Group 1, NWD Plan 28198, Ptn. of Lot 113 Excluding Part Subdivided by Plan 27154, D.L.'s 123 & 124, Group 1, NWD Plan 26085



THE AREA(S) SHOWN ABOVE OUTLINED IN BLACK (—) IS (ARE) REZONED

FROM: CD Comprehensive Development District (based on C3, C3a General Commercial District, P2 Administration and Assembly District and M1 Manufacturing District)

TO: CD Comprehensive Development District (based on P2 Administration and Assembly District and the prevailing zoning of portions of the site related to CD (C3, C3a, P2) and M1 Districts, and in accordance with the development plan entitled "Brentwood Station" prepared by Busby & Associates Architects)



Planning And Building Department

Scale: 1 = 2500

Drawn By: J.P.C.

Date: January 2000

OFFICIAL ZONING MAP

MAP "B"

NO. REZ. 3230