

CITY OF BURNABY

BYLAW NO. 11042

A BYLAW to amend Bylaw No. 4742, being Burnaby Zoning Bylaw 1965, as amended by Bylaw Nos. 7036 and 10619 being Burnaby Zoning Bylaw 1965, Amendment Bylaw Nos. 14, 1977 and 39, 1997, respectively

WHEREAS application for rezoning has been made to the Council;

AND WHEREAS the Council has held a public hearing thereon after duly giving notice of the time and place of such hearing as prescribed by Sections 892 and 893 of the *Municipal Act*, R.S.B.C. 1996;

NOW THEREFORE the Council of the City of Burnaby ENACTS as follows:

1. This Bylaw may be cited as **BURNABY ZONING BYLAW 1965, AMENDMENT BYLAW NO. 56, 1999.**

2. Bylaw No 4742, as amended by Bylaw Nos. 10403 and 10675, is further amended as follows:

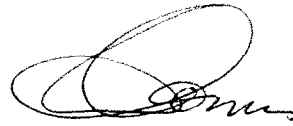
(a) The Map (hereinafter called "Map 'A'"), attached to and forming an integral part of Bylaw No. 4742, being "Burnaby Zoning Bylaw 1965", and designated as the Official Zoning Map of the City of Burnaby, is hereby amended according to the Map (hereinafter called "Map 'B'"), marginally numbered R.Z. 3226, annexed to this Bylaw, and in accordance with the explanatory legend, notations, references and boundaries designated, described, delimited and specified in particularity shown upon said Map 'B'; and the various boundaries and districts shown upon said Map 'B' respectively are an amendment of and in addition to the respective

districts, designated and marked on said Map 'A' insofar as the same are changed, modified or varied thereby, and the said Map 'A' shall be deemed to be and is hereby declared to be amended accordingly and the said Map 'B' is hereby declared to be and shall form an integral part of said Map 'A', as if originally incorporated therein and shall be interpreted accordingly.

(b) The Comprehensive Development Plan more particularly described in Bylaw Nos. 7036 and 10619 is amended as may be necessary by the development plan entitled "OLD DUTCH FOODS." prepared by BEEDIE CONSTRUCTION CO. LTD. and on file in the office of the Director Planning and Building; and any development on the lands rezoned by this Bylaw shall be in conformity with the said Comprehensive Development Plan as amended.

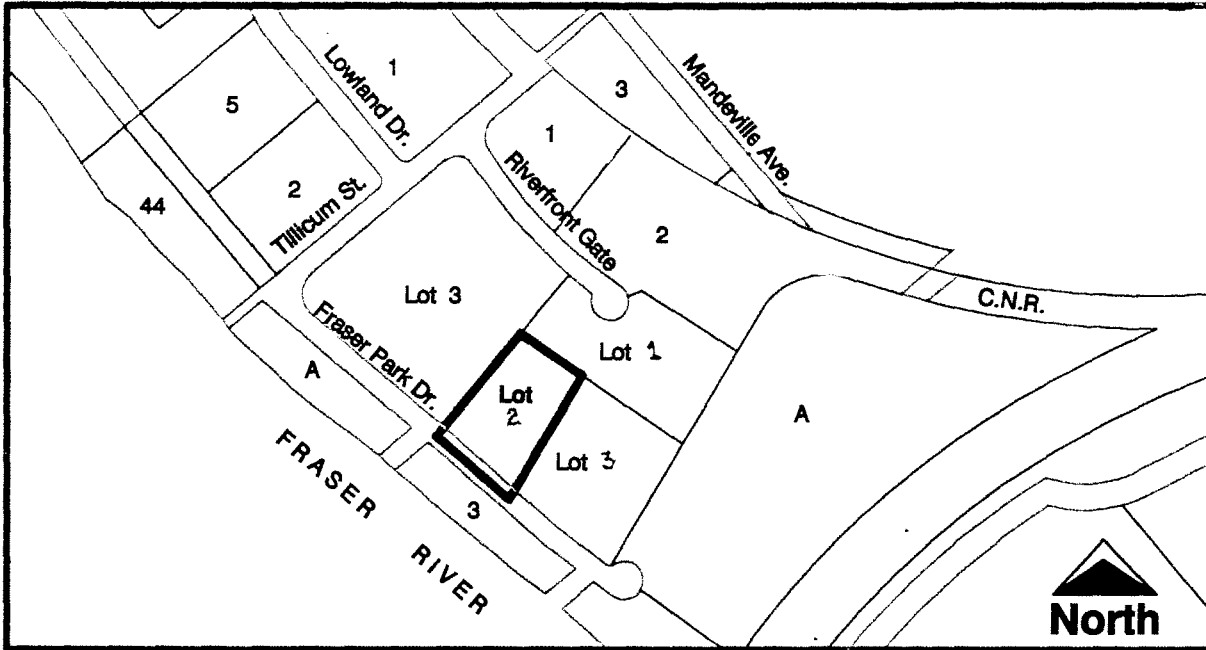
Read a first time this	22 nd	day of	NOVEMBER	1999
Read a second time this	20 th	day of	DECEMBER	1999
Read a third time	24 th	day of	JANUARY	2000
Reconsidered and adopted this	7 th	day of	FEBRUARY	2000


MAYOR


CLERK

**BYLAW NUMBER 11042 BEING A BYLAW TO AMEND BYLAW
NUMBER 4742 BEING BURNABY ZONING BYLAW 1965**

LEGAL: Ptn. of Lot 4, D.L. 166 & 167, Group 1, NWD Plan LMP42789



THE AREA(S) SHOWN ABOVE OUTLINED IN BLACK (—) IS (ARE) REZONED

FROM: CD Comprehensive Development District (based on M1 Manufacturing District, M2 General Industrial District, M3 Heavy Industrial District and M5 Light Industrial District)
TO: Amended CD Comprehensive Development District (based on M2 General Industrial District and M5 Light Industrial District guidelines and in accordance with the development plan entitled "Old Dutch Foods" prepared by Beedie Construction Co. Ltd.)



Planning And Building Department

Scale: N.T.S.

Drawn By: J.P.C.

Date: November 1999

OFFICIAL ZONING MAP

MAP "B"

NO. REZ. 3226