

CITY OF BURNABY

BYLAW NO. 11007

A BYLAW to amend Bylaw No. 4742, being Burnaby Zoning Bylaw 1965, as amended by Bylaw No. 10792, being Burnaby Zoning Bylaw 1965, Amendment Bylaw No. 40, 1998

WHEREAS application for rezoning has been made to the Council;

AND WHEREAS the Council has held a public hearing thereon after duly giving notice of the time and place of such hearing as prescribed by Sections 892 and 893 of the *Municipal Act*, R.S.B.C. 1996;

NOW THEREFORE the Council of the City of Burnaby ENACTS as follows:

1. This Bylaw may be cited as **BURNABY ZONING BYLAW 1965, AMENDMENT BYLAW NO. 49, 1999.**

2. Bylaw No 4742, as amended by Bylaw No. 10792, is further amended as follows:

(a) The Map (hereinafter called "Map 'A'"), attached to and forming an integral part of Bylaw No. 4742, being "Burnaby Zoning Bylaw 1965", and designated as the Official Zoning Map of the City of Burnaby, is hereby amended according to the Map (hereinafter called "Map 'B'"), marginally numbered R.Z. 3220, annexed to this Bylaw, and in accordance with the explanatory legend, notations, references and boundaries designated, described, delimited and specified in particularity shown upon said Map 'B'; and the various boundaries and districts shown upon said Map 'B' respectively are an amendment of and in addition to the respective districts, designated and marked on said Map 'A' insofar as the same are changed, modified or

districts, designated and marked on said Map 'A' insofar as the same are changed, modified or varied thereby, and the said Map 'A' shall be deemed to be and is hereby declared to be amended accordingly and the said Map 'B' is hereby declared to be and shall form an integral part of said Map 'A', as if originally incorporated therein and shall be interpreted accordingly.

(b) The Comprehensive Development Plan more particularly described in Bylaw Nos. 7036 and 10619 is amended as may be necessary by the development plan entitled "STYLUS FURNITURE LTD." prepared by BEEDIE CONSTRUCTION CO. LTD. and on file in the office of the Director Planning and Building; and any development on the lands rezoned by this Bylaw shall be in conformity with the said Comprehensive Development Plan as amended.

Read a first time this	4 th	day of	OCTOBER	1999
Read a second time this	1 st	day of	NOVEMBER	1999
Read a third time	24 th	day of	JANUARY	2000
Reconsidered and adopted this	7 th	day of	FEBRUARY	2000



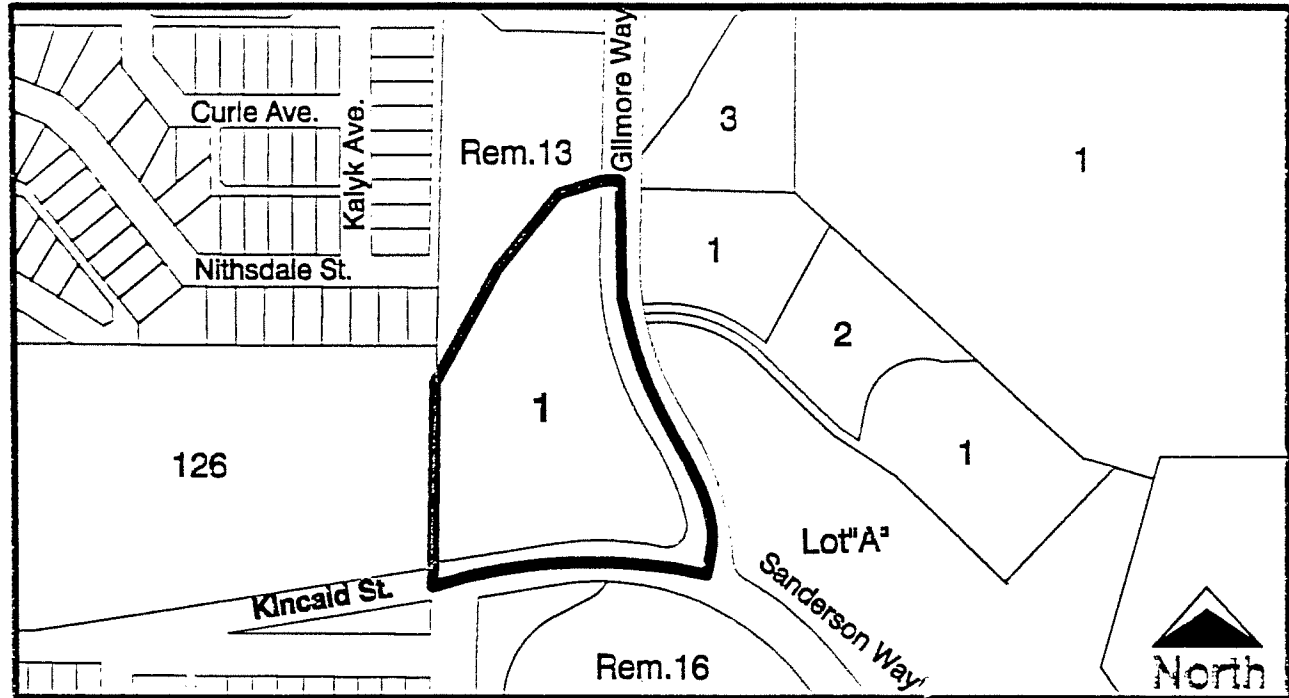
MAYOR



CLERK

**BYLAW NUMBER 11007 BEING A BYLAW TO AMEND BYLAW
NUMBER 4742 BEING BURNABY ZONING BYLAW 1965**

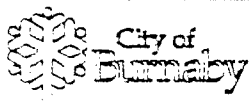
LEGAL: PARCEL 1, D.L. 71, GROUP 1, NWD PLAN 70812



THE AREA(S) SHOWN ABOVE OUTLINED IN BLACK (——) IS (ARE) REZONED

FROM: CD COMPREHENSIVE DEVELOPMENT DISTRICT (BASED ON M8 ADVANCED TECHNOLOGY RESEARCH DISTRICT AND DISCOVERY PLACE COMMUNITY PLAN GUIDELINES)

TO: CD COMPREHENSIVE DEVELOPMENT DISTRICT (BASED ON M8 ADVANCED TECHNOLOGY RESEARCH DISTRICT AND DISCOVERY PLACE COMMUNITY PLAN GUIDELINES, AND IN ACCORDANCE WITH THE DEVELOPMENT PLAN ENTITLED "KINCAID WEST REZONING" PREPARED BY JOHNSTON DAVIDSON ARCHITECTURE AND PLANNING INC.)



Planning And Building Department

Scale: N.T.S.

Drawn By: J.P.C.

Date: October 1999

OFFICIAL ZONING MAP

MAP "B"

NO. REZ. 3220