

CITY OF BURNABY

BYLAW NO. 10866

A BYLAW to amend Bylaw No. 4742, being Burnaby Zoning Bylaw 1965, as amended by Bylaw No. 8354, being Burnaby Zoning Bylaw 1965, Amendment Bylaw No. 18, 1985

WHEREAS application for rezoning has been made to the Council;

AND WHEREAS the Council has held a public hearing thereon after duly giving notice of the time and place of such hearing as prescribed by Sections 892 and 893 of the *Municipal Act*, R.S.B.C. 1996;

NOW THEREFORE the Council of the City of Burnaby ENACTS as follows:

1. This Bylaw may be cited as BURNABY ZONING BYLAW 1965, AMENDMENT BYLAW NO. 2, 1999.

2. Bylaw No 4742, as amended by Bylaw No. 8354 is further amended as follows:

(a) The Map (hereinafter called "Map 'A'"), attached to and forming an integral part of Bylaw No. 4742, being "Burnaby Zoning Bylaw 1965", and designated as the Official Zoning Map of the City of Burnaby, is hereby amended according to the Map (hereinafter called "Map 'B'"), marginally numbered R.Z. 3177, annexed to this Bylaw, and in accordance with the explanatory legend, notations, references and boundaries designated, described, delimited and specified in particularity shown upon said Map 'B'; and the various boundaries and districts shown upon said Map 'B' respectively are an amendment of and in addition to the respective districts, designated and marked on said Map 'A' insofar as the same are changed, modified or

varied thereby, and the said Map 'A' shall be deemed to be and is hereby declared to be amended accordingly and the said Map 'B' is hereby declared to be and shall form an integral part of said Map 'A', as if originally incorporated therein and shall be interpreted accordingly.

(b) The Comprehensive Development Plan more particularly described in Bylaw No. 8354 is amended as may be necessary by the development plan entitled "WILLINGDON PARK BY SLOUGH ESTATES, BUILDING 1506, STILL CREEK DRIVE, BURNABY, B.C." prepared by COHOS EVAMY INTERPLAN, and on file in the office of the Director Planning and Building; and any development on the lands rezoned by this Bylaw shall be in conformity with the said Comprehensive Development Plan as amended.



Read a first time this 11th day of JANUARY 1999

Read a second time this 1st day of FEBRUARY 1999

Read a third time 9th day of AUGUST 1999

Received the approval of the Minister of Transportation and Highways
this 1st day of MARCH 2000.

Reconsidered and adopted this 6th day of MARCH 2000


MAYOR

CLERK

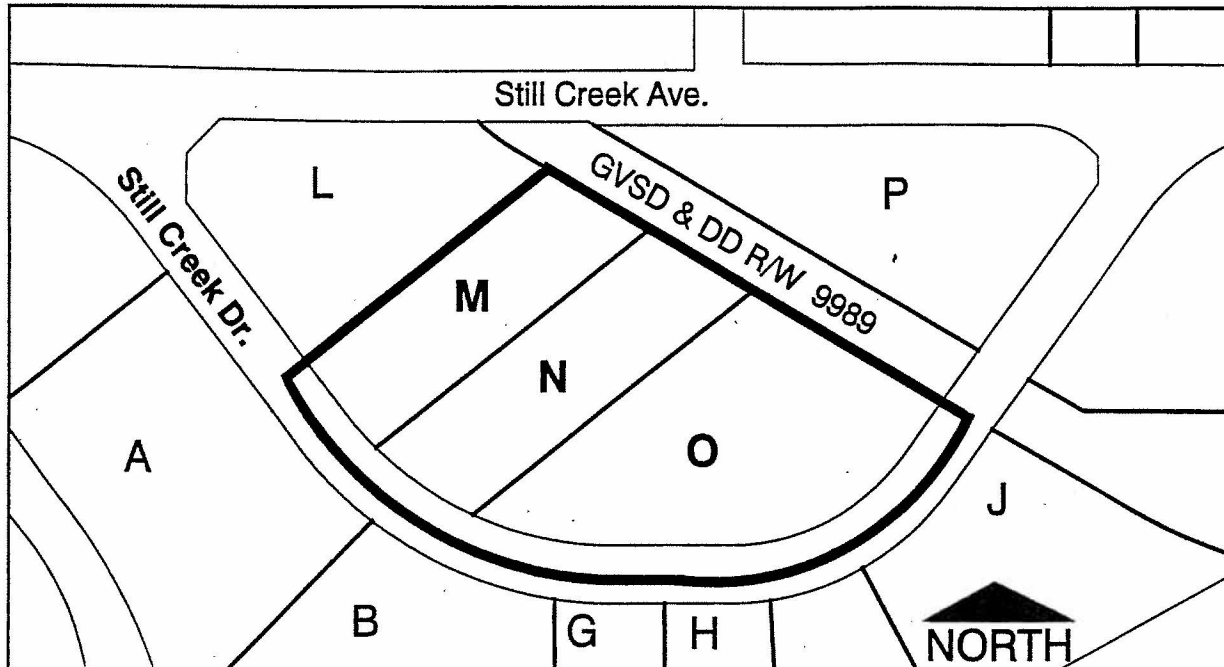
RZ # 79 /97

BYLAW NUMBER 10866
NUMBER 4742 BEING THE

BEING A BYLAW TO AMEND BYLAW
BURNABY ZONING BYLAW 1965

LEGAL: LOTS M, N & O, D.L.'S 69 & 70, GROUP 1, NWD PLAN 71013

MAP "B"



THE AREA(S) SHOWN ABOVE OUTLINED IN BLACK (-) IS (ARE) REZONED

FROM: CD COMPREHENSIVE DEVELOPMENT DISTRICT (BASED ON M5 LIGHT INDUSTRIAL DISTRICT GUIDELINES)

TO: CD COMPREHENSIVE DEVELOPMENT DISTRICT (BASED ON M5 LIGHT INDUSTRIAL DISTRICT AND WILLINGDON PARK COMMUNITY PLAN AND IN ACCORDANCE WITH THE DEVELOPMENT PLAN ENTITLED "WILLINGDON PARK BY SLOUGH ESTATES, BUILDING 1506, STILL CREEK DRIVE, BURNABY, B.C." PREPARED BY COHOS EVAMY INTERPLAN)



Planning And Building Department

Scale: N.T.S.

Drawn By: J.P.C.

Date: DEC. 1998

OFFICIAL ZONING MAP

NO. RZ 3177